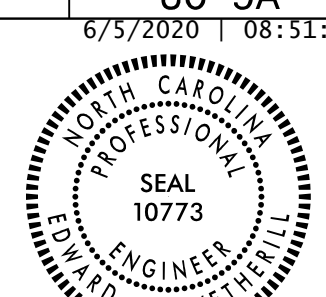


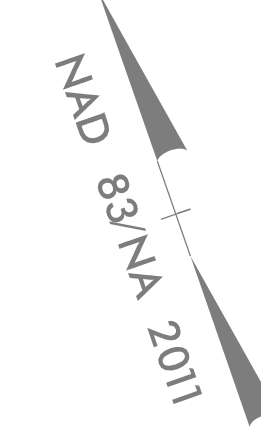
8/17/99

PROJECT REFERENCE NO.	SHEET NO.
W-5600	UC-9A
DESIGNED BY: SS	6/5/2020 10:51:38 EDT
DRAWN BY: SS	
CHECKED BY: MVZ	
APPROVED BY: MVZ	UTILITIES ENGINEERING SEC.
REVISED:	PHONE: (919) 707-6690
	FAX: (919) 250-4151

FINAL DESIGN
RELEASE
FOR CONSTRUCTION

NOTE: CONTRACTOR TO UTILIZE
HORIZONTAL & VERTICAL BENDS AS NECESSARY

17
PATTIE B. PROCTOR
DB 699 PG 604



TIE TO EXISTING 16" DIP WATER MAIN ONCE ALL TESTING AND CHLORINATION IS COMPLETED. RESTRAIN NEW WATERLINE TO EXISTING WATERLINE. USE STAINLESS STEEL "ALL THREAD" RODDING AS REQUIRED. COORDINATE WITH COUNTY.

NEW 12" WATERLINE TIE IN
INSTALL 12X12 TEE
AND (1) 12" GATE VALVE

OPEN CUT AND INSTALL 33LF
12" CLASS 51 R.J. DIP WL
WITHIN 20" STEEL ENCASMENT
PIPE (0.375" THK)

NEW 16" WATERLINE TIE IN
INSTALL 12X12 TEE,
(1) 16X12 REDUCER
AND (1) 12" GATE VALVE

OPEN CUT AND INSTALL 50LF
16" CLASS 51 R.J. DIP WL
WITHIN 26" STEEL ENCASMENT
PIPE (0.375" THK)

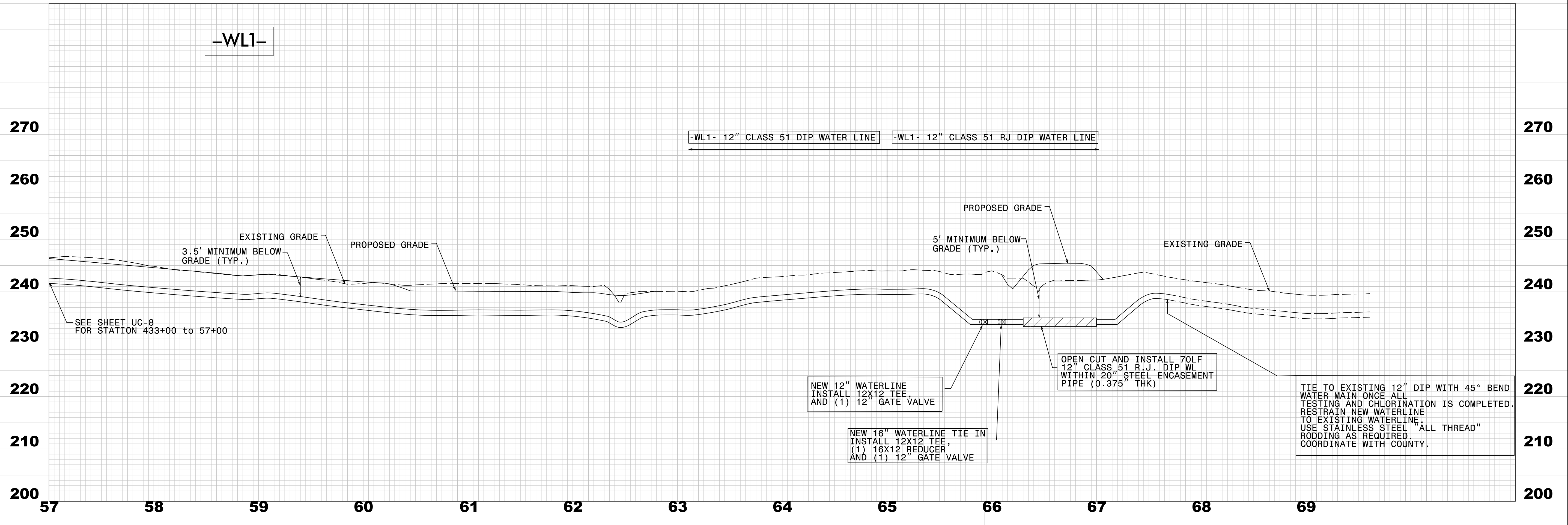
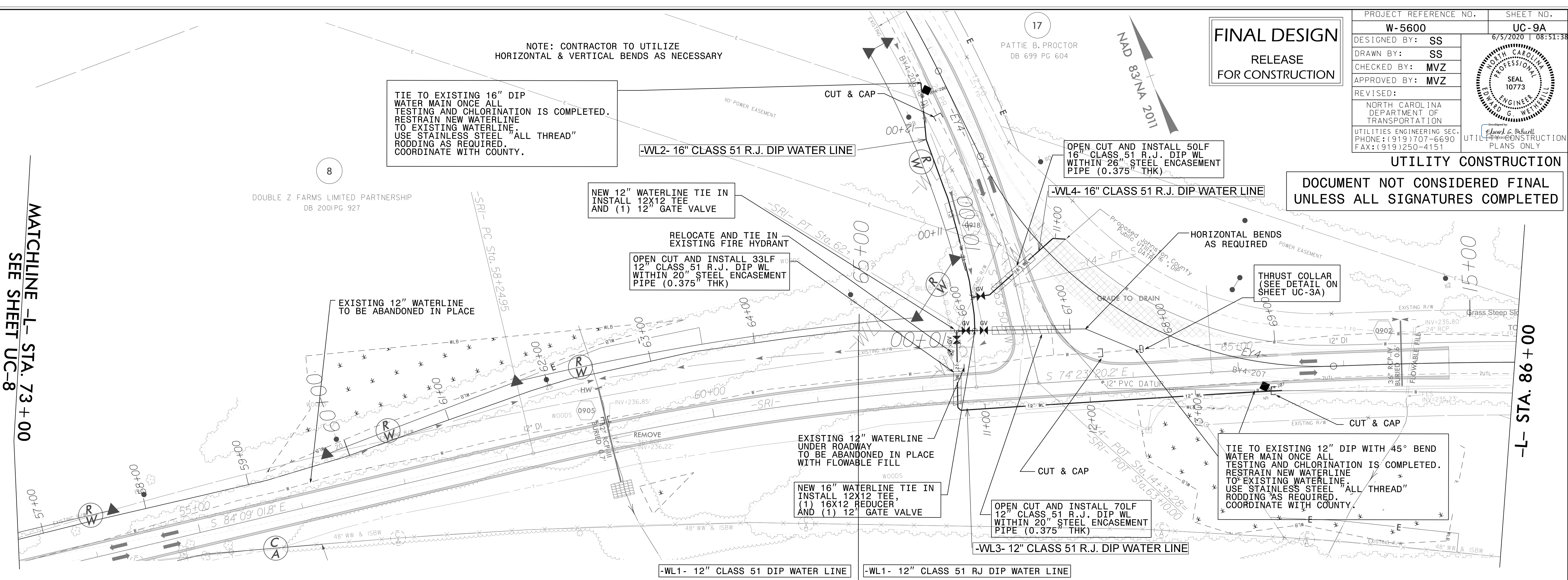
OPEN CUT AND INSTALL 70LF
12" CLASS 51 R.J. DIP WL
WITHIN 20" STEEL ENCASMENT
PIPE (0.375" THK)

TIE TO EXISTING 12" DIP WITH 45° BEND
WATER MAIN ONCE ALL
TESTING AND CHLORINATION IS COMPLETED.
RESTRAIN NEW WATERLINE
TO EXISTING WATERLINE.
USE STAINLESS STEEL "ALL THREAD"
RODDING AS REQUIRED.
COORDINATE WITH COUNTY.

UTILITY CONSTRUCTION
DOCUMENT NOT CONSIDERED FINAL
UNLESS ALL SIGNATURES COMPLETED

MATCHLINE -L- STA. 73+00
SEE SHEET UC-8

-L- STA. 86+00



REVISIONS

AS SHOWN ON W-5600, UTILITIES ENGINEERING, 1000 W. WILSON ROAD, SUITE 200, WILSON, NC 27157. DATE: 6/5/2020. DRAWN BY: SS. CHECKED BY: MVZ. APPROVED BY: MVZ.