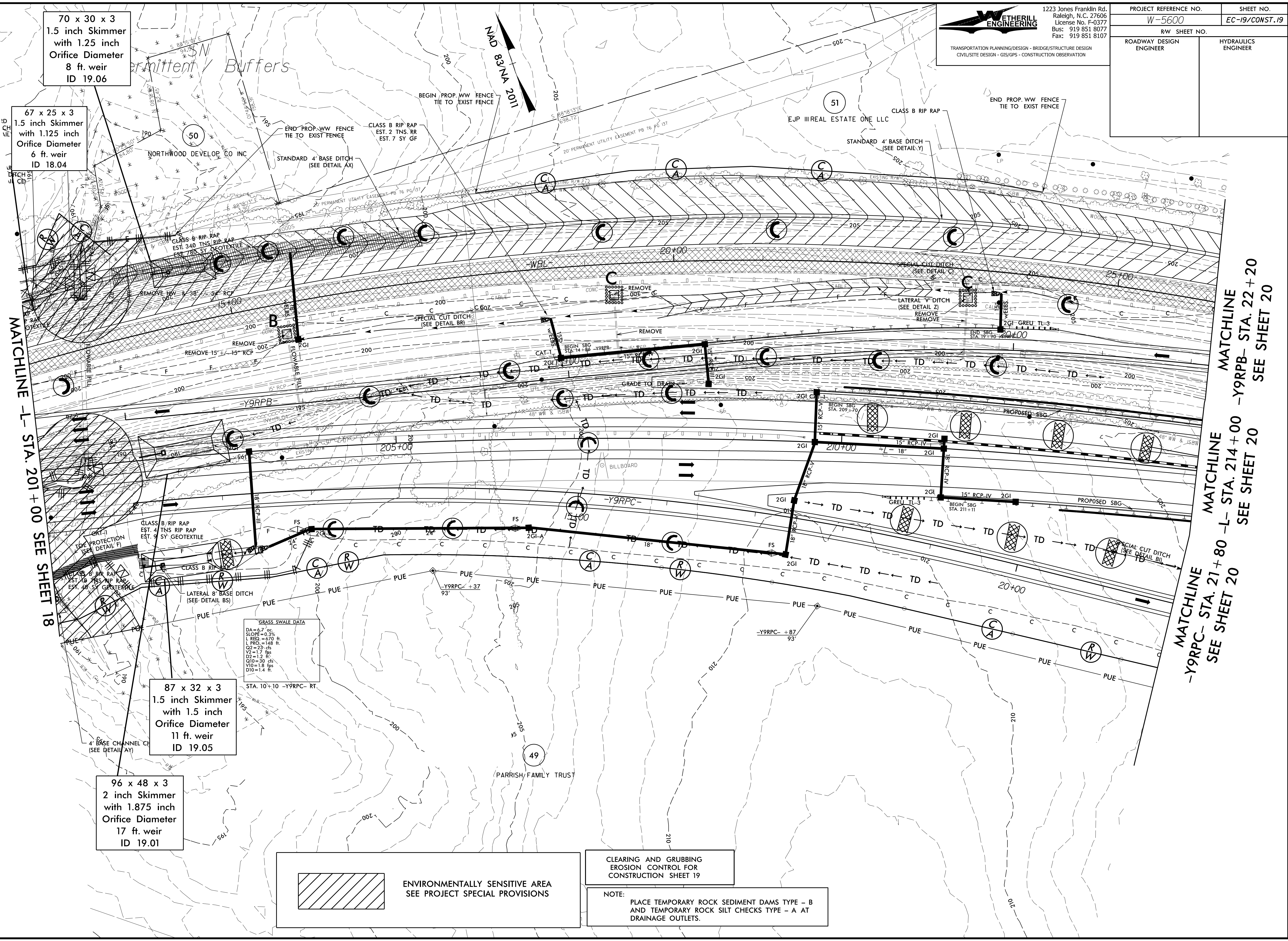


PROJECT REFERENCE NO.	SHEET NO.
W-5600	EC-19/CONST.19
RW SHEET NO.	
ROADWAY DESIGN ENGINEER	HYDRAULICS ENGINEER



70 x 30 x 3
 1.5 inch Skimmer
 with 1.25 inch
 Orifice Diameter
 8 ft. weir
 ID 19.06

67 x 25 x 3
 1.5 inch Skimmer
 with 1.125 inch
 Orifice Diameter
 6 ft. weir
 ID 18.04

87 x 32 x 3
 1.5 inch Skimmer
 with 1.5 inch
 Orifice Diameter
 11 ft. weir
 ID 19.05

96 x 48 x 3
 2 inch Skimmer
 with 1.875 inch
 Orifice Diameter
 17 ft. weir
 ID 19.01

GRASS SWALE DATA
 DA=6.7' oc
 SLOPE=0.3%
 L REQ=670 ft.
 L PRO=148 ft.
 Q2=22 cfs
 V2=1.7 fps
 D2=1.2 ft
 Q10=30 cfs
 V10=1.8 fps
 D10=1.4 ft

 ENVIRONMENTALLY SENSITIVE AREA
 SEE PROJECT SPECIAL PROVISIONS

CLEARING AND GRUBBING
 EROSION CONTROL FOR
 CONSTRUCTION SHEET 19

NOTE:
 PLACE TEMPORARY ROCK SEDIMENT DAMS TYPE - B
 AND TEMPORARY ROCK SILT CHECKS TYPE - A AT
 DRAINAGE OUTLETS.

MATCHLINE -L- STA. 201 + 00 SEE SHEET 18

MATCHLINE -Y9RPC- STA. 21 + 80 -L- STA. 214 + 00 -Y9RPB- STA. 22 + 20
 SEE SHEET 20

8.17/99