

5/28/19

PIPE HYDRAULIC DATA
18" RCP -DR2- Sta. 10+88

DRAINAGE AREA	= 12	AC
DESIGN FREQUENCY	= 25	YRS
DESIGN DISCHARGE	= 5.3	CFS
DESIGN HW ELEVATION	= 202.5	FT
100 YEAR DISCHARGE	= 6.1	CFS
100 YEAR HW ELEVATION	= 202.6	FT
OVERTOPPING FREQUENCY	= 500 ±	YRS
OVERTOPPING DISCHARGE	= 12	CFS
OVERTOPPING ELEVATION	= 203.5	FT

-DR2-

-DR3-

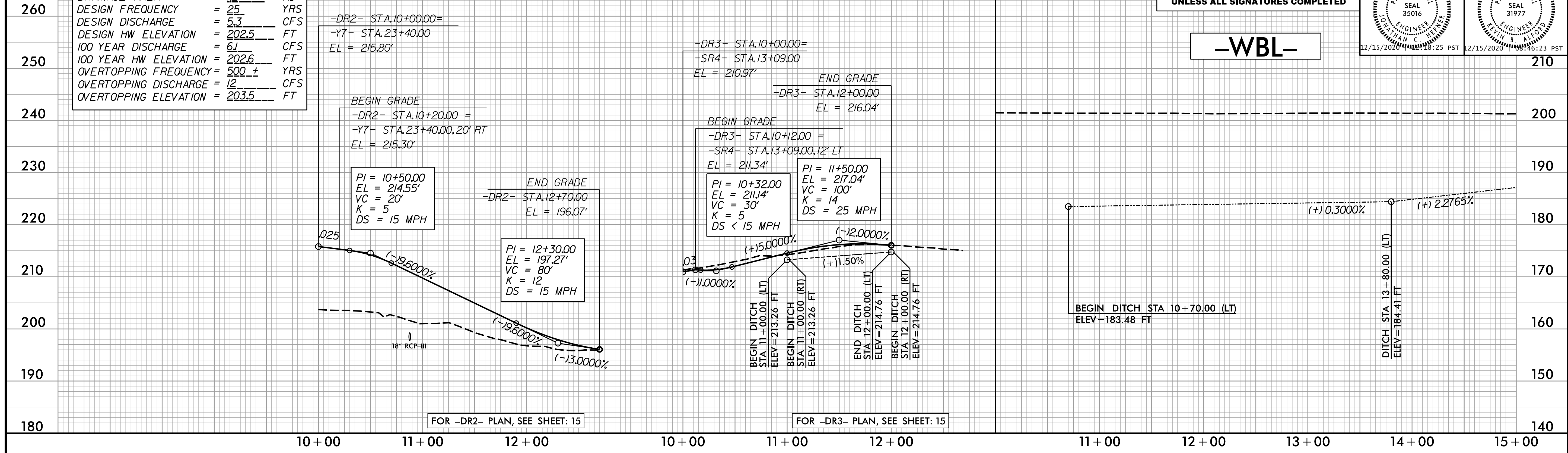
WETHERILL ENGINEERING
1223 Jones Franklin Rd.
Raleigh, N.C. 27606
License No. F-0377
Bus: 919 851 8077
Fax: 919 851 8107

TRANSPORTATION PLANNING/DESIGN - BRIDGE/STRUCTURE DESIGN
CIVIL/SITE DESIGN - GIS/GPS - CONSTRUCTION OBSERVATION

**DOCUMENT NOT CONSIDERED FINAL
UNLESS ALL SIGNATURES COMPLETED**

PROJECT REFERENCE NO.	W-5600	SHEET NO.	60
ROADWAY DESIGN ENGINEER	<i>Jonathan C. Pfeiffer</i>	HYDRAULICS ENGINEER	<i>K. B. Cline</i>
SEAL 35016		SEAL 31977	
12/15/2020 10:28:25 PST		12/15/2020 08:46:23 PST	

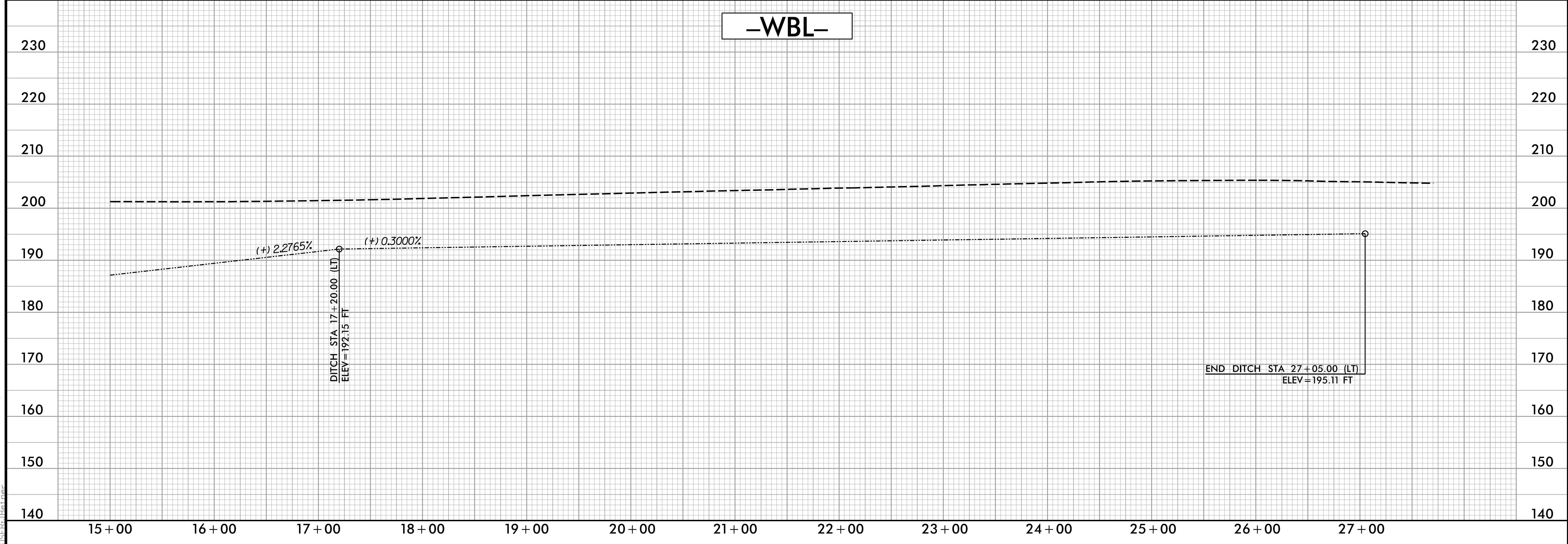
-WBL-



FOR -DR2- PLAN, SEE SHEET: 15

FOR -DR3- PLAN, SEE SHEET: 15

-WBL-



12/14/2020 10:56:00 rdu_psh_50_p1.dgn