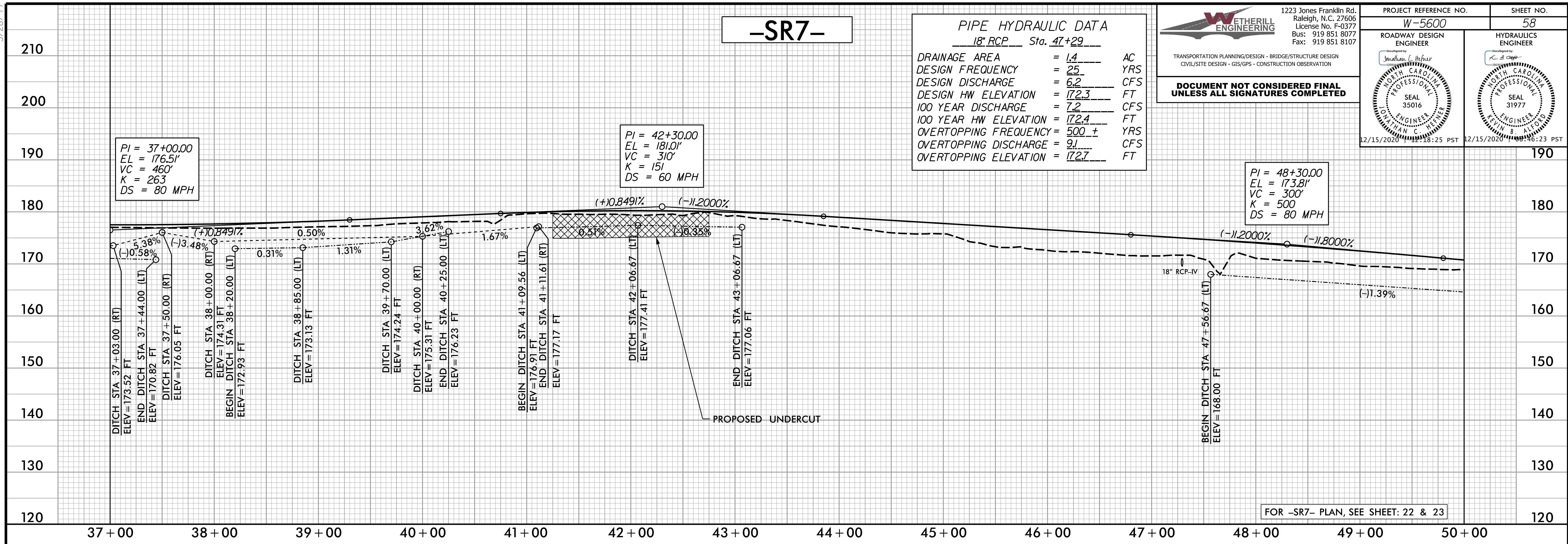


5/28/20



PIPE HYDRAULIC DATA
18" RCP Sta. 47+29

DRAINAGE AREA	= 1.4	AC
DESIGN FREQUENCY	= 25	YRS
DESIGN DISCHARGE	= 6.2	CFS
DESIGN HW ELEVATION	= 172.3	FT
100 YEAR DISCHARGE	= 7.2	CFS
100 YEAR HW ELEVATION	= 172.4	FT
OVERTOPPING FREQUENCY	= 500 ±	YRS
OVERTOPPING DISCHARGE	= 9.1	CFS
OVERTOPPING ELEVATION	= 172.7	FT

WETHERILL ENGINEERING
1223 Jones Franklin Rd.
Raleigh, N.C. 27606
License No. F-0377
Bus: 919 851 8077
Fax: 919 851 8107

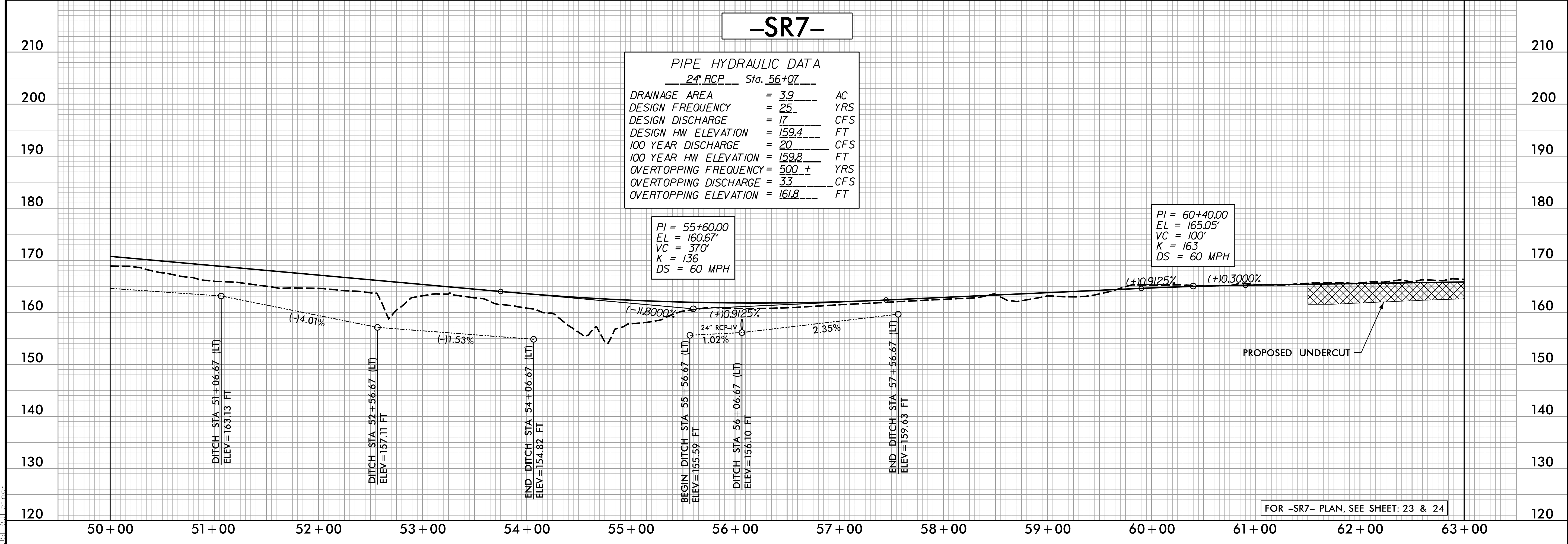
TRANSPORTATION PLANNING/DESIGN - BRIDGE/STRUCTURE DESIGN
CIVIL/SITE DESIGN - GIS/GPS - CONSTRUCTION OBSERVATION

**DOCUMENT NOT CONSIDERED FINAL
UNLESS ALL SIGNATURES COMPLETED**

PROJECT REFERENCE NO.	W-5600	SHEET NO.	58
ROADWAY DESIGN ENGINEER	<i>Jonathan C. Heiser</i>	HYDRAULICS ENGINEER	<i>K. S. Cooper</i>
SEAL 35016		SEAL 31977	
12/15/2020 12:28:25 PST		12/15/2020 14:06:23 PST	

FOR -SR7- PLAN, SEE SHEET: 22 & 23

12/14/2020 10:56:00_r.dwg_psh_58_p1.dgn



PIPE HYDRAULIC DATA
24" RCP Sta. 56+07

DRAINAGE AREA	= 3.9	AC
DESIGN FREQUENCY	= 25	YRS
DESIGN DISCHARGE	= 17	CFS
DESIGN HW ELEVATION	= 159.4	FT
100 YEAR DISCHARGE	= 20	CFS
100 YEAR HW ELEVATION	= 159.8	FT
OVERTOPPING FREQUENCY	= 500 ±	YRS
OVERTOPPING DISCHARGE	= 33	CFS
OVERTOPPING ELEVATION	= 161.8	FT

FOR -SR7- PLAN, SEE SHEET: 23 & 24