

5/28/99

WETHERILL ENGINEERING
1223 Jones Franklin Rd.
Raleigh, N.C. 27606
License No. F-0377
Bus: 919 851 8077
Fax: 919 851 8107

PROJECT REFERENCE NO. W-5600	SHEET NO. 52
ROADWAY DESIGN ENGINEER <i>Jonathan C. Reeves</i> SEAL 35016 12/15/2020 16:25 PST	HYDRAULICS ENGINEER <i>K. B. Clegg</i> SEAL 31977 12/15/2020 16:23 PST

TRANSPORTATION PLANNING/DESIGN - BRIDGE/STRUCTURE DESIGN
CIVIL/SITE DESIGN - GIS/GPS - CONSTRUCTION OBSERVATION

**DOCUMENT NOT CONSIDERED FINAL
UNLESS ALL SIGNATURES COMPLETED**

-SR2-

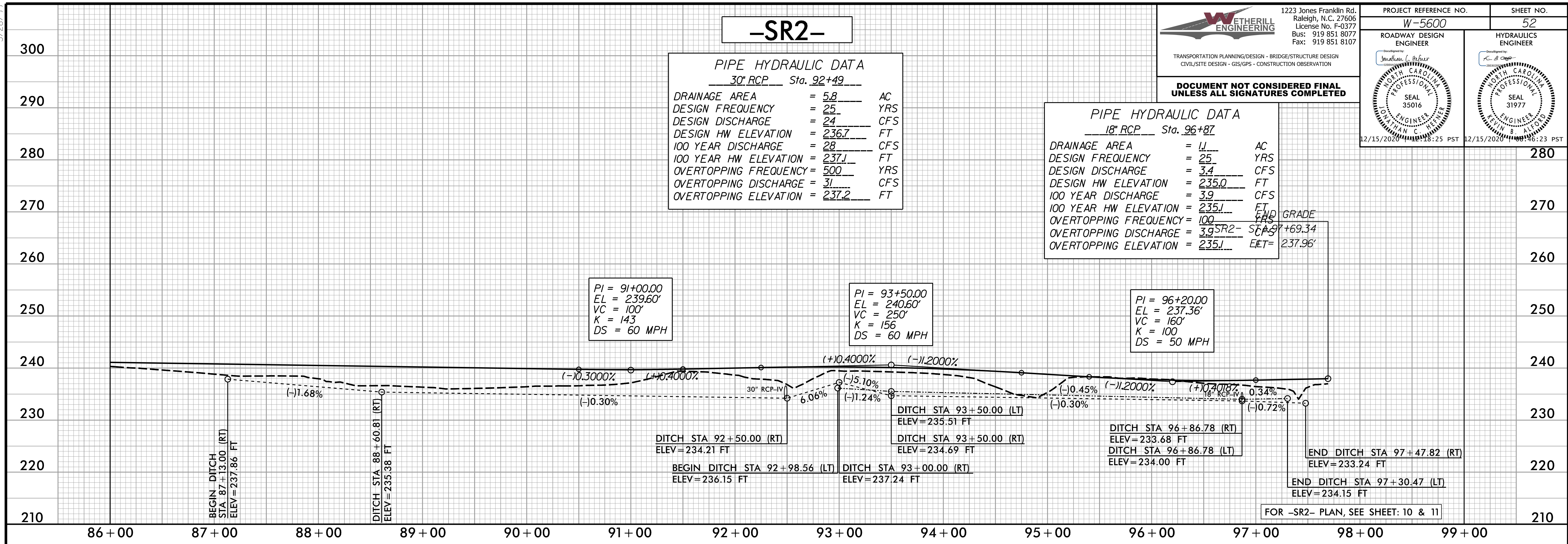
PIPE HYDRAULIC DATA
30" RCP Sta. 92+49

DRAINAGE AREA	= 5.8	AC
DESIGN FREQUENCY	= 25	YRS
DESIGN DISCHARGE	= 24	CFS
DESIGN HW ELEVATION	= 236.7	FT
100 YEAR DISCHARGE	= 28	CFS
100 YEAR HW ELEVATION	= 237.1	FT
OVERTOPPING FREQUENCY	= 500	YRS
OVERTOPPING DISCHARGE	= 31	CFS
OVERTOPPING ELEVATION	= 237.2	FT

PIPE HYDRAULIC DATA
18" RCP Sta. 96+87

DRAINAGE AREA	= 1.1	AC
DESIGN FREQUENCY	= 25	YRS
DESIGN DISCHARGE	= 3.4	CFS
DESIGN HW ELEVATION	= 235.0	FT
100 YEAR DISCHARGE	= 3.9	CFS
100 YEAR HW ELEVATION	= 235.1	FT
OVERTOPPING FREQUENCY	= 100	YRS
OVERTOPPING DISCHARGE	= 3.9	CFS
OVERTOPPING ELEVATION	= 235.1	FT

END DITCH STA 97+30.47 (LT)
ELEV=234.15 FT

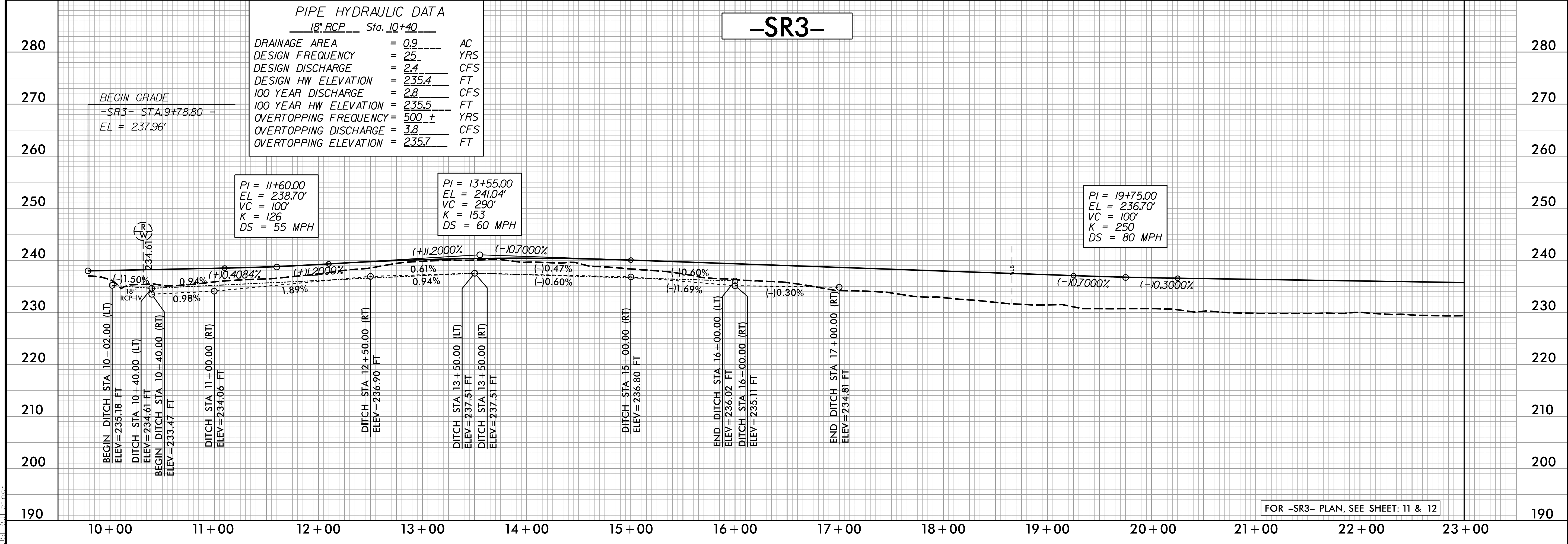


FOR -SR2- PLAN, SEE SHEET: 10 & 11

-SR3-

PIPE HYDRAULIC DATA
18" RCP Sta. 10+40

DRAINAGE AREA	= 0.9	AC
DESIGN FREQUENCY	= 25	YRS
DESIGN DISCHARGE	= 2.4	CFS
DESIGN HW ELEVATION	= 235.4	FT
100 YEAR DISCHARGE	= 2.8	CFS
100 YEAR HW ELEVATION	= 235.5	FT
OVERTOPPING FREQUENCY	= 500	YRS
OVERTOPPING DISCHARGE	= 3.8	CFS
OVERTOPPING ELEVATION	= 235.7	FT



FOR -SR3- PLAN, SEE SHEET: 11 & 12

12/14/2020 11:58:13 AM
I:\Projects\5600_rdy_psh_52_p1.dgn