

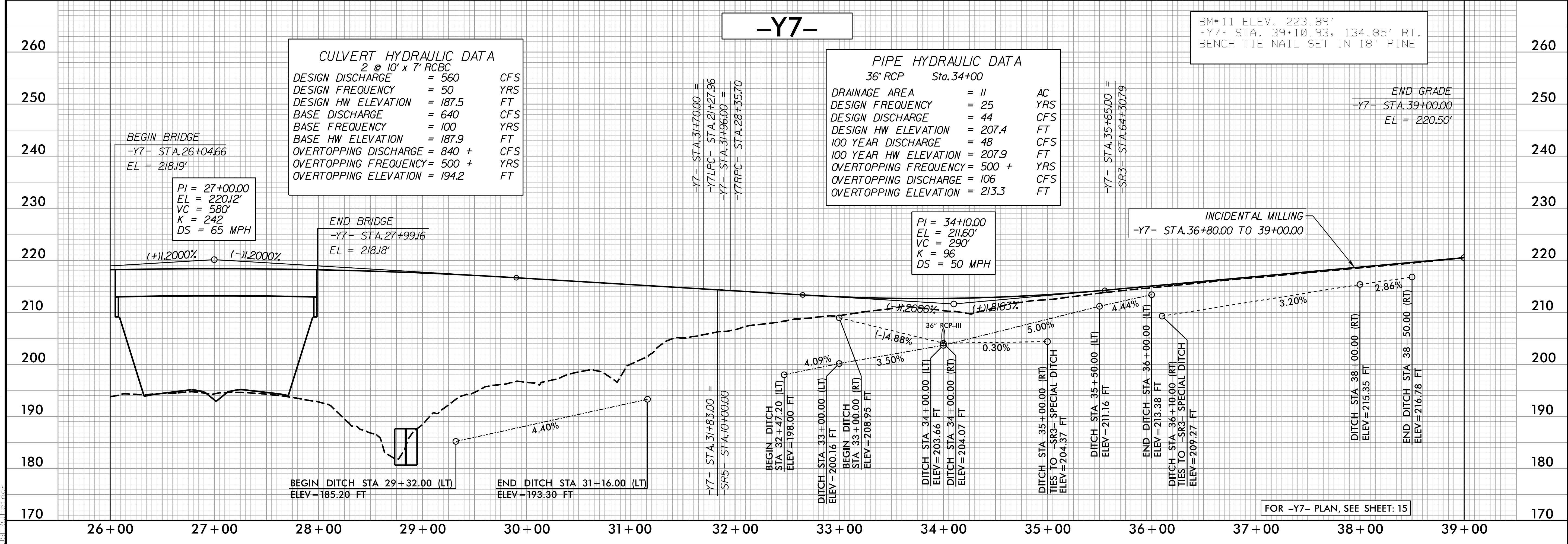
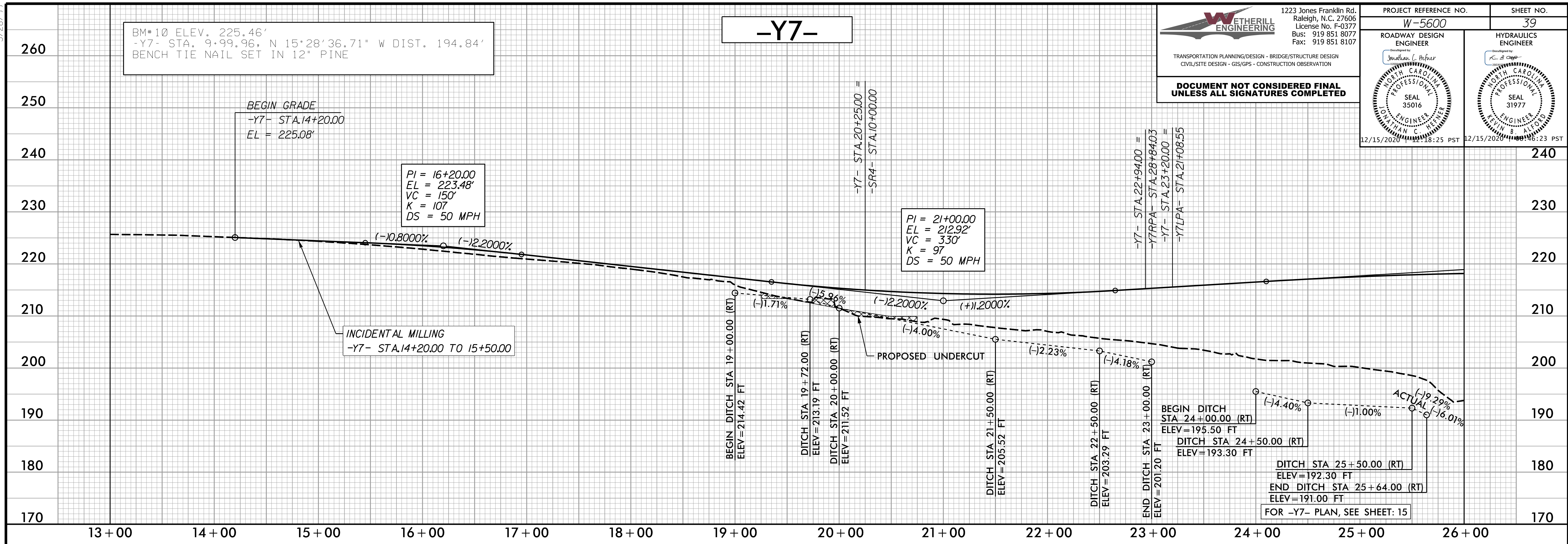
5/28/19

WETHERILL ENGINEERING
 1223 Jones Franklin Rd.
 Raleigh, N.C. 27606
 License No. F-0377
 Bus: 919 851 8077
 Fax: 919 851 8107

TRANSPORTATION PLANNING/DESIGN - BRIDGE/STRUCTURE DESIGN
 CIVIL/SITE DESIGN - GIS/GPS - CONSTRUCTION OBSERVATION

**DOCUMENT NOT CONSIDERED FINAL
 UNLESS ALL SIGNATURES COMPLETED**

PROJECT REFERENCE NO. W-5600	SHEET NO. 39
ROADWAY DESIGN ENGINEER <i>Jonathan C. Heifer</i>	HYDRAULICS ENGINEER <i>K. S. ...</i>
SEAL 35016 12/15/2020 12:18:25 PST	SEAL 31977 12/15/2020 10:08:23 PST



CULVERT HYDRAULIC DATA
 2 @ 10' x 7' RCBC

DESIGN DISCHARGE	= 560	CFS
DESIGN FREQUENCY	= 50	YRS
DESIGN HW ELEVATION	= 187.5	FT
BASE DISCHARGE	= 640	CFS
BASE FREQUENCY	= 100	YRS
BASE HW ELEVATION	= 187.9	FT
OVERTOPPING DISCHARGE	= 840 +	CFS
OVERTOPPING FREQUENCY	= 500 +	YRS
OVERTOPPING ELEVATION	= 194.2	FT

PIPE HYDRAULIC DATA
 36" RCP Sta. 34+00

DRAINAGE AREA	= 11	AC
DESIGN FREQUENCY	= 25	YRS
DESIGN DISCHARGE	= 44	CFS
DESIGN HW ELEVATION	= 207.4	FT
100 YEAR DISCHARGE	= 48	CFS
100 YEAR HW ELEVATION	= 207.9	FT
OVERTOPPING FREQUENCY	= 500 +	YRS
OVERTOPPING DISCHARGE	= 106	CFS
OVERTOPPING ELEVATION	= 213.3	FT

12/14/2020 10:56:00_rdy_psh_39_p1.dgn