

5/28/99

WETHERILL ENGINEERING
1223 Jones Franklin Rd.
Raleigh, N.C. 27606
License No. F-0377
Bus: 919 851 8077
Fax: 919 851 8107

PROJECT REFERENCE NO. W-5600	SHEET NO. 33
ROADWAY DESIGN ENGINEER <i>Jonathan C. Heiser</i> SEAL 35016 12/15/2020 10:46:23 PST	HYDRAULICS ENGINEER <i>K. S. Orop</i> SEAL 31977 12/15/2020 10:46:23 PST

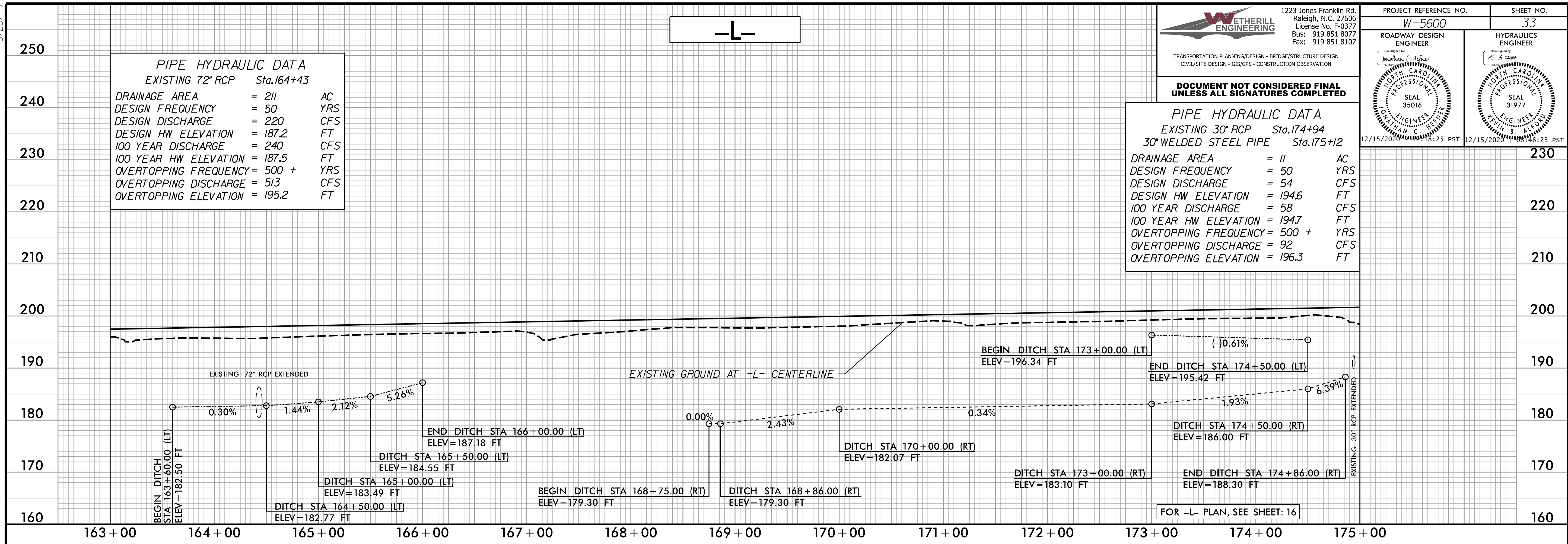
DOCUMENT NOT CONSIDERED FINAL UNLESS ALL SIGNATURES COMPLETED

PIPE HYDRAULIC DATA
EXISTING 72" RCP Sta.164+43

DRAINAGE AREA	= 211	AC
DESIGN FREQUENCY	= 50	YRS
DESIGN DISCHARGE	= 220	CFS
DESIGN HW ELEVATION	= 187.2	FT
100 YEAR DISCHARGE	= 240	CFS
100 YEAR HW ELEVATION	= 187.5	FT
OVERTOPPING FREQUENCY	= 500 +	YRS
OVERTOPPING DISCHARGE	= 513	CFS
OVERTOPPING ELEVATION	= 195.2	FT

PIPE HYDRAULIC DATA
EXISTING 30" RCP Sta.174+94
30" WELDED STEEL PIPE Sta.175+12

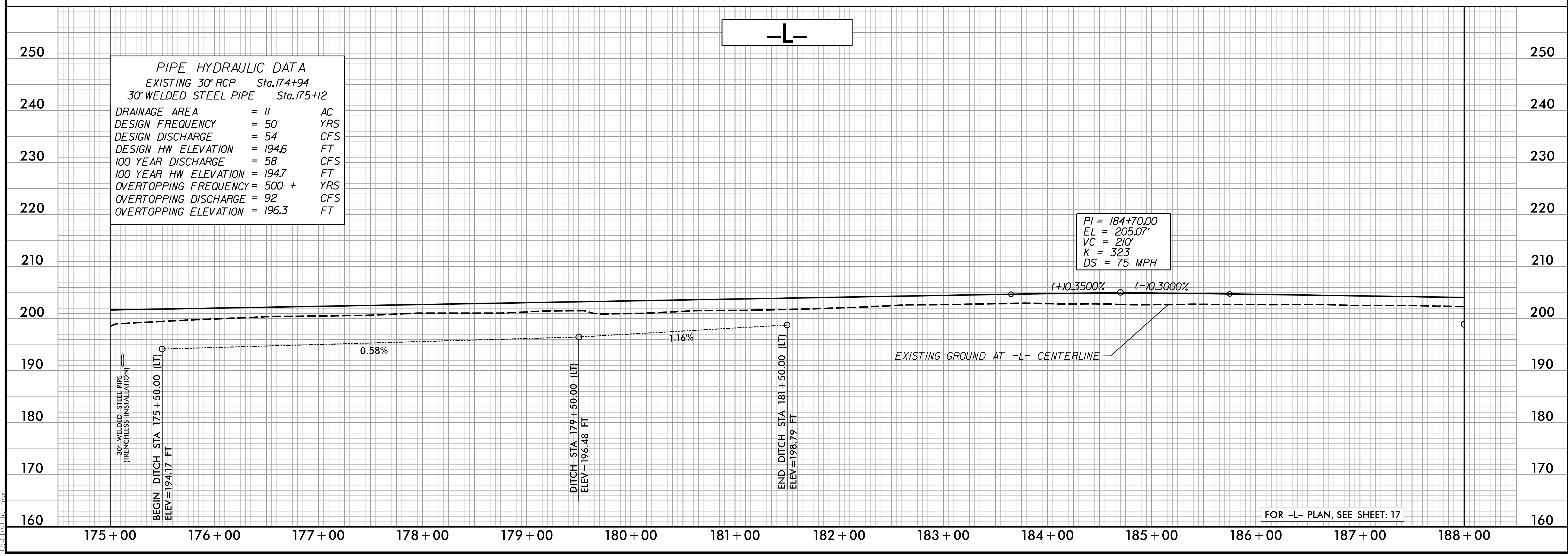
DRAINAGE AREA	= 11	AC
DESIGN FREQUENCY	= 50	YRS
DESIGN DISCHARGE	= 54	CFS
DESIGN HW ELEVATION	= 194.6	FT
100 YEAR DISCHARGE	= 58	CFS
100 YEAR HW ELEVATION	= 194.7	FT
OVERTOPPING FREQUENCY	= 500 +	YRS
OVERTOPPING DISCHARGE	= 92	CFS
OVERTOPPING ELEVATION	= 196.3	FT



PIPE HYDRAULIC DATA
EXISTING 30" RCP Sta.174+94
30" WELDED STEEL PIPE Sta.175+12

DRAINAGE AREA	= 11	AC
DESIGN FREQUENCY	= 50	YRS
DESIGN DISCHARGE	= 54	CFS
DESIGN HW ELEVATION	= 194.6	FT
100 YEAR DISCHARGE	= 58	CFS
100 YEAR HW ELEVATION	= 194.7	FT
OVERTOPPING FREQUENCY	= 500 +	YRS
OVERTOPPING DISCHARGE	= 92	CFS
OVERTOPPING ELEVATION	= 196.3	FT

PI = 184+70.00
EL = 205.07'
VC = 210'
K = 323
DS = 75 MPH



12/14/2020 10:56:00_rdy_psh_33_p1.dgn