

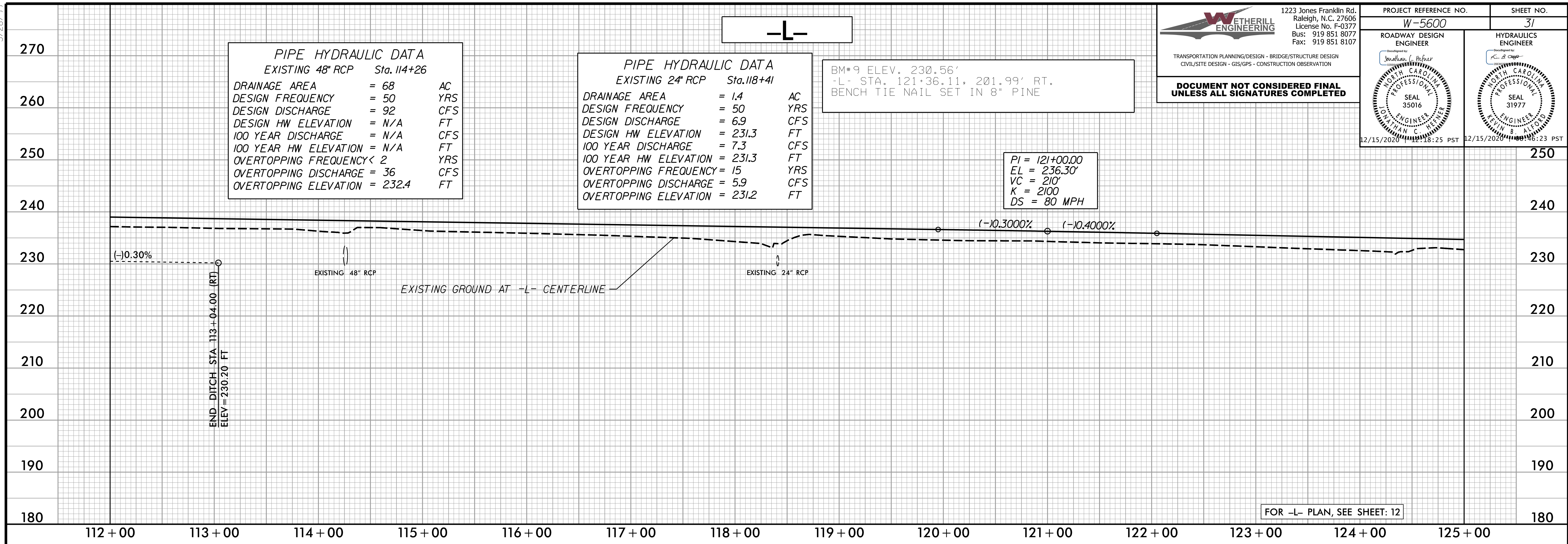
5/28/19

WETHERILL ENGINEERING
 1223 Jones Franklin Rd.
 Raleigh, N.C. 27606
 License No. F-0377
 Bus: 919 851 8077
 Fax: 919 851 8107

TRANSPORTATION PLANNING/DESIGN - BRIDGE/STRUCTURE DESIGN
 CIVIL/SITE DESIGN - GIS/GPS - CONSTRUCTION OBSERVATION

**DOCUMENT NOT CONSIDERED FINAL
 UNLESS ALL SIGNATURES COMPLETED**

PROJECT REFERENCE NO. W-5600	SHEET NO. 31
ROADWAY DESIGN ENGINEER <i>Jonathan L. Peifer</i>	HYDRAULICS ENGINEER <i>A. J. Case</i>
SEAL 35016 12/15/2020 12:18:25 PST	SEAL 31977 12/15/2020 12:18:23 PST



PIPE HYDRAULIC DATA
 EXISTING 48" RCP Sta. 114+26

DRAINAGE AREA	= 68	AC
DESIGN FREQUENCY	= 50	YRS
DESIGN DISCHARGE	= 92	CFS
DESIGN HW ELEVATION	= N/A	FT
100 YEAR DISCHARGE	= N/A	CFS
100 YEAR HW ELEVATION	= N/A	FT
OVERTOPPING FREQUENCY	< 2	YRS
OVERTOPPING DISCHARGE	= 36	CFS
OVERTOPPING ELEVATION	= 232.4	FT

PIPE HYDRAULIC DATA
 EXISTING 24" RCP Sta. 118+41

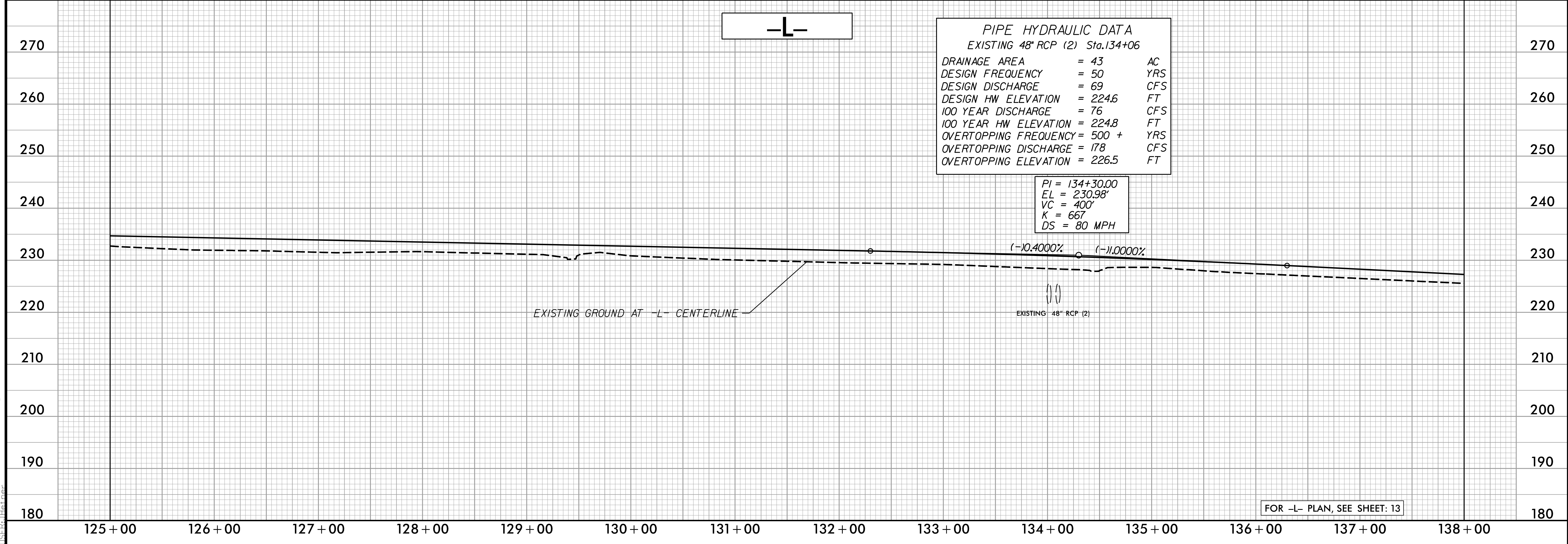
DRAINAGE AREA	= 1.4	AC
DESIGN FREQUENCY	= 50	YRS
DESIGN DISCHARGE	= 6.9	CFS
DESIGN HW ELEVATION	= 231.3	FT
100 YEAR DISCHARGE	= 7.3	CFS
100 YEAR HW ELEVATION	= 231.3	FT
OVERTOPPING FREQUENCY	= 15	YRS
OVERTOPPING DISCHARGE	= 5.9	CFS
OVERTOPPING ELEVATION	= 231.2	FT

BM#9 ELEV. 230.56'
 -L- STA. 121+36.11, 201.99' RT.
 BENCH TIE NAIL SET IN 8" PINE

PI = 121+00.00
 EL = 236.30'
 VC = 210'
 K = 2100
 DS = 80 MPH

FOR -L- PLAN, SEE SHEET: 12

12/14/2020 11:55:13 AM W-5600_rdy_psh_31_p1.dgn



PIPE HYDRAULIC DATA
 EXISTING 48" RCP (2) Sta. 134+06

DRAINAGE AREA	= 43	AC
DESIGN FREQUENCY	= 50	YRS
DESIGN DISCHARGE	= 69	CFS
DESIGN HW ELEVATION	= 224.6	FT
100 YEAR DISCHARGE	= 76	CFS
100 YEAR HW ELEVATION	= 224.8	FT
OVERTOPPING FREQUENCY	= 500 +	YRS
OVERTOPPING DISCHARGE	= 178	CFS
OVERTOPPING ELEVATION	= 226.5	FT

PI = 134+30.00
 EL = 230.98'
 VC = 400'
 K = 667
 DS = 80 MPH

FOR -L- PLAN, SEE SHEET: 13