

8/17/99

WETHERILL ENGINEERING
 1223 Jones Franklin Rd.
 Raleigh, N.C. 27606
 License No. F-0377
 Bus: 919 851 8077
 Fax: 919 851 8107

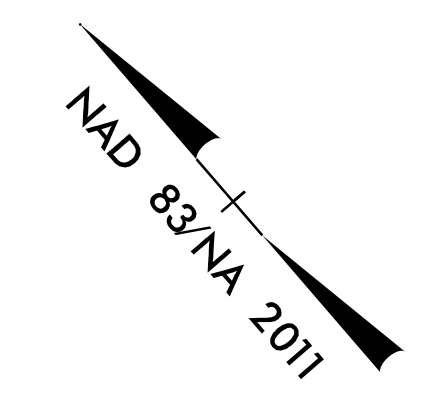
TRANSPORTATION PLANNING/DESIGN - BRIDGE/STRUCTURE DESIGN
 CIVIL/SITE DESIGN - GIS/GPS - CONSTRUCTION OBSERVATION

**DOCUMENT NOT CONSIDERED FINAL
 UNLESS ALL SIGNATURES COMPLETED**

PROJECT REFERENCE NO. W-5600	SHEET NO. 23
Roadway Design ENGINEER: 18:25 PST 12/15/2020	Hydraulics ENGINEER: 18:46:23 PST 12/15/2020
Professional Engineer Seal SEAL 35016 WETHERILL ENGINEERING	Professional Engineer Seal SEAL 31977 WETHERILL ENGINEERING

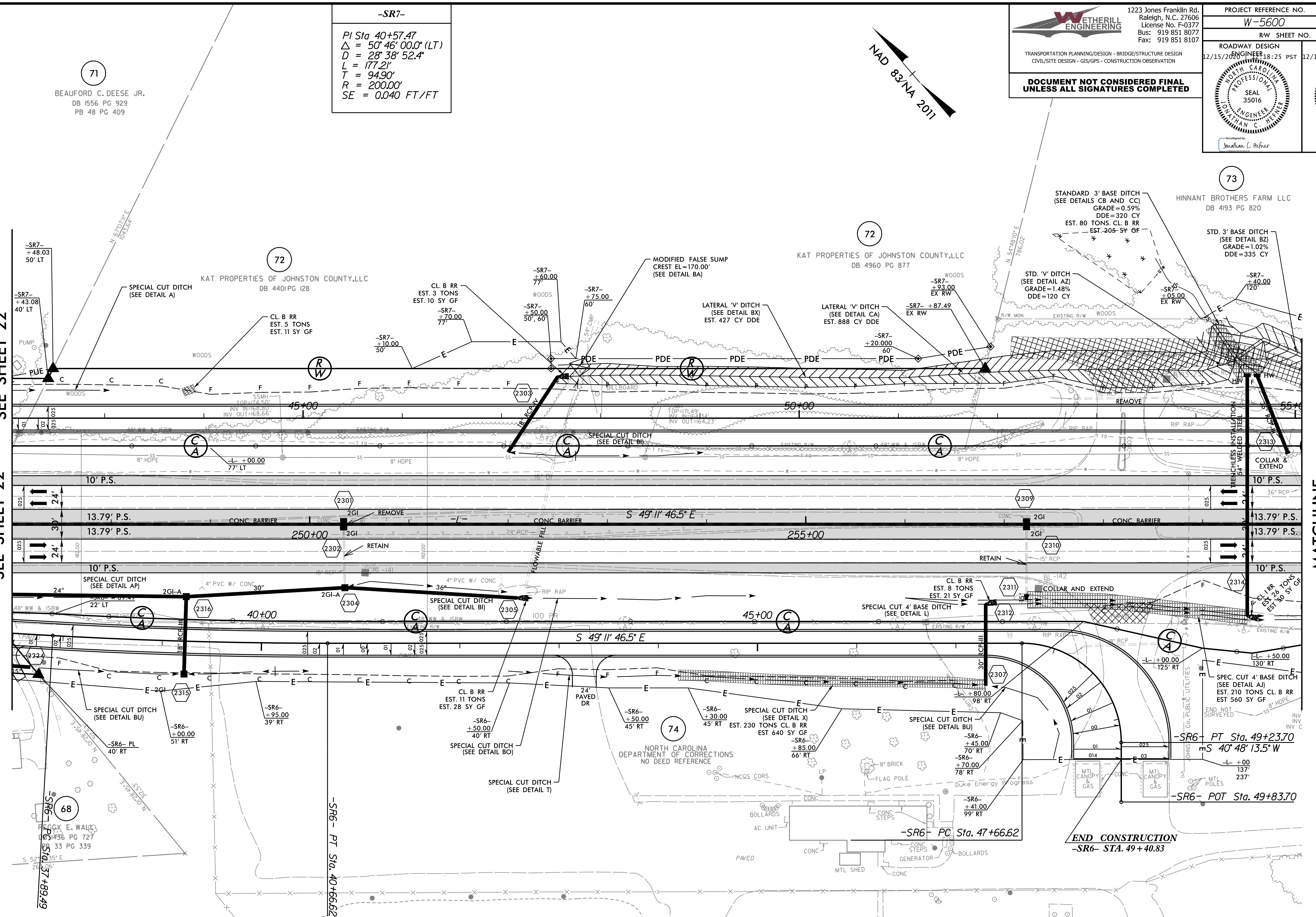
-SR7-

PI Sta 40+57.47
 $\Delta = 50' 46' 00.0" (LT)$
 $D = 28' 38' 52.4"$
 $L = 177.21'$
 $T = 94.90'$
 $R = 200.00'$
 $SE = 0.040 FT/FT$



MATCHLINE
-L- STA. 247+00
-SR7- STA. 42+05
SEE SHEET 22

MATCHLINE
-L- STA. 260+00
SEE SHEET 24



-SR6-

PI Sta 39+28.09 $\Delta = 3' 12' 51.0" (LT)$ $D = 1' 09' 35.4"$ $L = 277.12'$ $T = 138.60'$ $R = 4,940.00'$ $SE = RC$	PI Sta 48+66.62 $\Delta = 90' 00' 00.0" (RT)$ $D = 57' 17' 44.8"$ $L = 157.08'$ $T = 100.00'$ $R = 100.00'$ $SE = 0.040 FT/FT$
---	--

FOR -L- PROFILE, SEE SHEET: 36
 FOR -SR6- PROFILE, SEE SHEET: 55 & 56
 FOR -SR7- PROFILE, SEE SHEET: 57 & 58
 FOR DRAINAGE DETAILS, SEE SHEETS: 2D-1 THRU 2D-3
 FOR PARALLEL ENDWALLS, SEE SHEET: 2C-8 THRU 2C-11

REVISIONS

12/14/2020
12/15/2020
11:58:13 AM
W-5600_rdy_psh_23.dgn