

WETHERILL ENGINEERING
 1223 Jones Franklin Rd.
 Raleigh, N.C. 27606
 License No. F-0377
 Bus: 919 851 8077
 Fax: 919 851 8107

TRANSPORTATION PLANNING/DESIGN - BRIDGE/STRUCTURE DESIGN
 CIVIL/SITE DESIGN - GIS/GPS - CONSTRUCTION OBSERVATION

**DOCUMENT NOT CONSIDERED FINAL
 UNLESS ALL SIGNATURES COMPLETED**

PROJECT REFERENCE NO. W-5600	SHEET NO. 21
ROADWAY DESIGN ENGINEER: 18:25 PST 12/15/2020	HYDRAULICS ENGINEER: 16:23 PST 12/15/2020

SEAL 35016
 SEAL 31977

-Y9RPA-

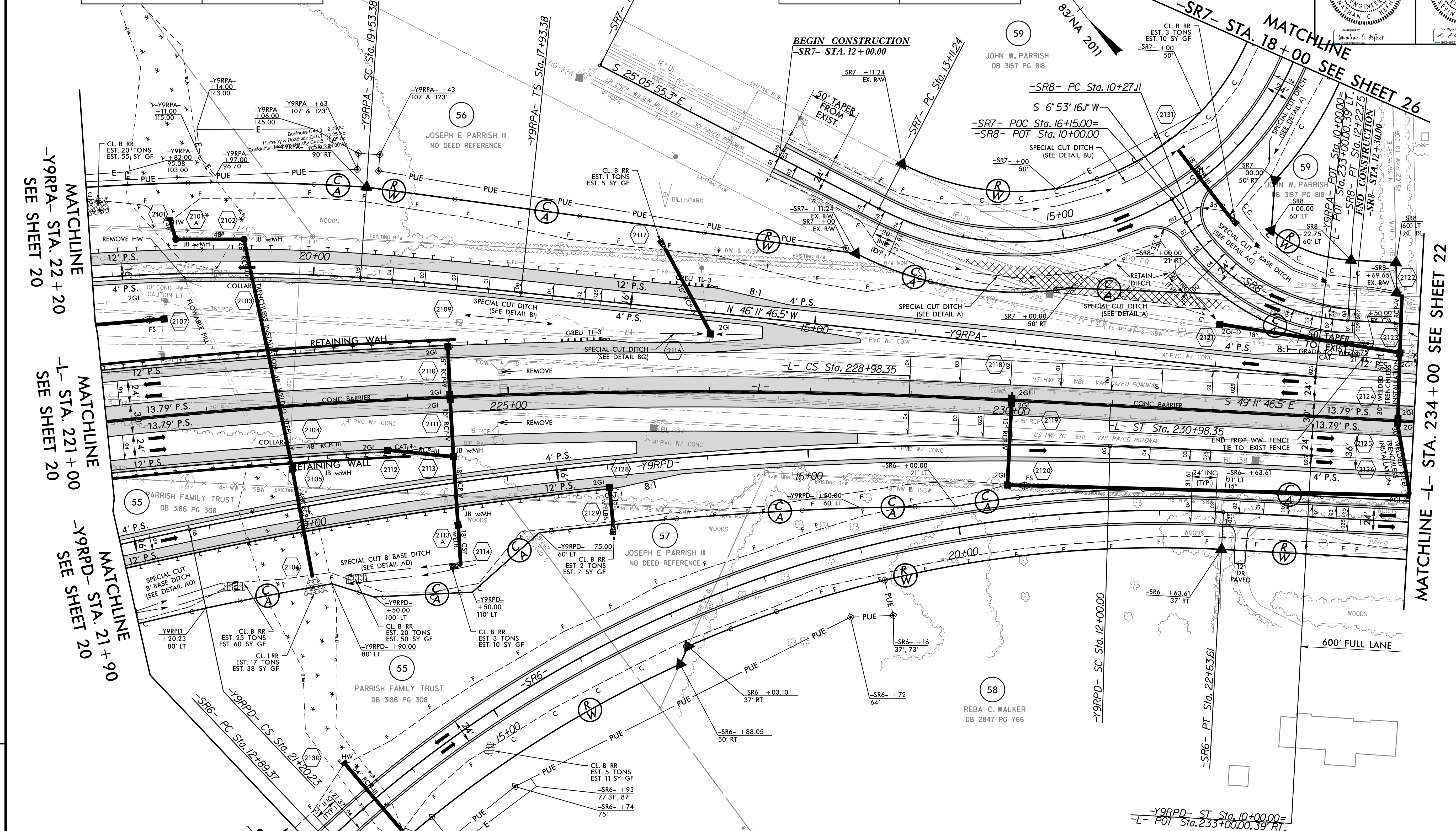
PIs Sta 19+00.06 Δs = 2° 17' 30.6" Ls = 160.00' LT = 106.68' ST = 53.34'	PI Sta 22+56.53 Δ = 17° 14' 15.9" (LT) D = 2° 51' 53.2" L = 601.71' T = 303.15' R = 2,000.00' SE = 0.050 FT/FT
--	--

-SR7-

PI Sta 18+13.57 Δ = 118° 18' 26.5" (LT) D = 19° 05' 54.9" L = 619.46' T = 502.33' R = 300.00' SE = 0.040 FT/FT	-SR8-
--	--------------

-SR8-

PI Sta 11+33.56 Δ = 56° 02' 52.1" (LT) D = 28° 38' 52.4" L = 195.64' T = 106.45' R = 200.00' SE = 0.040 FT/FT



MATCHLINE -Y9RPA- STA. 22+20 SEE SHEET 20
 MATCHLINE -L- STA. 221+00 SEE SHEET 20
 MATCHLINE -Y9RPD- STA. 21+90 SEE SHEET 20

MATCHLINE -SR7- STA. 18+00 SEE SHEET 26
 MATCHLINE -SR8- STA. 18+00 SEE SHEET 26
 MATCHLINE -L- STA. 234+00 SEE SHEET 22

-L-	-Y9RPD-	-SR6-
PIs Sta 213+20.68 Δ = 32° 01' 53.3" (RT) D = 0° 59' 16.3" Ls = 200.00' LT = 3,242.52' T = 1,664.85' R = 5,800.00' SE = 0.040 FT/FT	PIs Sta 11+33.34 Δs = 0° 59' 16.3" Ls = 200.00' LT = 133.34' ST = 66.67'	PIs Sta 16+62.26 Δ = 13° 31' 09.6" (LT) D = 1° 28' 08.8" Ls = 200.00' LT = 920.23' T = 462.26' R = 3,900.00' SE = 0.050 FT/FT
PIs Sta 229+65.02 Δs = 0° 59' 16.3" Ls = 200.00' LT = 133.34' ST = 66.67'	PIs Sta 21+86.90 Δs = 1° 28' 08.8" Ls = 200.00' LT = 133.34' ST = 66.67'	PIs Sta 18+05.14 Δ = 46° 31' 00.0" (RT) D = 4° 46' 28.7" Ls = 974.24' T = 515.77' R = 1,200.00' SE = 0.040 FT/FT

FOR -L- PROFILE, SEE SHEET: 35
 FOR -Y9RPA- PROFILE, SEE SHEET: 44
 FOR -Y9RPD- PROFILE, SEE SHEET: 46
 FOR -SR6- PROFILE, SEE SHEET: 55
 FOR -SR7- PROFILE, SEE SHEET: 56
 FOR -SR8- PROFILE, SEE SHEET: 59
 FOR DRAINAGE DETAILS, SEE SHEETS: 2D-1 THRU 2D-3
 FOR PARALLEL ENDWALLS, SEE SHT.: 2C-8 THRU 2C-11

REVISIONS

12/14/2020
 11:58:13 AM
 W:\Projects\5600\21.dgn