

8.17.17.99

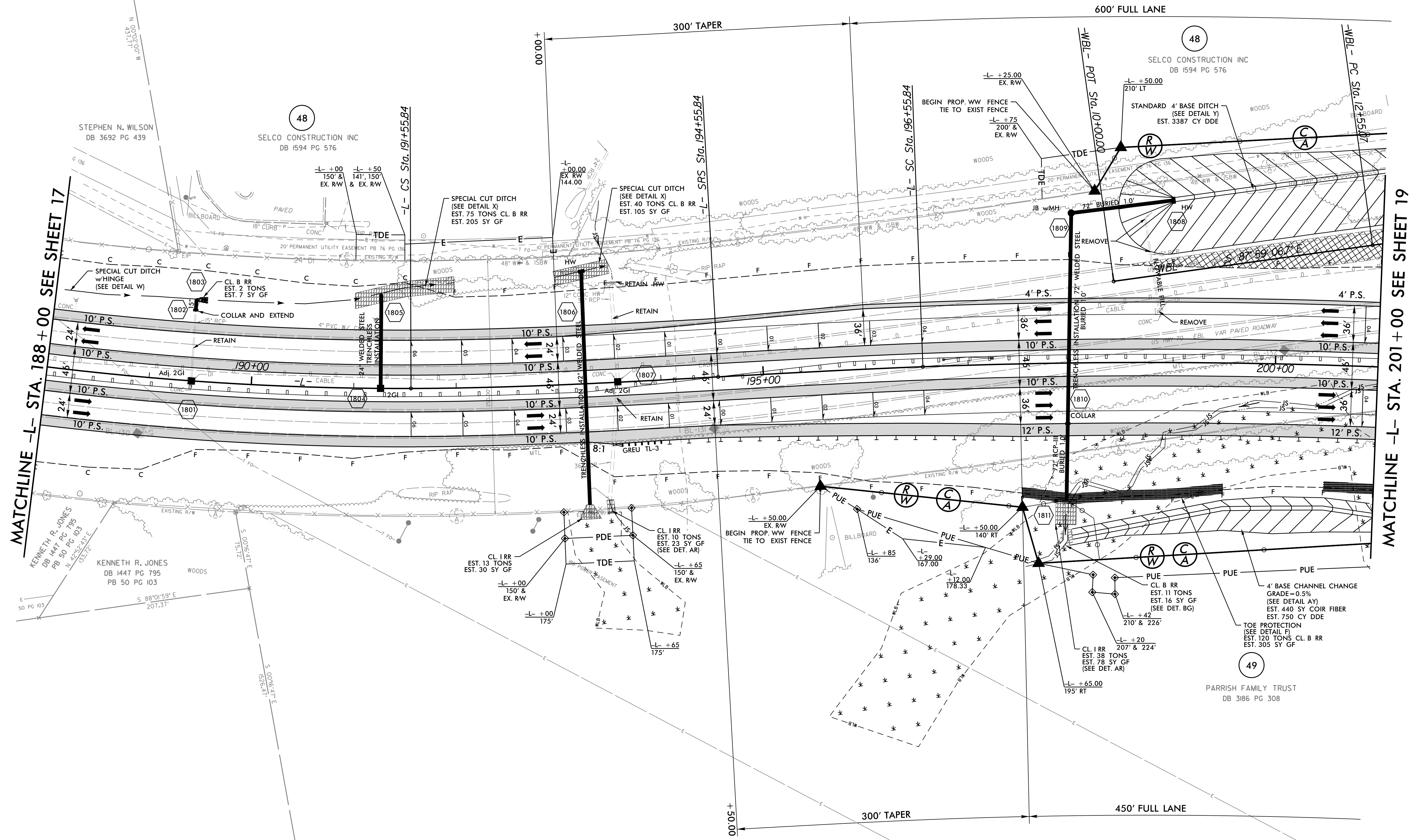
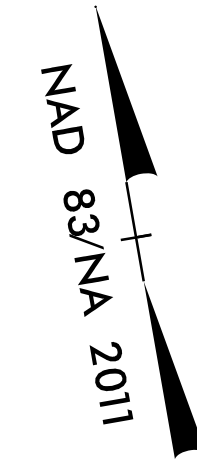
-L-			
PI Sta 185+23.96 $\Delta = 25^\circ 42' 56.8" (LT)$ $D = 2' 00' 00.0"$ $L = 285.79'$ $T = 653.91'$ $R = 2,864.79'$ $SE = 0.060 FT/FT$	PIs Sta 192+55.86 $\Theta_s = 3^\circ 00' 00.0"$ $L_s = 300.00'$ $LT = 200.03'$ $ST = 100.03'$	PIs Sta 195+89.17 $\Theta_s = 0^\circ 59' 16.3"$ $L_s = 200.00'$ $LT = 133.34'$ $ST = 66.67'$	PI Sta 213+20.68 $\Delta = 32^\circ 01' 53.3" (RT)$ $D = 0^\circ 59' 16.3"$ $L = 3,242.52'$ $T = 1,664.85'$ $R = 5,800.00'$ $SE = 0.040 FT/FT$

WETHERILL ENGINEERING
 1223 Jones Franklin Rd.
 Raleigh, N.C. 27606
 License No. F-0377
 Bus: 919 851 8077
 Fax: 919 851 8107

TRANSPORTATION PLANNING/DESIGN - BRIDGE/STRUCTURE DESIGN
 CIVIL/SITE DESIGN - GIS/GPS - CONSTRUCTION OBSERVATION

**DOCUMENT NOT CONSIDERED FINAL
 UNLESS ALL SIGNATURES COMPLETED**

PROJECT REFERENCE NO. W-5600	SHEET NO. 18
ROADWAY DESIGN ENGINEER 18:25 PST 12/15/2020	HYDRAULICS ENGINEER 18:23 PST 12/15/2020



REVISIONS

MATCHLINE -L- STA. 188+00 SEE SHEET 17

MATCHLINE -L- STA. 201+00 SEE SHEET 19

12/14/2020 05:00_rdu_psh_18.dgn

FOR -L- PROFILE, SEE SHEET: 34
 FOR DRAINAGE DETAILS, SEE SHEETS: 2D-1 THRU 2D-3
 FOR PARALLEL ENDWALLS, SEE SHEET: 2C-8 THRU 2C-11