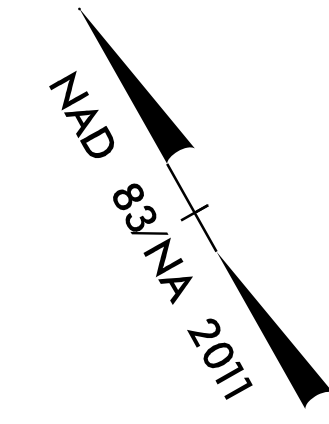


8/17/99

ROBERTS & WELLS INC.
DB 561 PG 113

-L-	
PIs Sta 177+70.08	PI Sta 185+23.96
$\Delta s = 3'00''00.0''$	$\Delta = 25'42''56.8''$ (LT)
$Ls = 300.00'$	$D = 2'00''00.0''$
$LT = 200.03'$	$L = 1,285.79'$
$ST = 100.03'$	$T = 653.9'$
	$R = 2,864.79'$
	$SE = 0.060$ FT/FT



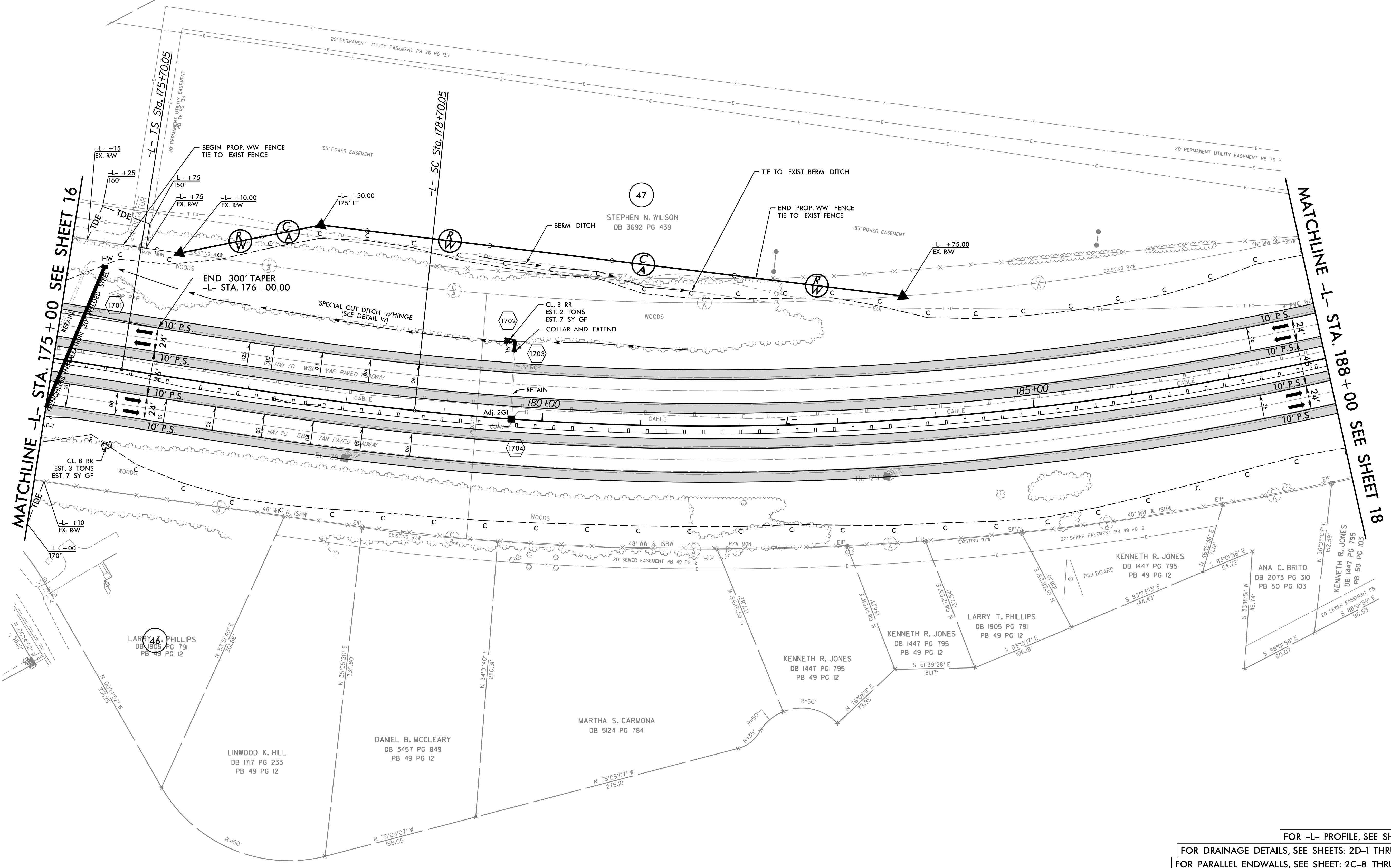
WETHERILL ENGINEERING
 1223 Jones Franklin Rd.
 Raleigh, N.C. 27606
 License No. F-0377
 Bus: 919 851 8077
 Fax: 919 851 8107

TRANSPORTATION PLANNING/DESIGN - BRIDGE/STRUCTURE DESIGN
 CIVIL/SITE DESIGN - GIS/GPS - CONSTRUCTION OBSERVATION

**DOCUMENT NOT CONSIDERED FINAL
 UNLESS ALL SIGNATURES COMPLETED**

PROJECT REFERENCE NO.	SHEET NO.
W-5600	17
RW SHEET NO.	
ROADWAY DESIGN ENGINEER 18:25 PST 12/15/2020	HYDRAULICS ENGINEER 18:25 PST 12/15/2020

REVISIONS



12/14/2020
W-5600_rdu_psh_17.dgn
11:56:11 AM

FOR -L- PROFILE, SEE SHEET: 33
 FOR DRAINAGE DETAILS, SEE SHEETS: 2D-1 THRU 2D-3
 FOR PARALLEL ENDWALLS, SEE SHEET: 2C-8 THRU 2C-11