

**WETHERILL ENGINEERING**  
 1223 Jones Franklin Rd.  
 Raleigh, N.C. 27606  
 License No. F-0377  
 Bus: 919 851 8077  
 Fax: 919 851 8107

TRANSPORTATION PLANNING/DESIGN - BRIDGE/STRUCTURE DESIGN  
 CIVIL/SITE DESIGN - GIS/GPS - CONSTRUCTION OBSERVATION

**DOCUMENT NOT CONSIDERED FINAL  
 UNLESS ALL SIGNATURES COMPLETED**

PROJECT REFERENCE NO. <b>W-5600</b>	SHEET NO. <b>11</b>
ROADWAY DESIGN ENGINEER 12/15/2020 10:25 PST	HYDRAULICS ENGINEER 12/15/2020 10:46:23 PST

**-L-**  
 PIs Sta 98+46.35  
 Es = 1'00'00.0"  
 Ls = 200.00'  
 LT = 133.34'  
 ST = 66.67'

MICHAEL P. WEIDNER  
 DB 1692 PG 549  
 PB 25 PG 171

PHYLLIS H. CREECH  
 DB 3783 PG 585  
 PB 25 PG 171

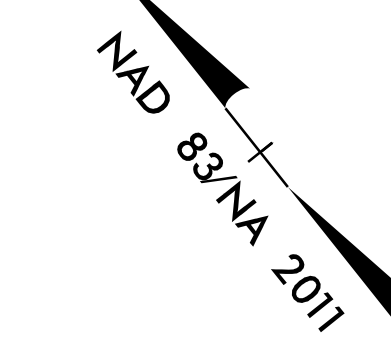
EDWARD S. TURLINGTON  
 DB 1173 PG 64

EDWARD S. TURLINGTON  
 DB 1173 PG 64

WAYNE N. STRICKLAND  
 DB 1079 PG 820

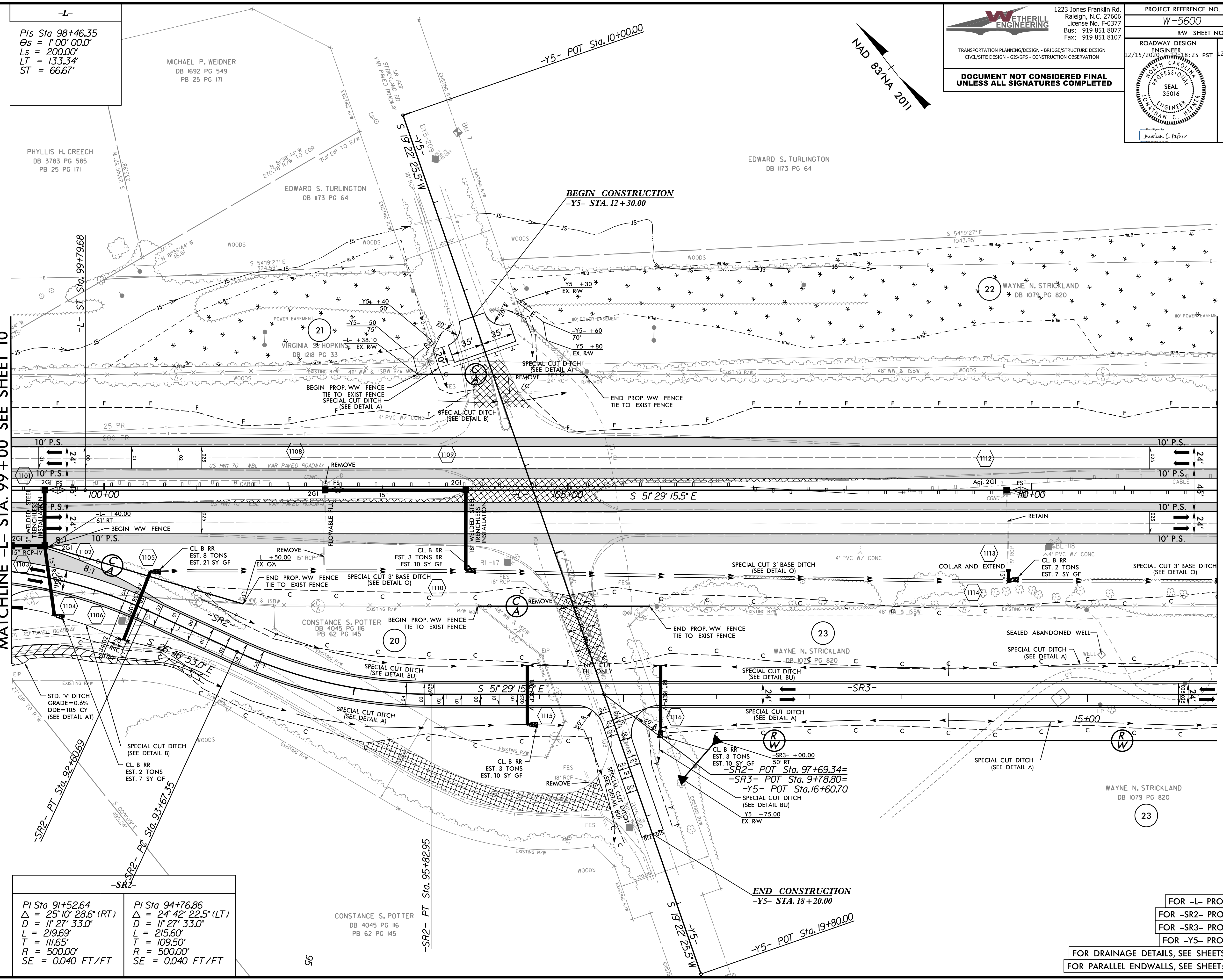
CONSTANCE S. POTTER  
 DB 4045 PG 116  
 PB 62 PG 145

WAYNE N. STRICKLAND  
 DB 1079 PG 820



MATCHLINE -L- STA. 99 + 00 SEE SHEET 10

MATCHLINE -L- STA. 112 + 00 SEE SHEET 12



PI Sta 91+52.64 $\Delta = 25'10'' 28.6'' (RT)$ $D = 11'27'' 33.0''$ $L = 219.69'$ $T = 111.65'$ $R = 500.00'$ $SE = 0.040 FT/FT$	PI Sta 94+76.86 $\Delta = 24'42'' 22.5'' (LT)$ $D = 11'27'' 33.0''$ $L = 215.60'$ $T = 109.50'$ $R = 500.00'$ $SE = 0.040 FT/FT$
--	--

CONSTANCE S. POTTER  
 DB 4045 PG 116  
 PB 62 PG 145

FOR -L- PROFILE, SEE SHEET: 30  
 FOR -SR2- PROFILE, SEE SHEET: 52  
 FOR -SR3- PROFILE, SEE SHEET: 52  
 FOR -Y5- PROFILE, SEE SHEET: 38  
 FOR DRAINAGE DETAILS, SEE SHEETS: 2D-1 THRU 2D-3  
 FOR PARALLEL ENDWALLS, SEE SHEET: 2C-8 THRU 2C-11

REVISIONS

12/14/2020  
 WETHERILL ENGINEERING  
 JLP:ash\_11.dgn