

8/17/99

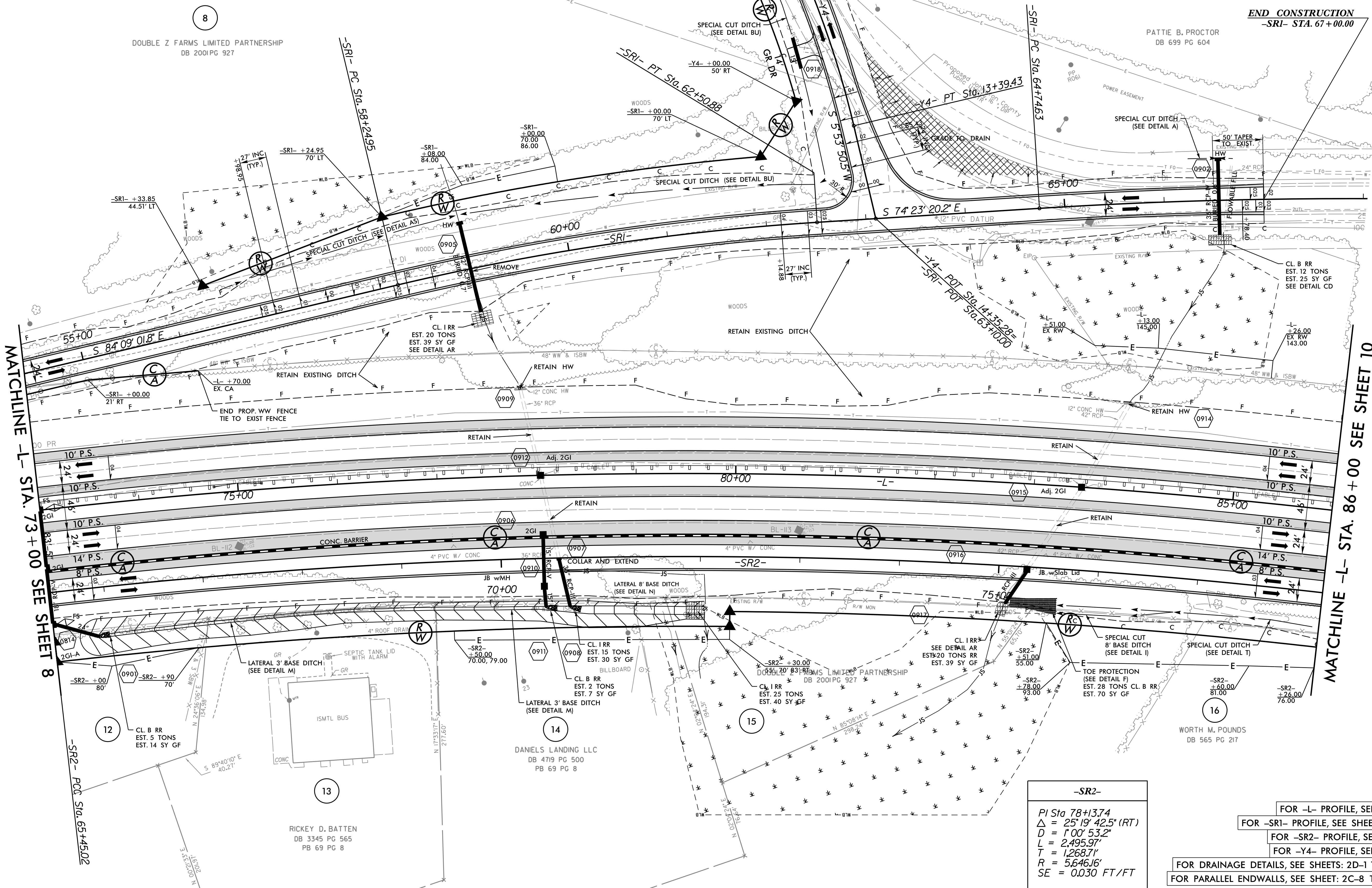
-L-	-Y4-	-SRI-	-SRI-
PI Sta 79+15.92	PI Sta 11+71.53	PI Sta 60+38.43	PI Sta 67+89.92
$\Delta = 38' 50'' 00.0''$ (RT)	$\Delta = 20' 21'' 57.8''$ (RT)	$\Delta = 9' 45'' 41.6''$ (RT)	$\Delta = 7' 20'' 47.4''$ (RT)
$D = 1' 00'' 00.0''$	$D = 6' 00'' 00.0''$	$D = 2' 17'' 30.6''$	$D = 1' 10'' 00.0''$
$L = 3,883.33'$	$L = 339.43'$	$L = 425.93'$	$L = 629.70'$
$T = 2,019.58'$	$T = 171.53'$	$T = 213.48'$	$T = 315.28'$
$R = 5,729.58'$	$R = 954.93'$	$R = 2,500.00'$	$R = 4,911.07'$
$SE = 0.040$ FT/FT	$SE = 0.040$ FT/FT	$SE = 0.040$ FT/FT	$SE = 0.025$ FT/FT

**WETHERILL ENGINEERING**  
 1223 Jones Franklin Rd.  
 Raleigh, N.C. 27606  
 License No. F-0377  
 Bus: 919 851 8077  
 Fax: 919 851 8107

TRANSPORTATION PLANNING/DESIGN - BRIDGE/STRUCTURE DESIGN  
 CIVIL/SITE DESIGN - GIS/GPS - CONSTRUCTION OBSERVATION

**DOCUMENT NOT CONSIDERED FINAL  
 UNLESS ALL SIGNATURES COMPLETED**

PROJECT REFERENCE NO. <b>W-5600</b>	SHEET NO. <b>9</b>
RW SHEET NO.	
ROADWAY DESIGN ENGINEER: 12/15/2020 18:25 PST	HYDRAULICS ENGINEER: 12/15/2020 16:23 PST
SEAL 35016	SEAL 31977



**-SR2-**

PI Sta 78+13.74
$\Delta = 25' 19'' 42.5''$ (RT)
$D = 1' 00'' 53.2''$
$L = 2,495.97'$
$T = 1,268.71'$
$R = 5,646.16'$
$SE = 0.030$ FT/FT

- FOR -L- PROFILE, SEE SHEET: 29
- FOR -SRI- PROFILE, SEE SHEET: 48 & 49
- FOR -SR2- PROFILE, SEE SHEET: 51
- FOR -Y4- PROFILE, SEE SHEET: 38
- FOR DRAINAGE DETAILS, SEE SHEETS: 2D-1 THRU 2D-3
- FOR PARALLEL ENDWALLS, SEE SHEET: 2C-8 THRU 2C-11

REVISIONS

12/14/2020  
C:\5600\_r.dwg\_psh\_09.dgn