

8/17/99

-L-	-SRI-
$PI\ Sta\ 79+15.92$ $\Delta = 38' 50' 00.0'' (RT)$ $D = 1' 00' 00.0''$ $L = 3,883.33'$ $T = 2,019.58'$ $R = 5,729.58'$ $SE = 0.040\ FT/FT$	$PI\ Sta\ 40+05.45$ $\Delta = 12' 28' 50.9'' (RT)$ $D = 0' 58' 52.2''$ $L = 1,272.04'$ $T = 638.55'$ $R = 5,839.58'$ $SE = EXIST$

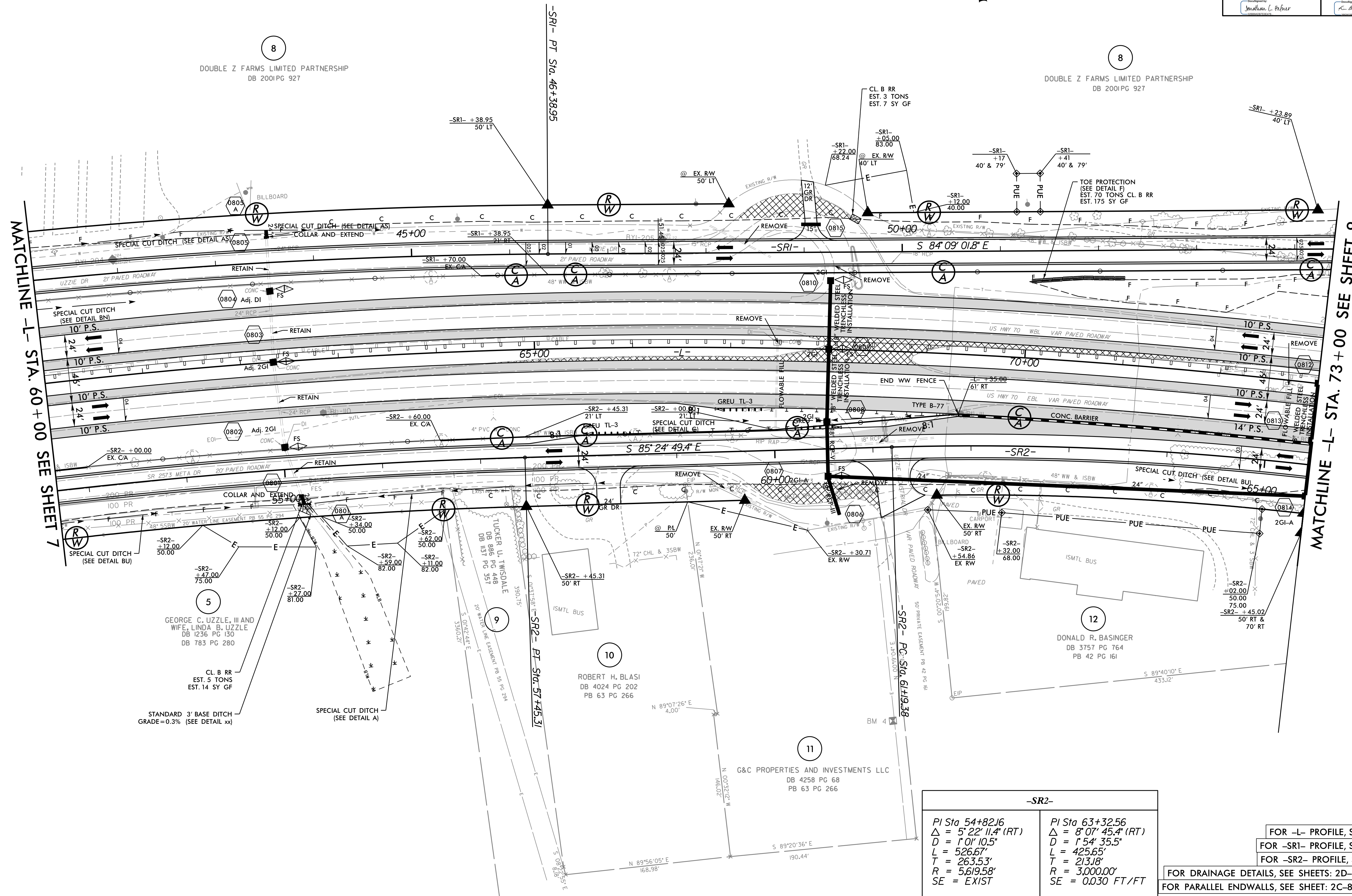
NAD 83/NA 2011

WETHERILL ENGINEERING
 1223 Jones Franklin Rd.
 Raleigh, N.C. 27606
 License No. F-0377
 Bus: 919 851 8077
 Fax: 919 851 8107

TRANSPORTATION PLANNING/DESIGN - BRIDGE/STRUCTURE DESIGN
 CIVIL/SITE DESIGN - GIS/GPS - CONSTRUCTION OBSERVATION

**DOCUMENT NOT CONSIDERED FINAL
 UNLESS ALL SIGNATURES COMPLETED**

PROJECT REFERENCE NO. W-5600	SHEET NO. 8
ROADWAY DESIGN ENGINEER 18:25 PST 12/15/2020	HYDRAULICS ENGINEER 16:23 PST 12/15/2020



MATCHLINE -L- STA. 60+00 SEE SHEET 7

MATCHLINE -L- STA. 73+00 SEE SHEET 9

-SR2-	-SR2-
$PI\ Sta\ 54+82.16$ $\Delta = 5' 22' 11.4'' (RT)$ $D = 1' 01' 10.5''$ $L = 526.67'$ $T = 263.53'$ $R = 5,619.58'$ $SE = EXIST$	$PI\ Sta\ 63+32.56$ $\Delta = 8' 07' 45.4'' (RT)$ $D = 1' 54' 35.5''$ $L = 425.65'$ $T = 213.8'$ $R = 3,000.00'$ $SE = 0.030\ FT/FT$

FOR -L- PROFILE, SEE SHEET: 29
 FOR -SRI- PROFILE, SEE SHEET: 48
 FOR -SR2- PROFILE, SEE SHEET: 51
 FOR DRAINAGE DETAILS, SEE SHEETS: 2D-1 THRU 2D-3
 FOR PARALLEL ENDWALLS, SEE SHEET: 2C-8 THRU 2C-11

REVISIONS

12/14/2020
JLW
12/15/2020
JLW
12/15/2020
JLW