

8/17/99

POPLAR CREEK DEVELOPMENT CO
DB 1360 PG 541
DB 4795 PG 395

DAYCO HOLDINGS LLC
DB 5247 PG 590
PB 78 PG 55

POPLAR CREEK DEVELOPMENT CO
DB 1360 PG 541
DB 4795 PG 395

DOUBLE Z FARMS LIMITED PARTNERSHIP
DB 2001PG 927

GEORGE C. UZZLE, III AND
WIFE, LINDA B. UZZLE
DB 1236 PG 130
DB 783 PG 280

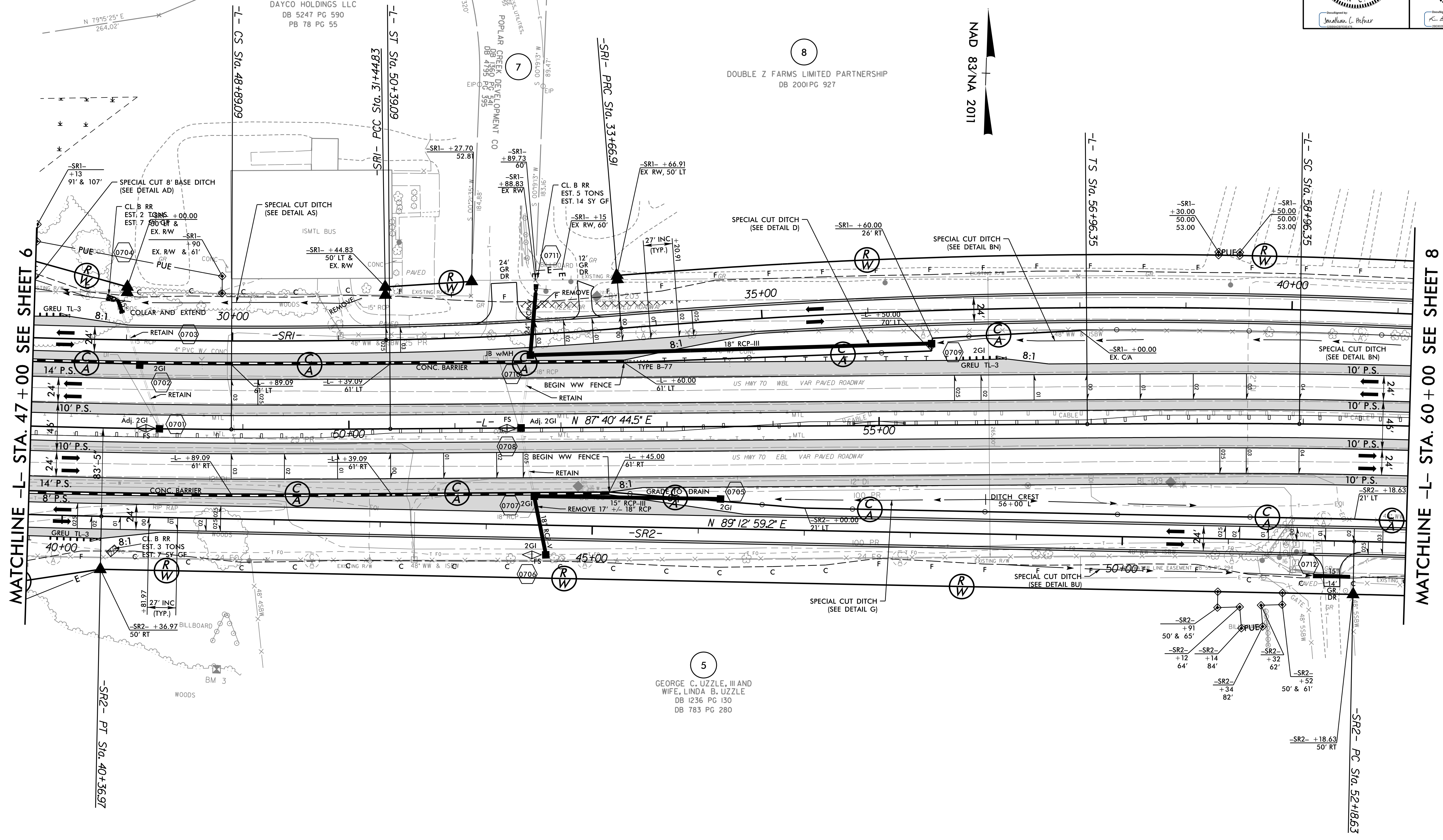
-SRI-		
PI Sta 28+64.98 $\Delta = 4' 26' 45.0''$ (LT) $D = 0' 47' 38.2''$ $L = 559.97'$ $T = 280.12'$ $R = 7,216.58'$ $SE = 0.025$ FT/FT	PI Sta 32+55.91 $\Delta = 3' 44' 32.7''$ (LT) $D = 1' 41' 06.6''$ $L = 222.08'$ $T = 111.08'$ $R = 3,400.00'$ $SE = 0.030$ FT/FT	PI Sta 40+05.45 $\Delta = 12' 28' 50.9''$ (RT) $D = 0' 58' 52.2''$ $L = 1,272.04'$ $T = 638.55'$ $R = 5,839.58'$ $SE = 0.025$ FT/FT

WETHERILL ENGINEERING
1223 Jones Franklin Rd.
Raleigh, N.C. 27606
License No. F-0377
Bus: 919 851 8077
Fax: 919 851 8107

TRANSPORTATION PLANNING/DESIGN - BRIDGE/STRUCTURE DESIGN
CIVIL/SITE DESIGN - GIS/GPS - CONSTRUCTION OBSERVATION

**DOCUMENT NOT CONSIDERED FINAL
UNLESS ALL SIGNATURES COMPLETED**

PROJECT REFERENCE NO.	SHEET NO.
W-5600	7
RW SHEET NO.	
ROADWAY DESIGN ENGINEER 12/15/2010 18:25 PST	HYDRAULICS ENGINEER 12/15/2010 18:46:23 PST



REVISIONS

MATCHLINE -L- STA. 47 +00 SEE SHEET 6

MATCHLINE -L- STA. 60 +00 SEE SHEET 8

-L-			-SR2-		
PI Sta 41+91.81 $\Delta = 10' 58' 45.2''$ (LT) $D = 0' 47' 05.5''$ $L = 1,398.85'$ $T = 701.57'$ $R = 7,300.00'$ $SE = 0.030$ FT/FT	PIs Sta 49+39.09 $\Delta s = 0' 35' 19.2''$ $Ls = 150.00'$ $LT = 100.00'$ $ST = 50.00'$	PIs Sta 58+29.68 $\Delta s = 1' 00' 00.0''$ $Ls = 200.00'$ $LT = 133.34'$ $ST = 66.67'$	PI Sta 79+15.92 $\Delta = 38' 50' 00.0''$ (RT) $D = 1' 00' 00.0''$ $L = 3,883.33'$ $T = 2,019.58'$ $R = 5,729.58'$ $SE = 0.040$ FT/FT	PI Sta 32+04.43 $\Delta = 12' 58' 36.4''$ (LT) $D = 0' 46' 33.6''$ $L = 1,672.25'$ $T = 839.72'$ $R = 7,383.42'$ $SE = 0.025$ FT/FT	PI Sta 54+82.16 $\Delta = 5' 22' 11.4''$ (RT) $D = 1' 01' 10.5''$ $L = 526.67'$ $T = 263.53'$ $R = 5,619.58'$ $SE = EXIST$

FOR -L- PROFILE, SEE SHEET: 28
 FOR -SRI- PROFILE, SEE SHEET: 47 & 48
 FOR -SR2- PROFILE, SEE SHEET: 50
 FOR DRAINAGE DETAILS, SEE SHEETS: 2D-1 THRU 2D-3
 FOR PARALLEL ENDWALLS, SEE SHEET: 2C-8 THRU 2C-11

12/14/2010 05:56:00_r.dwg_psh_07.dgn