

8/17/99

-L-		-SRI-			
PIs Sta 34+04.33	PI Sta 41+91.81	PI Sta 13+59.92	PI Sta 20+21.04	PI Sta 24+55.57	PI Sta 28+64.98
$\Delta = 0' 35' 19.0"$	$\Delta = 10' 58' 45.2" (LT)$	$\Delta = 15' 11' 14.3" (LT)$	$\Delta = 10' 15' 56.9" (RT)$	$\Delta = 14' 53' 57.6" (LT)$	$\Delta = 4' 26' 45.0" (LT)$
$\Theta s = 1' 30' 00.1"$	$D = 0' 47' 05.5"$	$D = 2' 07' 20.0"$	$D = 1' 41' 06.6"$	$D = 5' 43' 46.5"$	$D = 0' 47' 38.2"$
$Ls = 150.00'$	$L = 1,398.85'$	$L = 715.63'$	$L = 609.19'$	$L = 260.04'$	$L = 559.97'$
$LT = 85.92'$	$T = 701.57'$	$T = 359.92'$	$T = 305.41'$	$T = 130.76'$	$T = 280.12'$
$ST = 64.10'$	$R = 7,300.00'$	$R = 2,699.79'$	$R = 3,400.00'$	$R = 1,000.00'$	$R = 7,216.58'$
$SE = 0.04 FT/FT$	$SE = 0.03 FT/FT$	$SE = 0.04 FT/FT$	$SE = 0.03 FT/FT$	$SE = 0.04 FT/FT$	$SE = 0.025 FT/FT$

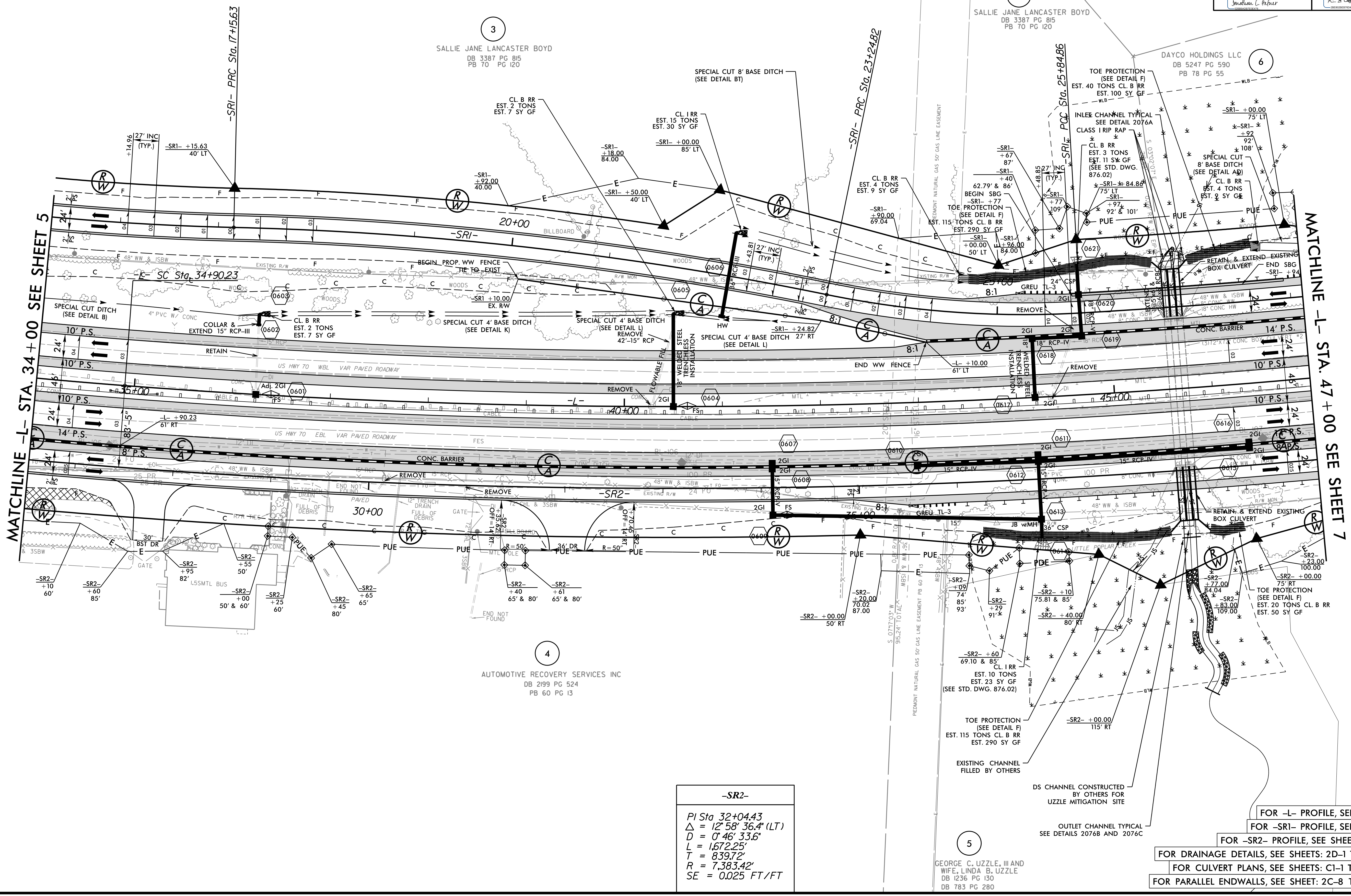
WETHERILL ENGINEERING
 1223 Jones Franklin Rd.
 Raleigh, N.C. 27606
 License No. F-0377
 Bus: 919 851 8077
 Fax: 919 851 8107

TRANSPORTATION PLANNING/DESIGN - BRIDGE/STRUCTURE DESIGN
 CIVIL/SITE DESIGN - GIS/GPS - CONSTRUCTION OBSERVATION

**DOCUMENT NOT CONSIDERED FINAL
 UNLESS ALL SIGNATURES COMPLETED**

PROJECT REFERENCE NO. W-5600	SHEET NO. 6
RW SHEET NO.	HYDRAULICS
ENGINEER: 12/15/2020 1:25 PST	ENGINEER: 12/15/2020 1:46:23 PST
SEAL 35016	SEAL 31977

NAD 83/NA 2011



-SR2-
PI Sta 32+04.43
$\Delta = 12' 58' 36.4" (LT)$
$D = 0' 46' 33.6"$
$L = 1,672.25'$
$T = 839.72'$
$R = 7,383.42'$
$SE = 0.025 FT/FT$

FOR -L- PROFILE, SEE SHEET: 28
 FOR -SRI- PROFILE, SEE SHEET: 47
 FOR -SR2- PROFILE, SEE SHEET: 49 & 50
 FOR DRAINAGE DETAILS, SEE SHEETS: 2D-1 THRU 2D-3
 FOR CULVERT PLANS, SEE SHEETS: C1-1 THRU C1-10
 FOR PARALLEL ENDWALLS, SEE SHEET: 2C-8 THRU 2C-11

REVISIONS

12/14/2020 C:\p600_rdu_psh_06.dgn