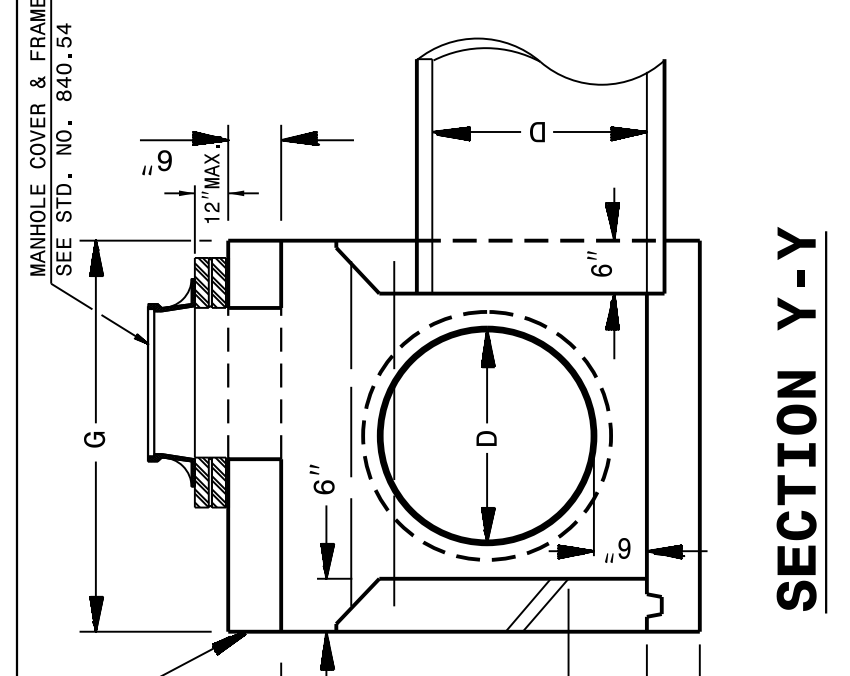
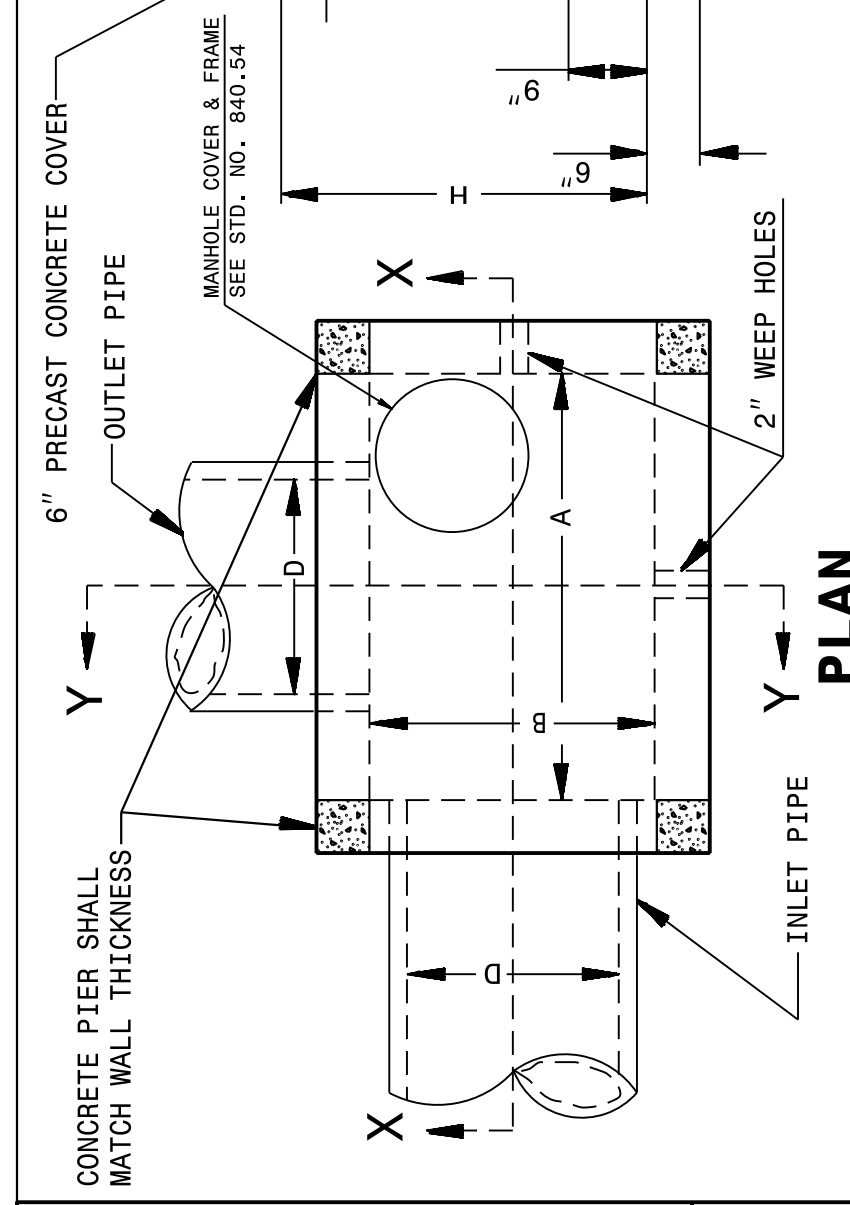


24-APR-2019 07:24  
 S:\Contracts\Special Details\jhover-ton\840d04 3 or 4 side OTCB.dgn  
 jhover-ton AT CSD-292595

5/14/99

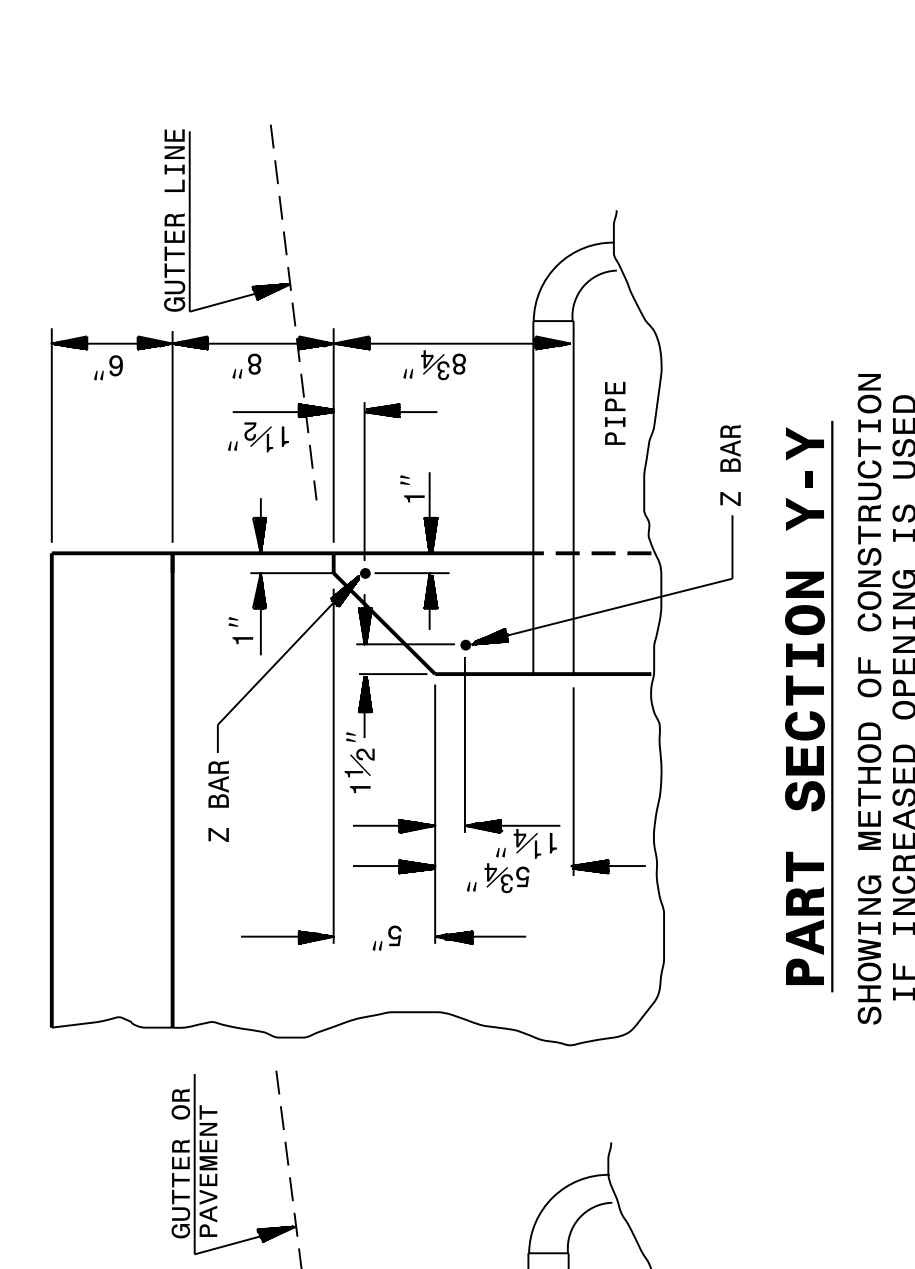
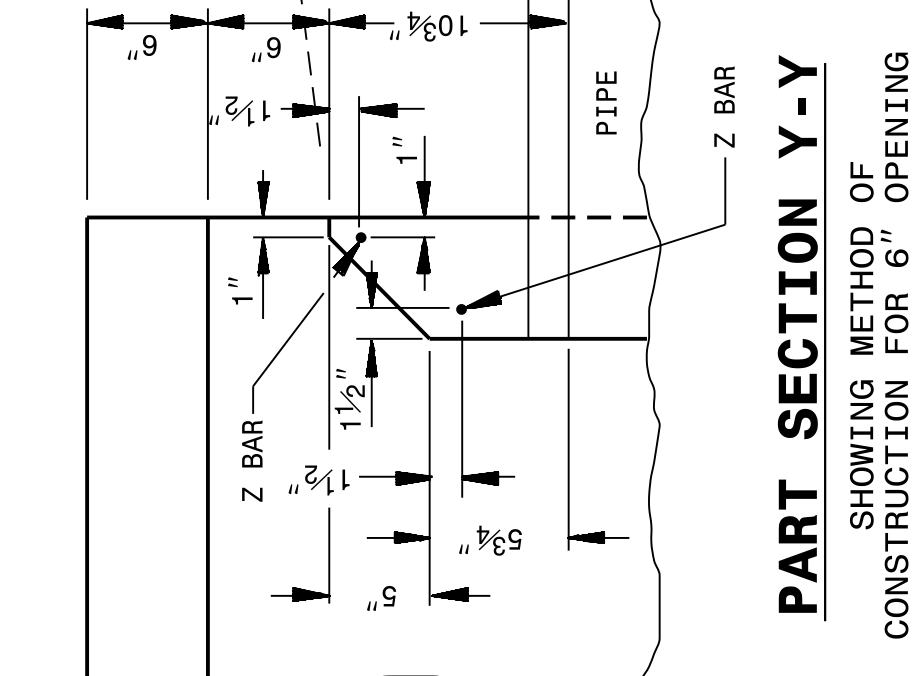
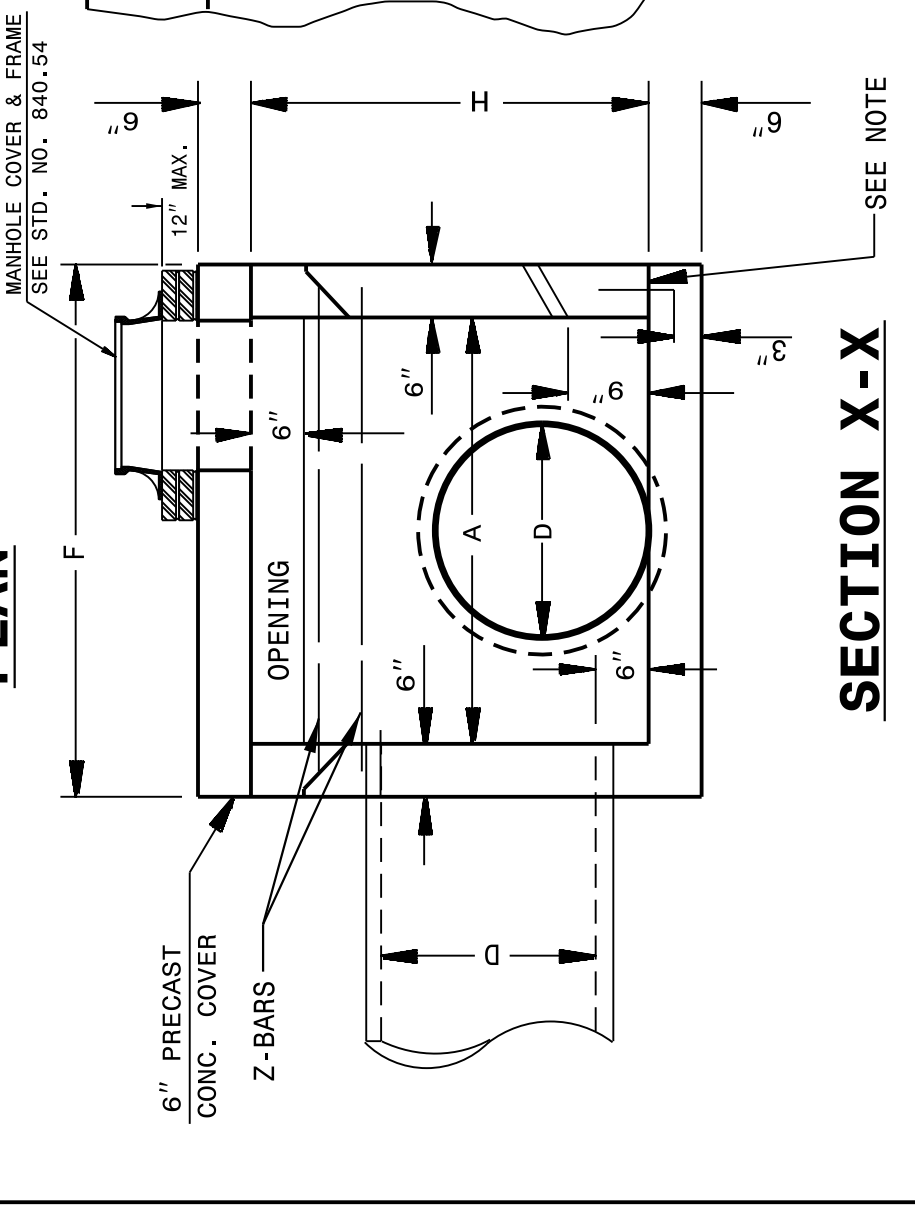
STATE OF  
 NORTH CAROLINA  
 DEPT. OF TRANSPORTATION  
 DIVISION OF HIGHWAYS  
 RALEIGH, N.C.



**GENERAL NOTES:**  
 ALL CATCH BASINS OVER 3'-6" IN DEPTH TO BE PROVIDED WITH STEPS 12" ON CENTERS. STEPS SHALL BE IN ACCORDANCE WITH STD. 840.66. ALL EXPOSED CORNERS TO BE CHAMFERED 1". CLASS 'B' CONCRETE TO BE USED THROUGHOUT.  
 2" PIPE WEEPHOLES TO BE PLACED AS DIRECTED BY ENGINEER.  
 THE 6" OPENING SHOWN MAY BE INCREASED TO 8" MAXIMUM IF DEEMED TO BE NECESSARY BY THE ENGINEER.  
 OPTIONAL CONSTRUCTION - MONOLITHIC POUR, 2" KEYWAY, OR #5 BAR DOWELS FORMS ARE TO BE USED FOR THE CONSTRUCTION OF THE BOTTOM SLAB.  
 IF REINFORCED CONCRETE PIPE IS SET IN BASE SLAB OF BOX, ADD TO BASE AS SHOWN ON STD. DWG. 840.00.  
 A STONE DRAIN CONSISTING OF 1 CUBIC FOOT OF NO. 78M STONE CONTAINED IN A BAG OF POROUS FABRIC SHALL BE PLACED AT EACH WEEP HOLE.  
 FOR 8" IN HEIGHT OR LESS USE 6" WALLS AND BOTTOM SLAB.  
 OVER 8" IN HEIGHT USE 8" WALLS AND BOTTOM SLAB. QUANTITIES TO BE ADJUSTED ACCORDINGLY.  
 DIMENSIONS MAY BE ADJUSTED AS DIRECTED BY THE ENGINEER.

STATE OF  
 NORTH CAROLINA  
 DEPT. OF TRANSPORTATION  
 RALEIGH, N.C.

ENGLISH DETAIL DRAWING FOR  
**CONCRETE CATCH BASIN  
 (3 OR 4 SIDE OPEN THROAT)  
 (MANHOLE OPTIONAL)**



**PART SECTION Y-Y**  
 SHOWING METHOD OF CONSTRUCTION  
 IF INCREASED OPENING IS USED

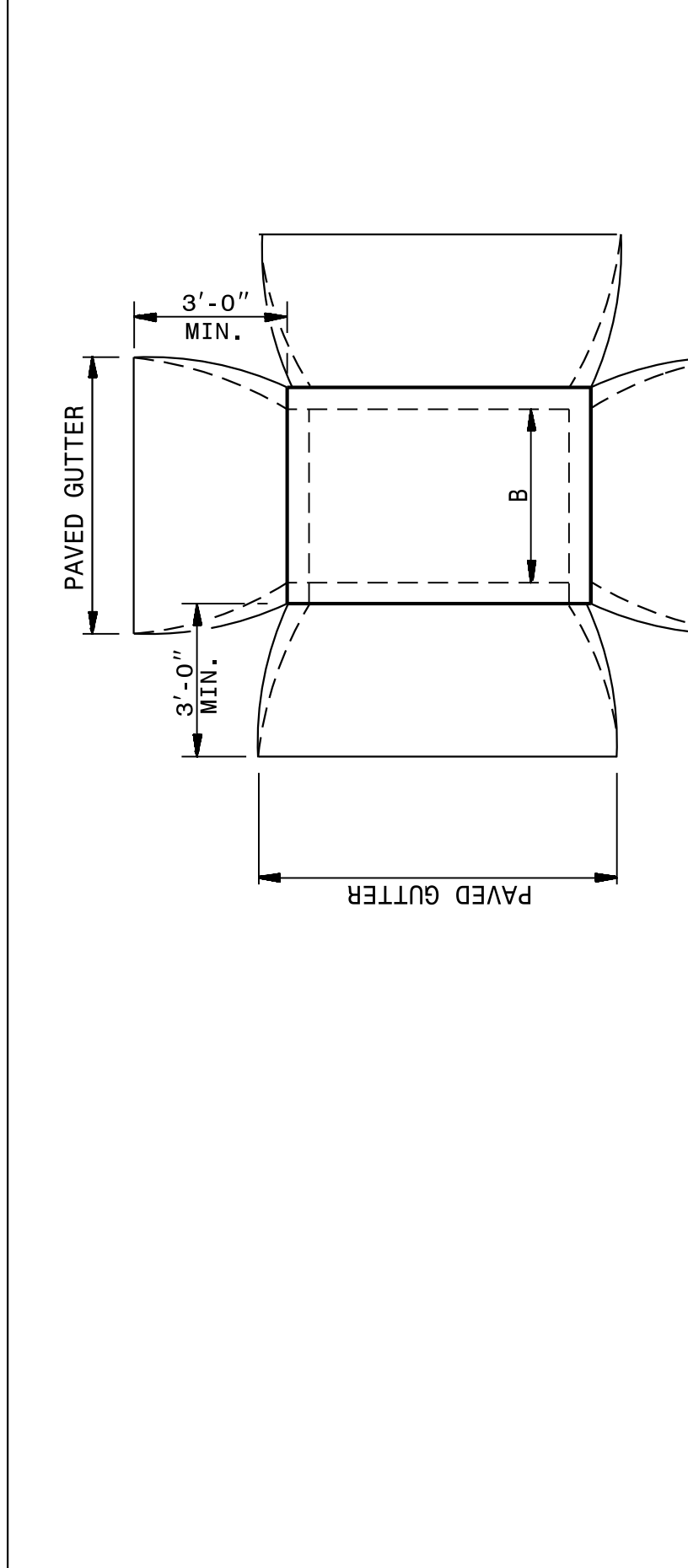
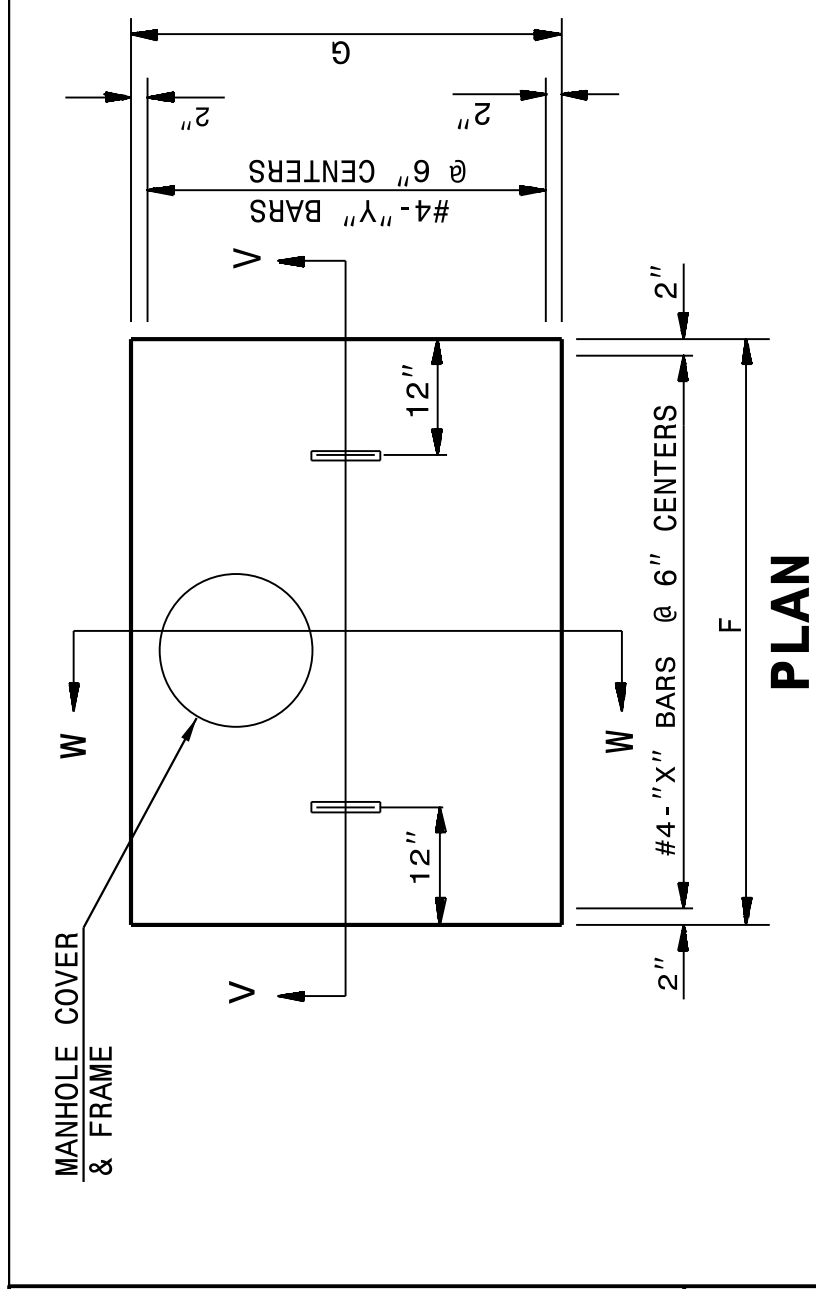
**PART SECTION Y-Y**  
 SHOWING METHOD OF  
 CONSTRUCTION FOR 6" OPENING

PIPE DIM'S	MIN. DIMENSIONS AND QUANTITIES FOR CONCRETE CATCH BASIN (BASED ON MIN. HEIGHT, H)			TOTAL QUANTITIES			DEDUCTION ONE PIPE THROUGH OPENING										
	BOX & SLABS	BOX & SLABS	BOX & SLABS	BOX & SLABS	BOX & SLABS	BOX & SLABS											
12"	3'-6"	2'-3"	1'-10"	4	3'-0"	6	4'-3"	4'-6"	3'-3"	0.181	0.271	0.250	27	1.046	0.015	0.032	0.046
15"	3'-6"	2'-3"	2'-1"	4	3'-0"	6	4'-3"	4'-6"	3'-3"	0.181	0.271	0.250	27	1.108	0.023	0.036	0.046
18"	4'-0"	2'-8"	2'-4"	5	3'-5"	7	4'-9"	5'-0"	3'-8"	0.226	0.340	0.284	35	1.379	0.033	0.049	0.053
24"	4'-0"	2'-8"	2'-10"	5	3'-5"	7	4'-9"	5'-0"	3'-8"	0.226	0.340	0.284	35	1.521	0.059	0.085	0.083
30"	4'-0"	3'-6"	3'-4"	5	4'-3"	9	4'-9"	5'-0"	4'-6"	0.278	0.417	0.315	43	1.916	0.092	0.127	0.053
36"	4'-0"	4'-6"	4'-4"	5	4'-9"	12	5'-3"	6'-0"	5'-6"	0.340	0.510	0.352	51	2.390	0.132	0.178	0.069
42"	5'-0"	4'-6"	4'-4"	5	5'-3"	12	5'-9"	6'-0"	5'-6"	0.407	0.611	0.389	64	2.914	0.180	0.243	0.066
48"	5'-0"	5'-0"	4'-10"	5	5'-9"	13	5'-9"	6'-0"	6'-0"	0.444	0.666	0.407	68	3.298	0.235	0.317	0.066

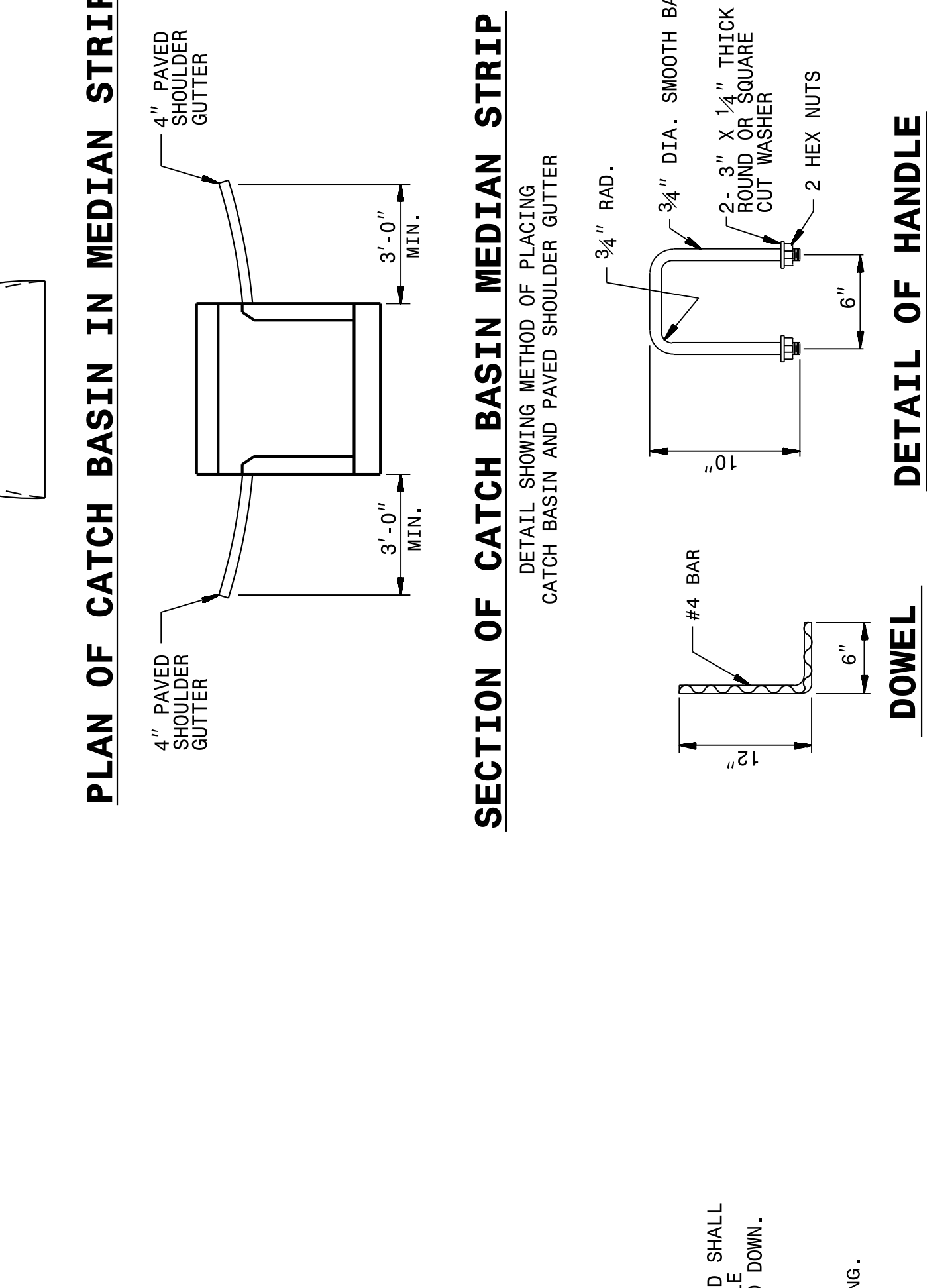
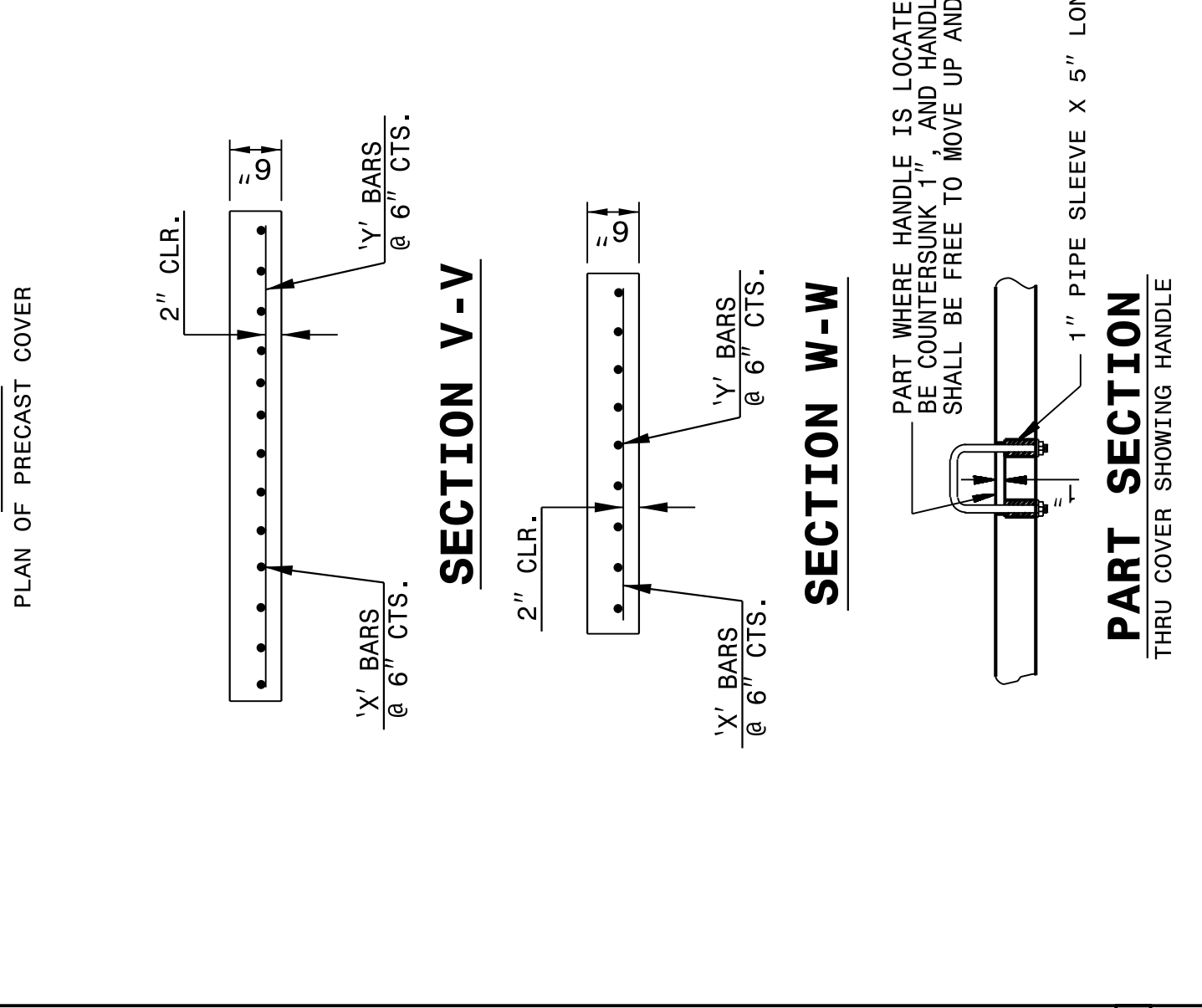
SHEET 1 OF 2  
**840D04**

SHEET 1 OF 2  
**840D04**

STATE OF  
 NORTH CAROLINA  
 DEPT. OF TRANSPORTATION  
 DIVISION OF HIGHWAYS  
 RALEIGH, N.C.



ENGLISH DETAIL DRAWING FOR  
**CONCRETE CATCH BASIN  
 (3 OR 4 SIDE OPEN THROAT)  
 (MANHOLE OPTIONAL)**



**SECTION OF CATCH BASIN MEDIAN STRIP**  
 DETAIL SHOWING METHOD OF PLACING  
 CATCH BASIN AND PAVED SHOULDER GUTTER

**PLAN OF CATCH BASIN IN MEDIAN STRIP**

STATE OF  
 NORTH CAROLINA  
 DEPT. OF TRANSPORTATION  
 RALEIGH, N.C.

SHEET 2 OF 2  
**840D04**

STATE OF  
 NORTH CAROLINA  
 DEPT. OF TRANSPORTATION  
 RALEIGH, N.C.

SHEET 2 OF 2  
**840D04**

ORIGINAL BY: \_\_\_\_\_ DATE: \_\_\_\_\_  
 MODIFIED BY: rnbritt DATE: 07-03-2014  
 CHECKED BY: \_\_\_\_\_ DATE: \_\_\_\_\_  
 FILE SPEC.: details/rnbritt/english/hydro/840d04.dgn

**CONTRACT STANDARDS  
 AND DEVELOPMENT UNIT**  
 Office 919-707-6950 FAX 919-250-4119

**SEE PLATE FOR TITLE**

12/15/2020 | 11:58:18 EST  
 PROFESSIONAL SEAL 022966  
 ENGINEER  
 S. HOWARD  
 DOCUMENT NOT CONSIDERED FINAL  
 UNLESS ALL SIGNATURES COMPLETED