


6/2/99



1223 Jones Franklin Rd.
Raleigh, N.C. 27606
License No. F-0377
Bus: 919 851 8077
Fax: 919 851 8107

TRANSPORTATION PLANNING/DESIGN - BRIDGE/STRUCTURE DESIGN
CIVIL/SITE DESIGN - GIS/GPS - CONSTRUCTION OBSERVATION

PROJECT REFERENCE NO.
W-5600

ROADWAY DESIGN ENGINEER
3/9/2021

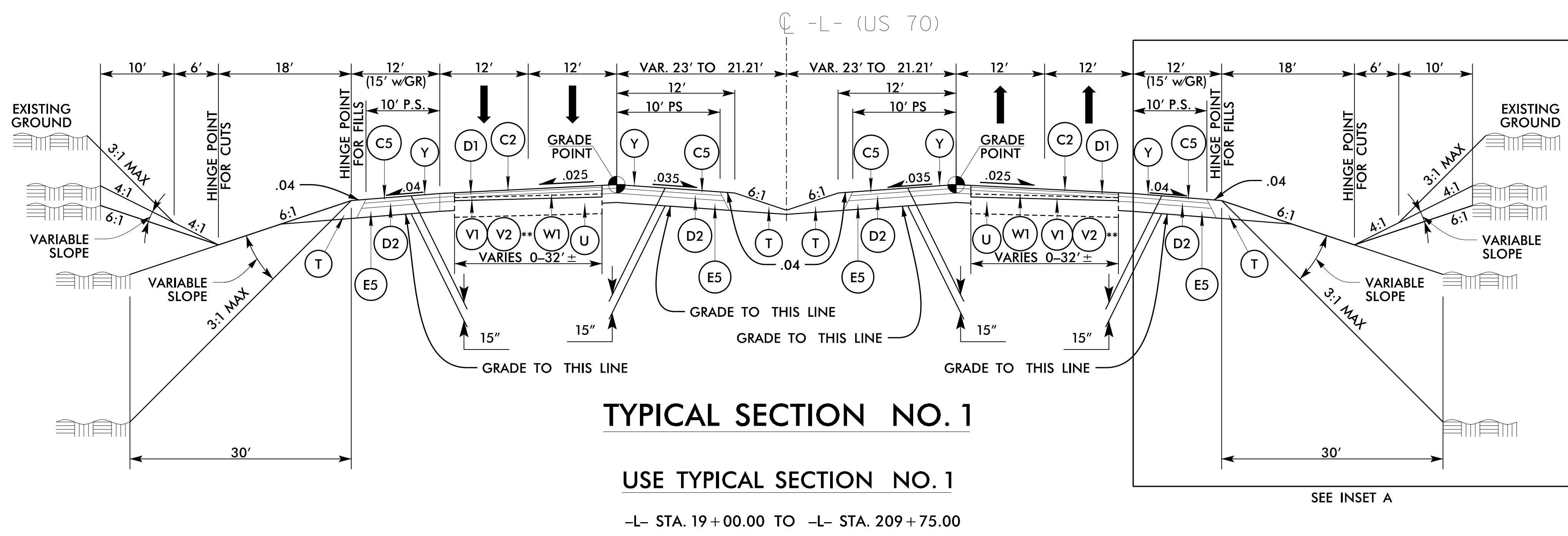
SHEET NO.
2A-2

PAVEMENT DESIGN ENGINEER
3/9/2021

SEAL
35016
J. D. PATRICK, P.E.
NORTH CAROLINA PROFESSIONAL ENGINEER

SEAL
44590
ANDREW D. URRY
NORTH CAROLINA PROFESSIONAL ENGINEER

DOCUMENT NOT CONSIDERED FINAL
UNLESS ALL SIGNATURES COMPLETED

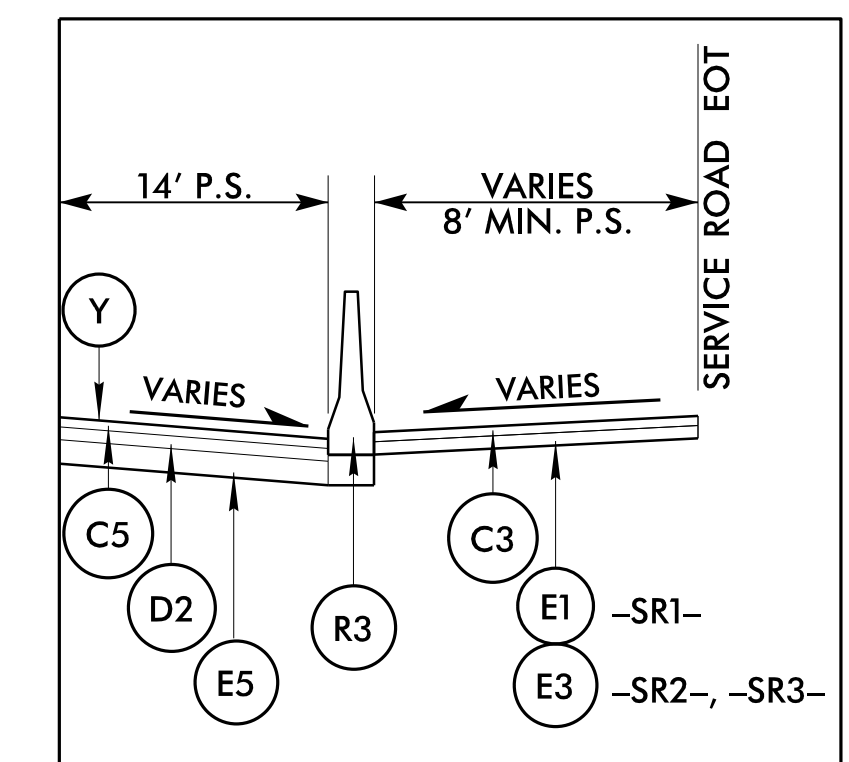


TYPICAL SECTION NO. 1

USE TYPICAL SECTION NO. 1

-L- STA. 19+00.00 TO -L- STA. 209+75.00

** USE (V2) IN THE FOLLOWING LOCATIONS:
-L- 19+00.00 TO 22+00.00 LT & RT

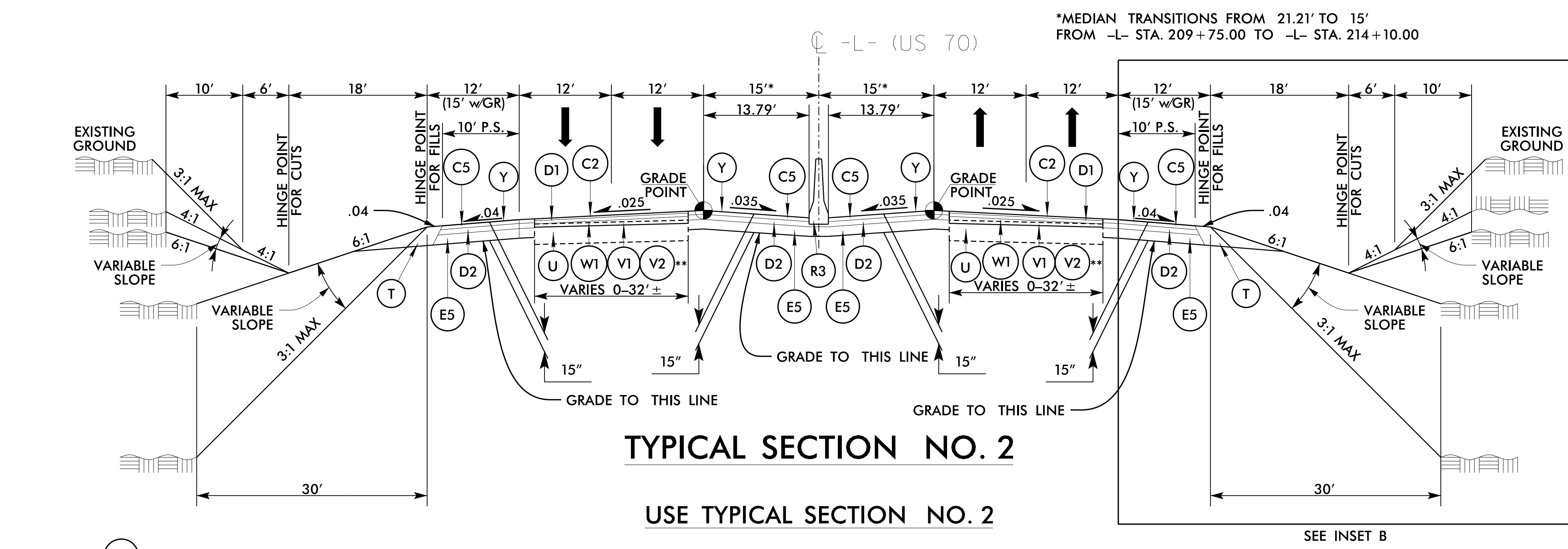


INSET A

USE INSET A IN CONJUNCTION
WITH TYPICAL SECTION NO. 1

-L- STA. 31+10.00 TO -L- STA. 52+45.00 RT
-L- STA. 43+10.00 TO -L- STA. 52+60.00 LT
-L- STA. 69+35.00 TO -L- STA. 99+40.00 RT

PAVEMENT SCHEDULE	
FINAL PAVEMENT DESIGN	
C1	1 1/2" S9.5B
C2	1 1/2" S9.5D
C3	3" S9.5B
C4	3" S9.5C
C5	3" S9.5D
C6	VAR. S9.5B
C7	VAR. S9.5D
D1	2 1/2" I19.0C
D2	4" I19.0C
D3	VAR. I19.0C
E1	4" B25.0C
E2	4 1/2" B25.0C
E3	5 1/2" B25.0C
E4	7" B25.0C
E5	8" B25.0C
E6	VAR. B25.0C
J1	8" ABC
R1	2'-6" C & G
R2	5" MCI
R3	DOUBLE FACE CONC. BARRIER
S	4" SIDEWALK
T	EARTH MATERIAL
U	EXIST. PAVEMENT
V1	2 1/2" MILLING
V2	2 1/2" TO 4" VAR. MILLING
W1	WEDGING
W2	WEDGING
Y	MILLED RUMBLE STRIPS

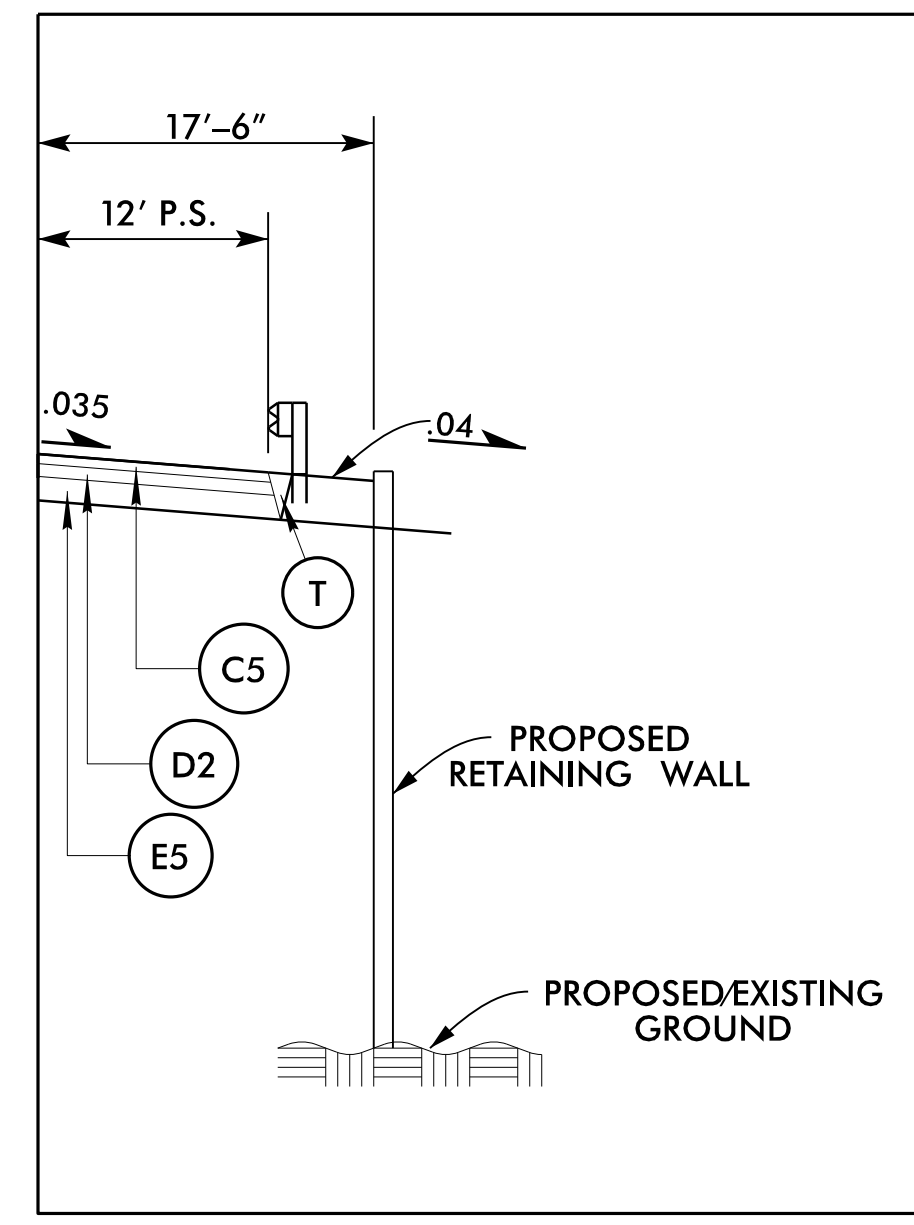


TYPICAL SECTION NO. 2

USE TYPICAL SECTION NO. 2

-L- STA. 209+75.00 TO -L- STA. 216+76.59 LT. (BEGIN BRIDGE)
-L- STA. 217+73.79 (END BRIDGE) TO -L- STA. 281+85.00 LT.
-L- STA. 209+75.00 TO -L- STA. 216+89.65 RT. (BEGIN BRIDGE)
-L- STA. 217+87.45 (END BRIDGE) TO -L- STA. 281+85.00 RT.

** USE (V2) IN THE FOLLOWING LOCATIONS:
-L- 244+50.00 TO 281+85.00 LT
-L- 253+50.00 TO 255+50.00 RT
-L- 274+50.00 TO 281+85.00 RT



INSET B

USE INSET B IN CONJUNCTION
WITH TYPICAL SECTION NO. 2

-L- STA. 212+50.00 TO -L- STA. 217+15.62 RT.
-L- STA. 210+00.00 TO -L- STA. 216+65.38 LT.
-L- STA. 217+99.81 TO -L- STA. 224+00.00 RT.
-L- STA. 217+47.60 TO -L- STA. 224+50.00 LT.

3/9/2021 11:56:00 AM rdy_psh_02A-02_tup.dgn