


6/22/99



1223 Jones Franklin Rd.
Raleigh, N.C. 27606
License No. F-0377
Bus: 919 851 8077
Fax: 919 851 8107

TRANSPORTATION PLANNING/DESIGN - BRIDGE/STRUCTURE DESIGN
CIVIL/SITE DESIGN - GIS/GPS - CONSTRUCTION OBSERVATION


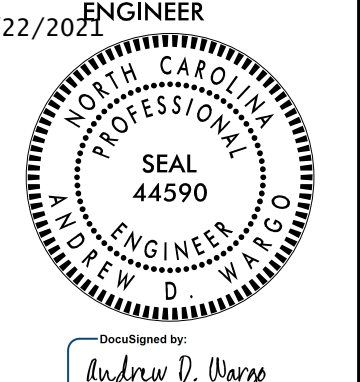
**DOCUMENT NOT CONSIDERED FINAL
UNLESS ALL SIGNATURES COMPLETED**

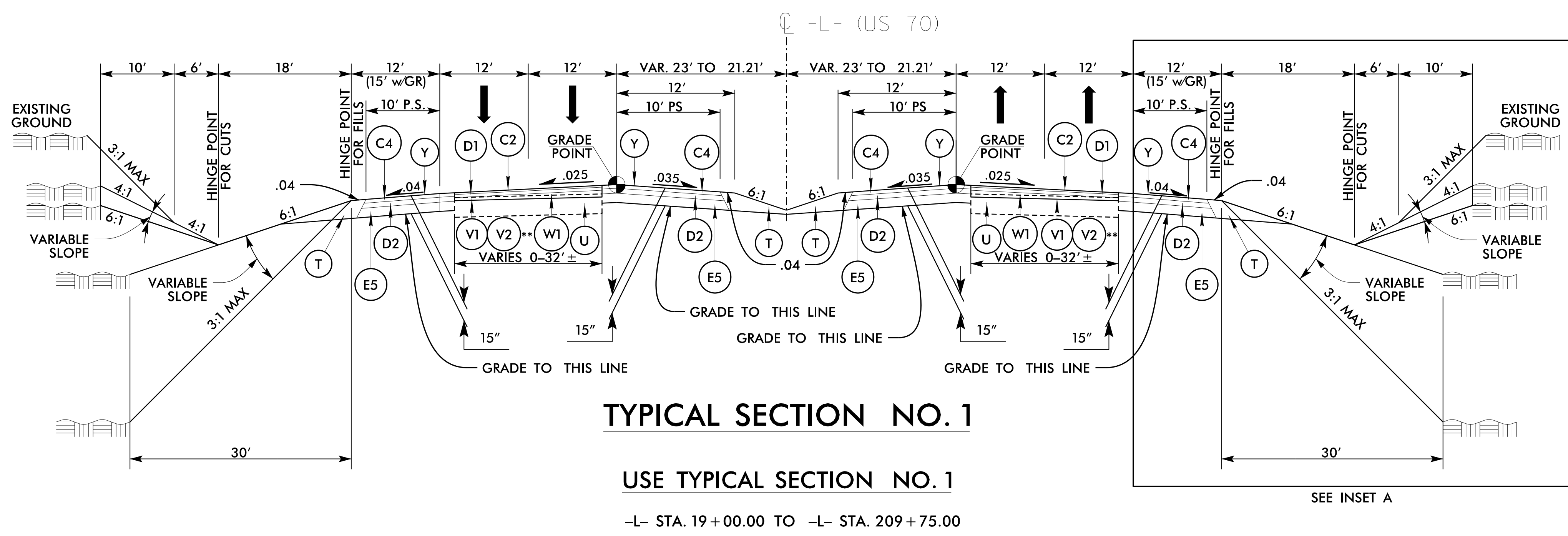
PROJECT REFERENCE NO.
W-5600

ROADWAY DESIGN
ENGINEER
2/22/2023

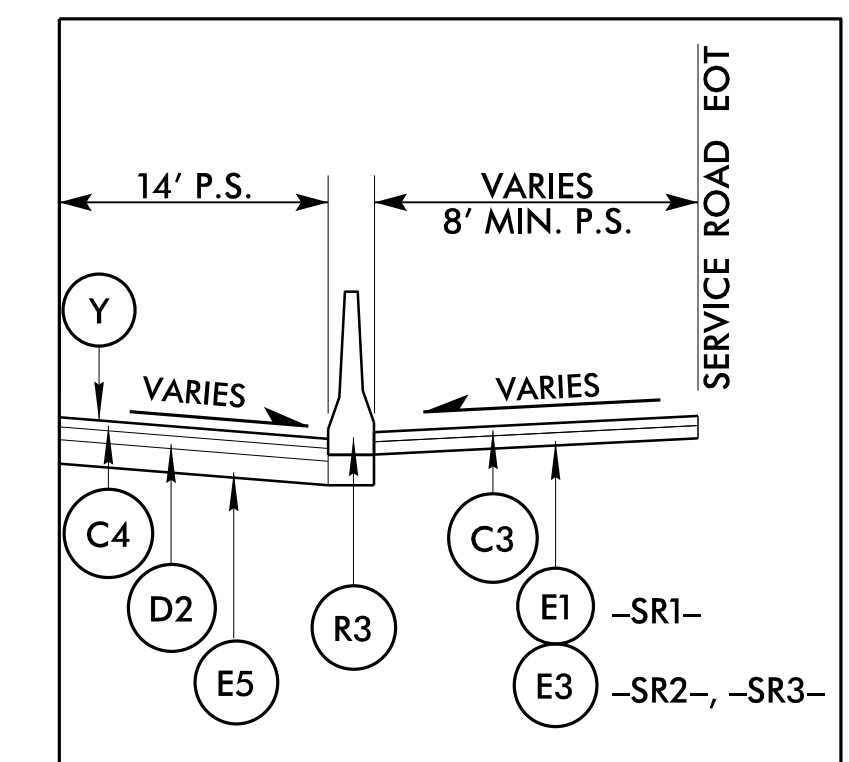
PAVEMENT DESIGN
ENGINEER
2/22/2023

SHEET NO.
2A-2



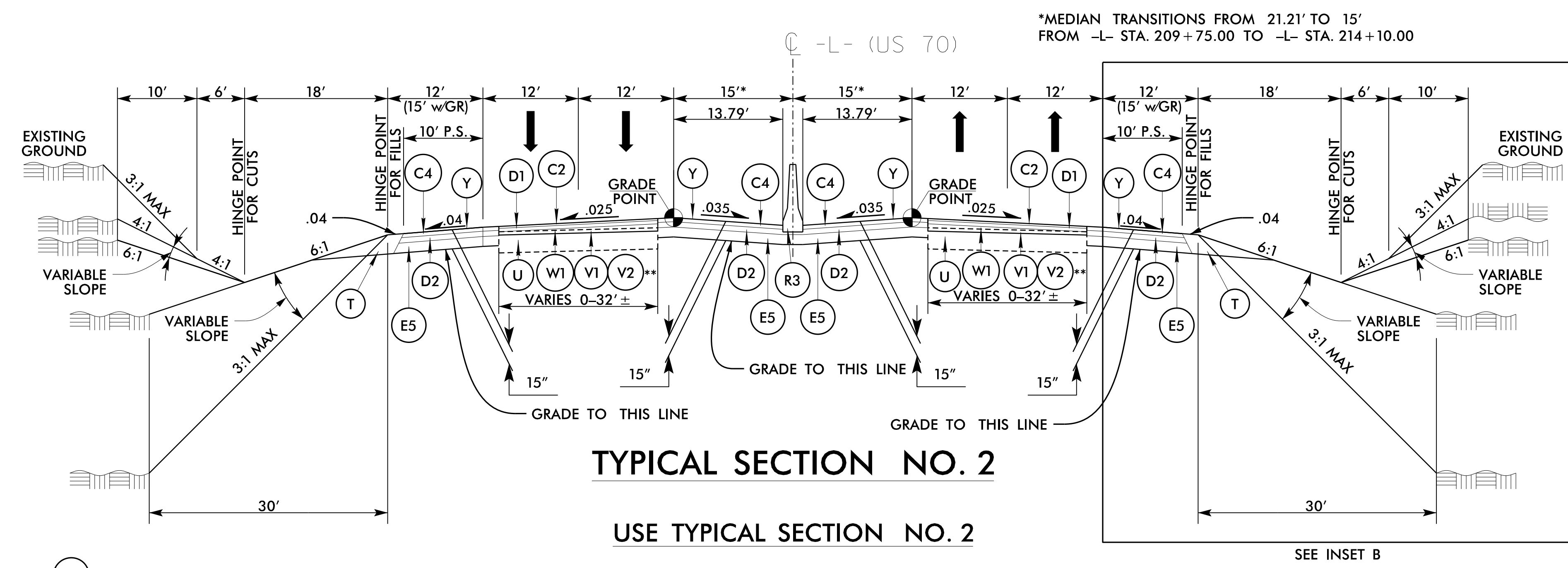
** USE (V2) IN THE FOLLOWING LOCATIONS:
-L- 19+00.00 TO 22+00.00 LT & RT



**USE INSET A IN CONJUNCTION
WITH TYPICAL SECTION NO. 1**

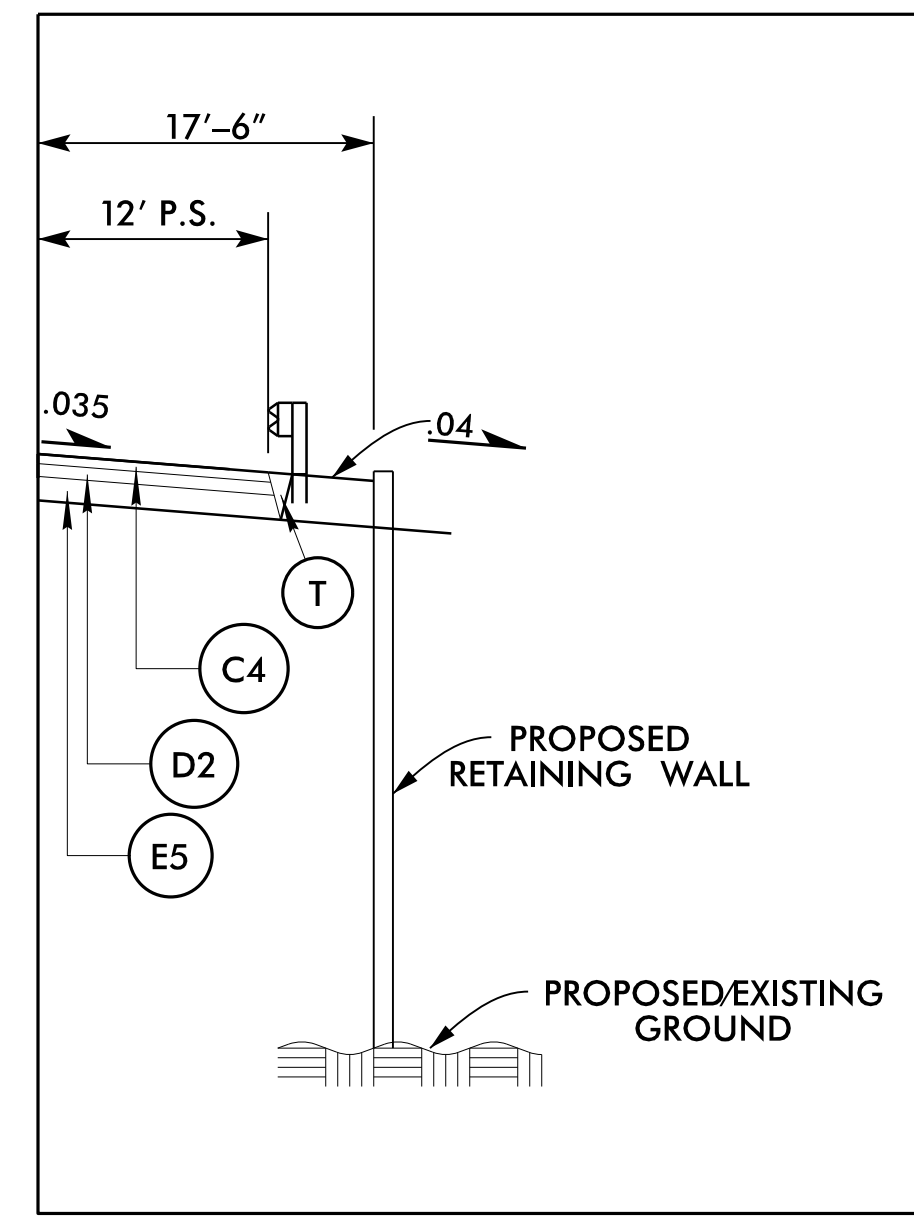
-L- STA. 31+10.00 TO -L- STA. 52+45.00 RT
-L- STA. 43+10.00 TO -L- STA. 52+60.00 LT
-L- STA. 69+35.00 TO -L- STA. 99+40.00 RT

PAVEMENT SCHEDULE	
FINAL PAVEMENT DESIGN	FINAL PAVEMENT DESIGN
C1	1½" S9.5B
C2	1½" S9.5D
C3	3" S9.5B
C4	3" S9.5D
C5	VAR. S9.5B
C6	VAR. S9.5D
D1	2½" I19.0C
D2	4" I19.0C
D3	VAR. I19.0C
E1	4" B25.0C
E2	4½" B25.0C
E3	5½" B25.0C
E4	7" B25.0C
E5	8" B25.0C
E6	VAR. B25.0C
J1	8" ABC
R1	2'-6" C & G
R2	5" MCI
R3	DOUBLE FACE CONC. BARRIER
S	4" SIDEWALK
T	EARTH MATERIAL
U	EXIST. PAVEMENT
V1	2½" MILLING
V2	2½" TO 4" VAR. MILLING
W1	WEDGING
W2	WEDGING
Y	MILLED RUMBLE STRIPS



** USE (V2) IN THE FOLLOWING LOCATIONS:
-L- 244+50.00 TO 281+85.00 LT
-L- 253+50.00 TO 255+50.00 RT
-L- 274+50.00 TO 281+85.00 RT

-L- STA. 209+75.00 TO -L- STA. 216+76.59 LT. (BEGIN BRIDGE)
-L- STA. 217+73.79 (END BRIDGE) TO -L- STA. 281+85.00 LT.
-L- STA. 209+75.00 TO -L- STA. 216+89.65 RT. (BEGIN BRIDGE)
-L- STA. 217+87.45 (END BRIDGE) TO -L- STA. 281+85.00 RT.



**USE INSET B IN CONJUNCTION
WITH TYPICAL SECTION NO. 2**

-L- STA. 212+50.00 TO -L- STA. 217+15.62 RT.
-L- STA. 210+00.00 TO -L- STA. 216+65.38 LT.
-L- STA. 217+99.81 TO -L- STA. 224+00.00 RT.
-L- STA. 217+47.60 TO -L- STA. 224+50.00 LT.

2/22/2023 11:58:11 AM c:\psh_02a-02_tup.dgn