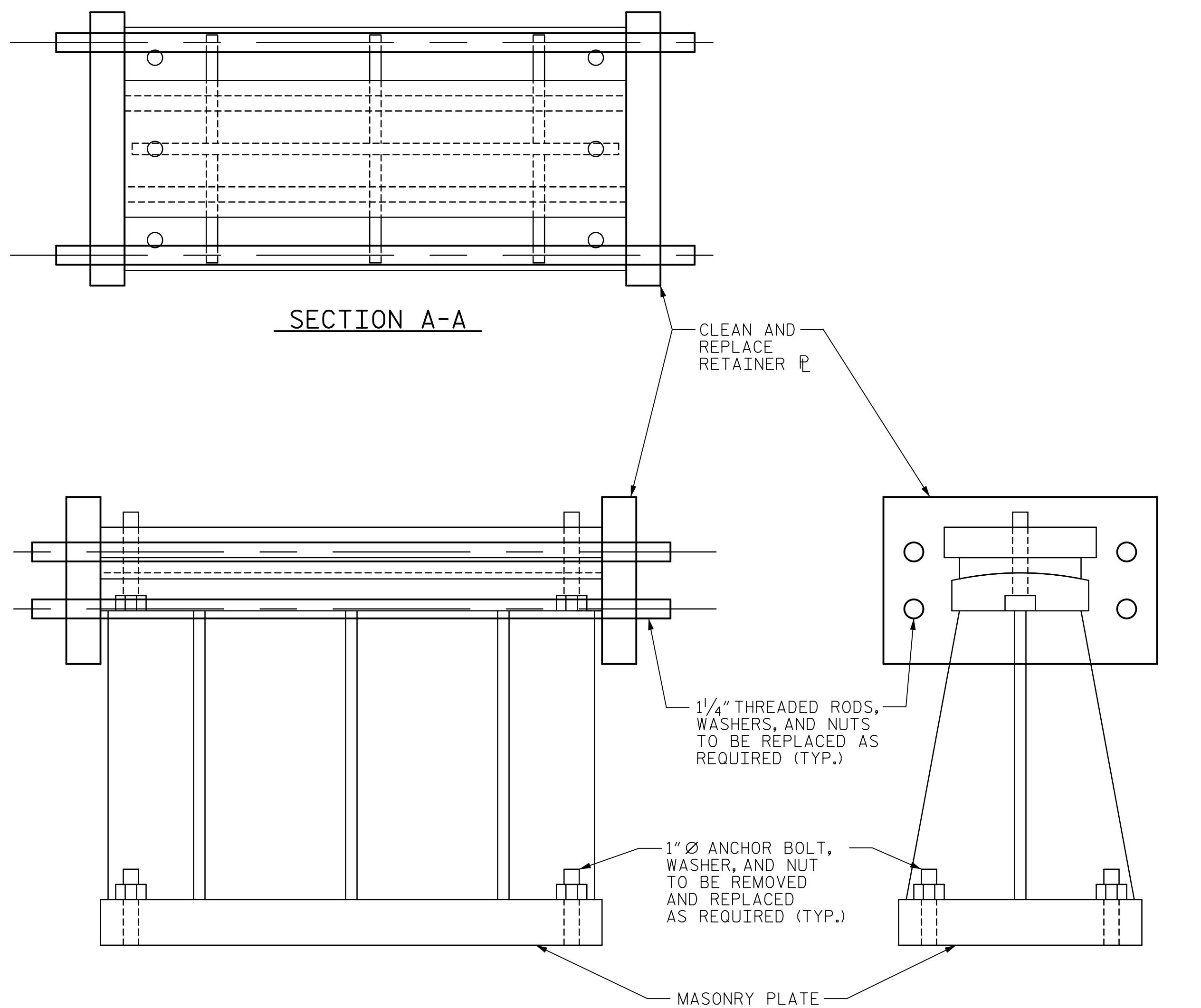


DATE: 2/27/2020
TIME: 4:05:05 PM



SIMPLE SPAN BEARING ELEVATION

SIMPLE SPAN BEARING END ELEVATION

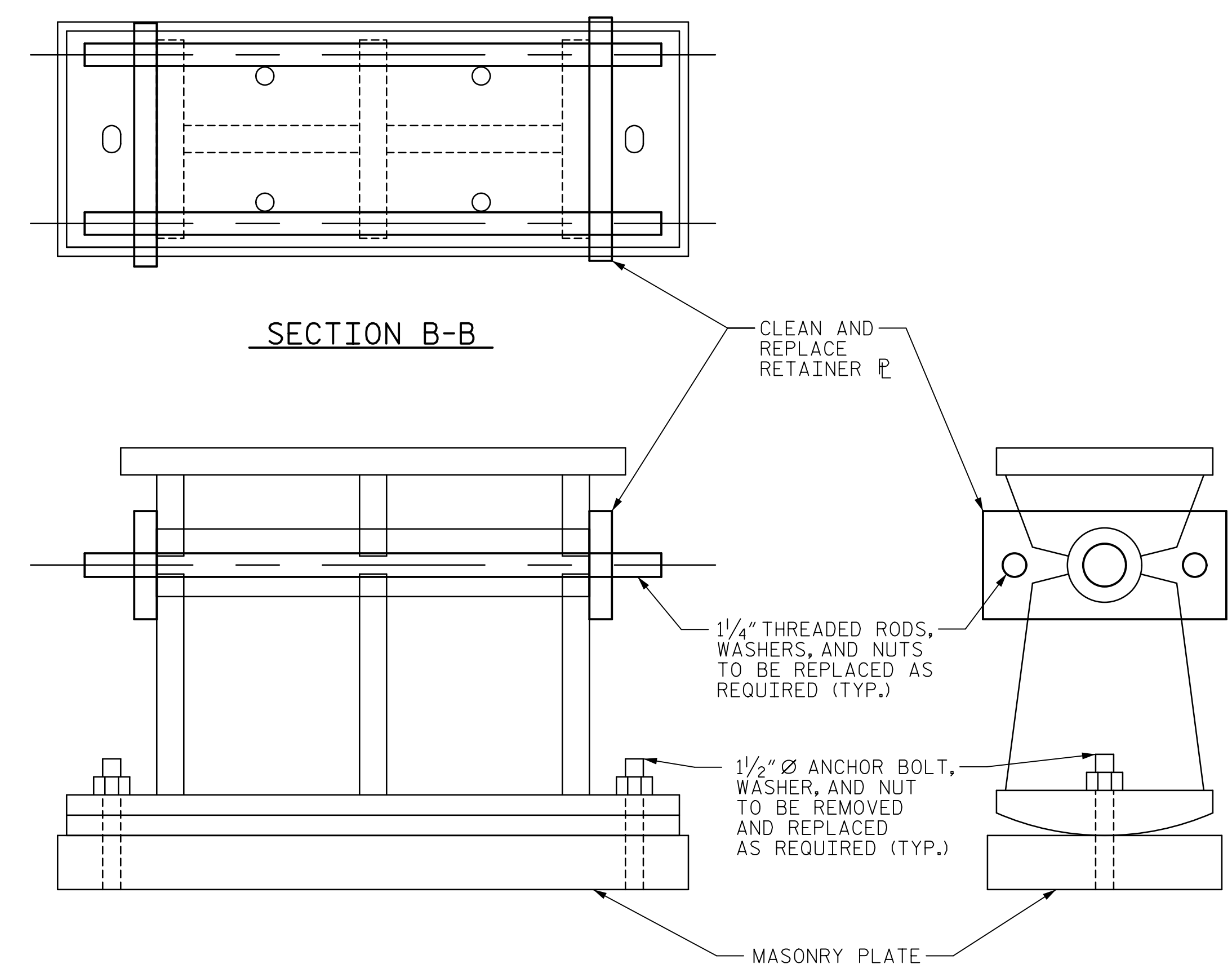
SPANS A OR E BEARING AT BENTS 1 OR 4

NOTES

ANCHOR BOLTS SHALL BE REPLACED IF MORE THAN 25% HEAD LOSS HAS OCCURRED AS DIRECTED BY THE ENGINEER. AT THE LOCATION OF EXISTING ANCHOR BOLTS DRILL OVERSIZE HOLES IN BEARING PLATES AND TAP BASE PLATE TO ACCEPT 1 1/4" Ø A325 H.S. BOLTS.

FOR BEARING REPAIRS, SEE SPECIAL PROVISIONS. BEARING REPAIRS ARE PAID FOR AS LUMP SUM.

AFTER REPAIRS, PAINT IN ACCORDANCE WITH THE SPECIAL PROVISIONS.



ROCKER BEARING ELEVATION

ROCKER BEARING END ELEVATION

SPANS B OR D BEARING AT BENTS 1 OR 4

PROJECT NO. 15BPR.20

HENDERSON COUNTY

STATION: 35+30.22 -L-

SHEET 2 OF 2

DRAWN BY : K. DONALD DATE : 01/19
 CHECKED BY : G. COLS DATE : 02/19
 DESIGNED BY : G. COLS DATE : 01/19
 DESIGN CHECKED BY : J. SLOAN DATE : 03/19

USER: MerchAssessord
 DSN: R:\Structures\04 Drawings\01\JT_15BPR.20_SML\BSC2.dgn



STATE OF NORTH CAROLINA
 DEPARTMENT OF TRANSPORTATION
 RALEIGH

REHABILITATION

BEARING REPAIRS

DOCUMENT NOT CONSIDERED FINAL UNLESS ALL SIGNATURES COMPLETED

REVISIONS						SHEET NO.
NO.	BY:	DATE:	NO.	BY:	DATE:	S-96
1			3			TOTAL SHEETS
2			4			129