

NOTES:

THE CONCRETE MEDIAN BARRIER IN EACH CONTINUOUS UNIT SHALL NOT BE CAST UNTIL ALL SLAB CONCRETE IN THAT UNIT HAS BEEN CAST AND HAS REACHED A MINIMUM COMPRESSIVE STRENGTH OF 3,000 PSI.

GROOVED CONTRACTION JOINTS, 1/2" IN DEPTH, SHALL BE TOOLED IN ALL EXPOSED FACES OF THE CONCRETE MEDIAN BARRIER AND IN ACCORDANCE WITH ARTICLE 825-10(B) OF THE STANDARD SPECIFICATIONS, THE CONTRACTION JOINT SHALL BE LOCATED AT EACH THIRD POINT BETWEEN CONCRETE MEDIAN BARRIER EXPANSION JOINTS. ONLY ONE CONTRACTION JOINT IS REQUIRED AT MIDPOINT OF CONCRETE BARRIER SEGMENTS LESS THAN 20 FEET IN LENGTH AND NO CONTRACTION JOINTS ARE REQUIRED FOR THOSE SEGMENTS LESS THAN 10 FEET IN LENGTH.

ALL REINFORCING STEEL IN THE CONCRETE MEDIAN BARRIER SHALL BE EPOXY COATED.

CONCRETE MEDIAN BARRIER RAIL SHALL BE CONSTRUCTED DURING STAGE III.

*5D1 AND *5D2 SHALL BE MACHINE THREADED TO FIT TO COUPLER AND DELIVERED CONNECTED. THREADS SHALL BE GREASED TO PERMIT EASY SEPARATION AFTER INSTALLATION. COUPLERS ARE CONSIDERED INCIDENTAL TO THE COST OF CONCRETE MEDIAN BARRIER.

THE *5D1 COUPLED TO *5D2 SHALL BE PUSHED INTO GREEN CONCRETE AFTER POURING AND SCREEDING THE DECK. THE COUPLER SHALL BE INSTALLED TO BE FLUSH WITH THE TOP OF THE FINISHED CONCRETE DECK. ONCE DECK HAS CURED, *5D2 SHALL BE UNTHREADED AND SET ASIDE. A TEMPORARY BOLT SHALL BE INSTALLED IN THE COUPLER AND SEALED TO PREVENT DEBRIS INTRUSION AND PROTECT THE THREADS. SEE DETAIL "D". WHEN CONSTRUCTING MEDIAN BARRIER, REMOVE SEALER AND TEMPORARY BOLT AND THREAD *5D2 IN TO COUPLER.

THE CONTRACTOR MAY SUBMIT ALTERNATIVE DETAILS FOR ANCHORING THE MEDIAN BARRIER INTO THE DECK TO THE ENGINEER FOR REVIEW PRIOR TO CONSTRUCTION OF THE DECK. ANY ALTERNATIVE METHODS APPROVED FOR CONSTRUCTION SHALL BE AT NO ADD'L COST TO THE DEPARTMENT.

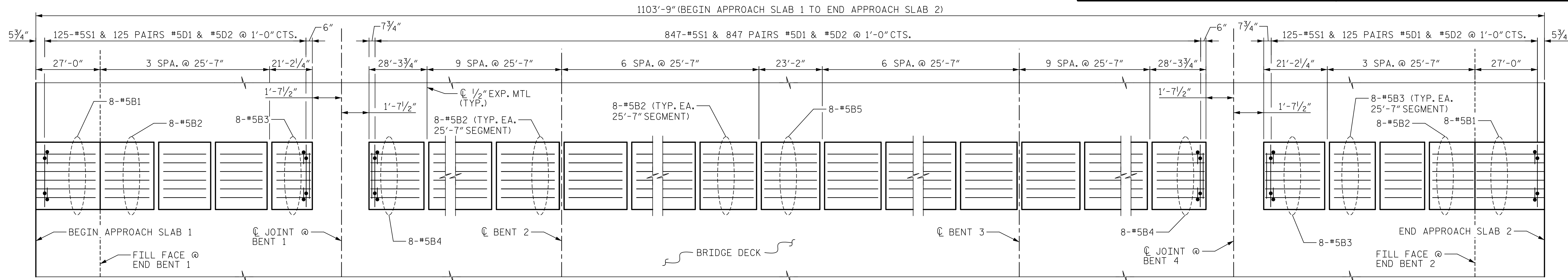
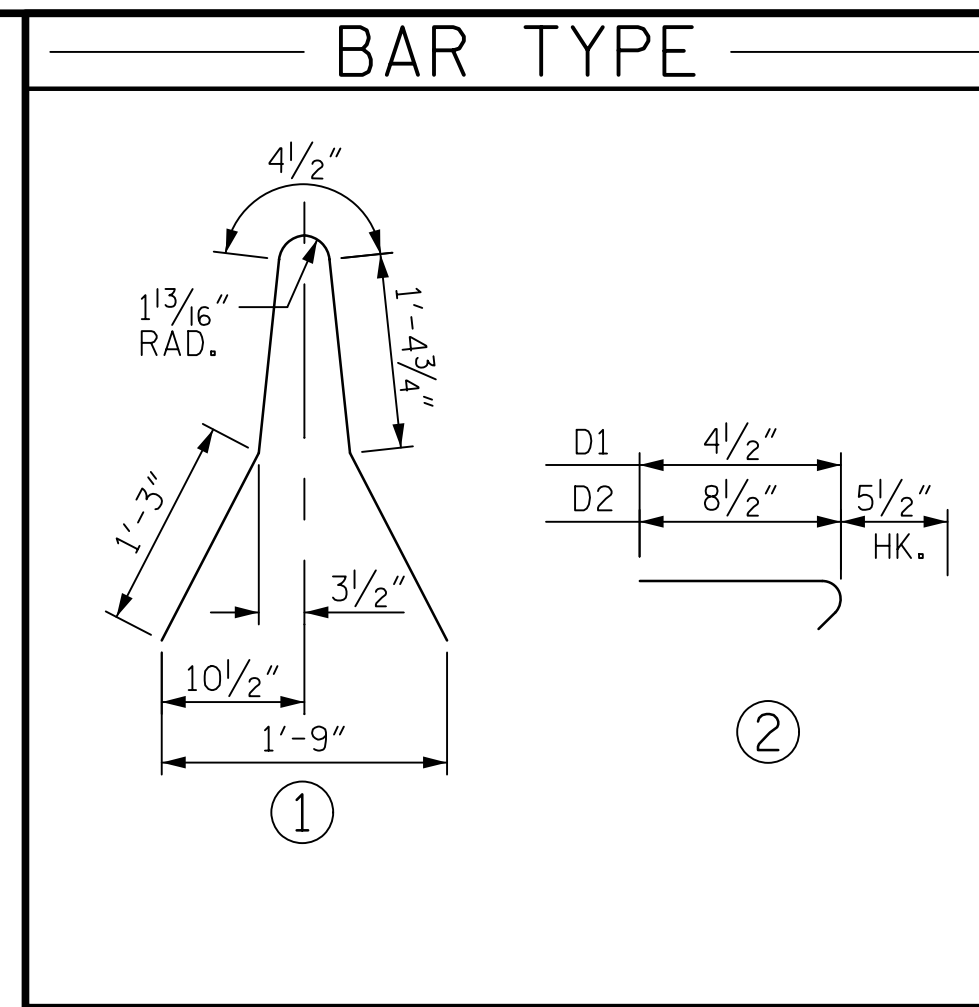
FOR MECHANICAL COUPLERS, SEE SPECIAL PROVISIONS.

S1, D1, AND D2 BARS IN THE BARRIER AND DECK SHALL BE SHIFTED SLIGHTLY, AS NECESSARY, TO PROVIDE 2" MIN. CLEARANCE TO ALL OPEN JOINTS IN THE BARRIER.

THE CONTRACTOR SHALL SUBMIT WORKING DRAWINGS FOR THE D1, D2, AND COUPLER PRIOR TO FABRICATION TO ENSURE PROPER FIT.

FOR ALL-LIGHTWEIGHT CONCRETE, SEE SPECIAL PROVISIONS.

BAR TYPE		BILL OF MATERIAL				
CONCRETE MEDIAN BARRIER						
BAR	NO.	SIZE	TYPE	LENGTH	WEIGHT	
*B1	16	5	STR	26'-8"	445	
*B2	288	5	STR	25'-3"	7,585	
*B3	16	5	STR	20'-10"	348	
*B4	16	5	STR	27'-11"	466	
*B5	8	5	STR	22'-10"	191	
*S1	1097	5	1	5'-8"	6,484	
*D1	2194	5	2	10"	1,907	
*D2	2194	5	2	1'-2"	2,670	
*EPOXY COATED REINF. STEEL					20,096 LBS.	
ALL-LIGHTWEIGHT CONCRETE					118 CU. YDS.	
CONCRETE MEDIAN BARRIER (ALL-LIGHTWEIGHT CONCRETE)					1,097.25 LIN. FT.	

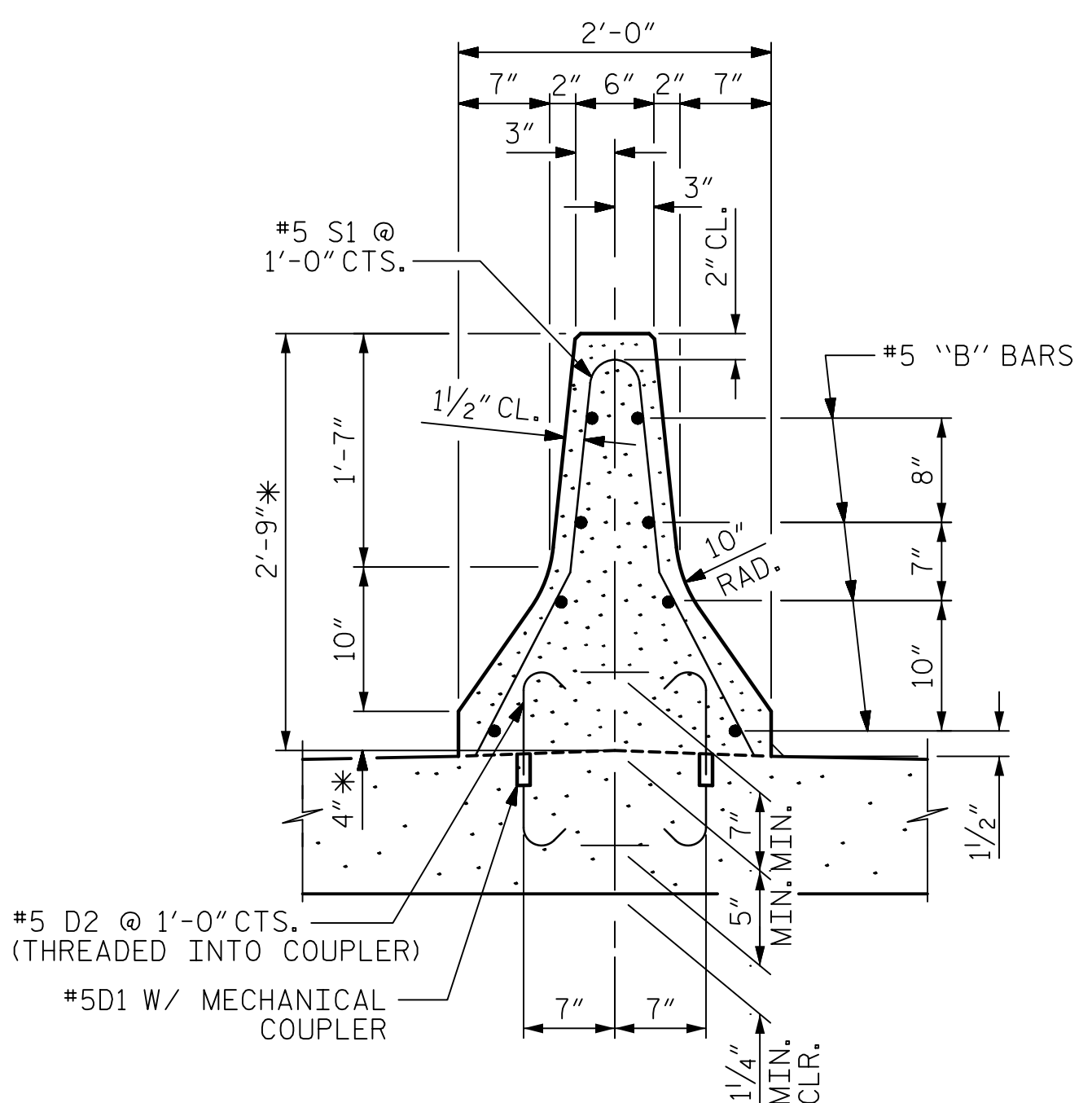


PLAN OF CONCRETE MEDIAN BARRIER

APPROACH SLAB 1 SPAN A SPAN B SPAN C SPAN D SPAN E APPROACH SLAB 2

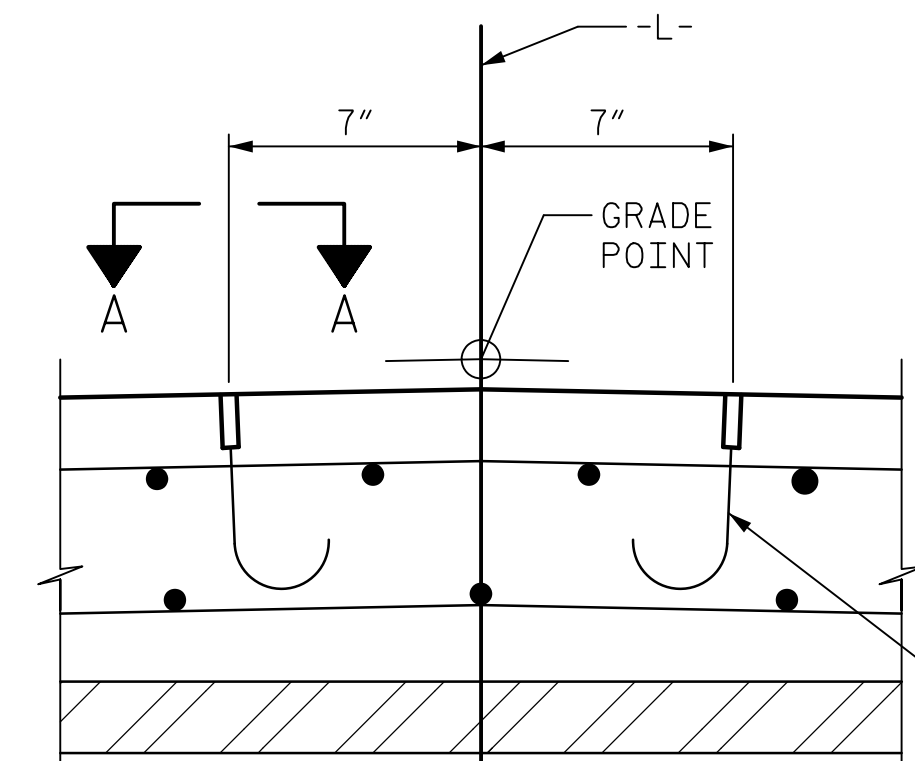
MEDIAN BARRIER COUPLER NOTES:

- INSTALL #5 "D" BARS (WITH FEMALE COUPLER END) IN DECK AT LOCATIONS SHOWN ON "CONCRETE MEDIAN BARRIER" SHEET.
- INSTALL TEMPORARY BOLT INTO COUPLER. BOLT SHALL NOT PROJECT ABOVE THE TOP OF THE DECK.
- BOLT HEAD SHALL BE PROTECTED TO ALLOW FOR REMOVAL AFTER CURING OF DECK. ENGINEER SHALL APPROVE METHOD.
- POUR AND SCREED DECK.
- AT FINAL STAGE, REMOVE BOLT TO INSTALL #5 "D" BAR (WITH THREADED END) FOR MEDIAN BARRIER.



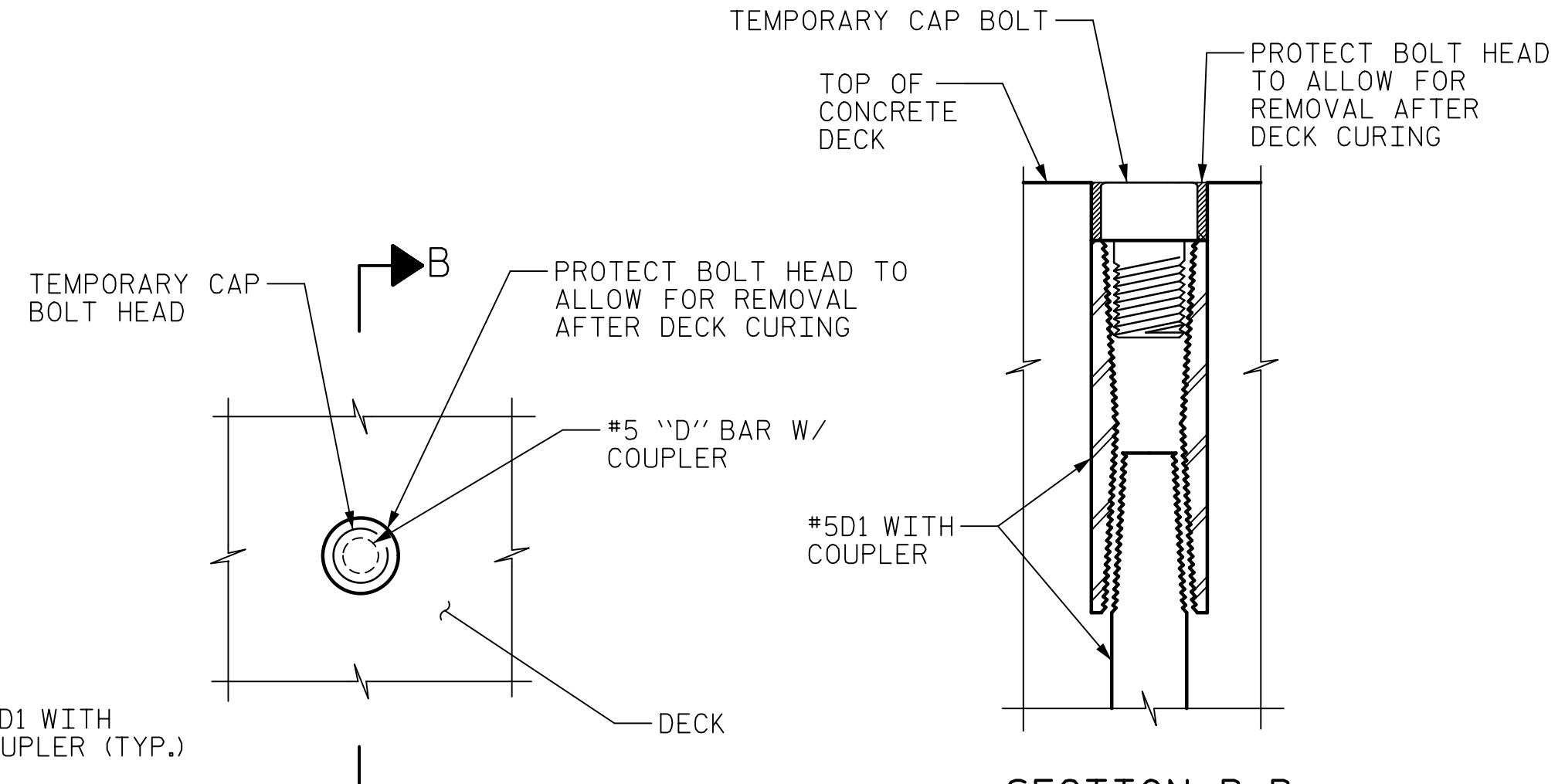
SECTION THRU 2'-9" MEDIAN BARRIER

* DIMENSION TO TOP OF CONCRETE DECK PRIOR TO PPC OVERLAY



SECTION THRU DECK

SHOWN AFTER BARS PUSHED INTO GREEN CONCRETE AND *5D2 UNTHREADED.

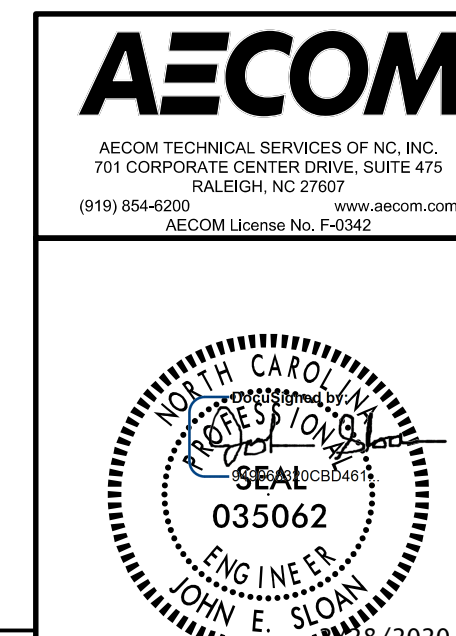


SECTION B-B

VIEW A-A

DETAIL "D"

PROJECT NO. 15BPR.20
 HENDERSON COUNTY
 STATION: 35+30.22 -L-



REVISIONS						SHEET NO.
NO.	BY:	DATE:	NO.	BY:	DATE:	S-102
1			3			TOTAL SHEETS
2			4			129

DOCUMENT NOT CONSIDERED FINAL UNLESS ALL SIGNATURES COMPLETED

DATE: 2/27/2020 TIME: 4:02:52 PM

USER: Merch Research DOB: R:\Structurals\04 Drawings\01_189_15BPR.20_SML\GBR2.dgn

DRAWN BY: M.K. TOM	DATE: 1/2019
CHECKED BY: G. COLS	DATE: 2/2019
DESIGNED BY: G. COLS	DATE: 2/2019
DESIGN CHECKED BY: J. SLOAN	DATE: 2/2019