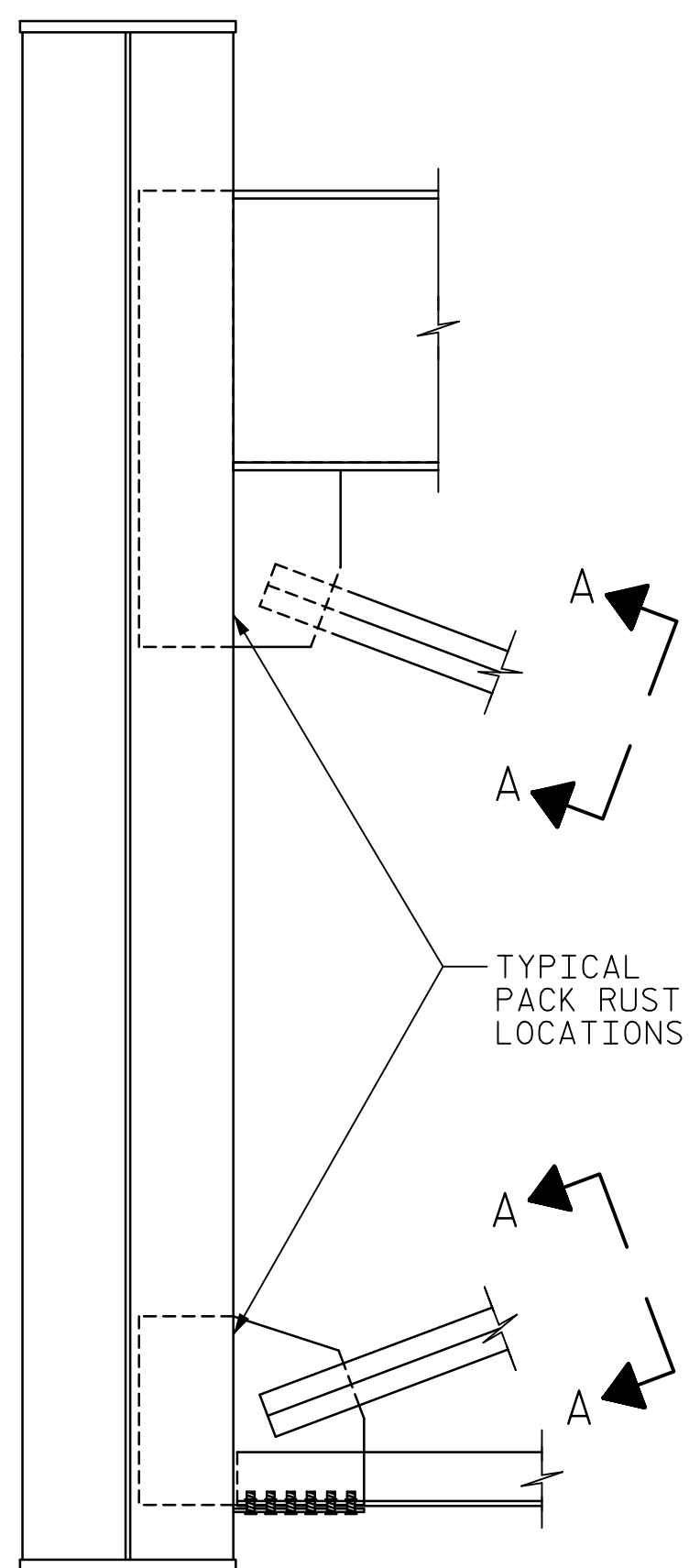
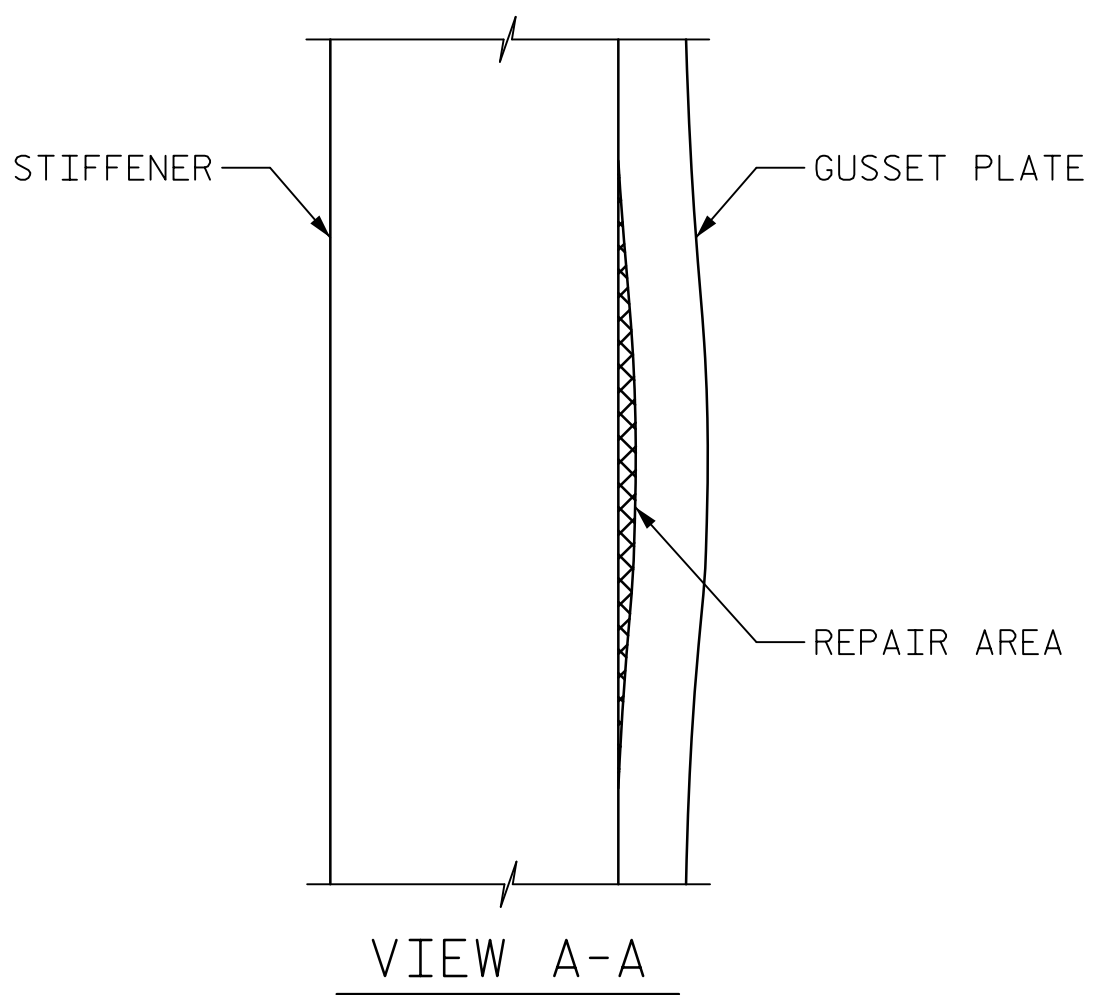


DATE: 2/27/2020
TIME: 3:55:00 PM



ELEVATION OF TYPICAL PACK RUST REPAIR - TYPE II



VIEW A-A

TYPE II PACK RUST REPAIR PROCEDURE:

FOR PACK RUST REPAIRS, HRCSA PENETRANT, AND PAINT, SEE SPECIAL PROVISIONS.

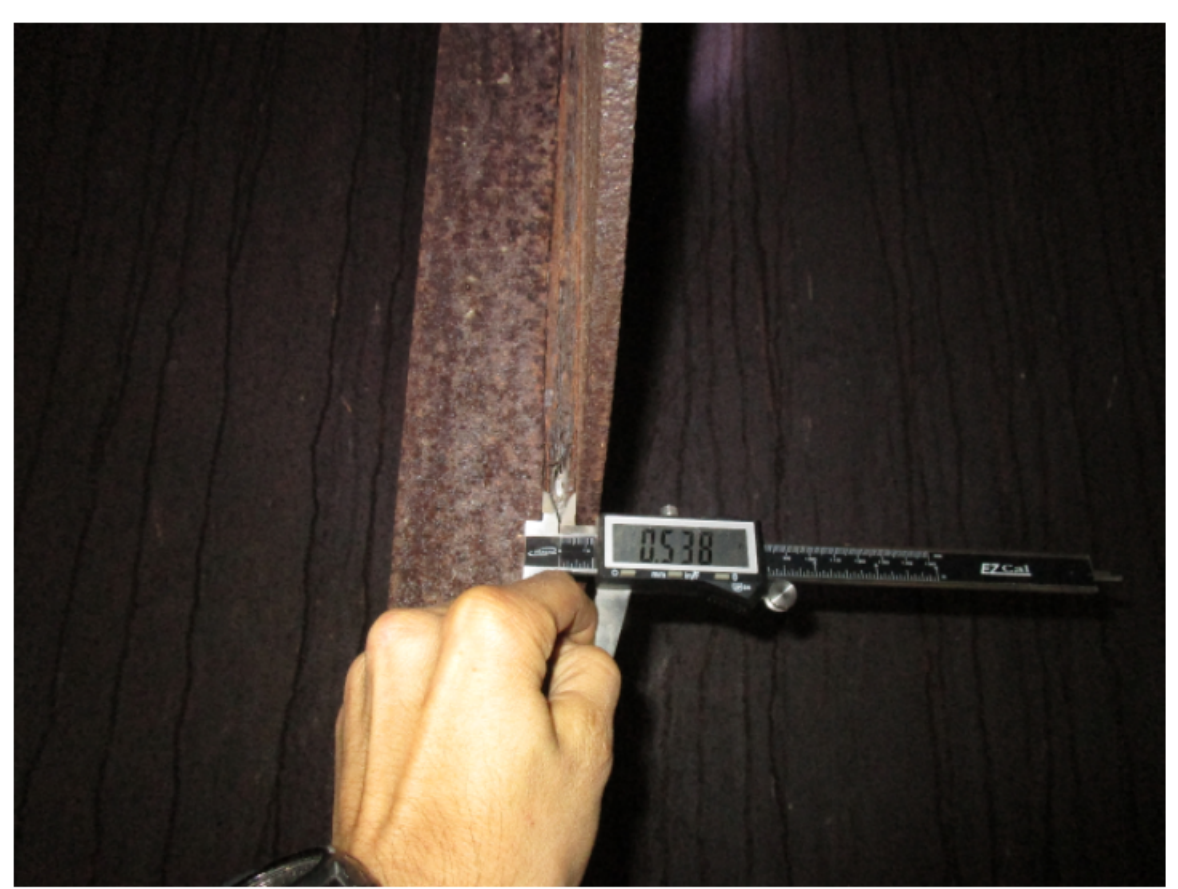
1. CLEAN AREA TO REMOVE PACK RUST. DO NOT DISCONNECT ANY MEMBERS OR LOOSEN ANY BOLTS.
2. APPLY AN HRCSA PENETRANT TO THE CLEANED AREA IN ACCORDANCE WITH MANUFACTURER'S RECOMMENDATIONS.
3. APPLY COMPATIBLE ONE-STEP HRCSA PRIMER/TOP-COAT, APPLYING MULTIPLE COATS AS NECESSARY TO FILL GAP OR CREVICE. COAT THE ENTIRE GUSSET PLATE AND 3" BEYOND THE GUSSET PLATE ON EACH ADJOINING MEMBER.

THE ENGINEER SHALL INSPECT EACH REPAIR AREA BETWEEN EACH STEP OF THE REPAIR.

FOR PAY ITEMS, SEE SHEET 14.

DRAWN BY : M. TOM	DATE : 2/2019
CHECKED BY : G. COLS	DATE : 2/2019
DESIGNED BY : J. SLOAN	DATE : 2/2019
DESIGN CHECKED BY : E. ZHOU	DATE : 2/2019

PR-II-1



PR-II-2



PR-II-3



PR-II-4



PR-II-5



PR-II-6



PHOTO LOCATION LEGEND

- PR-II-1 GIRDER 3, PANEL POINT 12, AT TOP CROSSFRAME CONNECTION; PACK RUST BETWEEN CROSSFRAME DIAGONAL GUSSET PLATE AND CONNECTOR PLATE.
- PR-II-2 GIRDER 3, PANEL POINT 12, AT BOTTOM CROSSFRAME CONNECTION; PACK RUST BETWEEN CROSSFRAME DIAGONAL GUSSET PLATE AND CONNECTOR PLATE.
- PR-II-3 GIRDER 3, PANEL POINT 26, AT TOP CROSSFRAME CONNECTION; PACK RUST BETWEEN CROSSFRAME DIAGONAL GUSSET PLATE AND CONNECTOR PLATE.
- PR-II-4 GIRDER 3, PANEL POINT 16, AT BOTTOM CROSSFRAME CONNECTION; PACK RUST BETWEEN CROSSFRAME DIAGONAL GUSSET PLATE AND CONNECTOR PLATE.
- PR-II-5 GIRDER 4, PANEL POINT 12, AT TOP CROSSFRAME CONNECTION; PACK RUST BETWEEN CROSSFRAME DIAGONAL GUSSET PLATE AND CONNECTOR PLATE.
- PR-II-6 GIRDER 4, PANEL POINT 26, AT TOP CROSSFRAME CONNECTION; PACK RUST BETWEEN CROSSFRAME DIAGONAL GUSSET PLATE AND CONNECTOR PLATE.

PACK RUST REPAIRS

FOR REPRESENTATION ONLY. REPAIR SHALL BE PERFORMED AT EACH LOCATION NOTED, FOR REPAIR LOCATIONS, SEE PHOTO LOCATION LEGEND.

DOCUMENT NOT CONSIDERED FINAL UNLESS ALL SIGNATURES COMPLETED

PROJECT NO. 15BPR.20
HENDERSON COUNTY
STATION: 35+30.22 -L-

SHEET 13 OF 14

AECOM
AECOM TECHNICAL SERVICES OF NC, INC.
701 CORPORATE CENTER DRIVE, SUITE 475
RALEIGH, NC 27607
(919) 854-6200 www.aecom.com
AECOM License No. F-0342

STATE OF NORTH CAROLINA
Professional Engineer
JOHN E. SLOAN
035062
2/28/2020

STATE OF NORTH CAROLINA DEPARTMENT OF TRANSPORTATION RALEIGH						SHEET NO. S-93
REHABILITATION						TOTAL SHEETS 129
STRUCTURAL STEEL REPAIRS						
REVISIONS						
NO.	BY:	DATE:	NO.	BY:	DATE:	
1			3			
2			4			

USER: MrcH/Resourced/DOA/AS/Structurals/04 Drawings/401/JT_LBBPR.20_SML_SRI.dgn