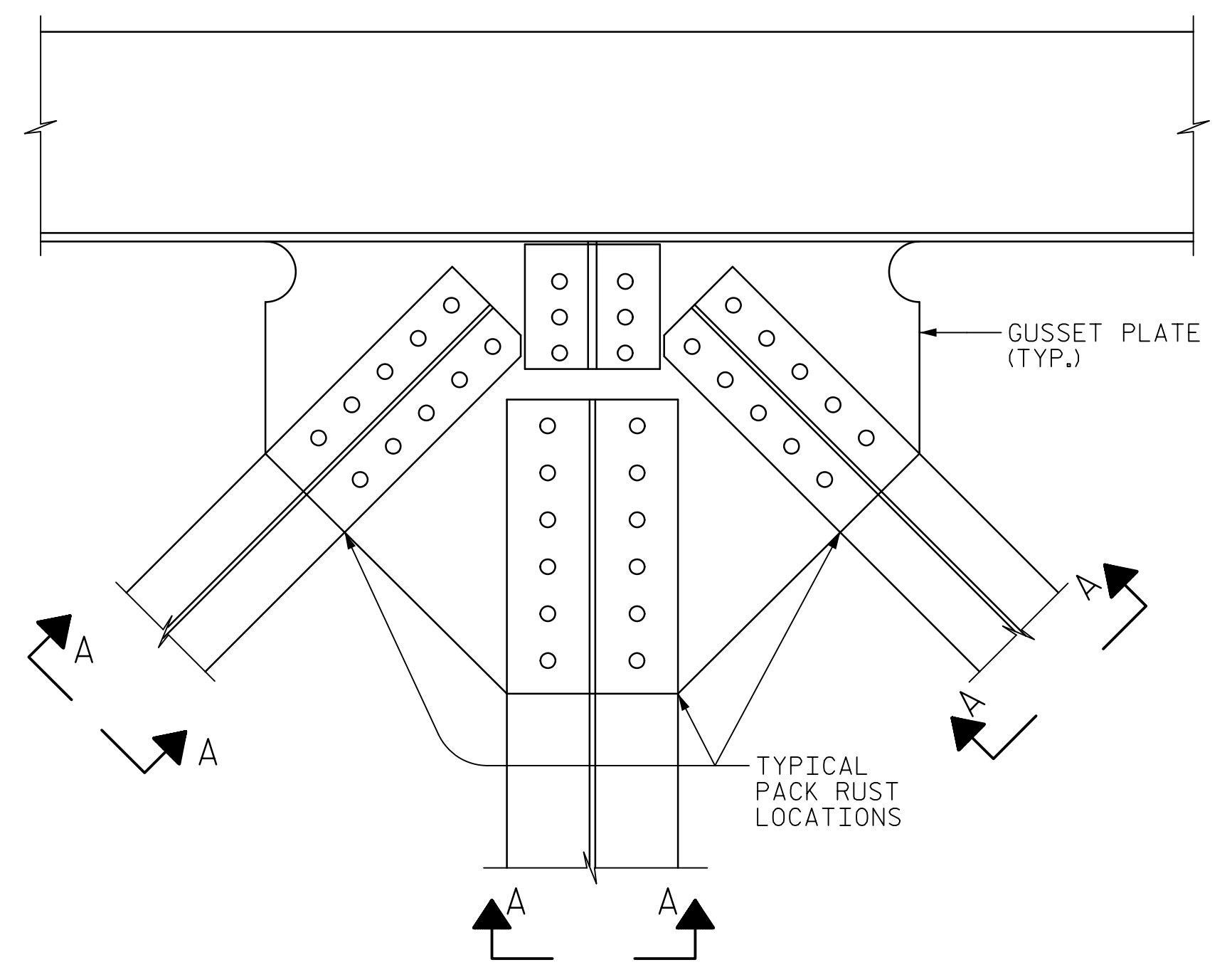
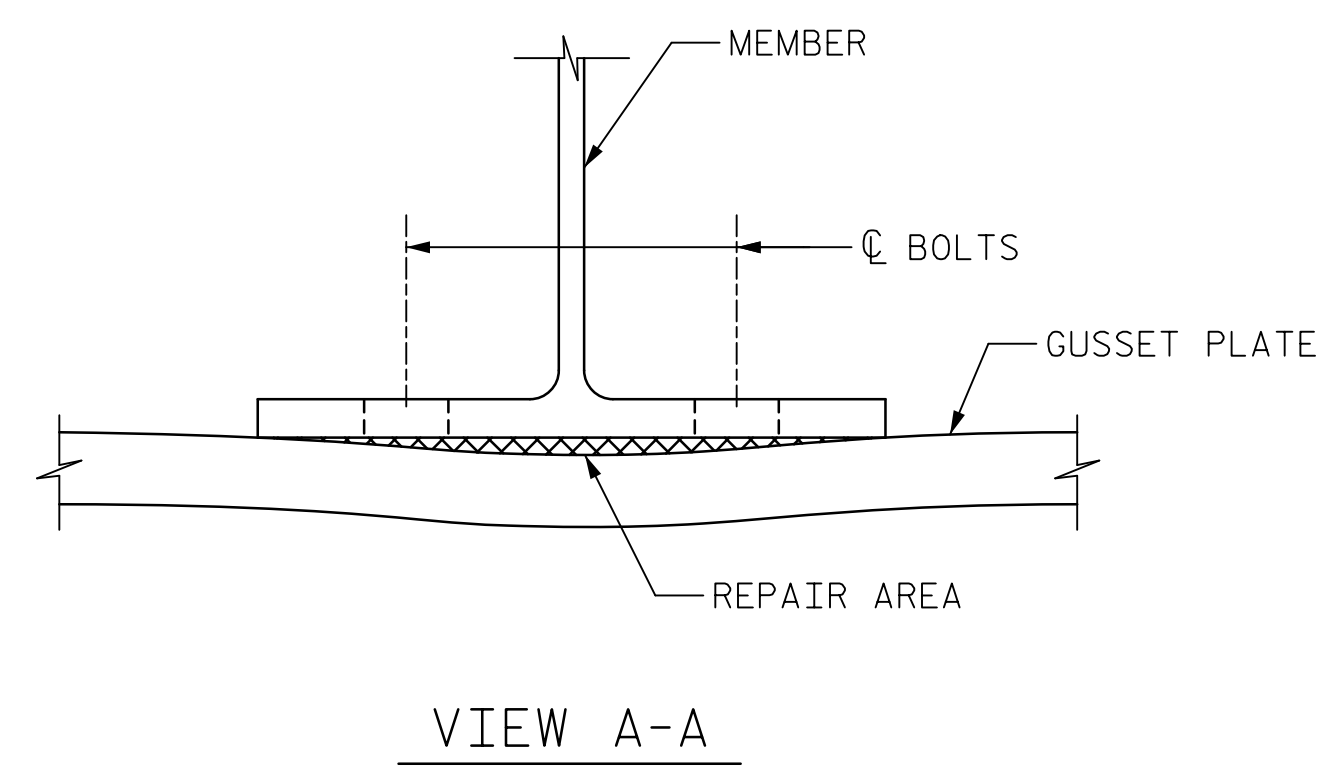


DATE: 2/27/2020
TIME: 3:55:35 PM



PLAN VIEW OF TYPICAL PACK RUST REPAIR LOCATION - TYPE I



VIEW A-A

TYPE I PACK RUST REPAIR PROCEDURE

FOR PACK RUST REPAIRS, HRCSA PENETRANT, AND PAINT, SEE SPECIAL PROVISIONS.

1. CLEAN AREA TO REMOVE PACK RUST. DO NOT DISCONNECT ANY MEMBERS OR LOOSEN ANY BOLTS.
2. APPLY AN HRCSA PENETRANT TO THE CLEANED AREA IN ACCORDANCE WITH MANUFACTURER'S RECOMENDATIONS.
3. APPLY COMPATIBLE ONE-STEP HRCSA PRIMER/TOP-COAT, APPLYING MULTIPLE COATS AS NECESSARY TO FILL GAP OR CREVICE. COAT THE ENTIRE GUSSET PLATE AND 3" BEYOND THE GUSSET PLATE ON EACH ADJOINING MEMBER.

THE ENGINEER SHALL INSPECT EACH REPAIR AREA BETWEEN EACH STEP OF THE REPAIR.

FOR PAY ITEMS, SEE SHEET 14 OF 14.

PR-I-7



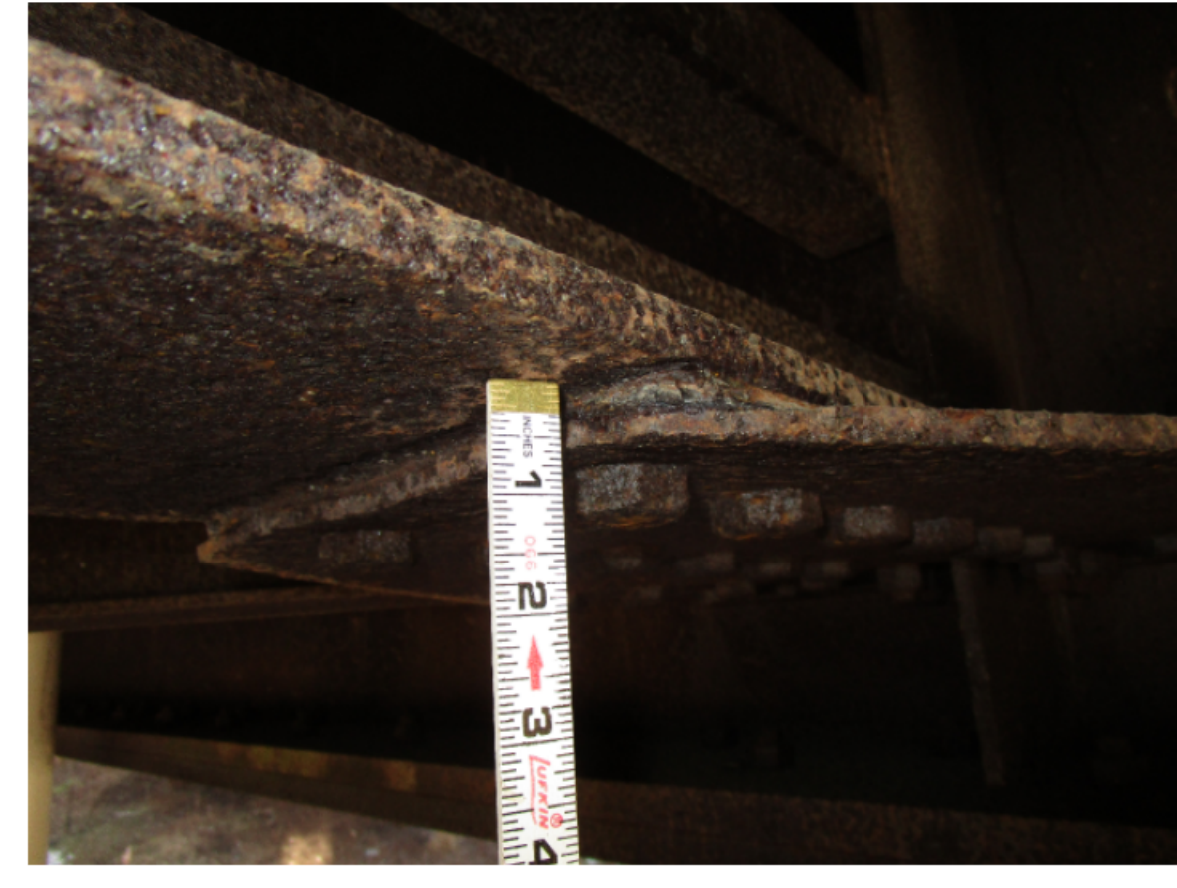
PR-I-8



PR-I-11



PR-I-10



PR-I-9



PR-I-12



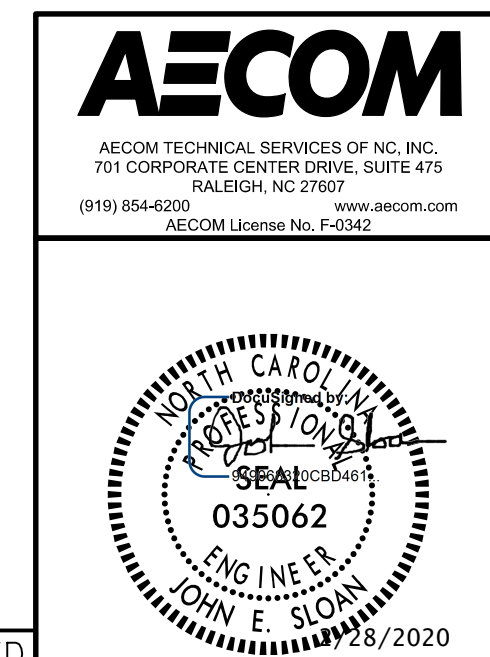
PR-I-13



PHOTOS

PROJECT NO. 15BPR.20
HENDERSON COUNTY
 STATION: 35+30.22 -L-

SHEET 11 OF 14



STATE OF NORTH CAROLINA
 DEPARTMENT OF TRANSPORTATION
 RALEIGH
 REHABILITATION
 STRUCTURAL STEEL
 REPAIRS

REVISIONS						SHEET NO.
NO.	BY:	DATE:	NO.	BY:	DATE:	S-91
1			3			TOTAL SHEETS
2			4			129

PACK RUST REPAIRS
 FOR REPRESENTATION ONLY. REPAIR SHALL BE PERFORMED AT EACH LOCATION NOTED. FOR REPAIR LOCATIONS, SEE PHOTO LOCATION LEGEND ON SHEET 12

DOCUMENT NOT CONSIDERED FINAL UNLESS ALL SIGNATURES COMPLETED

DRAWN BY : H. ROSEMOND	DATE : 2/2019
CHECKED BY : G. COLS	DATE : 2/2019
DESIGNED BY : J. SLOAN	DATE : 2/2019
DESIGN CHECKED BY : E. ZHOU	DATE : 2/2019

USER: Merge/Assess/Draw/Drawings/401_167_16BPR.20_SML_SRI.dgn