

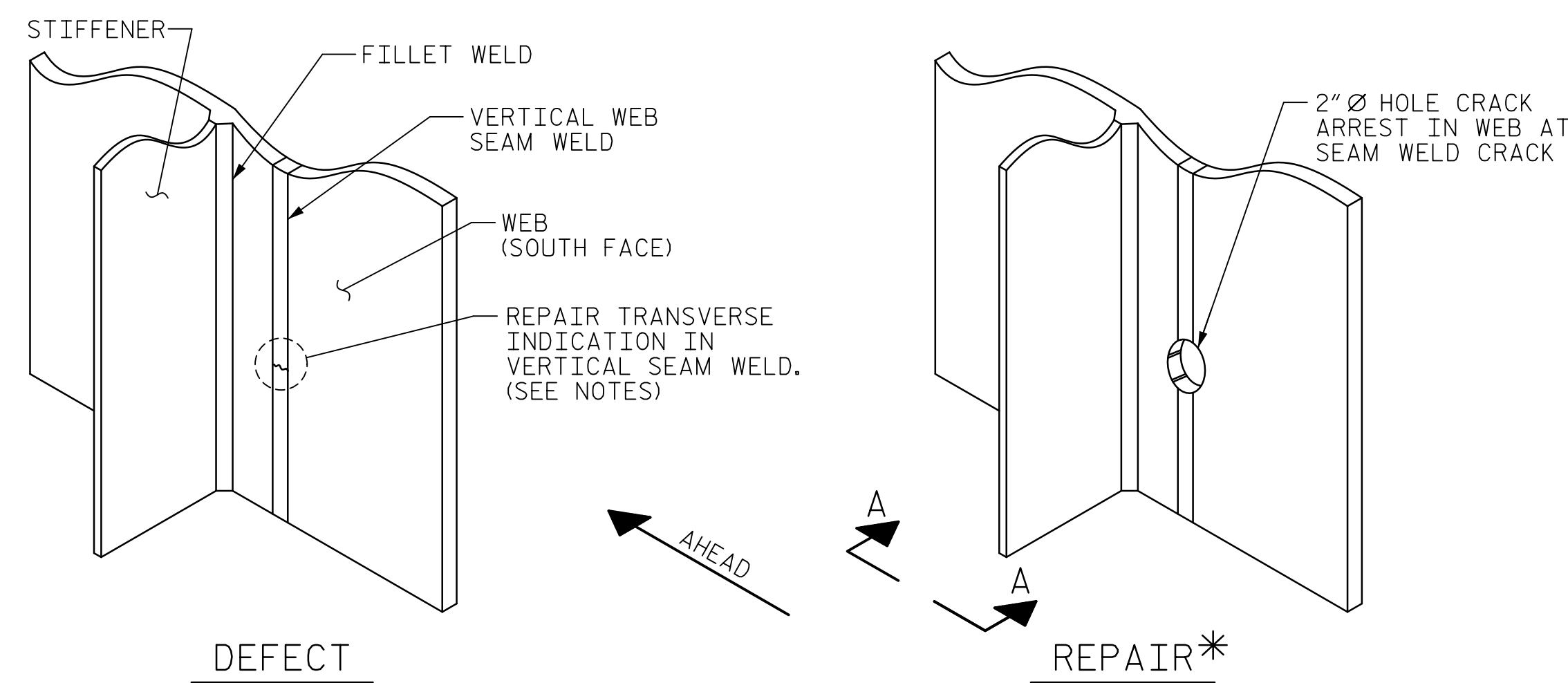
PHOTO



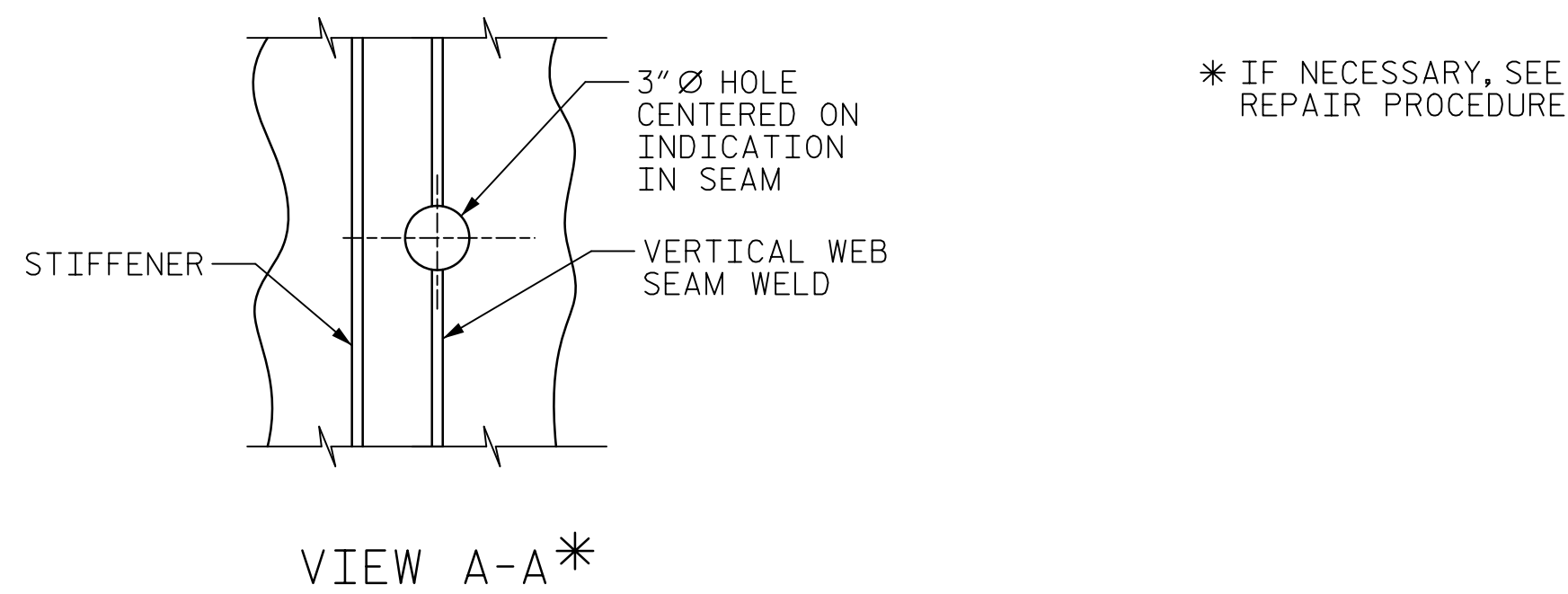
PHOTO



NOTES:
FOR WELD REPAIRS, SEE SPECIAL PROVISIONS.
FOR PAY ITEMS, SEE SHEET 14 OF 14.

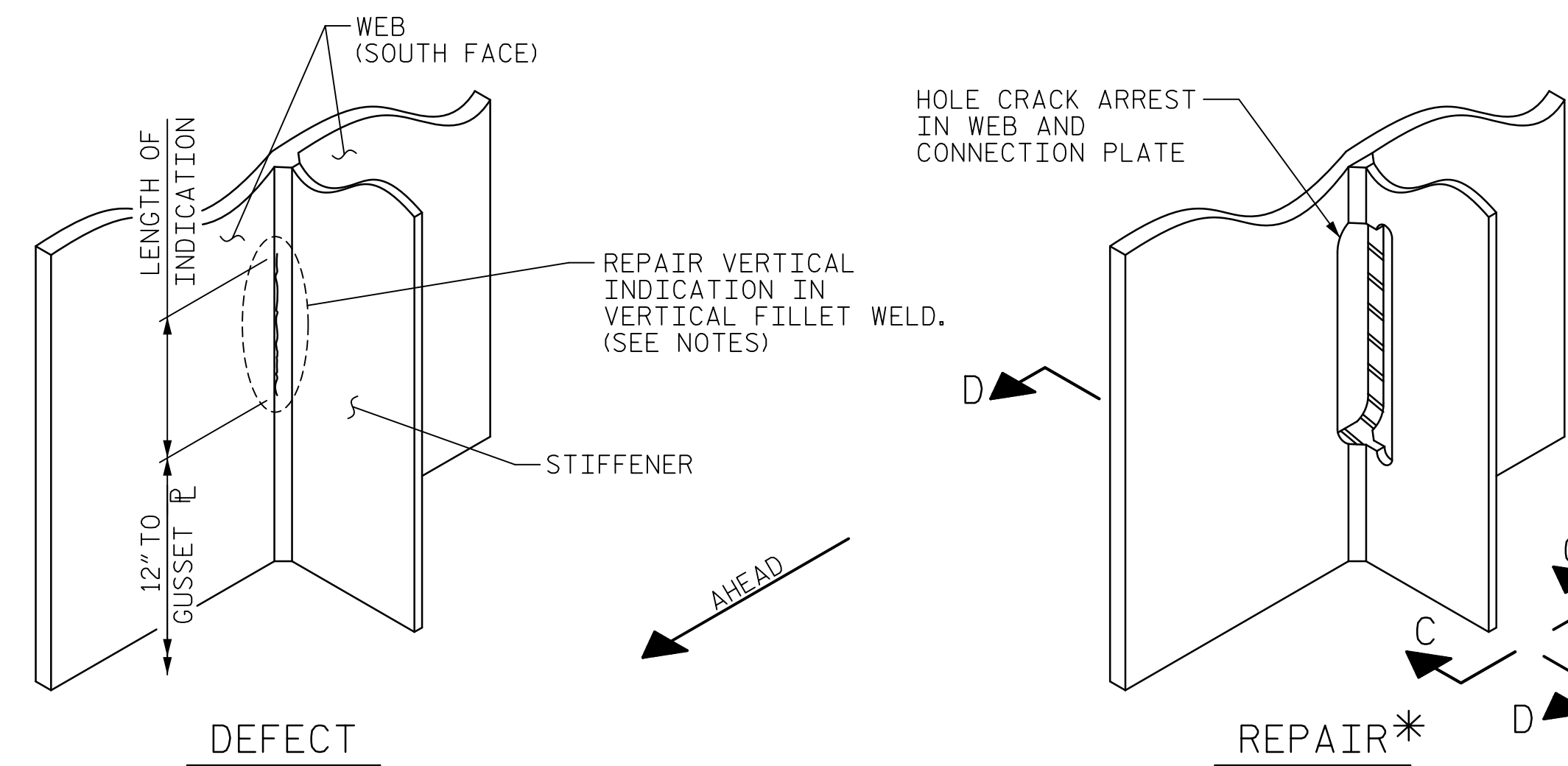


ISOMETRIC VIEW

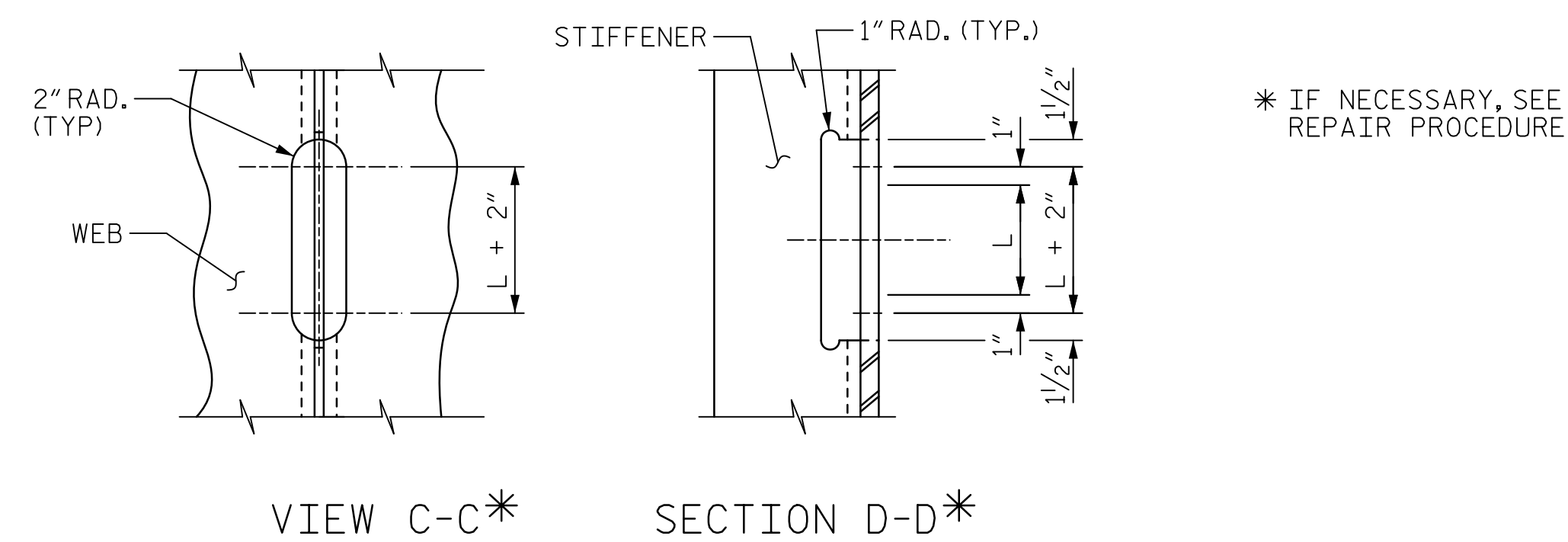


WELD REPAIR #W1

- LOCATION SPAN D GIRDER 2, 12'-0" WEST OF CROSSFRAME 26, 9'-10" ABOVE BOTTOM FLANGE.
- REPAIR PROCEDURE:
- CONTRACTOR SHALL ASSIST ENGINEER TO PERFORM NDT AND DETERMINE EXISTENCE AND EXTENTS OF CRACKING.
 - CONTRACTOR SHALL REMOVE EXISTING CRACK BY GRINDING WITH A SMOOTH PROFILE UP TO 1/8" DEEP OR A DEPTH AS DIRECTED BY ENGINEER.
 - IF ENGINEER DETERMINES NECESSARY AFTER NDT, CONTRACTOR SHALL DRILL A 2" Ø CRACK ARREST HOLE CENTERED AT SEAM WELD.
 - ENGINEER SHALL CHECK ALONG HOLE BORE FROM BOTH SIDES OF GIRDER WEB TO ASSURE COMPLETE REMOVAL OF EXISTING CRACK.
 - CONTRACTOR SHALL GRIND SMOOTH HOLE BORE FOR ANY SURFACE SCRATCHES OR NOTCHES PER INSTRUCTIONS OF ENGINEER.



ISOMETRIC VIEW

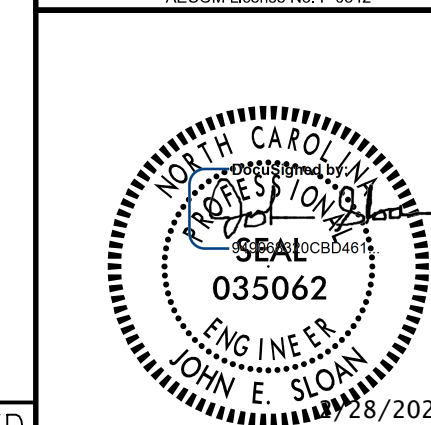


WELD REPAIR #W2

- LOCATION SPAN D GIRDER 2, WEST SIDE OF CROSSFRAME 33.
- REPAIR PROCEDURE:
- CONTRACTOR SHALL ASSIST ENGINEER TO PERFORM NDT AND DETERMINE EXISTENCE AND EXTENTS OF CRACKING.
 - CONTRACTOR SHALL REMOVE EXISTING CRACK BY GRINDING WITH A SMOOTH PROFILE UP TO 1/8" DEEP OR A DEPTH AS DIRECTED BY ENGINEER.
 - IF ENGINEER DETERMINES NECESSARY AFTER NDT, CONTRACTOR SHALL CUT OUT GIRDER WEB AND CONNECTION PLATE AS SHOWN.
 - ENGINEER SHALL CHECK ALONG CUTOUT FROM BOTH SIDES OF GIRDER WEB TO ASSURE COMPLETE REMOVAL OF EXISTING CRACK.
 - CONTRACTOR SHALL GRIND SMOOTH EDGES OF CUTOUT FOR ANY SURFACE SCRATCHES OR NOTCHES PER INSTRUCTIONS OF ENGINEER.

PROJECT NO. 15BPR.20
HENDERSON COUNTY
STATION: 35+30.22 -L-

SHEET 4 OF 14



STATE OF NORTH CAROLINA
DEPARTMENT OF TRANSPORTATION
RALEIGH
REHABILITATION
STRUCTURAL STEEL REPAIRS

REVISIONS						SHEET NO.
NO.	BY:	DATE:	NO.	BY:	DATE:	S-84
1			3			TOTAL SHEETS
2			4			129

DOCUMENT NOT CONSIDERED FINAL UNLESS ALL SIGNATURES COMPLETED

DATE: 2/27/2020 TIME: 3:57:53 PM

USER: Merch_Rosemond DSN: R:\Structures\04_Drawings\401_15BPR.20_SML-SR4.dgn

DRAWN BY : H. ROSEMOND	DATE : 2/2019
CHECKED BY : G. COLS	DATE : 2/2019
DESIGNED BY : J. SLOAN	DATE : 2/2019
DESIGN CHECKED BY : E. ZHOU	DATE : 2/2019