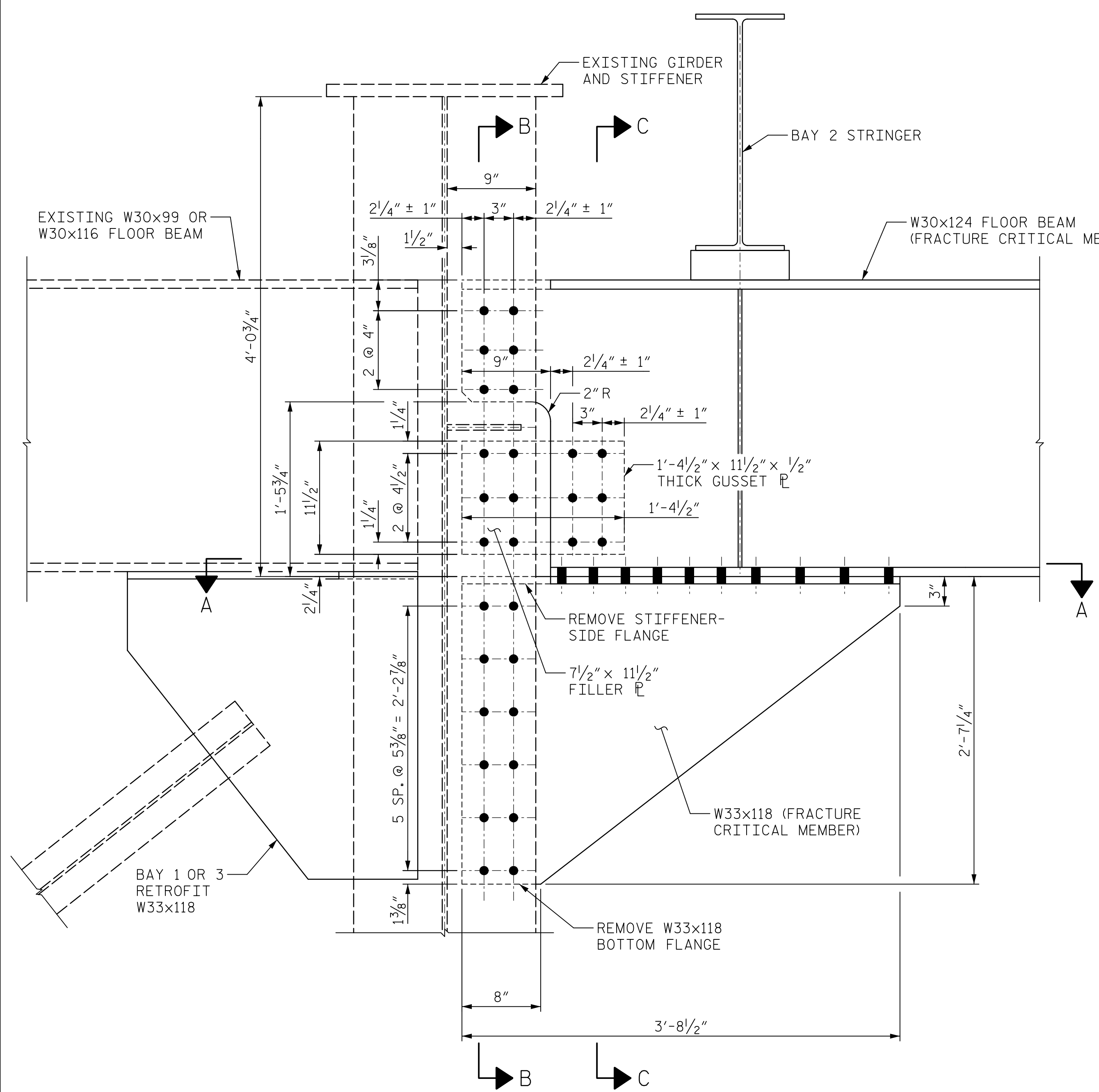
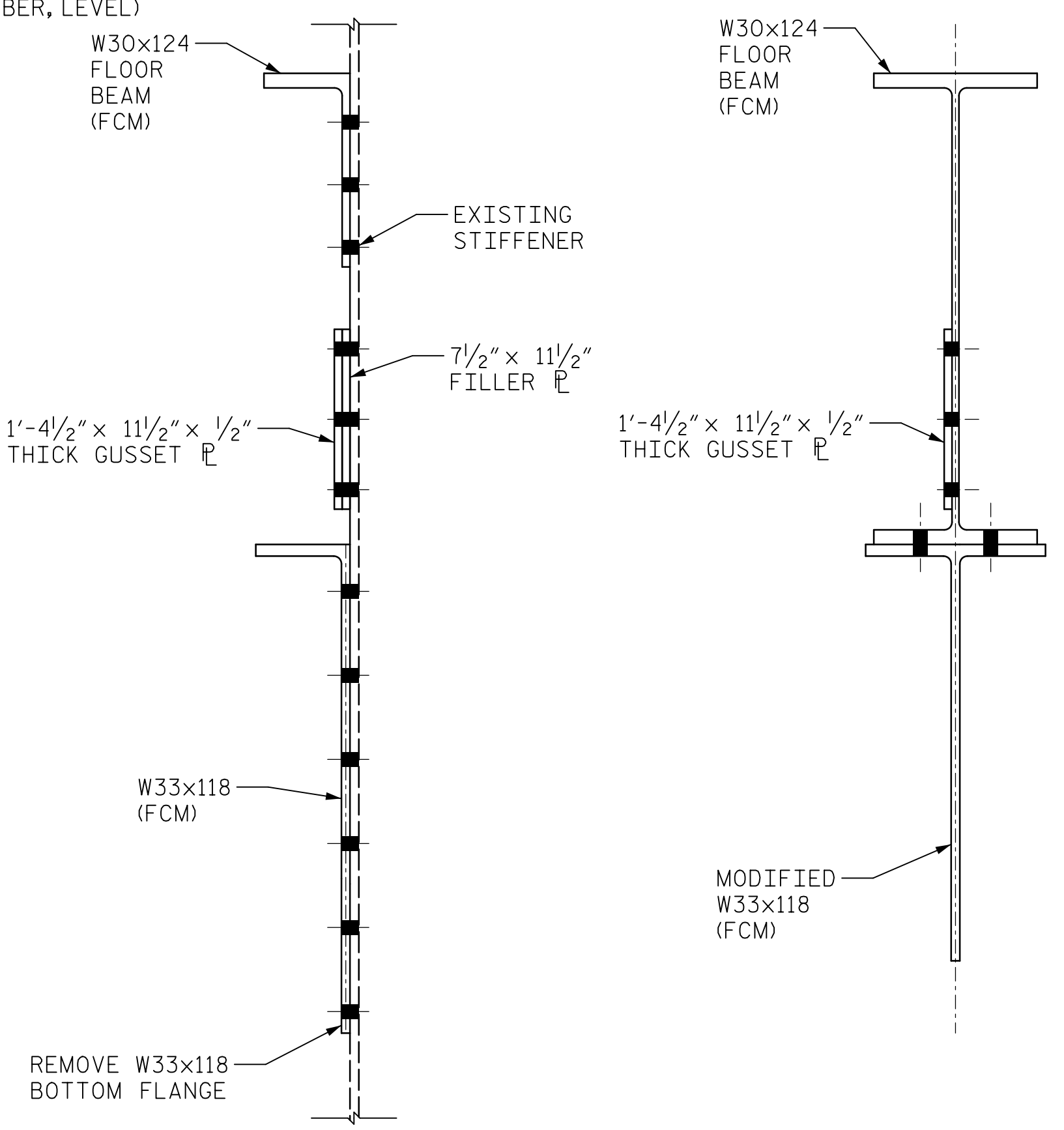


DATE: 02/07/2020  
TIME: 3:30:41 PM



**BAY 2 FLOOR BEAM CONNECTION DETAIL**  
(LOOKING UPSTAIR AT GIRDER 2 SHOWN, GIRDER 3 OPPOSITE HAND)



**SECTION B-B**                      **SECTION C-C**

WEB DISTANCES *		
PANEL POINT	BOTTOM OF GIRDER	TOP OF GIRDER
A1	30'-0 <sup>5</sup> / <sub>16</sub> "	30'-0 <sup>5</sup> / <sub>16</sub> "
A5	29'-11 <sup>9</sup> / <sub>16</sub> "	29'-11 <sup>1</sup> / <sub>2</sub> "
1	29'-11 <sup>1</sup> / <sub>16</sub> "	29'-10 <sup>7</sup> / <sub>8</sub> "
2	29'-11 <sup>1</sup> / <sub>4</sub> "	29'-11 <sup>7</sup> / <sub>16</sub> "
3	29'-11 <sup>3</sup> / <sub>8</sub> "	29'-11"
4	29'-11 <sup>11</sup> / <sub>16</sub> "	30'-0 <sup>1</sup> / <sub>16</sub> "
5	29'-11 <sup>7</sup> / <sub>8</sub> "	30'-0 <sup>1</sup> / <sub>8</sub> "
6	30'-0 <sup>1</sup> / <sub>8</sub> "	30'-0 <sup>1</sup> / <sub>2</sub> "
7	30'-0 <sup>1</sup> / <sub>2</sub> "	30'-1"
8	30'-0 <sup>9</sup> / <sub>16</sub> "	30'-1"
9	30'-1"	30'-1 <sup>9</sup> / <sub>16</sub> "
10	30'-1 <sup>1</sup> / <sub>8</sub> "	30'-1 <sup>9</sup> / <sub>16</sub> "
11	30'-0 <sup>3</sup> / <sub>4</sub> "	30'-1 <sup>1</sup> / <sub>4</sub> "
12	29'-11 <sup>7</sup> / <sub>16</sub> "	29'-11 <sup>1</sup> / <sub>16</sub> "
13	29'-11 <sup>1</sup> / <sub>8</sub> "	29'-10 <sup>11</sup> / <sub>16</sub> "
14	29'-10 <sup>3</sup> / <sub>16</sub> "	29'-9 <sup>3</sup> / <sub>16</sub> "
15	29'-10"	29'-9 <sup>1</sup> / <sub>4</sub> "
16	29'-9 <sup>5</sup> / <sub>8</sub> "	29'-9 <sup>5</sup> / <sub>16</sub> "
17	29'-9 <sup>9</sup> / <sub>16</sub> "	29'-9 <sup>5</sup> / <sub>8</sub> "
18	29'-9 <sup>9</sup> / <sub>16</sub> "	29'-9 <sup>1</sup> / <sub>8</sub> "
19	29'-9 <sup>7</sup> / <sub>16</sub> "	29'-9 <sup>1</sup> / <sub>4</sub> "
20	29'-9 <sup>3</sup> / <sub>4</sub> "	29'-9 <sup>5</sup> / <sub>16</sub> "
21	29'-9 <sup>1</sup> / <sub>8</sub> "	29'-9 <sup>1</sup> / <sub>2</sub> "
22	29'-10 <sup>3</sup> / <sub>8</sub> "	29'-9 <sup>3</sup> / <sub>8</sub> "
23	29'-10 <sup>1</sup> / <sub>16</sub> "	29'-9 <sup>5</sup> / <sub>8</sub> "
24	29'-10 <sup>3</sup> / <sub>8</sub> "	29'-10"
25	29'-11 <sup>13</sup> / <sub>16</sub> "	29'-11 <sup>3</sup> / <sub>4</sub> "
26	29'-11 <sup>1</sup> / <sub>8</sub> "	30'-0 <sup>1</sup> / <sub>16</sub> "
27	30'-0 <sup>1</sup> / <sub>16</sub> "	30'-0 <sup>5</sup> / <sub>8</sub> "
28	30'-0 <sup>7</sup> / <sub>8</sub> "	30'-1 <sup>1</sup> / <sub>16</sub> "
29	30'-0 <sup>3</sup> / <sub>4</sub> "	30'-1 <sup>1</sup> / <sub>8</sub> "
30	30'-0 <sup>5</sup> / <sub>16</sub> "	30'-0 <sup>3</sup> / <sub>4</sub> "
31	30'-0 <sup>13</sup> / <sub>16</sub> "	30'-1 <sup>1</sup> / <sub>16</sub> "
32	30'-0 <sup>1</sup> / <sub>4</sub> "	30'-0 <sup>9</sup> / <sub>16</sub> "
33	29'-11 <sup>5</sup> / <sub>16</sub> "	30'-0 <sup>9</sup> / <sub>16</sub> "
34	29'-11 <sup>5</sup> / <sub>16</sub> "	29'-11 <sup>3</sup> / <sub>8</sub> "
35	29'-11"	29'-10 <sup>7</sup> / <sub>8</sub> "
36	29'-11 <sup>3</sup> / <sub>16</sub> "	29'-10 <sup>1</sup> / <sub>8</sub> "
37	29'-10 <sup>3</sup> / <sub>4</sub> "	29'-10 <sup>9</sup> / <sub>16</sub> "
E1	29'-11"	29'-11"
E5	30'-0 <sup>7</sup> / <sub>16</sub> "	30'-0 <sup>7</sup> / <sub>16</sub> "

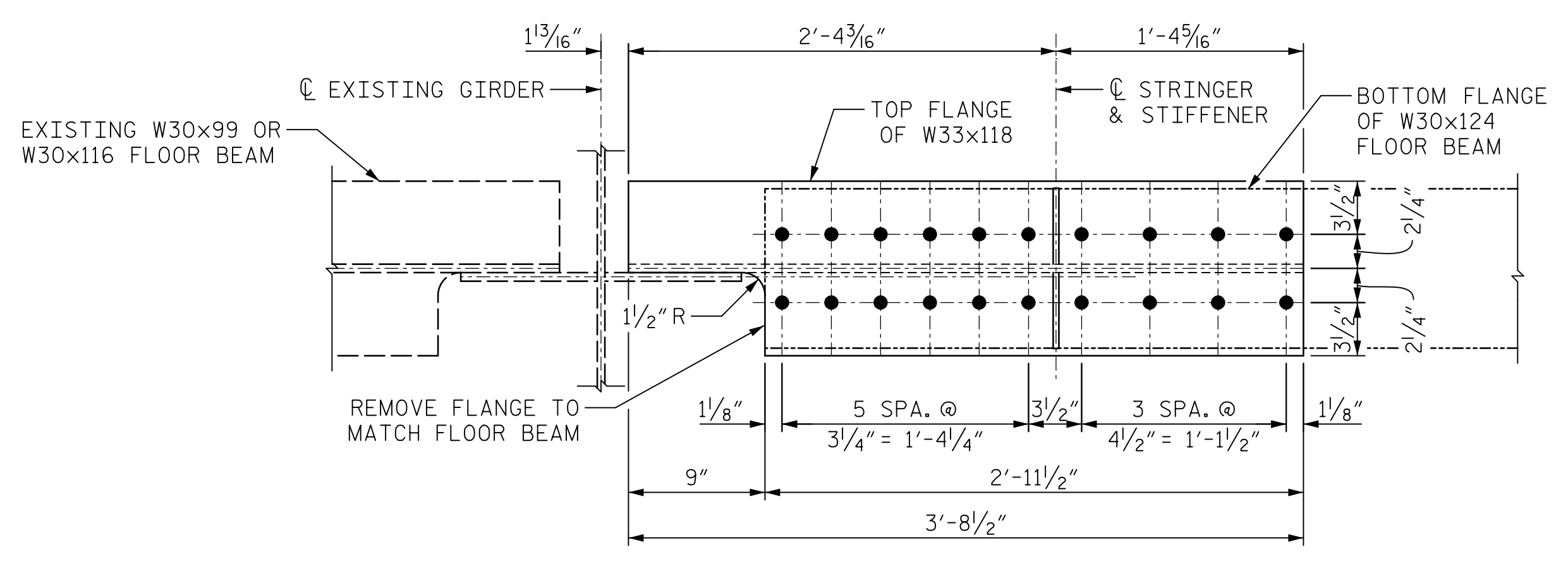
\* APPROXIMATE FACE TO FACE OF WEB FIELD MEASUREMENTS BETWEEN GIRDERS 2 AND 3.

FIELD-MEASURED VALUES TAKEN DECEMBER 2018 AND SHALL BE CONSIDERED REPRESENTATIVE ONLY. CONTRACTOR SHALL FIELD-VERIFY ALL MEASUREMENTS BETWEEN GIRDERS 2 AND 3 PRIOR TO ORDERING AND FABRICATION OF BAY 2 CROSSFRAMES. THE CONTRACTOR SHALL HAVE NO CLAIM WHATSOEVER AGAINST THE DEPARTMENT OR AECOM FOR ANY DIFFERENCES BETWEEN VALUES PRESENTED ON THE PLANS AND ACTUAL CONDITIONS.

**NOTES:**

- FILLER PLATE SHALL BE THE SAME THICKNESS AS FLOOR BEAM WEB.
- BOLT LOCATIONS MAY BE ADJUSTED ACCORDING TO FIELD CONDITIONS WITHIN THE LIMITS OF THE MIN./MAX. DIMENSIONS SHOWN.
- CONTRACTOR MAY REPLACE THE W33x118 USING A BUILT-UP SECTION WITH THE SAME SIZE PLATES AND A FULL PENETRATION WELD BETWEEN THE FLANGE AND THE WEB.
- CONTRACTOR SHALL INSTALL THE BAY 1 OR 3 RETROFIT W33x118 PRIOR TO INSTALLING THE FLOOR BEAM AT EACH CROSS FRAME POINT.
- CONTRACTOR SHALL INSTALL FLOOR BEAMS AS SHOWN IN BAY 2 AT INTERMEDIATE CROSS FRAMES A2-A4, 2-11, 13-25, 27-36, AND E2-E4.

PROJECT NO. 15BPR.20  
HENDERSON COUNTY  
 STATION: 35+30.22 -L-



**SECTION A-A**

DRAWN BY : S. STREDNAK      DATE : 04/2019  
 CHECKED BY : J. SLOAN      DATE : 04/2019  
 DESIGNED BY : D. TUTTLE/N. BROWN      DATE : 04/2019  
 DESIGN CHECKED BY : J. LIU/J. SLOAN      DATE : 04/2019

DOCUMENT NOT CONSIDERED  
 FINAL UNLESS ALL  
 SIGNATURES COMPLETED



STATE OF NORTH CAROLINA  
**DEPARTMENT OF TRANSPORTATION**  
 RALEIGH

SUPERSTRUCTURE

**STRUCTURAL STEEL**  
**BAY 2 FLOOR BEAM**  
**CONNECTION DETAILS**

REVISIONS						SHEET NO.
NO.	BY:	DATE:	NO.	BY:	DATE:	S-76
1			3			TOTAL SHEETS
2			4			129

USER: Merch Research  
 DGN: R:\Structures\04 Drawings\01\_15BPR.20\_SML.ctb