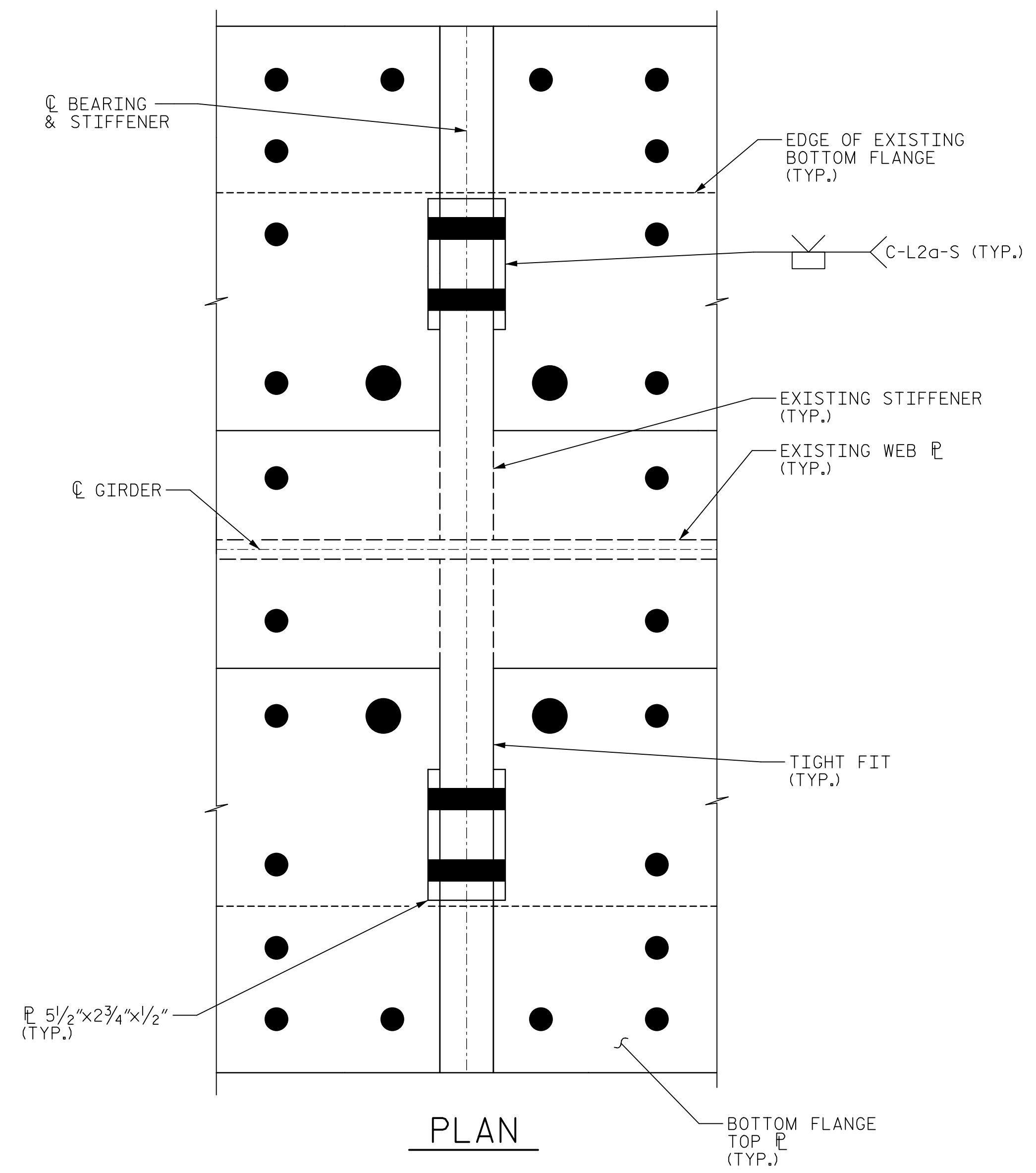
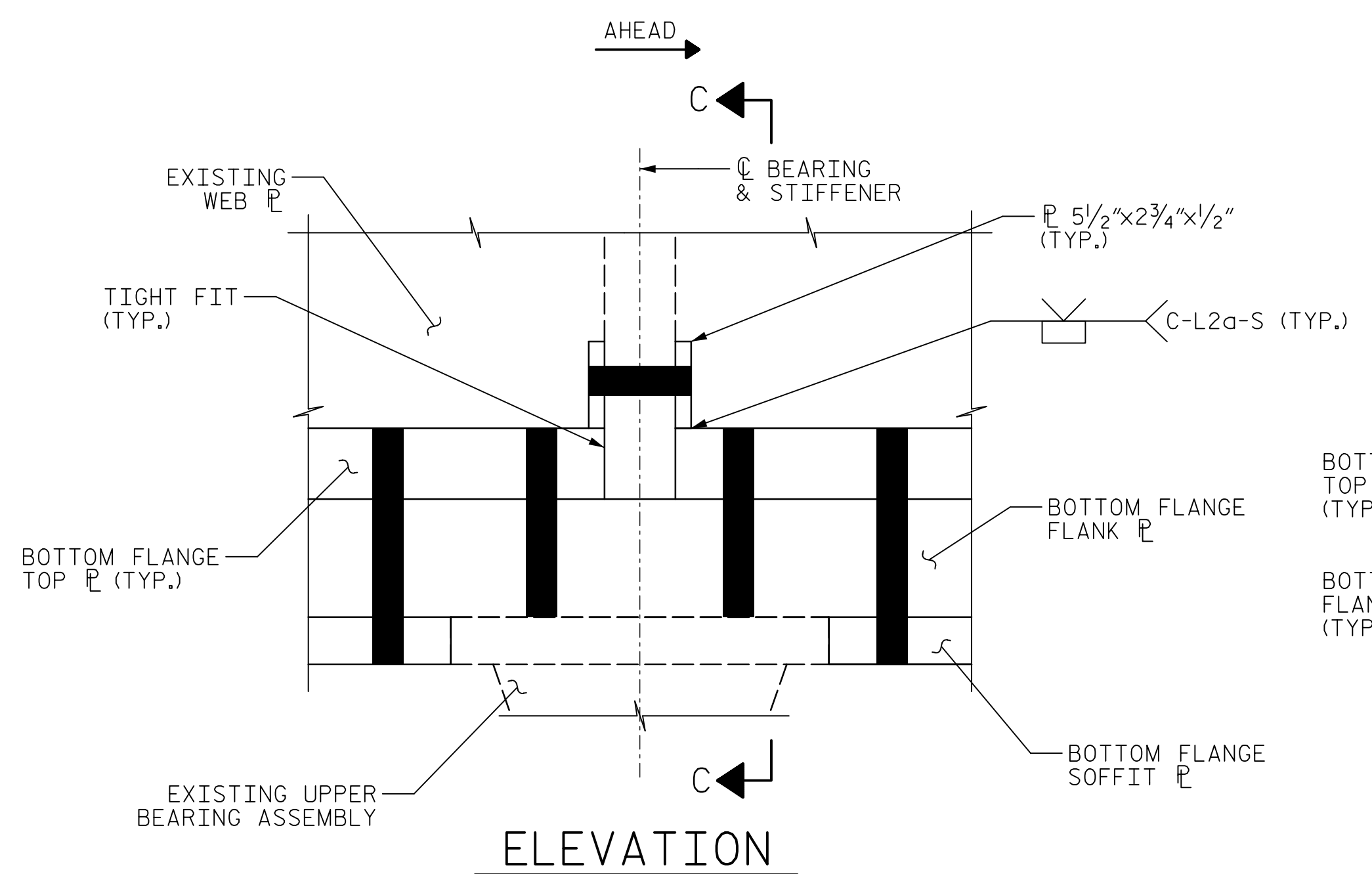


DATE: 2/27/2020
TIME: 3:25:45 PM

USER: Arch/Resemond
DGN: R:\Structures\04 Drawings\01\135_15BPR20_SML\6r.cad

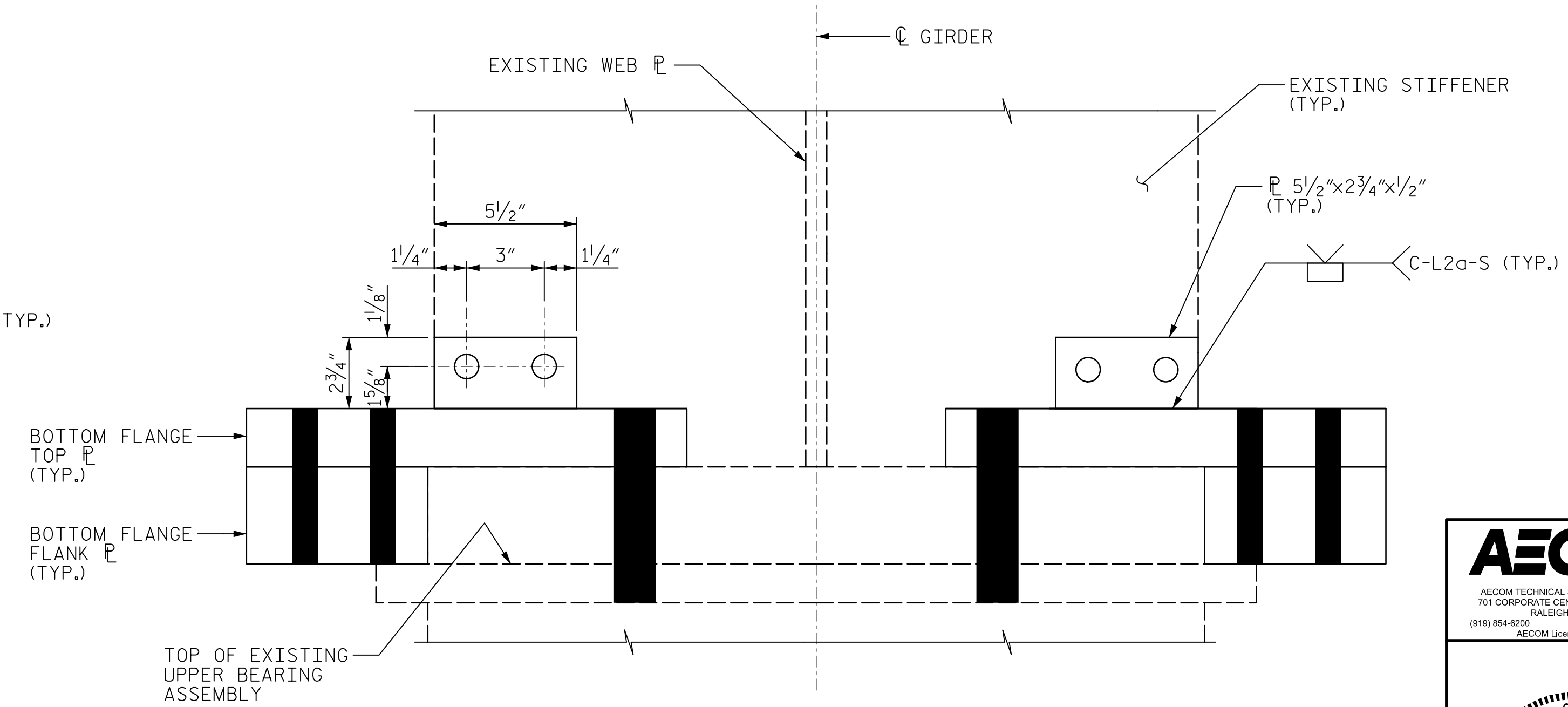


PLAN



ELEVATION

TYPICAL AT CROSSFRAME POINTS 12 & 26.



VIEW C-C

DIMENSIONS SHOWN ARE SYMMETRICAL ABOUT C OF GIRDER.

WEB GAP DETAIL Y

CROSSFRAME POINT	WEB GAP DETAIL ID LOCATIONS			
	GIRDER 1	GIRDER 2	GIRDER 3	GIRDER 4
12	Y	Y	Y	Y
26	Y	Y	Y	Y

NOTES:

PLACE SILICONE SEALANT AT CORNERS AND JOINTS AS DIRECTED BY THE ENGINEER.

WHEN INSTALLING THE BOTTOM FLANGE TOP PLATES, THE CONTRACTOR MAY ONLY REMOVE A SINGLE 1/2" DIAMETER BEARING ANCHOR BOLT AT A TIME. CONTRACTOR SHALL REINSTALL THE ANCHOR BOLT WITH THE TOP PLATE BEFORE REMOVING ANOTHER BOLT.

PROJECT NO. 15BPR.20
HENDERSON COUNTY
 STATION: 35+30.22 -L-
 SHEET 4 OF 4

AECOM
AECOM TECHNICAL SERVICES OF NC, INC.
 701 CORPORATE CENTER DRIVE, SUITE 475
 RALEIGH, NC 27607
 (919) 854-6200 www.aecom.com
 AECOM License No. F-0342

STATE OF NORTH CAROLINA
 DEPARTMENT OF TRANSPORTATION
 RALEIGH

SUPERSTRUCTURE

**STRUCTURAL STEEL
 WEB GAP RETROFIT
 DETAILS**

REVISIONS

NO.	BY:	DATE:	NO.	BY:	DATE:
1			3		
2			4		

SHEET NO. S-73
 TOTAL SHEETS 129

28/2020

DRAWN BY : M. CATER
 CHECKED BY : J.E. SLOAN
 DESIGNED BY : H. ROSEMOND
 DESIGN CHECKED BY : J. SLOAN

DATE : 10/2019
 DATE : 10/2019
 DATE : 10/2019
 DATE : 10/2019

DOCUMENT NOT CONSIDERED
 FINAL UNLESS ALL
 SIGNATURES COMPLETED