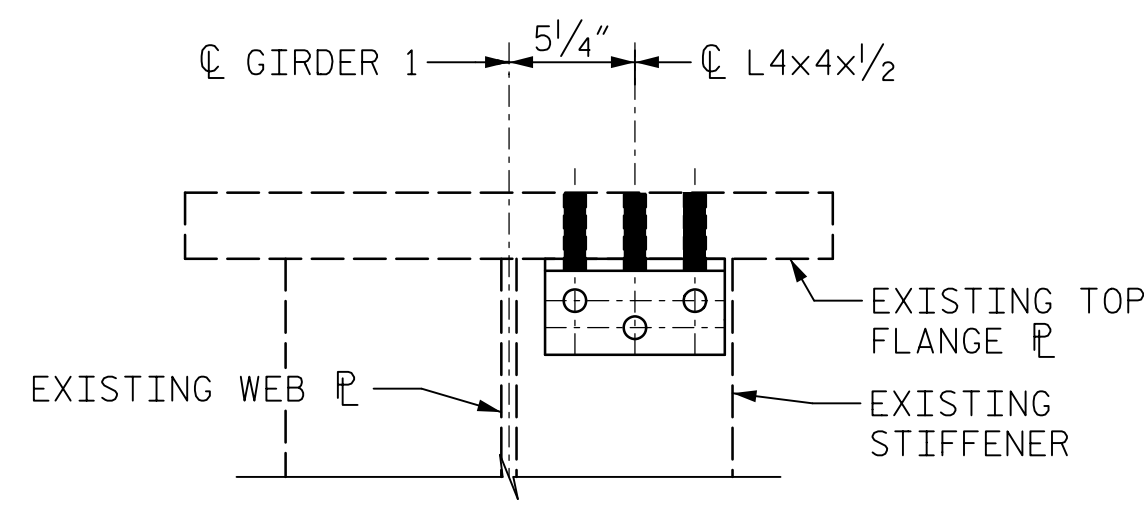
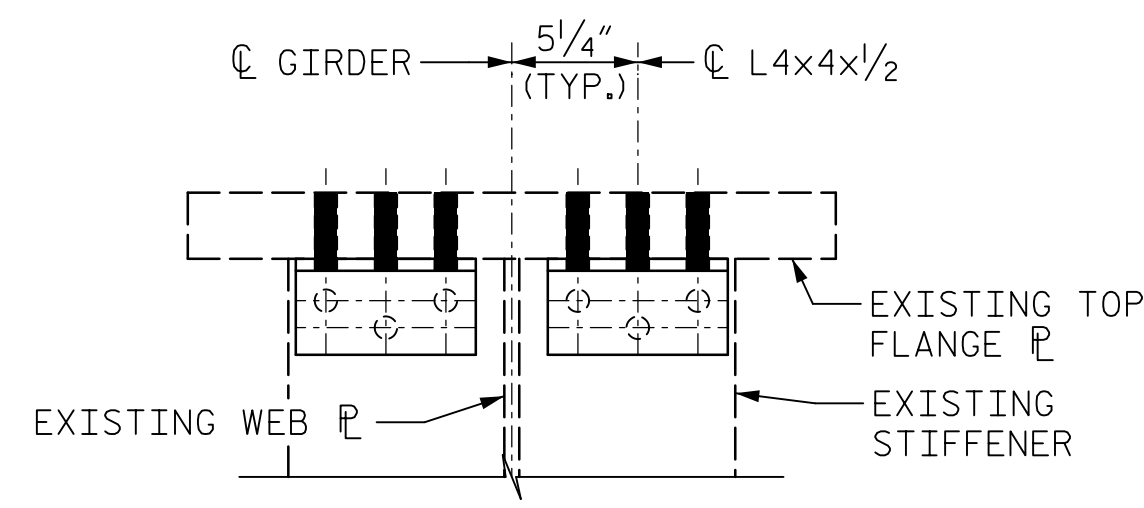


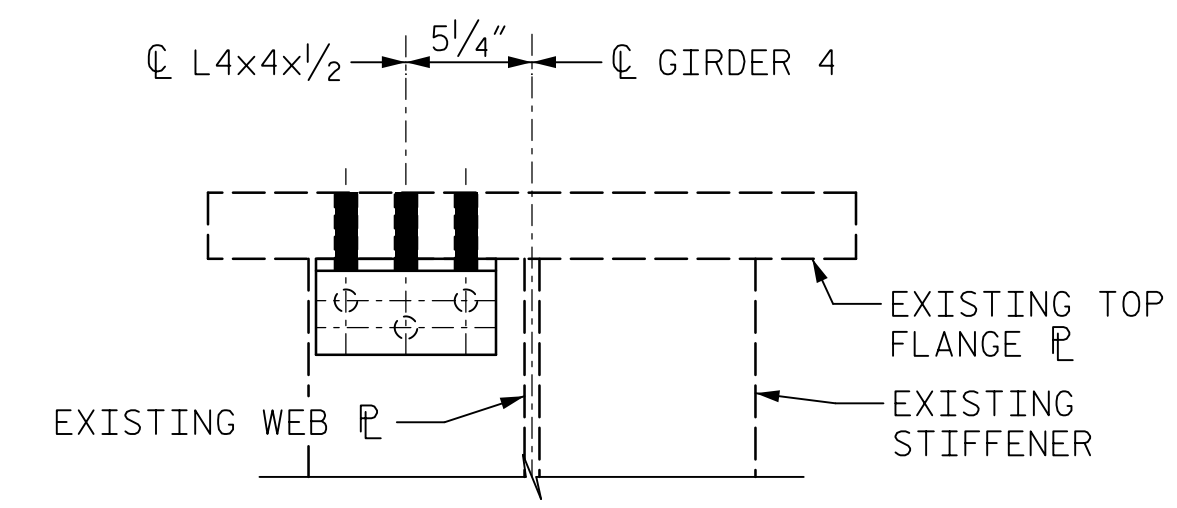
DATE: 2/27/2020 TIME: 3:25:48 PM
USER: MchR/Resmead DOB: R:\Structures\04 Drawings\01_35_15BPR20_SML\G44gn



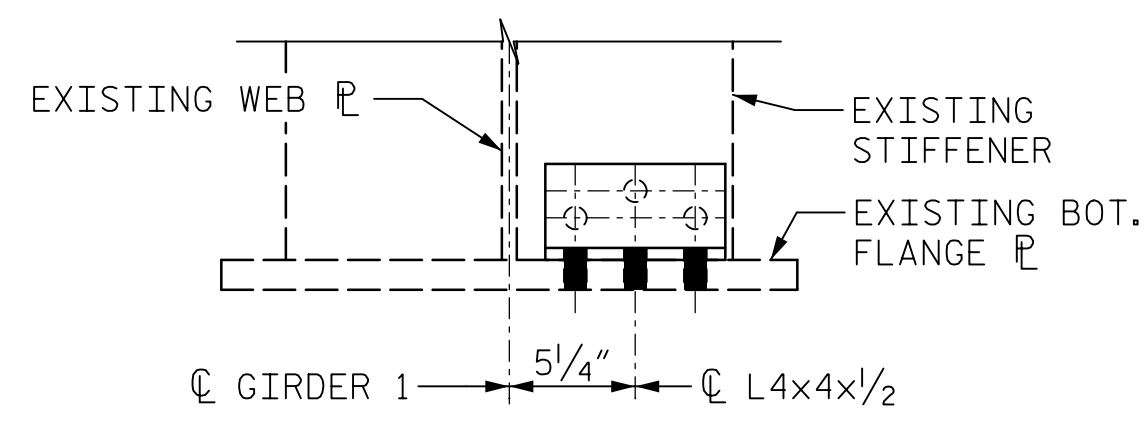
WEB GAP DETAIL Q



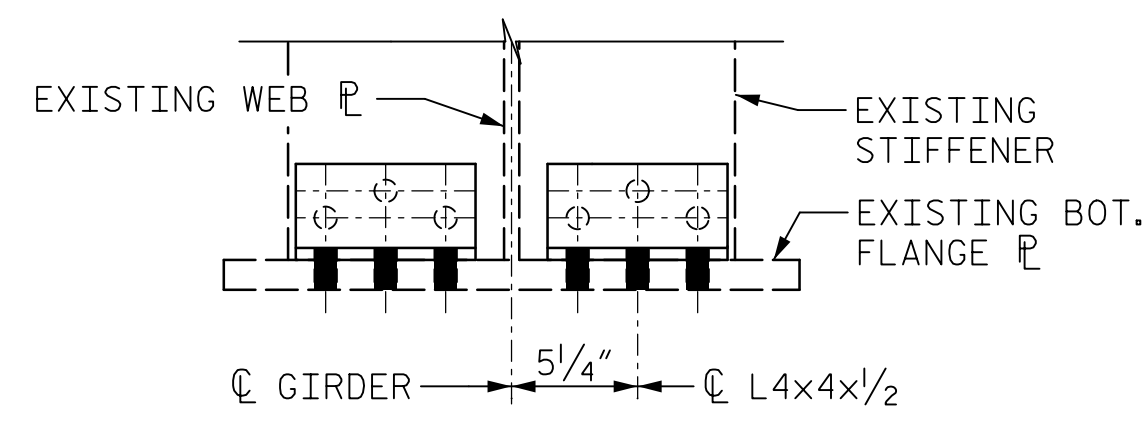
WEB GAP DETAIL S



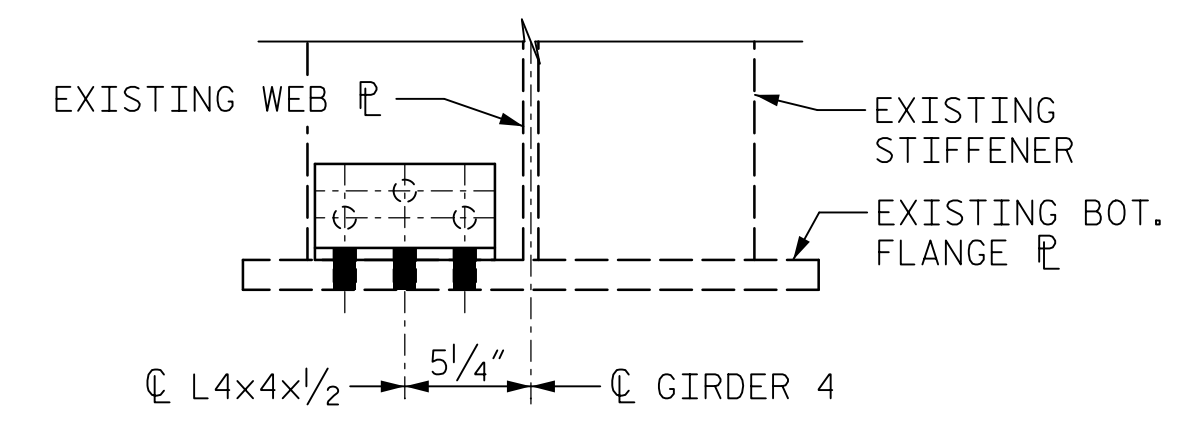
WEB GAP DETAIL U



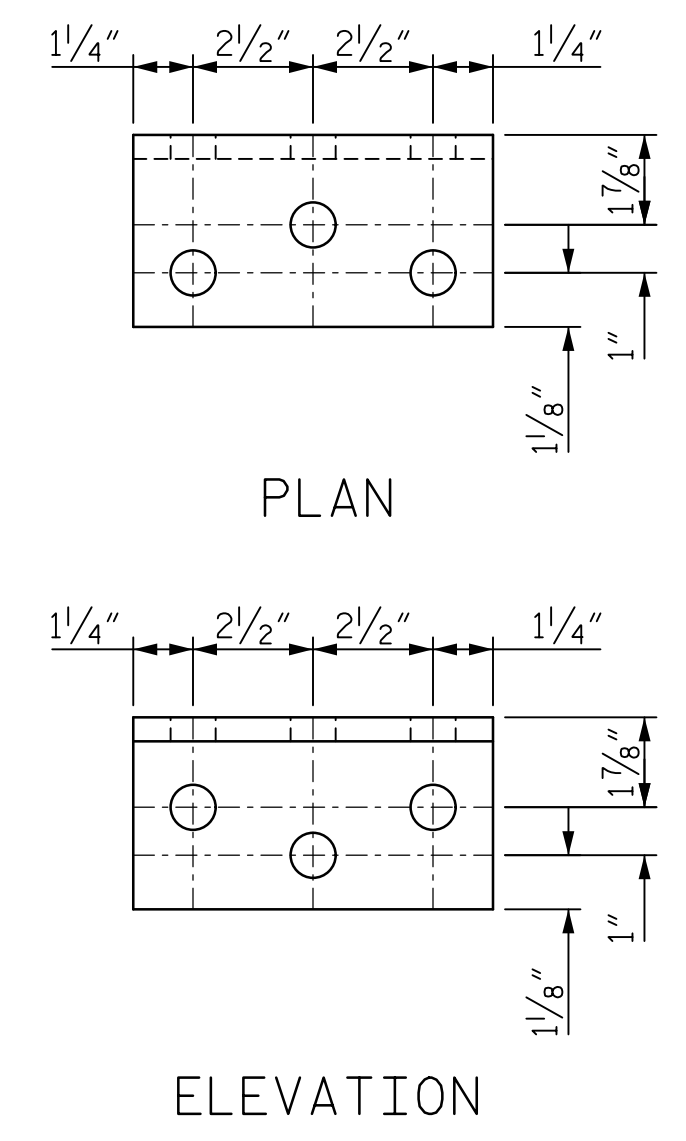
WEB GAP DETAIL R



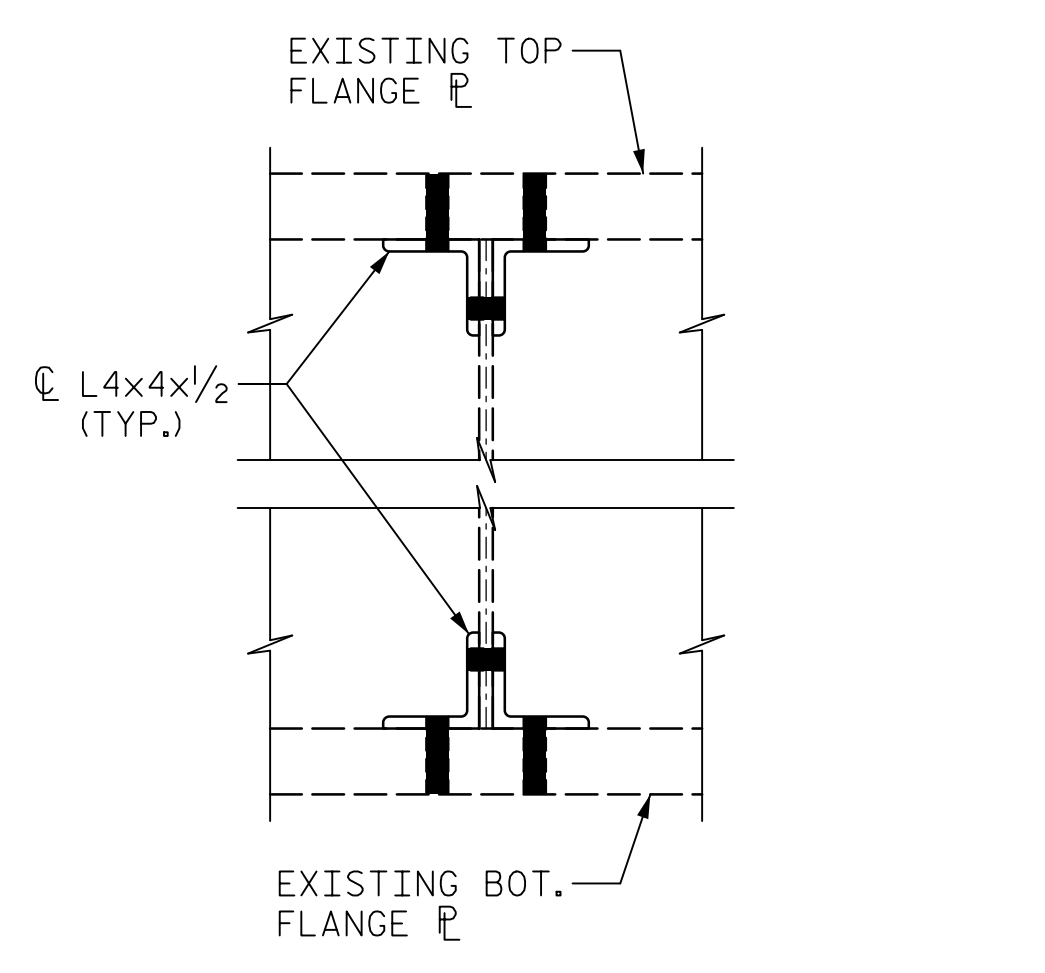
WEB GAP DETAIL T



WEB GAP DETAIL V



L4x4x1/2 DETAIL



SECTION THRU L4x4x1/2

NOTES:

ALL WEB GAP DETAILS LOOKING UPSTATION.
THE WEB GAP DETAIL IS A BOLTED ANGLE CONNECTION BETWEEN THE EXISTING STIFFENER AND THE TENSION FLANGE AT CROSSFRAME LOCATIONS. THIS DETAIL SHALL CONNECT EXISTING STIFFENERS AT CROSSFRAMES TO THE FLANGE IN ORDER TO PREVENT DISTORTION INDUCED FATIGUE. THE EXISTING CROSSFRAME STIFFENERS ARE ALREADY WELDED TO THE COMPRESSION FLANGE. THE WEB GAP DETAIL SHALL CONNECT THE CROSSFRAME STIFFENER TO THE TENSION FLANGE.

CROSSFRAME POINT	WEB GAP DETAIL ID LOCATIONS			
	GIRDER 1	GIRDER 2	GIRDER 3	GIRDER 4
A1	Q	S	S	U
A2	R	T	T	V
A3	R	T	T	V
A4	R	T	T	V
A5	Q	S	S	U
1	Q	S	S	U
2	R	T	T	V
3	R	T	T	V
4	R	T	T	V
5	R	T	T	V
6	R	T	T	V
7	R	T	T	V
8	R	T	T	V
9	Q	S	S	U
10	Q	S	S	U
11	Q	S	S	U
12	Q	S	S	U
13	Q	S	S	U
14	Q	S	S	U
15	Q	S	S	U
16	R	T	T	V
17	R	T	T	V
18	R	T	T	V
19	R	T	T	V
20	R	T	T	V
21	R	T	T	V
22	R	T	T	V
23	Q	S	S	U
24	Q	S	S	U
25	Q	S	S	U
26	Q	S	S	U
27	Q	S	S	U
28	Q	S	S	U
29	Q	S	S	U
30	R	T	T	V
31	R	T	T	V
32	R	T	T	V
33	R	T	T	V
34	R	T	T	V
35	R	T	T	V
36	R	T	T	V
37	Q	S	S	U
E1	Q	S	S	U
E2	R	T	T	V
E3	R	T	T	V
E4	R	T	T	V
E5	Q	S	S	U

PROJECT NO. 15BPR.20
 HENDERSON COUNTY
 STATION: 35+30.22 -L-

SHEET 1 OF 4

STATE OF NORTH CAROLINA
 DEPARTMENT OF TRANSPORTATION
 RALEIGH
 SUPERSTRUCTURE

STRUCTURAL STEEL
 WEB GAP RETROFIT
 DETAILS

REVISIONS						SHEET NO. S-70
NO.	BY:	DATE:	NO.	BY:	DATE:	
1			3			TOTAL SHEETS 129
2			4			

DRAWN BY : S.G. STREDNAK DATE : 01/2019
 CHECKED BY : J.E. SLOAN DATE : 01/2019
 DESIGNED BY : D.S. TUTTLE DATE : 01/2019
 DESIGN CHECKED BY : J. LIU DATE : 01/2019

DOCUMENT NOT CONSIDERED
 FINAL UNLESS ALL
 SIGNATURES COMPLETED