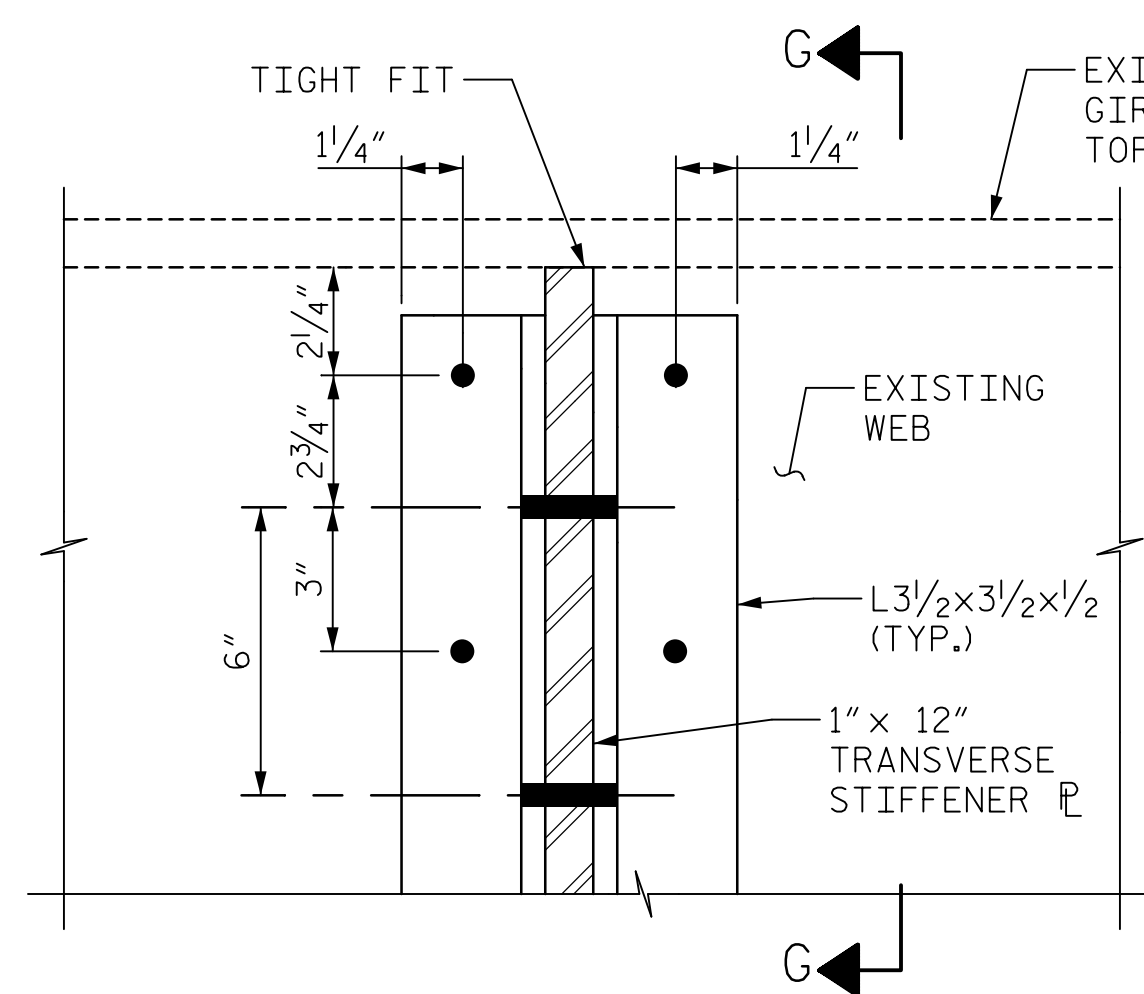
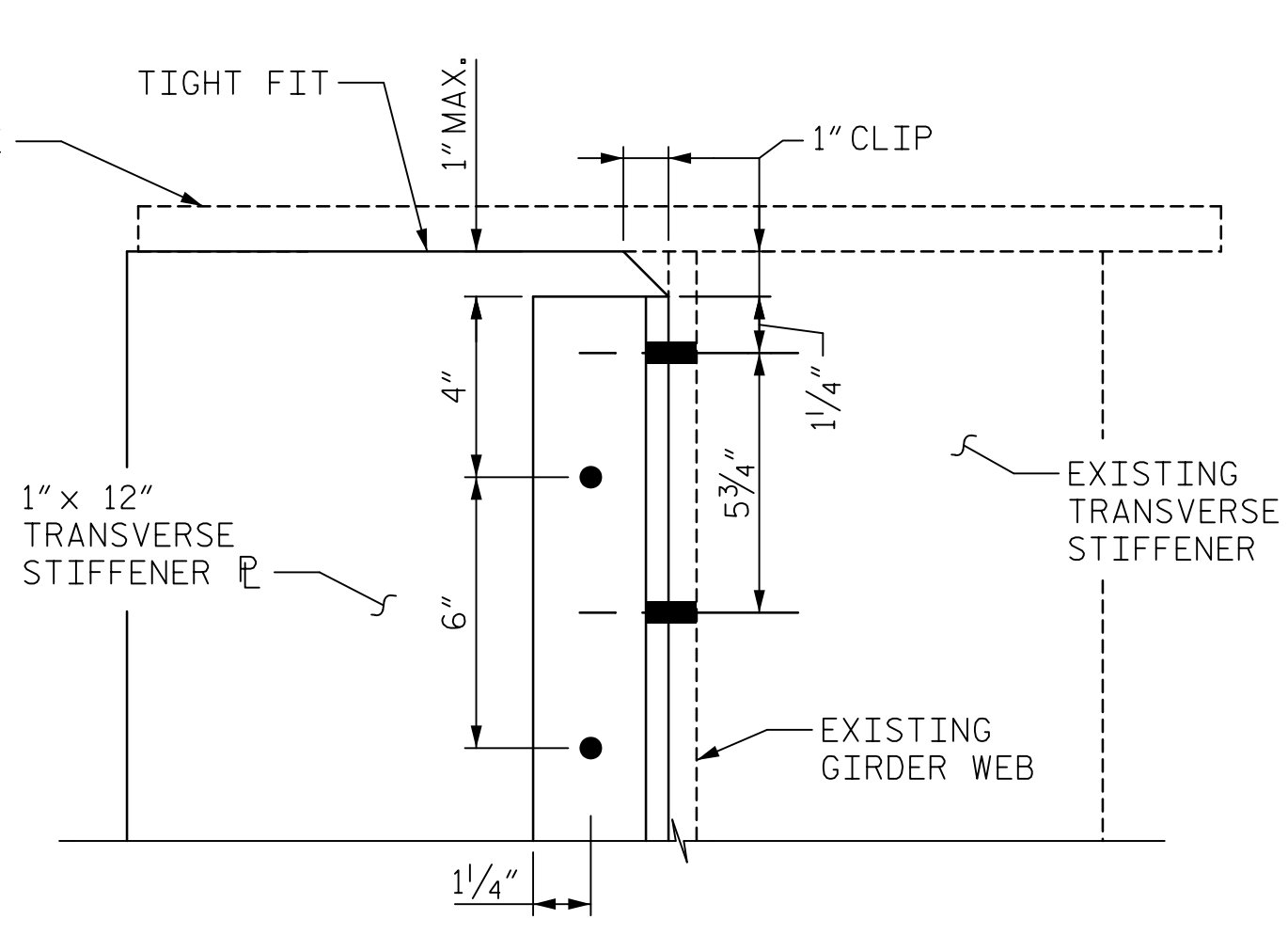


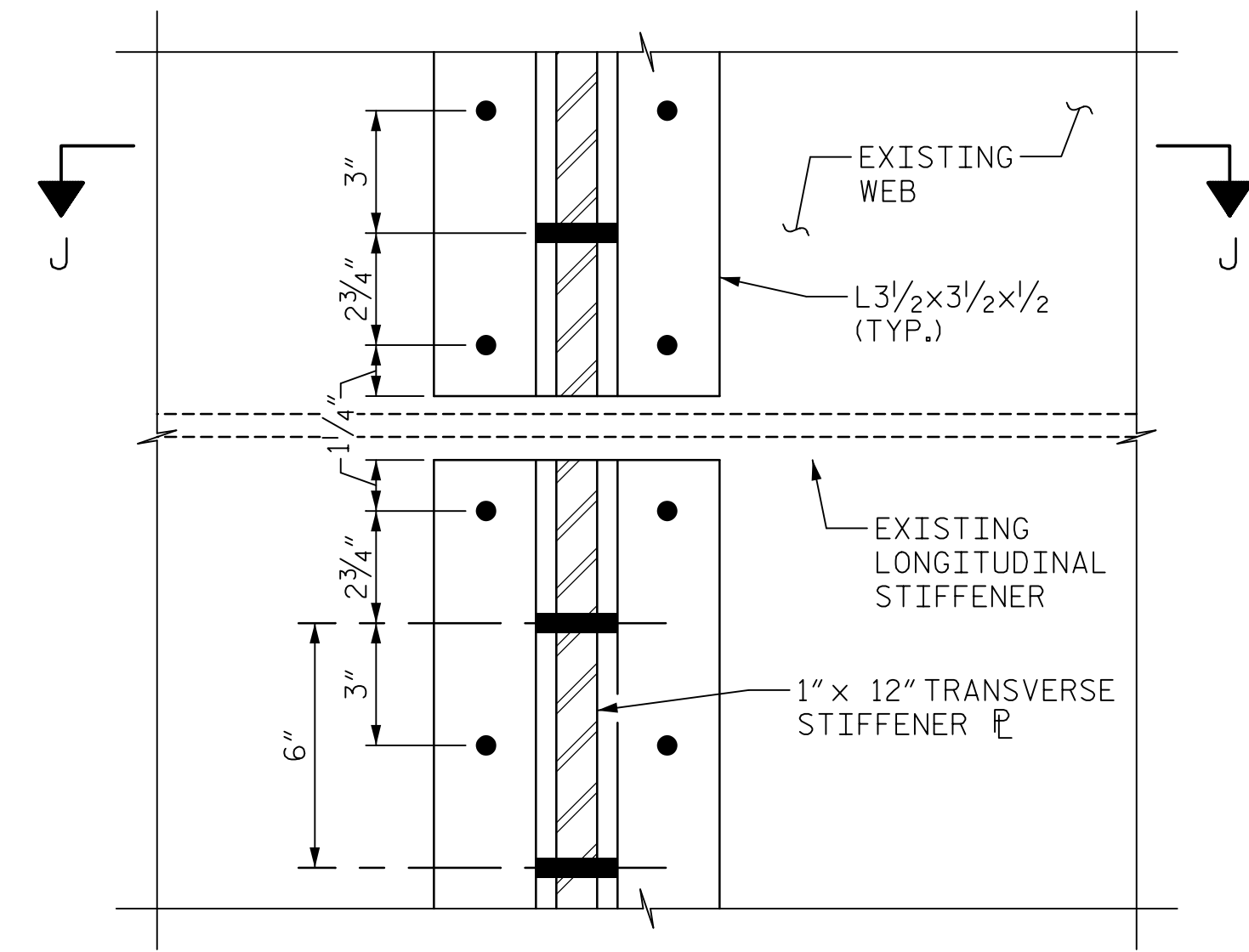
DATE: 2/27/2020
TIME: 3:28:55 PM



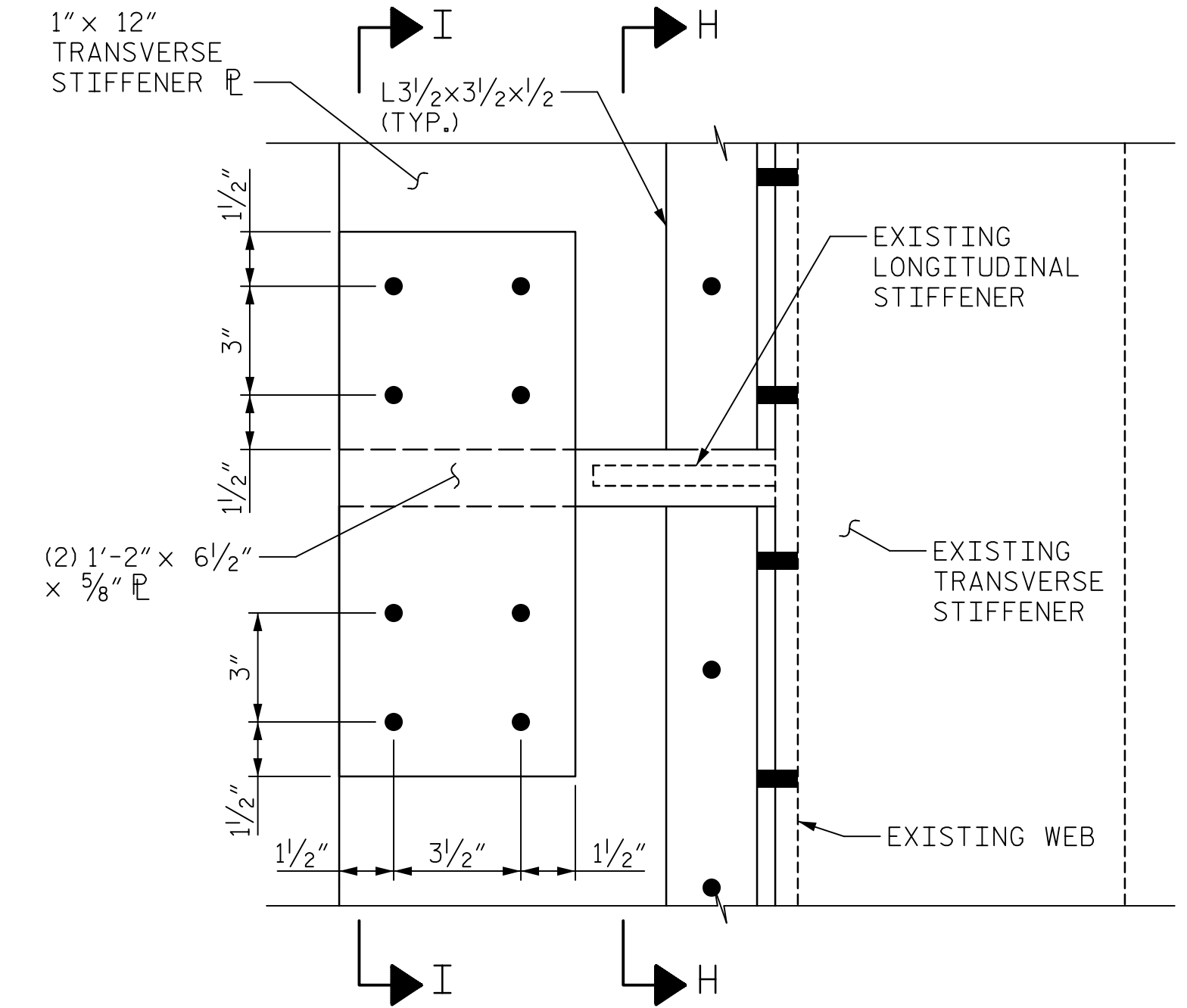
DETAIL E
(APPLIES TO TYPE 2A, 2B & 2C)



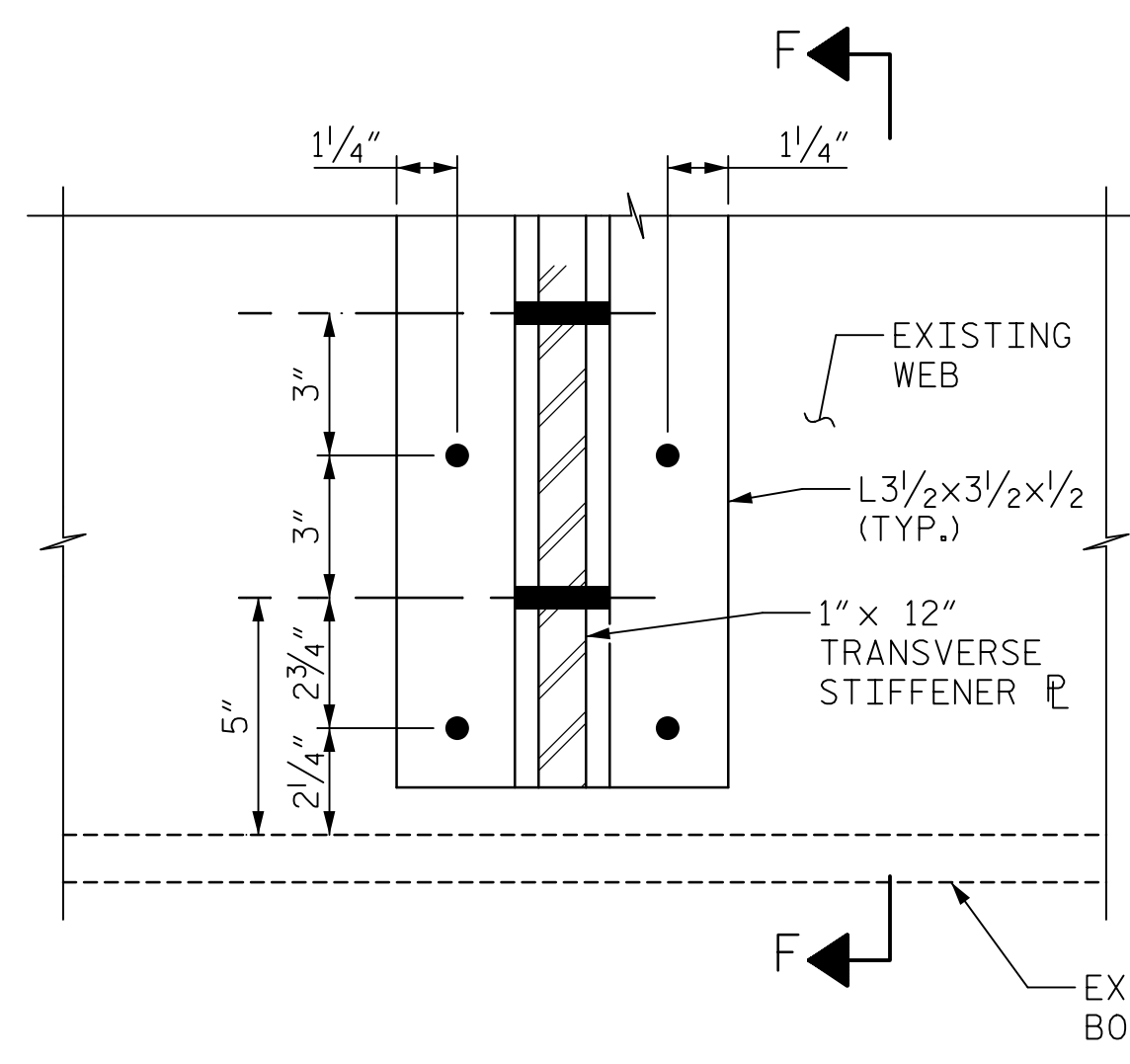
SECTION G-G



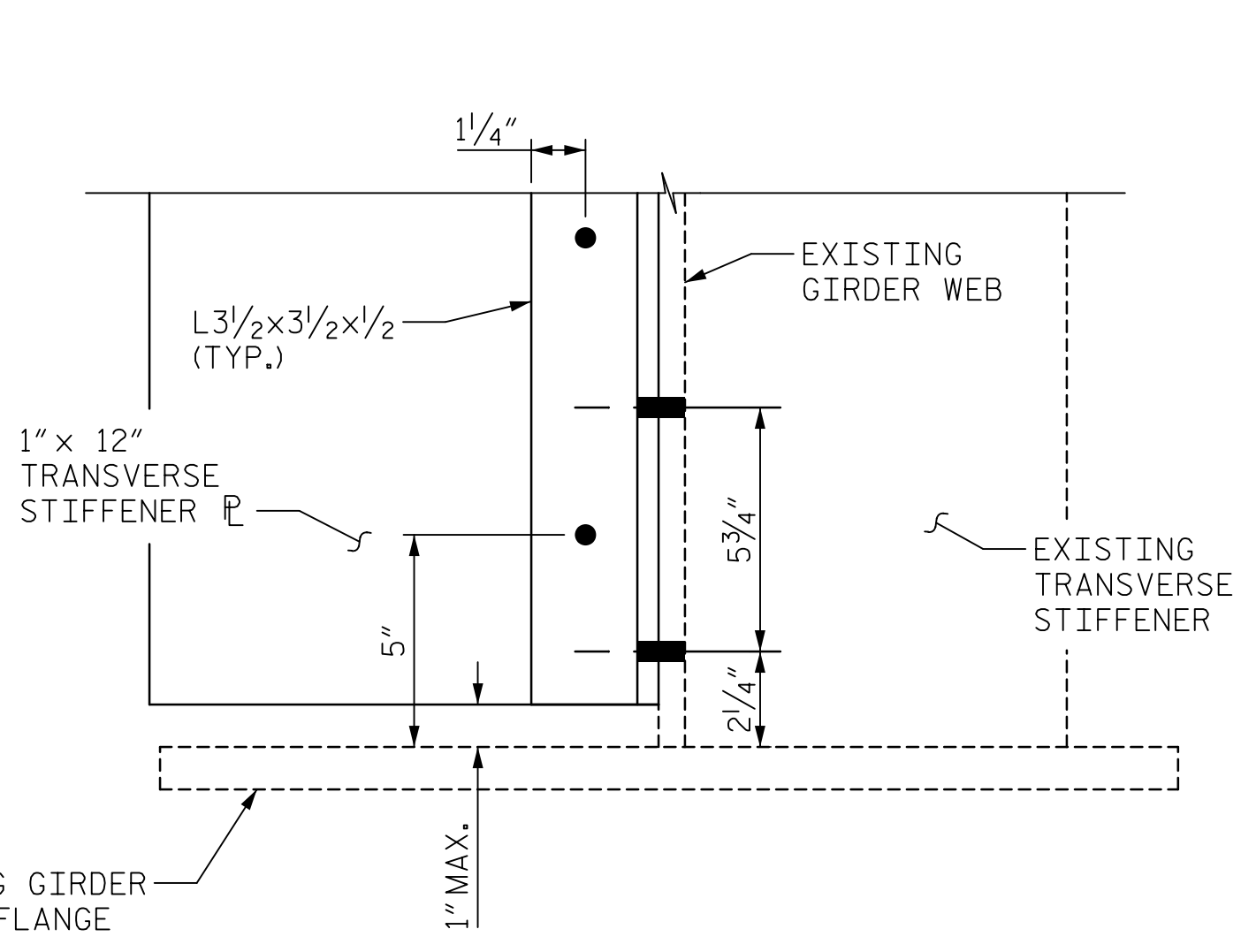
VIEW H-H



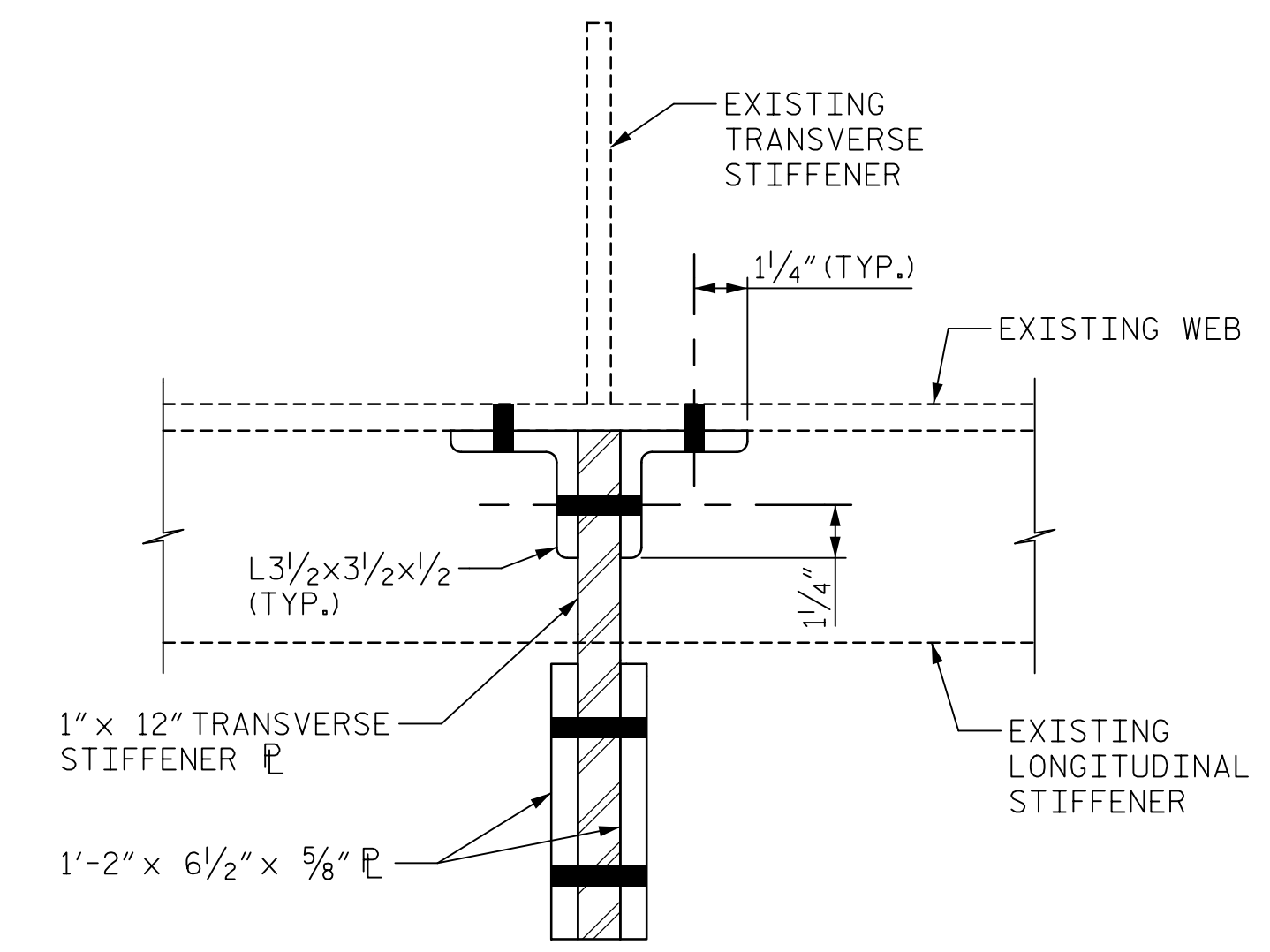
GIRDER SECTION VIEW



DETAIL G
(APPLIES TO TYPE 2A & 2B)

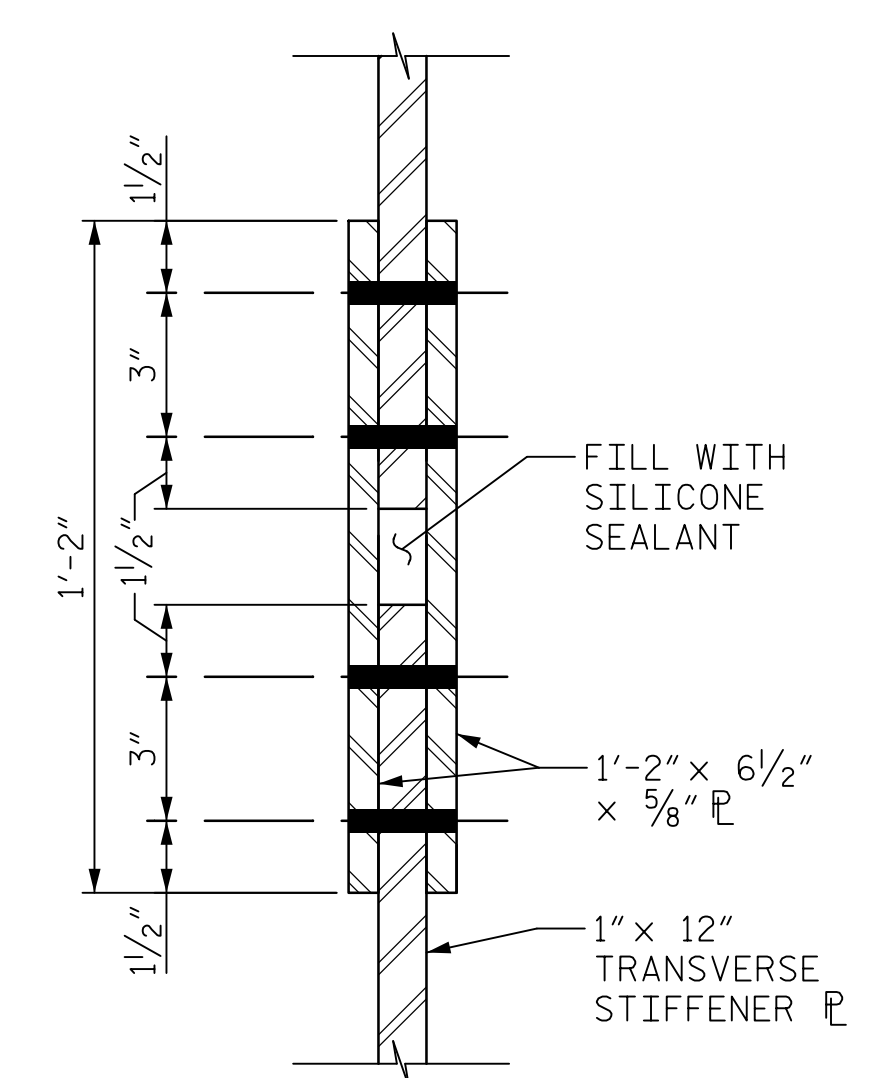


SECTION F-F



SECTION J-J

DETAIL F
(APPLIES TO TYPE 2A)



VIEW I-I

APPLICABLE DETAILS			
STIFFENER TYPE	CONNECTION DETAIL LOCATION		
	TOP FLANGE	STIFFENER	BOT FLANGE
2A	E	F	G
2B	E	J	G
2C	E	J	M
2D	L	J	M

TYPE 2 12"x1" TRANSVERSE STIFFENER PL DESCRIPTIONS:

- 2A TRANSVERSE STIFFENER IN SPANS A AND E COINCIDING WITH A TOP LONGITUDINAL STIFFENER
- 2B TRANSVERSE STIFFENER IN SPANS B-D COINCIDING WITH A TOP LONGITUDINAL STIFFENER
- 2C TRANSVERSE STIFFENER IN SPANS B-D COINCIDING WITH TOP AND BOTTOM LONGITUDINAL STIFFENERS
- 2D TRANSVERSE STIFFENER IN SPANS B-D COINCIDING WITH A BOTTOM LONGITUDINAL STIFFENER

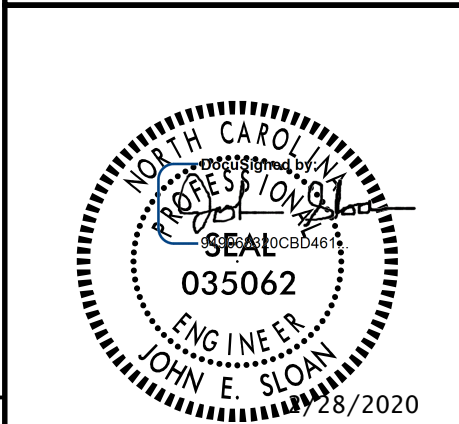
NOTES:
L3/2X3/2X1/2 SHALL BE BOLTED TO THE WEB AND THE STIFFENER ALONG THE FULL HEIGHT WITH A MAXIMUM SPACING OF 6". BOLTS CONNECTING TO THE WEB AND STIFFENER SHALL ALTERNATE AT 3" SPACING.

DRAWN BY : S.G. STREDAK DATE : 03/2019
 CHECKED BY : J.E. SLOAN DATE : 03/2019
 DESIGNED BY : J.E. SLOAN DATE : 03/2019
 DESIGN CHECKED BY : J. LIU DATE : 03/2019

DOCUMENT NOT CONSIDERED FINAL UNLESS ALL SIGNATURES COMPLETED

PROJECT NO. 15BPR.20
HENDERSON COUNTY
 STATION: 35+30.22 -L-

SHEET 1 OF 2



STATE OF NORTH CAROLINA
 DEPARTMENT OF TRANSPORTATION
 RALEIGH
 SUPERSTRUCTURE
TYPE 2 TRANSVERSE STIFFENERS

REVISIONS						SHEET NO. S-68 TOTAL SHEETS 129
NO.	BY:	DATE:	NO.	BY:	DATE:	
1			3			
2			4			

USER: Merit Research
 DGN: R:\Structures\04 Drawings\40131_15BPR.20_SML_02.dgn