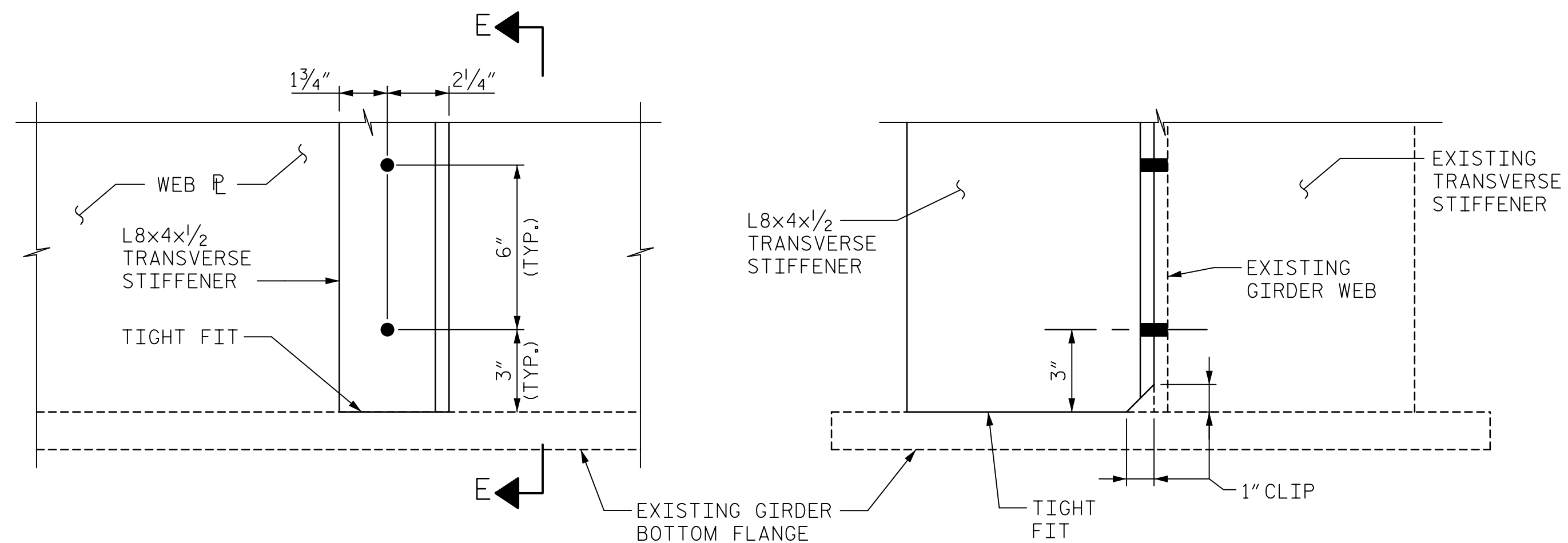
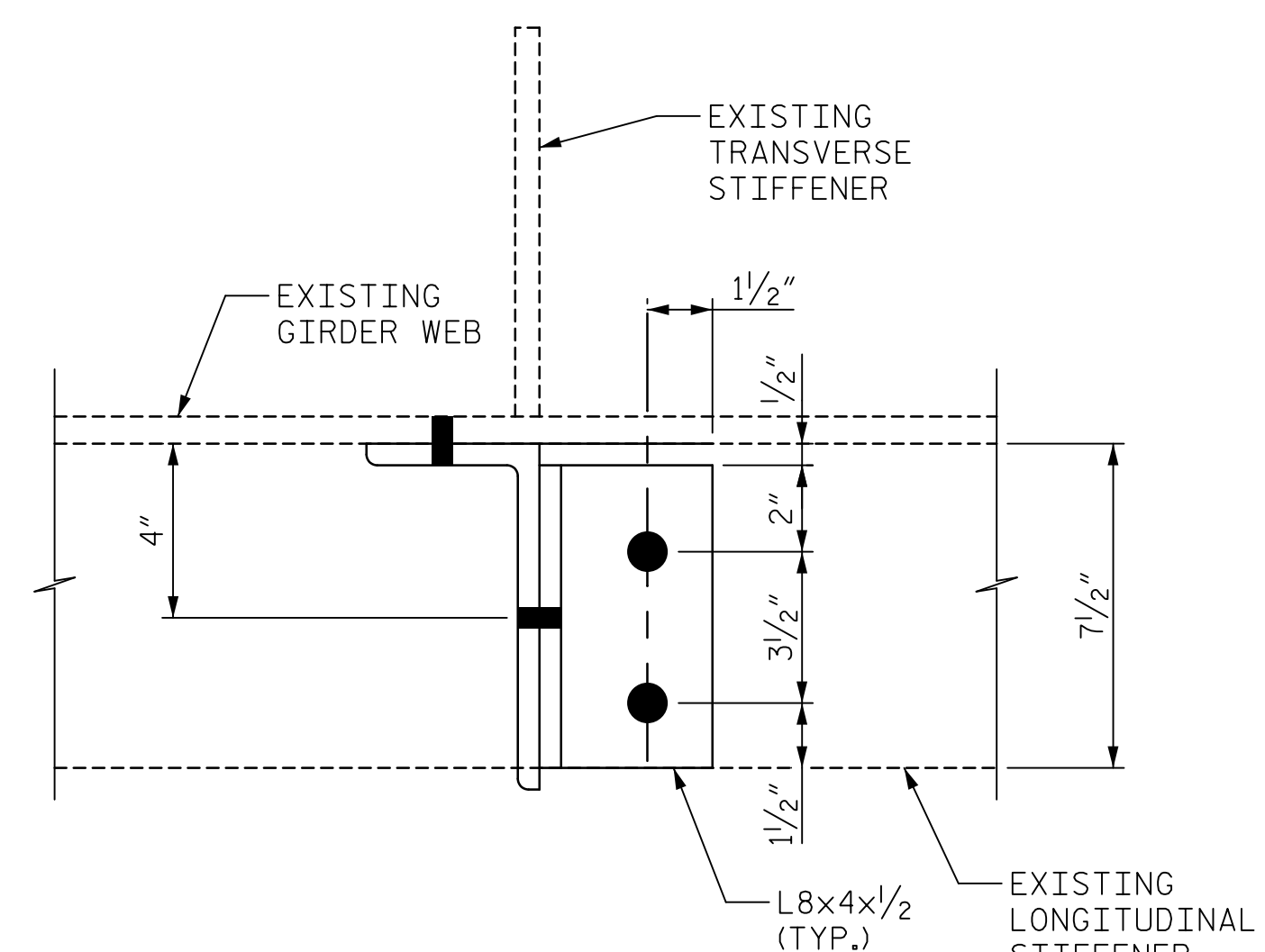
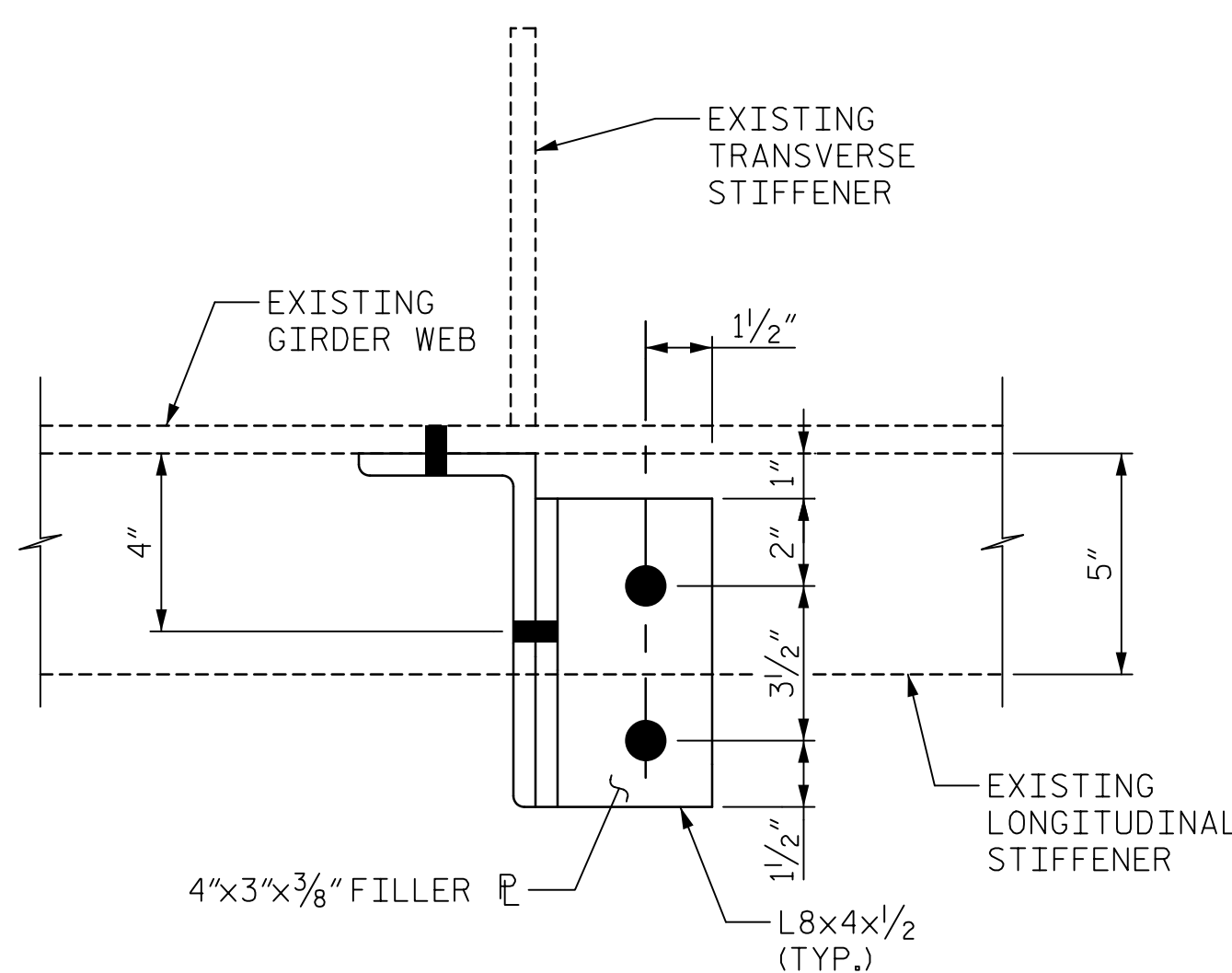
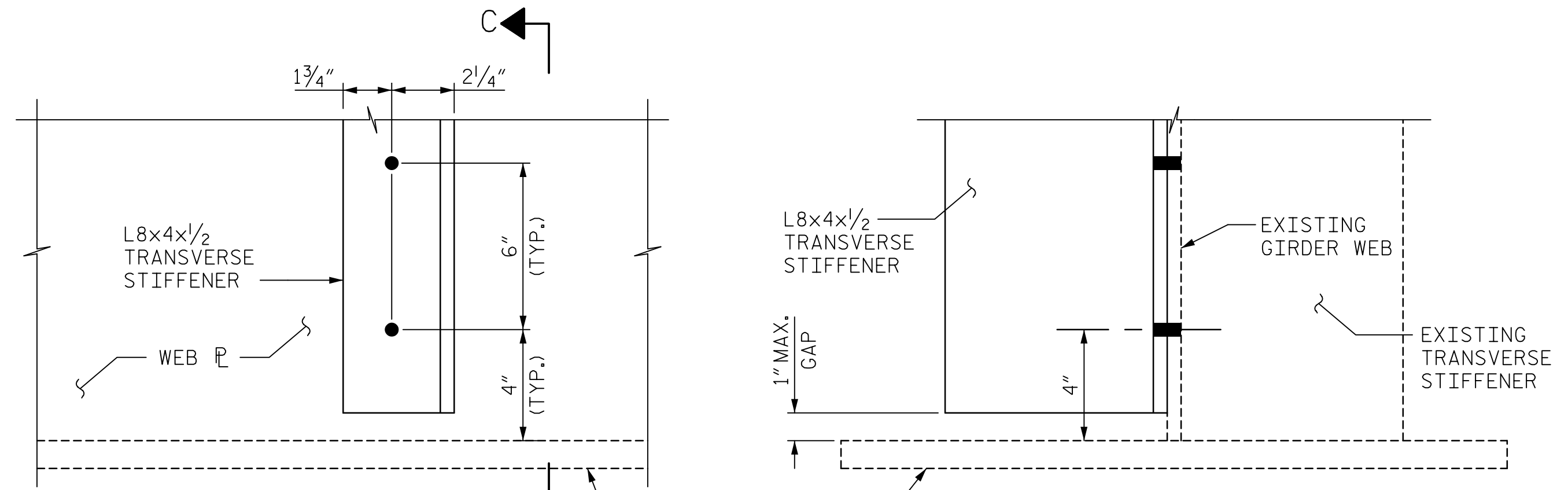
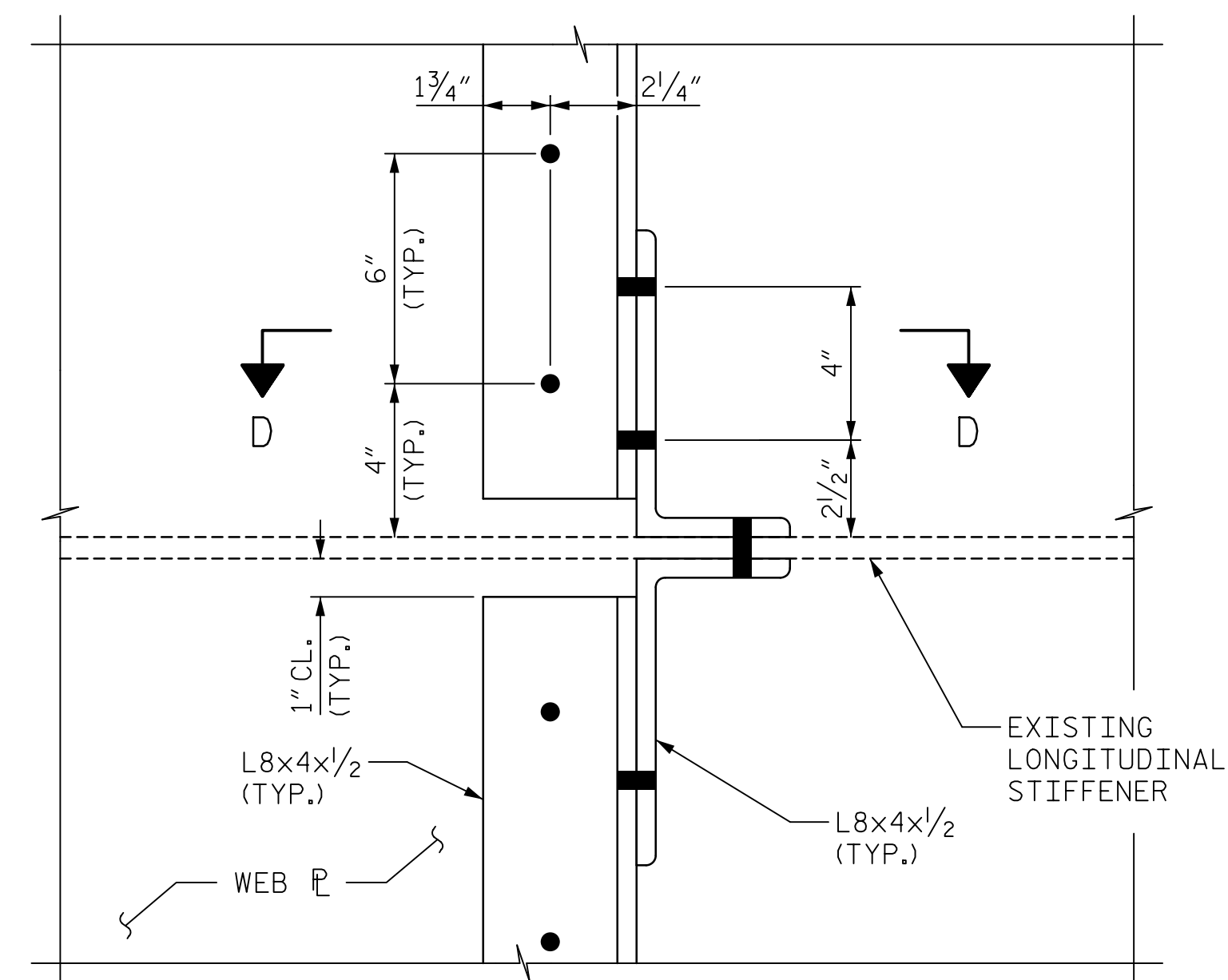
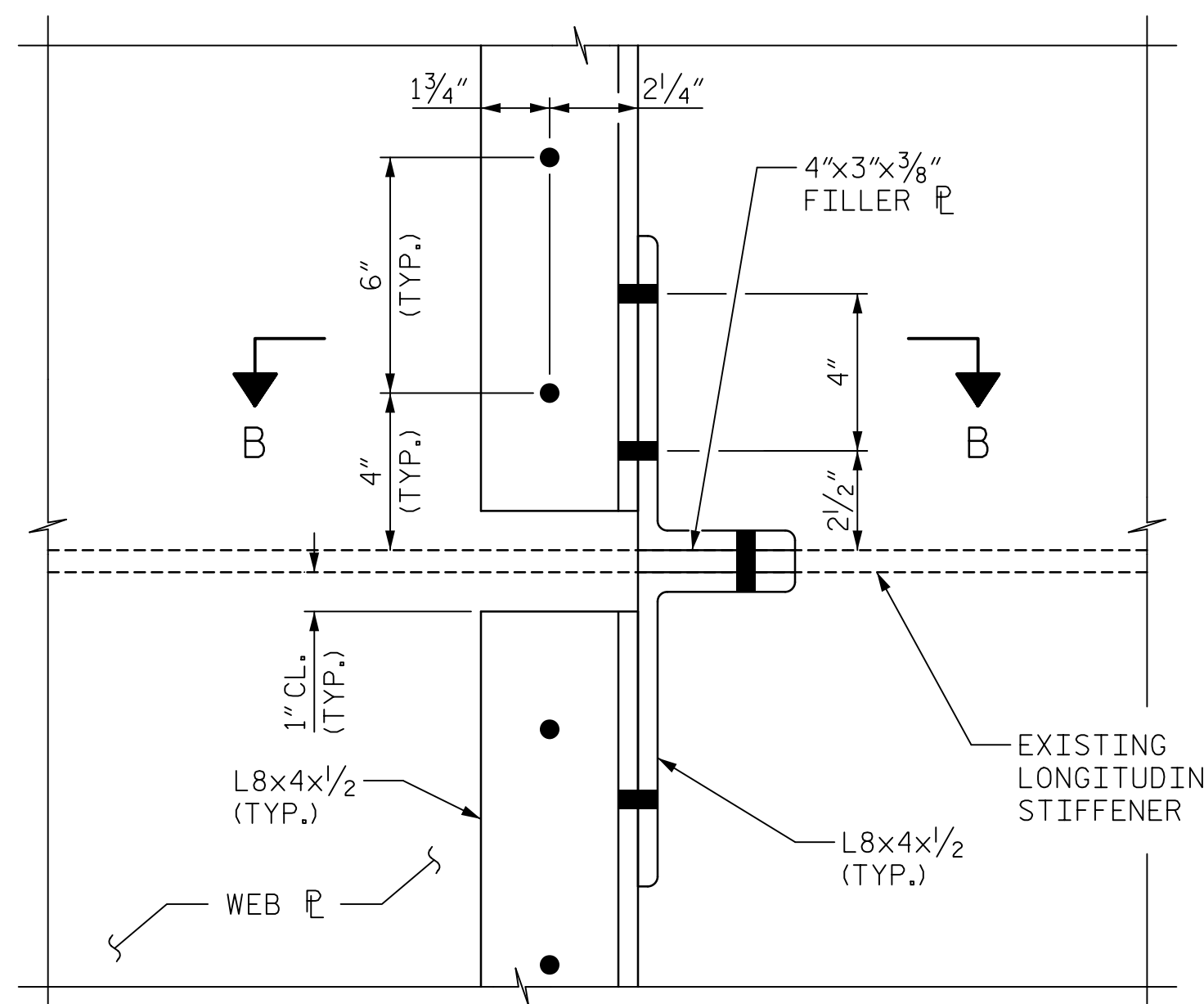
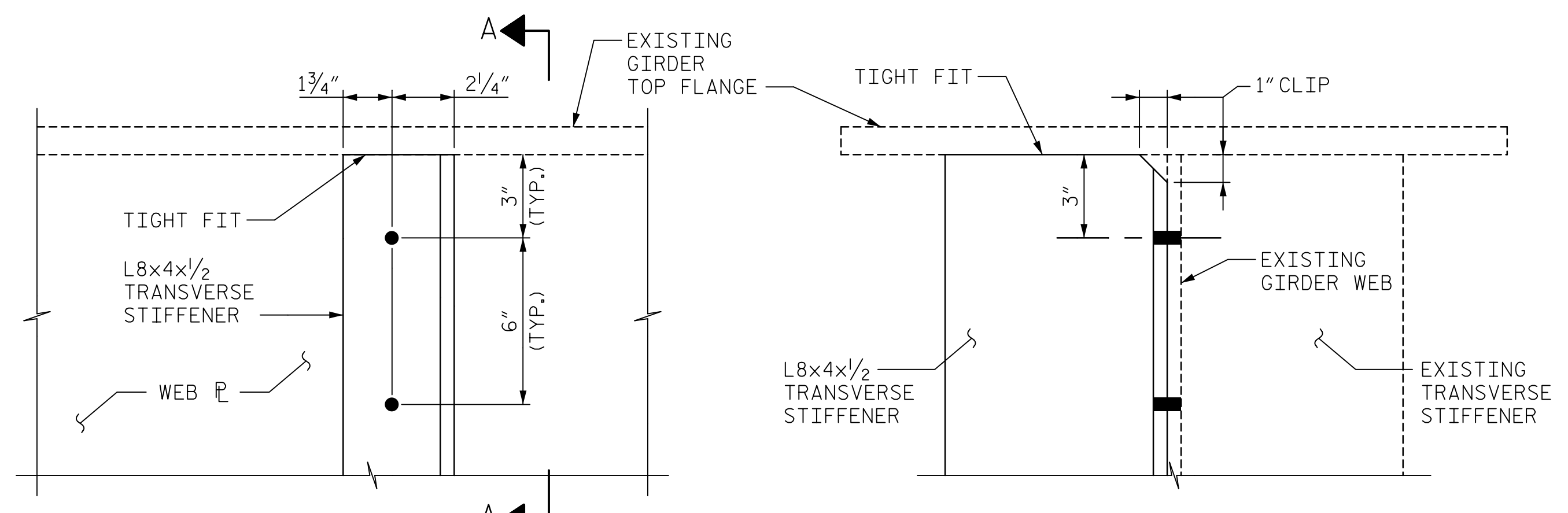


DATE: 2/27/2020  
TIME: 3:28:57 PM



APPLICABLE DETAILS			
STIFFENER TYPE	CONNECTION DETAIL LOCATION		
	TOP FLANGE	STIFFENER	BOT FLANGE
1A	B	C	D
1B	B	I	D
1C	B	I	K

PROJECT NO. 15BPR.20  
HENDERSON COUNTY  
 STATION: 35+30.22 -L-

**NOTE:**  
 STIFFENERS SHALL BE BOLTED TO THE WEB ALONG THE FULL HEIGHT WITH A MAXIMUM SPACING OF 6".

**TYPE 1 L8X4X1/2 TRANSVERSE STIFFENER DESCRIPTIONS:**

- 1A TRANSVERSE STIFFENER IN SPANS A AND E COINCIDING WITH A TOP LONGITUDINAL STIFFENER
- 1B TRANSVERSE STIFFENER IN SPANS B-D COINCIDING WITH A TOP LONGITUDINAL STIFFENER
- 1C TRANSVERSE STIFFENER IN SPANS B-D COINCIDING WITH TOP AND BOTTOM LONGITUDINAL STIFFENERS



STATE OF NORTH CAROLINA  
 DEPARTMENT OF TRANSPORTATION  
 RALEIGH  
 SUPERSTRUCTURE  
**TYPE 1 TRANSVERSE STIFFENERS**

DRAWN BY : S.G. STREDNAK  
 CHECKED BY : J.E. SLOAN  
 DESIGNED BY : J.E. SLOAN  
 DESIGN CHECKED BY : J. LIU

DATE : 03/2019  
 DATE : 03/2019  
 DATE : 03/2019  
 DATE : 03/2019

DOCUMENT NOT CONSIDERED FINAL UNLESS ALL SIGNATURES COMPLETED

REVISIONS						SHEET NO. S-67
NO.	BY:	DATE:	NO.	BY:	DATE:	
1			3			TOTAL SHEETS 129
2			4			

USER: Merch Research  
 DGN: R:\Structures\04 Drawings\01\_129\_15BPR20\_SMLU.Gn