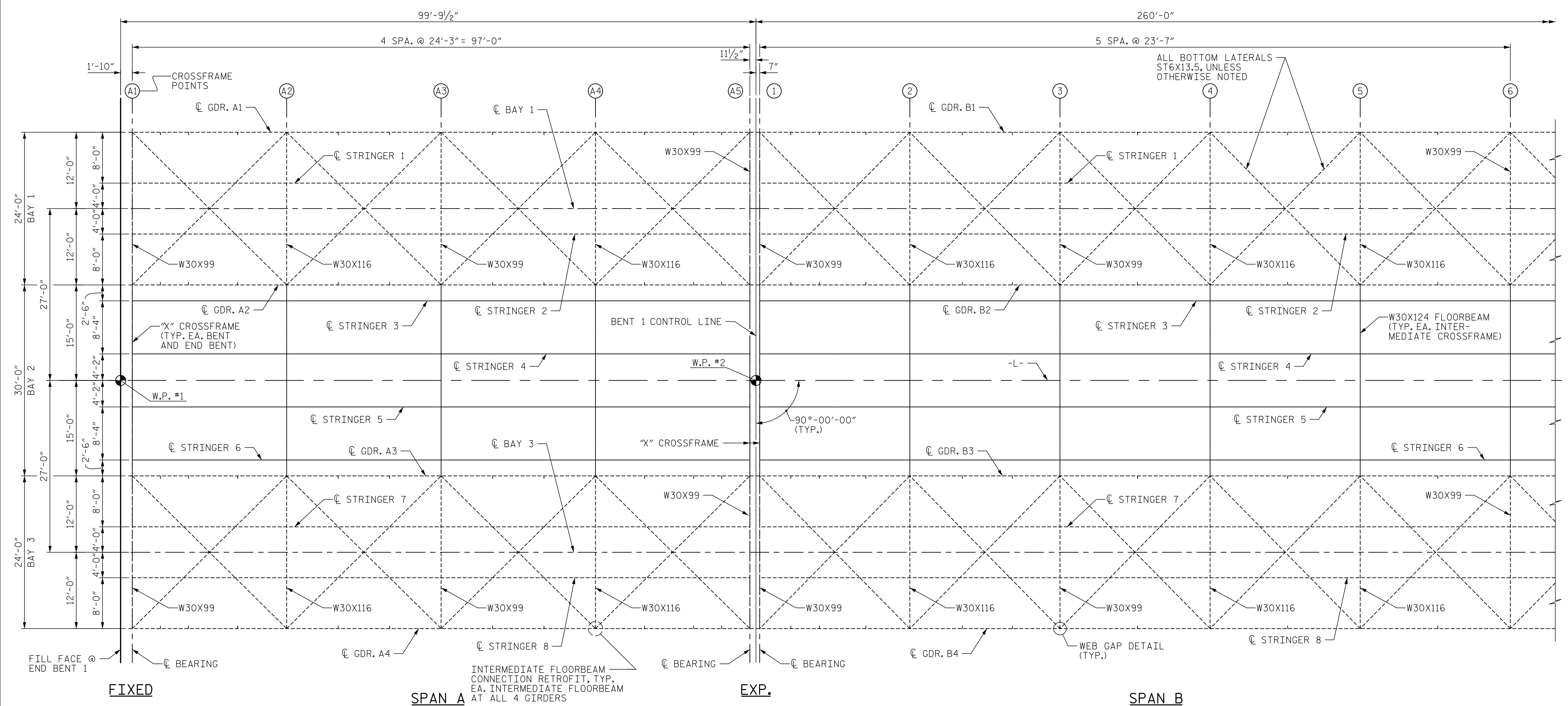


DATE: 2/27/2020
TIME: 3:25:57 PM



NOTES:

PROPOSED STRINGERS IN BAY 2 SHALL BE 3 SPAN CONTINUOUS BETWEEN CROSSFRAME POINTS 1-4 AND 34-37. ALL OTHER STRINGERS SHALL BE 2 SPAN CONTINUOUS. PROPOSED STRINGERS IN BAY 2 SHALL BE W27X84.

EXISTING STRINGERS IN BAYS 1 AND 3 SHALL HAVE SHEAR STUDS WELDED TO THE TOP FLANGE. FOR DETAILS, SEE "FLOORBEAM AND STRINGER DETAILS" SHEET.

FOR X CROSSFRAME DETAILS, SEE "BAY 2 'X' CROSSFRAME DETAILS" SHEETS.

FOR W30X124 FLOORBEAMS AT INTERMEDIATE CROSSFRAMES, SEE "BAY 2 FLOORBEAM CONNECTION DETAILS" SHEET.

FOR INTERMEDIATE FLOORBEAM CONNECTION RETROFIT IN BAYS 1 AND 3, SEE "FLOORBEAM CONNECTION RETROFIT DETAILS" SHEET.

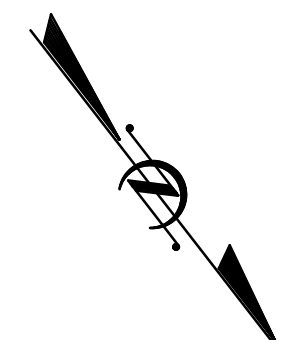
FOR GIRDER DETAILS INCLUDING ADDITIONAL STIFFENERS, SPLICE PLATES, COVER PLATES, SHEAR STUDS, AND WEB GAP DETAILS, SEE GIRDER ELEVATION SHEETS.

FOR STRUCTURAL STEEL REPAIRS, SEE "STRUCTURAL STEEL REPAIRS" SHEETS. FOR BEARING REPAIRS, SEE "BEARING REPAIRS" SHEETS.

BAY 2 CATWALKS NOT SHOWN FOR CLARITY. FOR CATWALK DETAILS, SEE "ACCESS AND FALL PROTECTION" SHEETS.

X CROSSFRAMES SHALL BE INSTALLED ON THE SPAN SIDE OF THE BEARING STIFFENER AT END BENTS 1 AND 2, OPPOSITE FROM THE BACKWALL. X CROSS FRAMES SHALL BE INSTALLED ON THE SPAN SIDE OF THE BEARING STIFFENER AT BENTS 1 AND 4, OPPOSITE FROM THE JOINT.

FRAMING PLAN



PROJECT NO. 15BPR.20
HENDERSON COUNTY
 STATION: 35+30.22 -L-

SHEET 1 OF 5



STATE OF NORTH CAROLINA
 DEPARTMENT OF TRANSPORTATION
 RALEIGH

SUPERSTRUCTURE
 FRAMING PLAN



DRAWN BY : M. TOM	DATE : 11/2018
CHECKED BY : J. SLOAN	DATE : 11/2018
DESIGNED BY : N. BROWN/D. TUTTLE	DATE : 12/2018
DESIGN CHECKED BY : J. LIU/J. SLOAN	DATE : 12/2018

DOCUMENT NOT CONSIDERED
 FINAL UNLESS ALL
 SIGNATURES COMPLETED

REVISIONS						SHEET NO.
NO.	BY:	DATE:	NO.	BY:	DATE:	S-46
1			3			TOTAL SHEETS
2			4			129