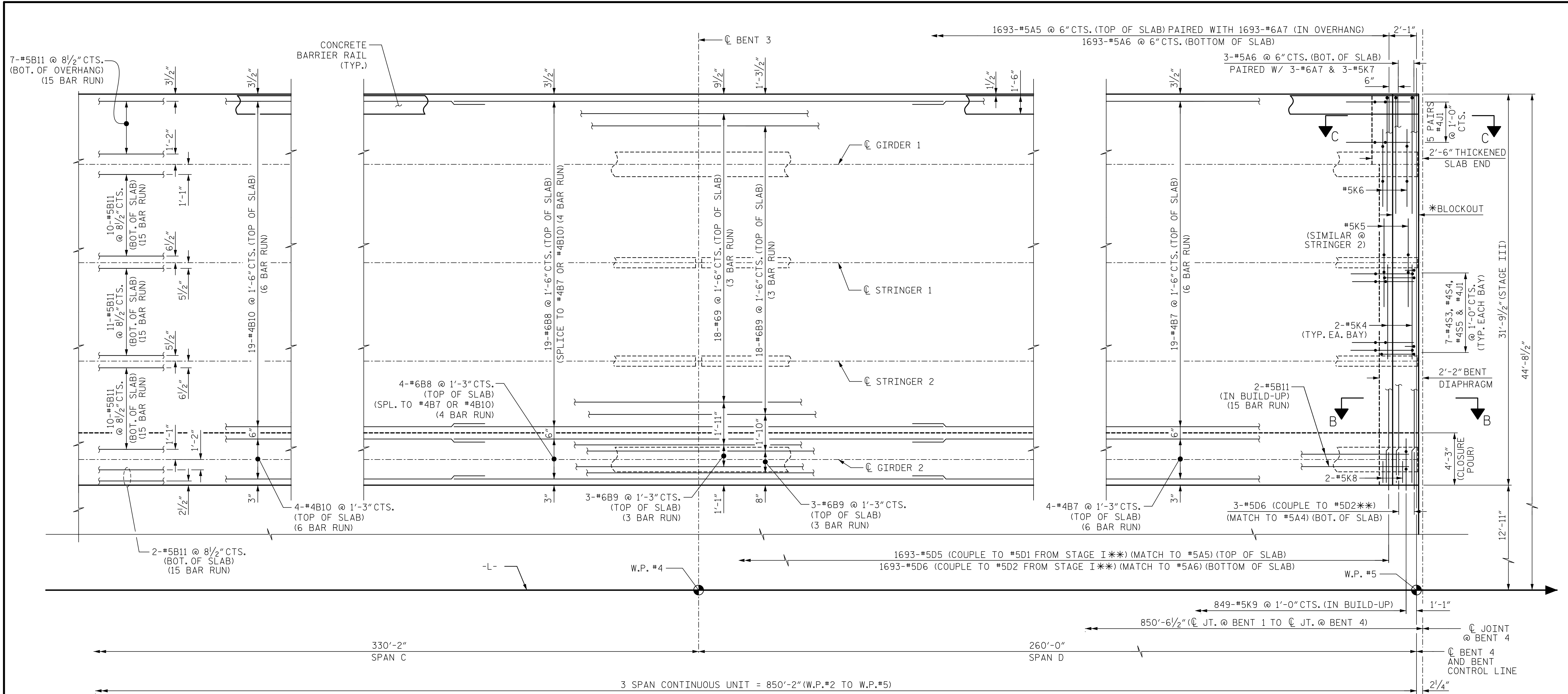


DATE: 2/27/2020 TIME: 3:24:58 PM
USER: Meryl Rosemond DOB: R:\Structures\04 Drawings\401_085_15BPR\20_SMU_S11.dgn



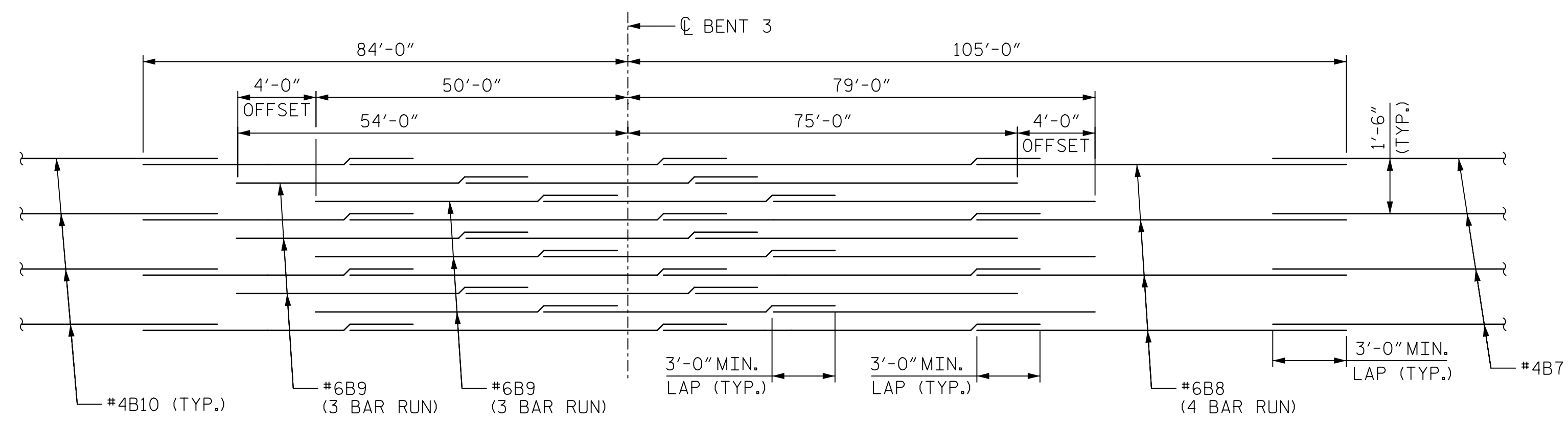
SPAN C

SPAN D

NOTES:

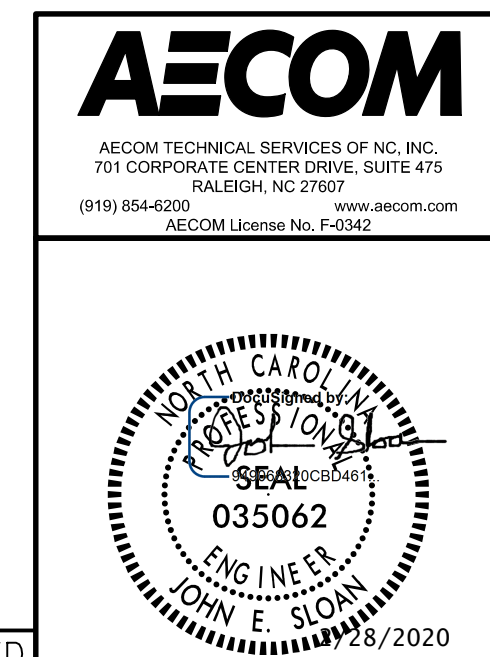
- FOR POURING SEQUENCE AND DIRECTION, AND TRANSVERSE CONTRUCTION JOINT DETAIL AND LOCATION, SEE "POURING SEQUENCE" SHEET.
- INTERMEDIATE STEEL DIAPHRAGMS NOT SHOWN FOR CLARITY, FOR LOCATION, SEE "FRAMING PLAN" SHEETS.
- * FOR BLOCKOUT DIMENSIONS, SEE "MOLDED RUBBER SEGMENTAL EXPANSION JOINT" DETAILS SHEETS.
- ** FOR MECHANICAL COUPLERS FOR STAGED CONSTRUCTION, SEE TYPICAL SECTION SHEETS AND TYPICAL SECTION DETAILS SHEETS.
- FOR BARRIER RAIL REINFORCING NOT SHOWN, SEE "CONCRETE BARRIER RAIL" SHEET.
- FOR DECK DRAIN LOCATIONS, SEE SHEET 13.
- FOR MINIMUM SPLICE LENGTHS, SEE "SUPERSTRUCTURE BILL OF MATERIAL" SHEETS.

PARTIAL PLAN OF SPANS C AND D
FOR LOCATIONS OF #6B8 AND #6B9 SEE LAYOUT DETAIL BELOW



TOP OF SLAB "B" BAR REINFORCEMENT LAYOUT OVER BENT 3

PROJECT NO. 15BPR.20
HENDERSON COUNTY
 STATION: 35+30.22 -L-
 SHEET 11 OF 13



STATE OF NORTH CAROLINA
 DEPARTMENT OF TRANSPORTATION
 RALEIGH
 SUPERSTRUCTURE
 PLAN OF SPANS
 PART SPAN C & SPAN D
 STAGE III

DRAWN BY : M.K. TOM	DATE : 1/2019
CHECKED BY : G.R. COLS	DATE : 1/2019
DESIGNED BY : H.T. ROSEMOND	DATE : 12/2019
DESIGN CHECKED BY : G.R. COLS	DATE : 1/2019

DOCUMENT NOT CONSIDERED FINAL UNLESS ALL SIGNATURES COMPLETED

REVISIONS						SHEET NO.
NO.	BY:	DATE:	NO.	BY:	DATE:	S-43
1			3			TOTAL SHEETS
2			4			129