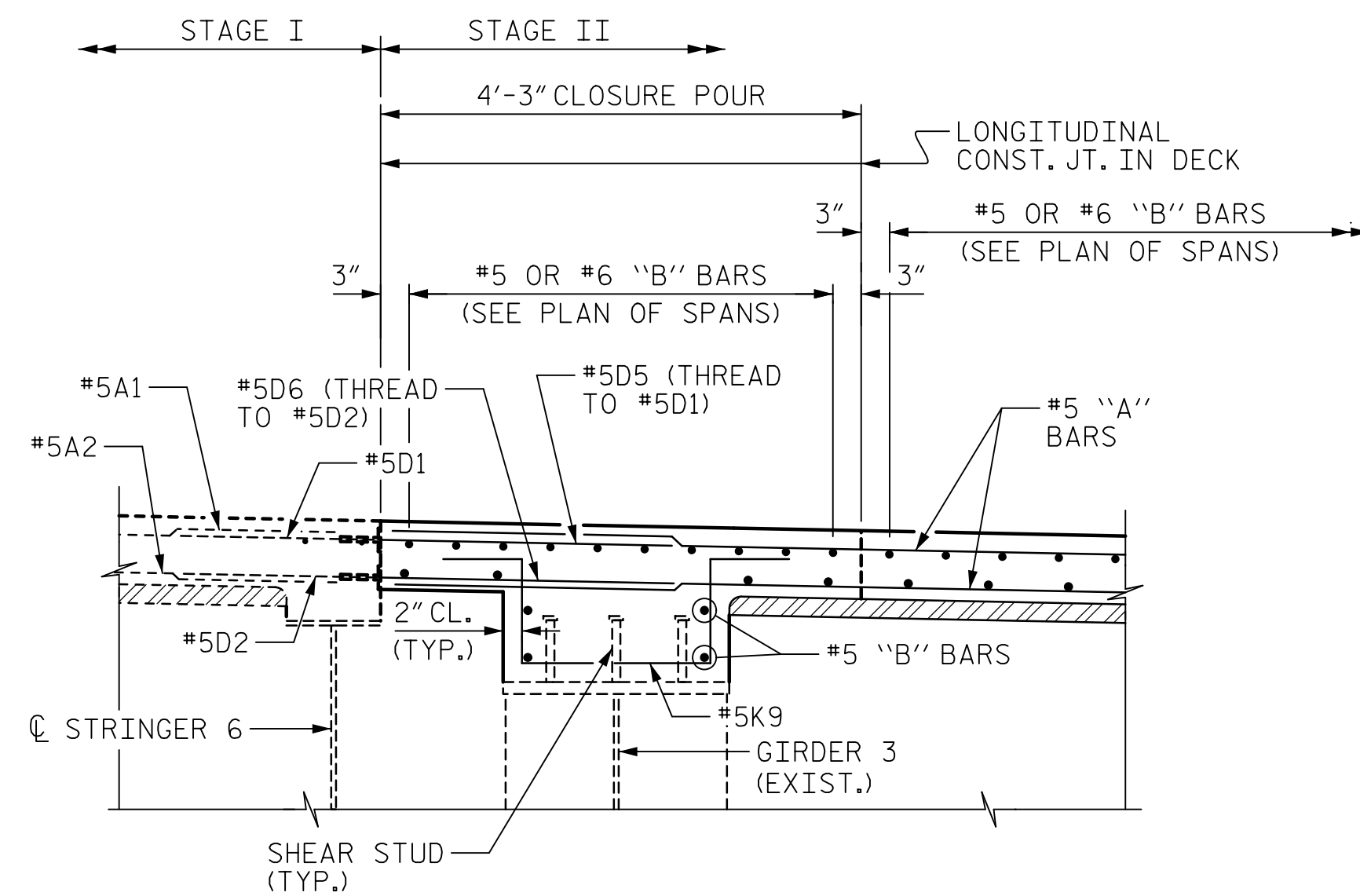


DATE: 2/27/2020  
TIME: 3:20:22 PM



**CLOSURE POUR DETAIL**

FOR BUILDUP HEIGHTS, SEE SHEET 1.  
(SHOWN AT GIRDER 3 FOR STAGE II,  
SIMILAR AT GIRDER 2 IN STAGE III)

**CLOSURE POUR NOTES:**

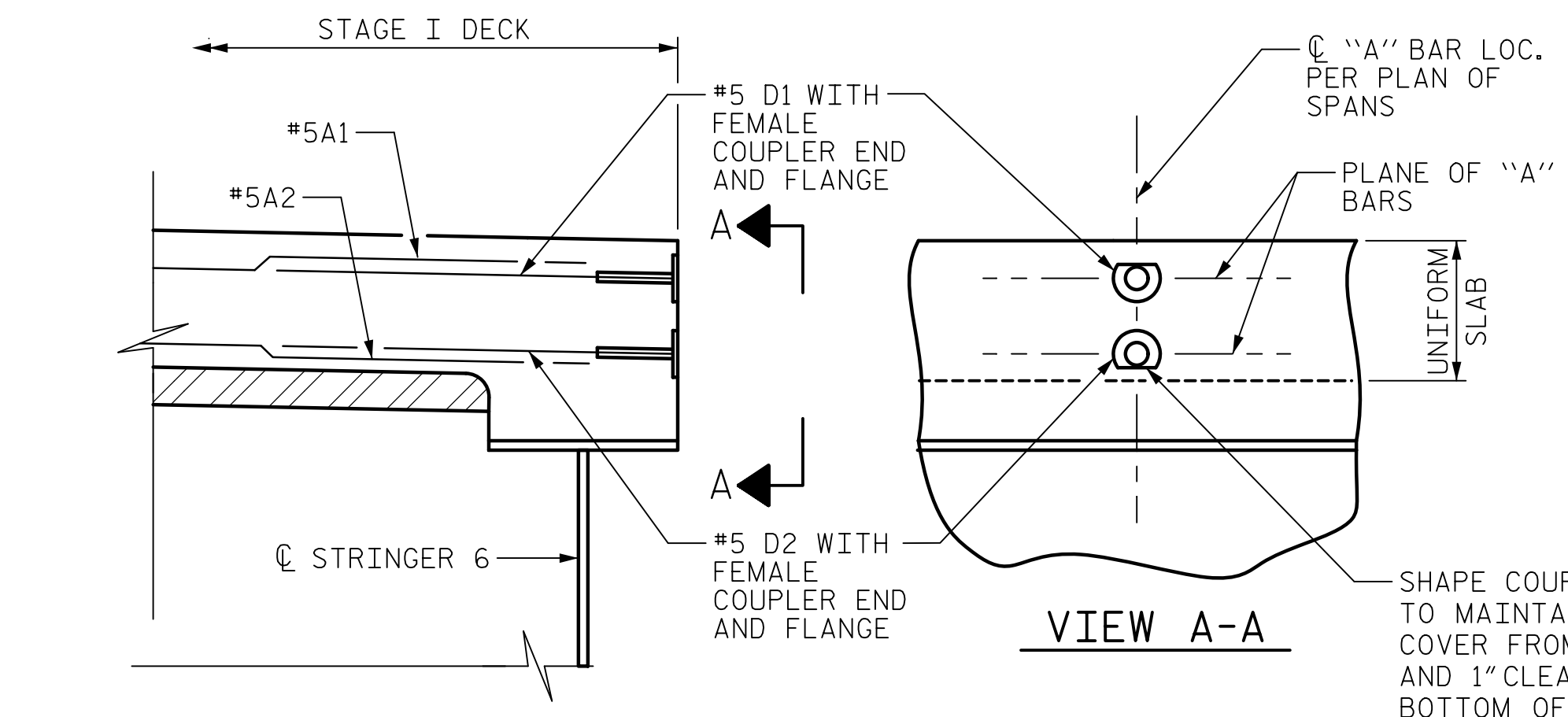
PLACE LONGITUDINAL "B" BARS WITHIN THE CLOSURE POUR AFTER CONCRETE ON BOTH SIDES OF THE CLOSURE POUR HAS ACHIEVED A CONCRETE STRENGTH OF 3 KSI.

KEEP "D" CLOSURE POUR DOWELS AND "A" BARS IN STAGE II OR III FREE OF CONTACT WITH EACH OTHER UNTIL THE CONCRETE ON BOTH SIDES OF THE CLOSURE POUR HAS ACHIEVED A CONCRETE STRENGTH OF 3 KSI.

PRIOR TO PLACING THE CLOSURE POUR CONCRETE, THE "D", "K", AND "A" TRANSVERSE BARS IN THE CLOSURE POUR SHALL BE CONNECTED SECURELY TOGETHER AND CONNECTED SECURELY TO THE LONGITUDINAL "B" BARS.

BEFORE PURCHASING SHEAR STUDS AND BUILDUP REINFORCEMENT #5K9 BARS, CONTRACTOR SHALL EVALUATE THE CAMBER AND DEFLECTIONS OF THE GIRDERS UTILIZING THE AS-SURVEYED GIRDER GEOMETRY. CONTRACTOR SHALL DETERMINE SHEAR STUD HEIGHT AND #5K9 BAR LENGTH BASED ON THE EXISTING GIRDER GEOMETRY.

AT GIRDERS 2 AND 3, CONTRACTOR SHALL MAINTAIN 2" CLEAR COVER FROM THE TOP OF THE #5K9 BAR TO THE TOP OF THE SLAB, AND THE #5K9 BAR SHALL OVERLAP THE STUD A MINIMUM OF 6". AT GIRDERS 1 AND 4, CONTRACTOR SHALL MAINTAIN 2" CLEAR COVER FROM THE TOP OF THE SHEAR STUD TO THE TOP OF THE SLAB.



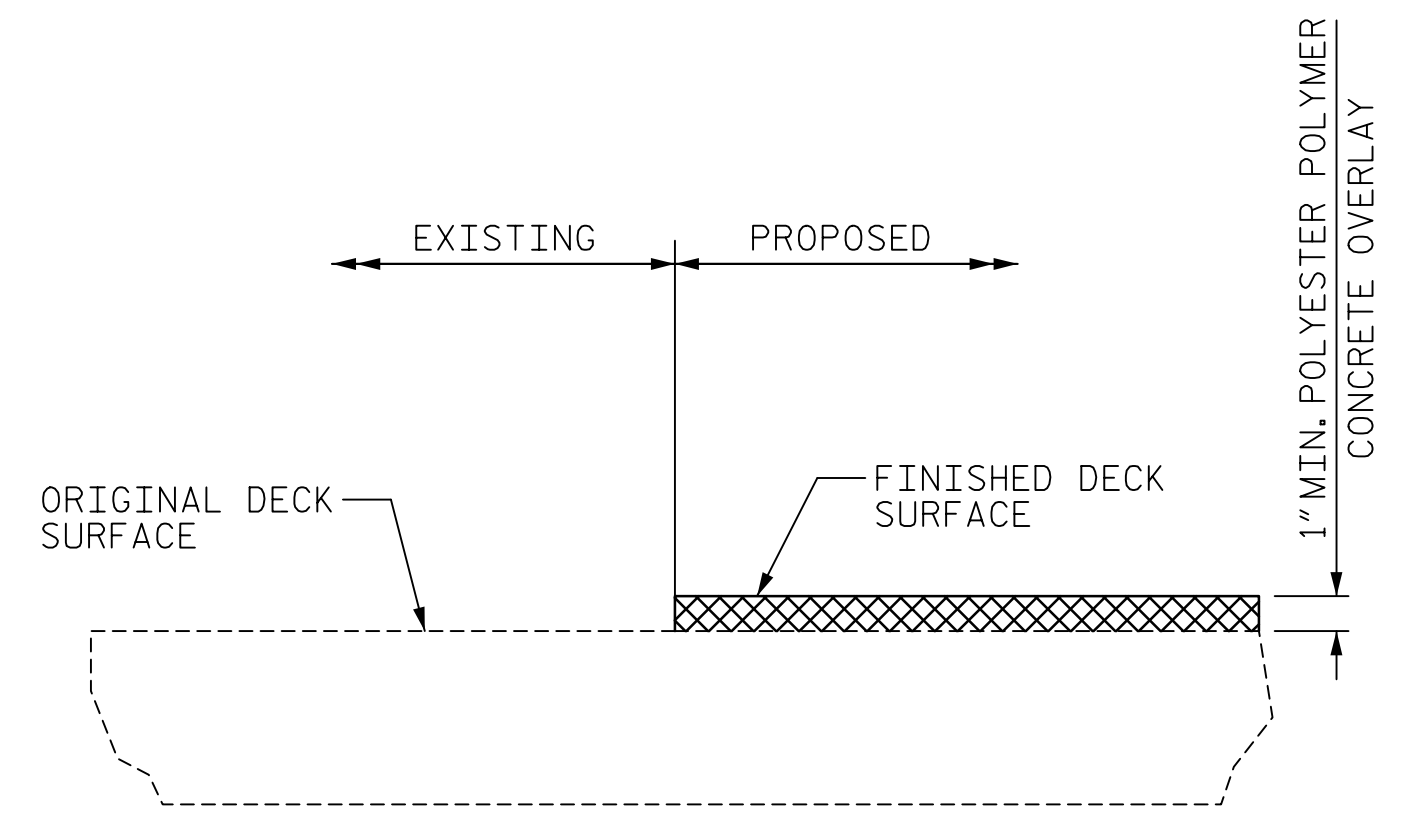
**DETAIL "D"**

"B" BARS IN DECK NOT SHOWN

**COUPLER NOTES:**

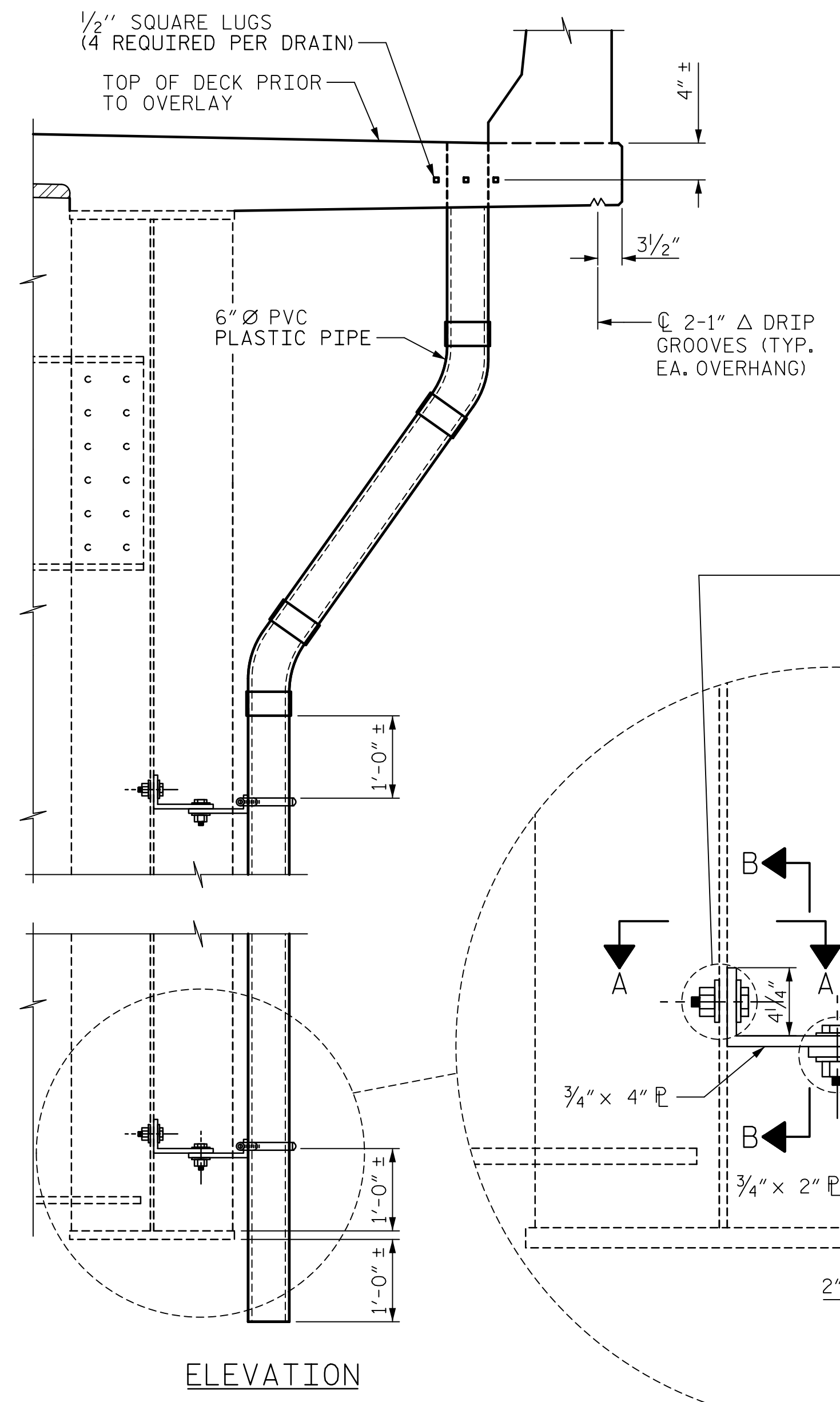
FOR MECHANICAL COUPLERS, SEE SPECIAL PROVISIONS.

THE CONTRACTOR SHALL SUBMIT WORKING DRAWINGS FOR THE COUPLER SYSTEM FOR ALL COUPLERS. THE CONTRACTOR SHALL BE RESPONSIBLE FOR ENSURING THAT MALE AND FEMALE THREADS MATCH PRIOR TO INSTALLATION AND WILL BE RESPONSIBLE FOR ANY ADDITIONAL COST ASSOCIATED WITH MATCHING THREADS. THE WEIGHT OF THE COUPLER FLANGE AND THREADS IS CONSIDERED INCIDENTAL TO THE WEIGHT OF THE REINFORCING AND THE COST IS INCIDENTAL TO THE COST OF THE REINFORCED CONCRETE DECK SLAB, OR REINFORCED CONCRETE DECK SLAB (ALL LIGHTWEIGHT CONCRETE).



**DETAIL FOR POLYESTER POLYMER CONCRETE OVERLAY**

DRAWN BY : H. T. ROSEMOND	DATE : 11/2018
CHECKED BY : G. R. COLS	DATE : 11/2018
DESIGNED BY : M. K. TOM	DATE : 11/2018
DESIGN CHECKED BY : G. R. COLS	DATE : 11/2018



**DRAIN PIPE CONNECTION DETAILS**

(TOTAL ASSEMBLIES REQUIRED = 390)

**DRAIN NOTES:**

COUPLING IN DRAIN PIPE WILL BE PERMITTED AS APPROVED BY THE ENGINEER.

TOP OF FLOOR DRAIN TO BE SET 3/8" BELOW SURFACE OF SLAB.

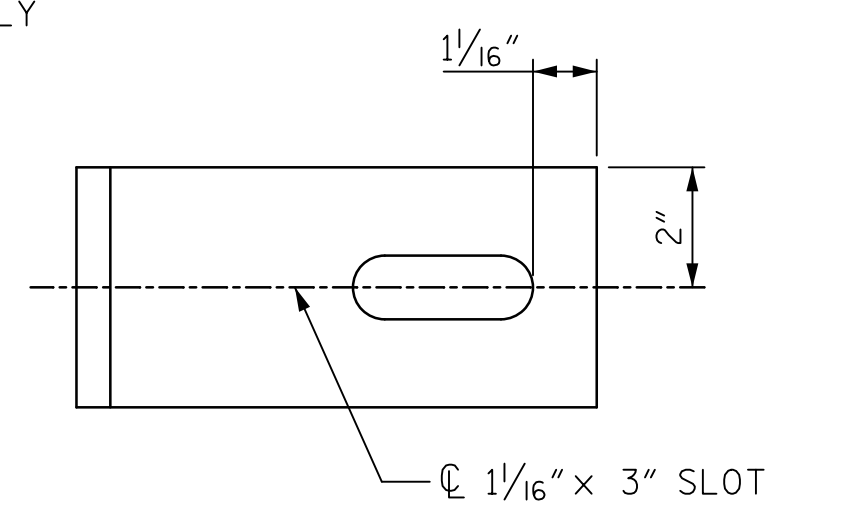
4 - 1/2" SQUARE LUGS TO BE GLUED TO THE PVC PLASTIC PIPE AT EQUAL SPACES AROUND THE PIPE DRAIN APPROXIMATELY 4" FROM THE TOP OF THE PIPE.

BOLT SIZE TO BE SAME AS DIAPHRAGMS AND CROSSFRAME CONNECTIONS. STAINLESS STEEL WORM DRIVE HOSE CLAMP SHALL BE COMMERCIAL QUALITY.

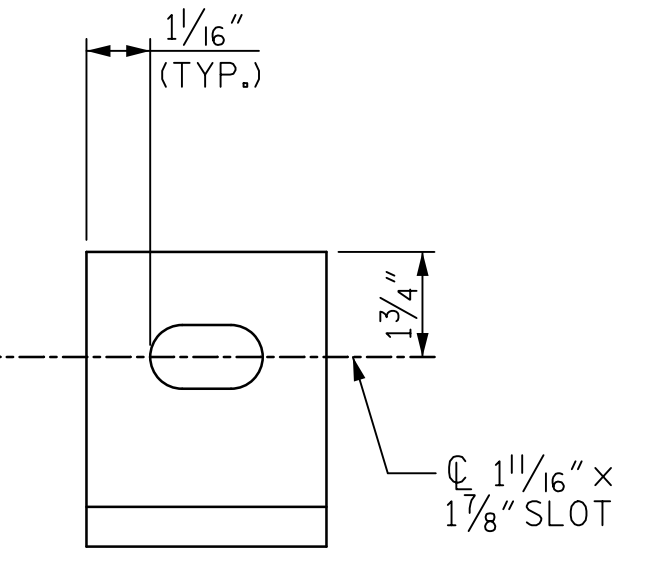
PVC DECK DRAINS SHALL BE COLORED TO MATCH THE PAINTED EXTERIOR STEEL GIRDERS. THE CONTRACTOR SHALL SUBMIT A METHOD AND SAMPLES TO THE ENGINEER FOR APPROVAL PRIOR TO ORDERING MATERIALS. NO SEPARATE PAYMENT SHALL BE MADE FOR PAINTING PVC DECK DRAINS AS THIS IS CONSIDERED INCIDENTAL TO PAY ITEM FOR REINFORCED CONCRETE DECK SLAB.

THE 6" Ø PVC PLASTIC PIPE AND FITTINGS SHALL BE SCHEDULE 40 AND CONFORM TO ASTM D1785.

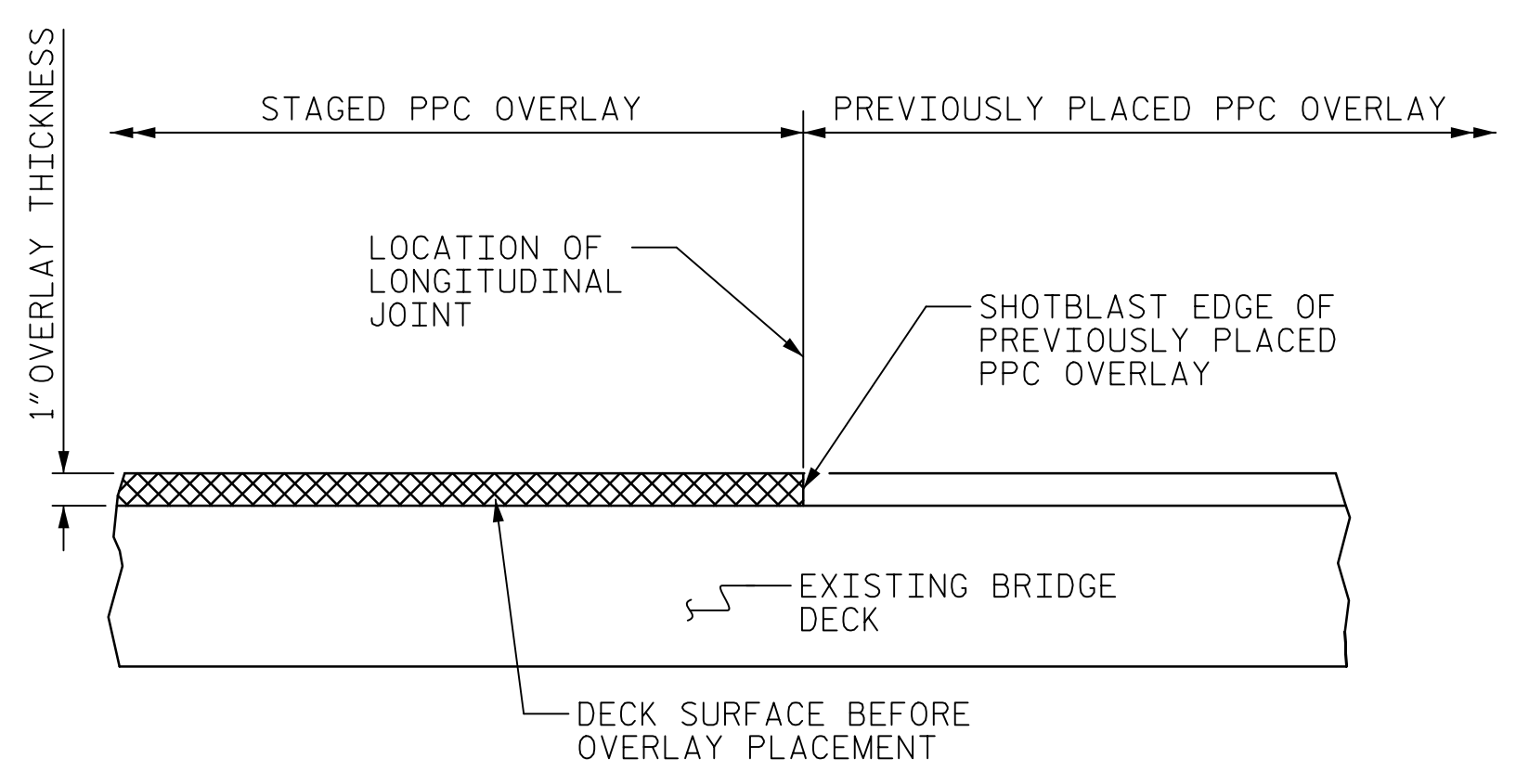
PLATES SHALL CONFORM TO AASTHO M270 GRADE 36 STEEL OR APPROVED EQUAL.



**SECTION A-A**



**SECTION B-B**



**STAGED PPC OVERLAY JOINT**

(AS NEEDED)

DOCUMENT NOT CONSIDERED FINAL UNLESS ALL SIGNATURES COMPLETED

PROJECT NO. 15BPR.20  
HENDERSON COUNTY  
STATION: 35+30.22 -L-

SHEET 10 OF 10



STATE OF NORTH CAROLINA  
DEPARTMENT OF TRANSPORTATION  
RALEIGH

SUPERSTRUCTURE

**TYPICAL SECTION DETAILS**

REVISIONS						SHEET NO.
NO.	BY:	DATE:	NO.	BY:	DATE:	S-32
1			3			TOTAL SHEETS
2			4			129

USER: Merit Research  
DGN: R:\Structures\04 Drawings\01\_063\_15BPR.20\_SMLT510.dgn