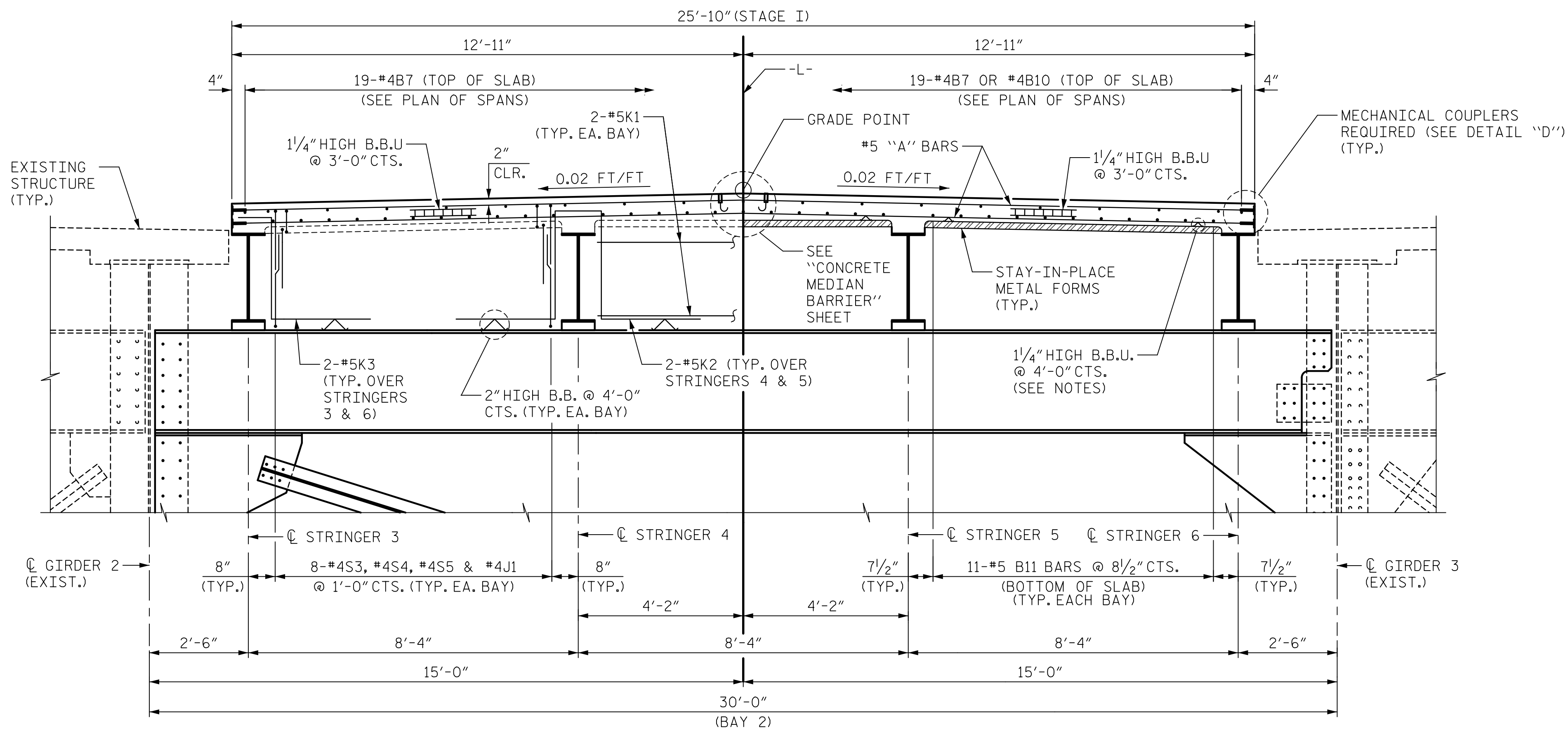


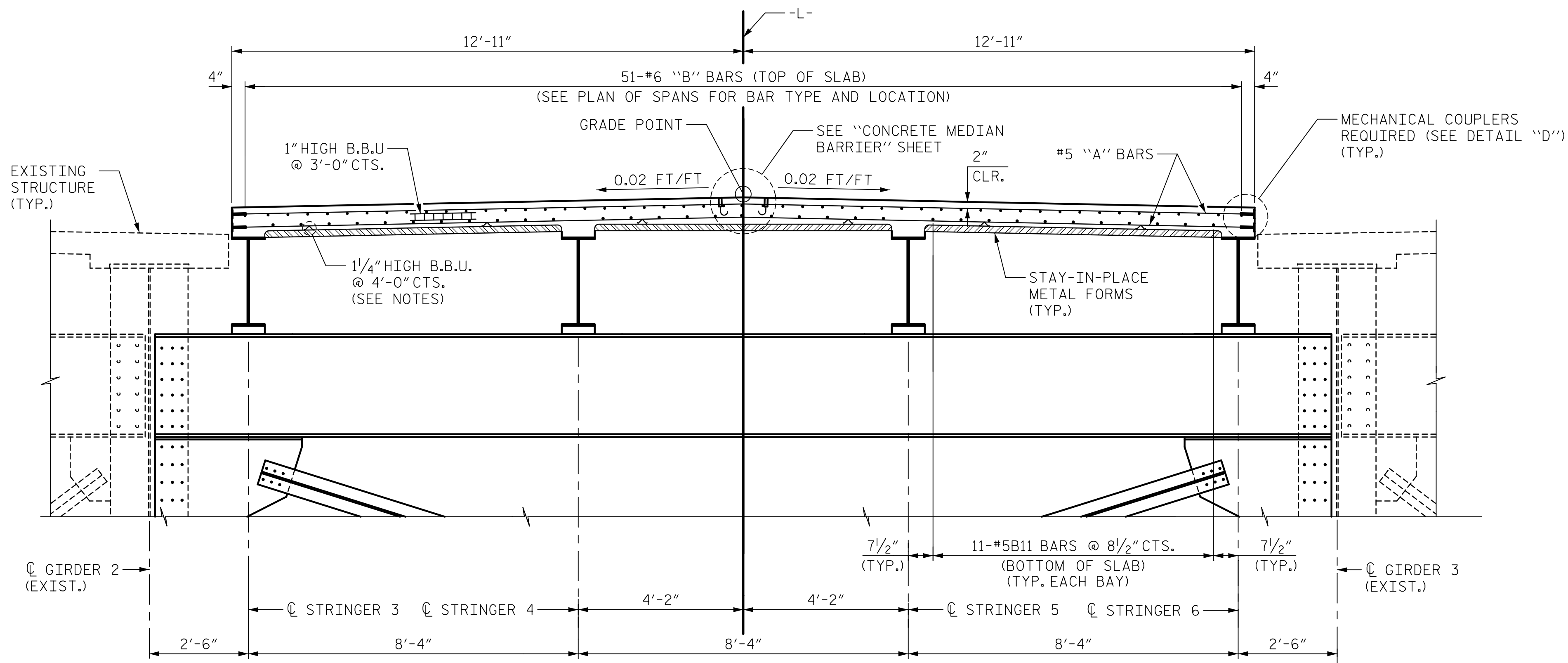
DATE: 2/27/2020
TIME: 3:55:56 PM



HALF-SECTION AT BENT 1 & BENT 4 HALF-SECTION AT INT. CROSSFRAME

TYPICAL SECTION

FOR ADDITIONAL DIMENSIONS, SEE SHEET 1.



TYPICAL SECTION AT BENTS 2 AND 3

FOR ADDITIONAL DIMENSIONS, SEE SHEET 1.

NOTES:

PROVIDE 1/4" HIGH BEAM BOLSTERS UPPER AT 4'-0" CTS. ATOP OF METAL STAY-IN-PLACE FORMS TO SUPPORT THE BOTTOM MAT OF "A" BARS.

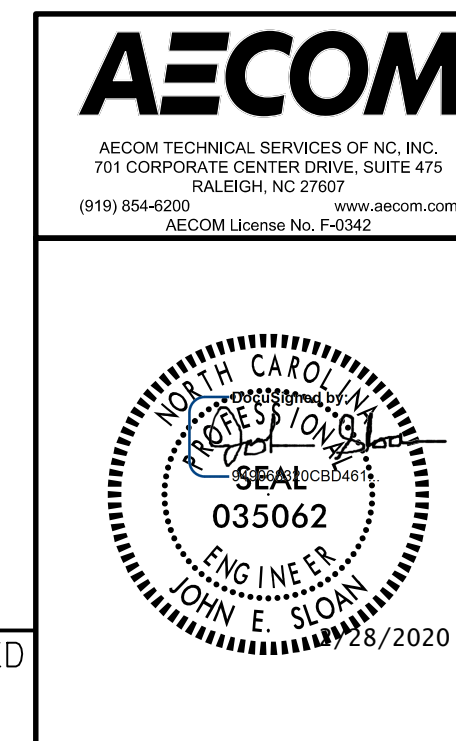
FOR EACH STAGE, PREVIOUSLY CAST CONCRETE IN A CONTINUOUS UNIT SHALL ATTAINED A MINIMUM COMPRESSIVE STRENGTH OF 3,000 PSI BEFORE ADDITIONAL CONCRETE IS CAST IN THE UNIT.

FOR DETAIL "D", SEE SHEET 10 OF 10.

USER: MrcH/Resmond/Drawings/01_051_15BPR20_SMLT/54.dgn

DRAWN BY :	M. K. TOM	DATE :	1/2019
CHECKED BY :	G. R. COLS	DATE :	1/2019
DESIGNED BY :	H. T. ROSEMOND	DATE :	1/2019
DESIGN CHECKED BY :	J. SLOAN/J. LIU	DATE :	1/2019

DOCUMENT NOT CONSIDERED
FINAL UNLESS ALL
SIGNATURES COMPLETED



PROJECT NO. 15BPR.20
HENDERSON COUNTY
STATION: 35+30.22 -L-

SHEET 4 OF 10

STATE OF NORTH CAROLINA
DEPARTMENT OF TRANSPORTATION
RALEIGH

SUPERSTRUCTURE

TYPICAL SECTION
STAGE I
SPANS B-D

REVISIONS						SHEET NO.
NO.	BY:	DATE:	NO.	BY:	DATE:	S-26
1			3			TOTAL SHEETS
2			4			129