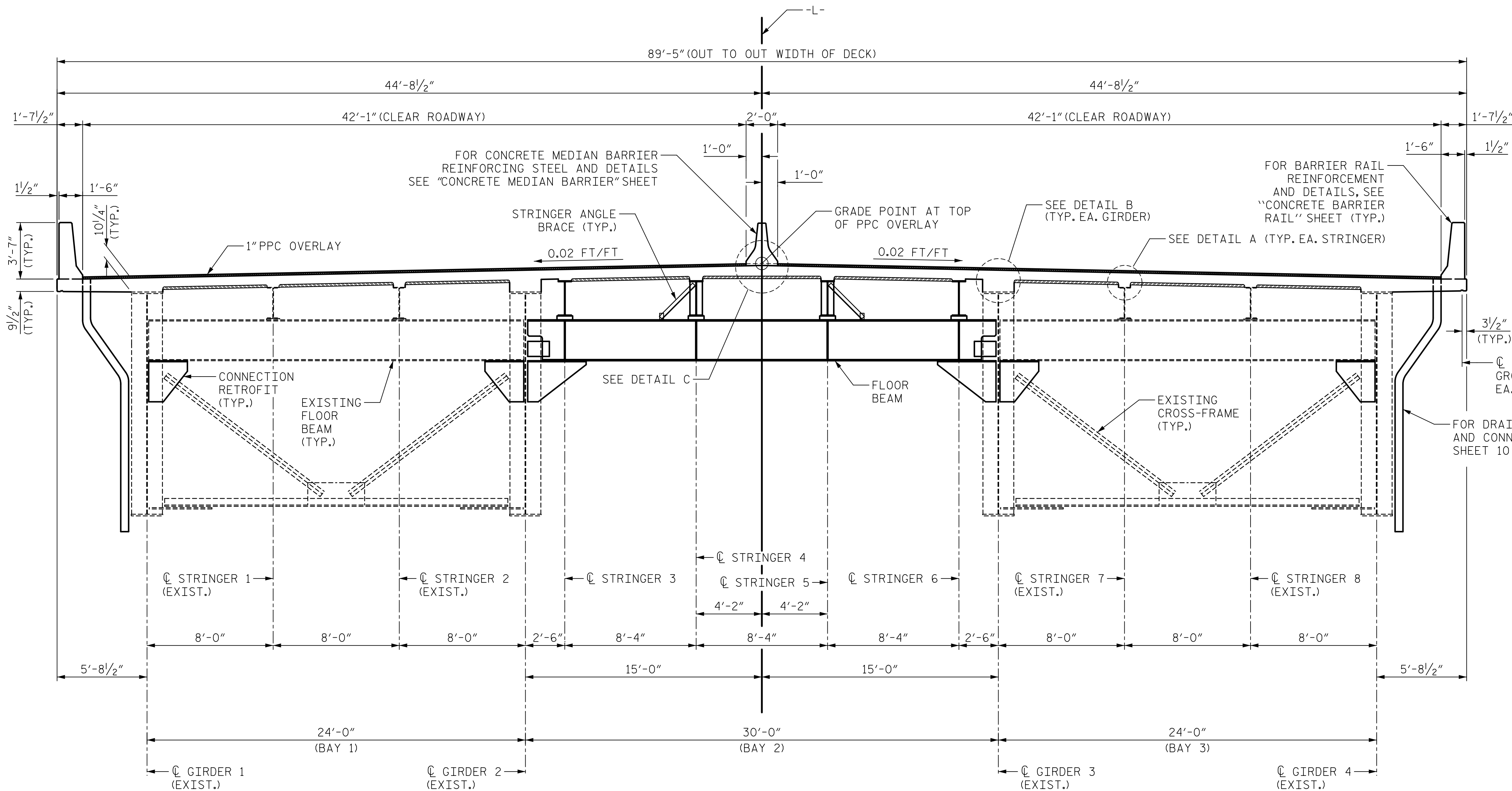


DATE: 2/27/2020 TIME: 3:55:01 PM

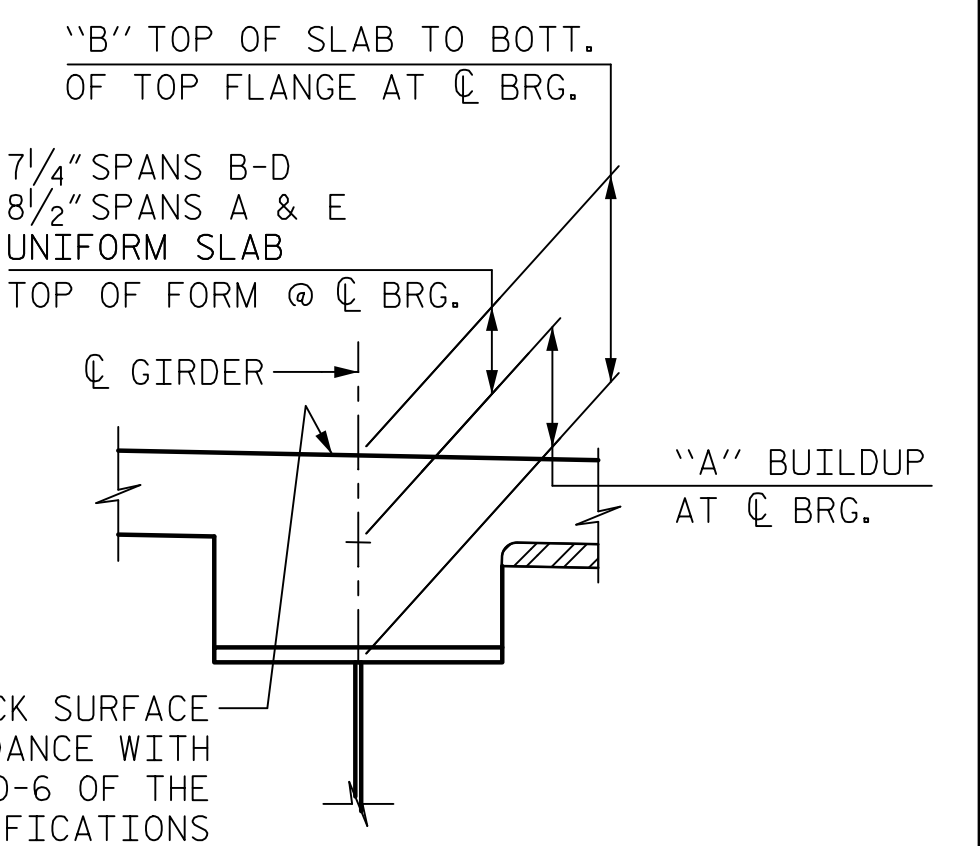
USER: Arch/Resonance Drawings\01_045_15BPR.20_SMT_Sldprt



TYPICAL SECTION

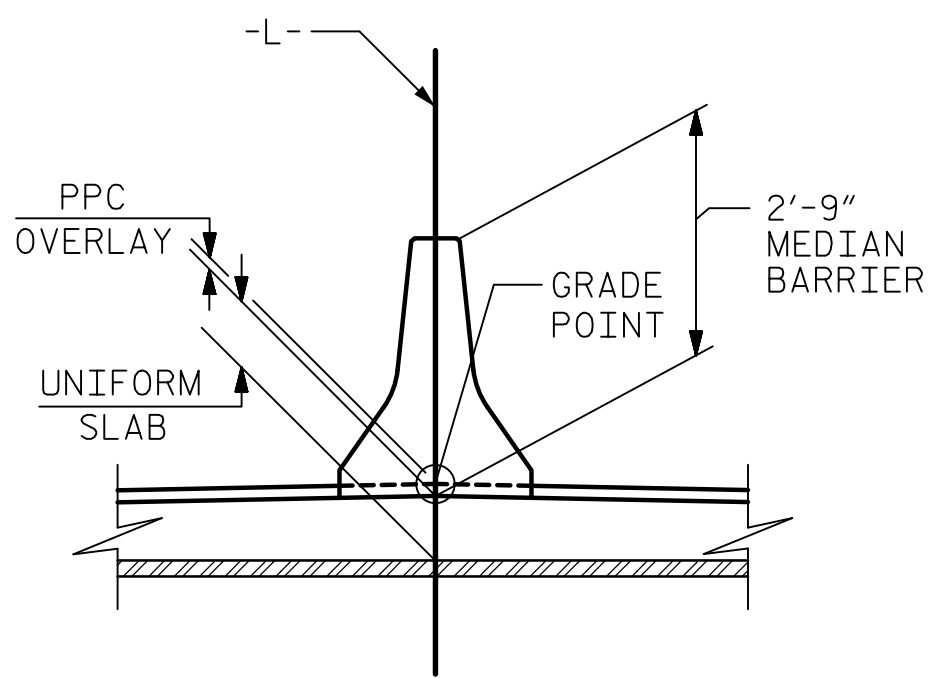
(CROSSFRAMES SHOWN TYPICAL OF INTERMEDIATE CROSSFRAMES)

NOTES:
 FOR PPC OVERLAY DETAILS, SEE SHEET 10 OF 10.
 FOR "X" CROSSFRAME DIAPHRAGMS AT BENTS AND END BENTS, SEE SHEET 2 OF 10.
 FOR STRINGER BUILDUP, DETAIL A, SEE SHEET 2 OF 10.
 CONTRACTOR SHALL TINE THE DECK AND GROOVE THE PPC OVERLAY. FOR DETAILS, SEE SPECIAL PROVISIONS.



DETAIL B AT GIRDER

(PPC OVERLAY NOT SHOWN FOR CLARITY)
 (DIMENSIONS SHOWN DO NOT INCLUDE PPC OVERLAY)



DETAIL C

THE GRADE POINT IS AT THE TOP OF THE PPC OVERLAY

ESTIMATED GIRDER BUILDUP DIM "A"								
GIRDER	CENTERLINE OF BEARING BUILDUP AT CROSSFRAME POINTS *							
	A1	A5	1	12	26	37	E1	E5
1 & 4	5"	4 1/2"	6 3/4"	7 1/4"	6 1/4"	7 1/2"	5 1/2"	4 3/4"
2 & 3	10 3/4"	10 1/4"	1'-0 1/2"	1'-1"	1'-0"	1'-1 1/4"	11 1/4"	11 1/4"

ESTIMATED TOP OF SLAB TO BOTTOM OF TOP FLANGE DIM "B"								
GIRDER	CENTERLINE OF BEARING BUILDUP AT CROSSFRAME POINTS *							
	A1	A5	1	12	26	37	E1	E5
1 & 4	1'-1 1/2"	1'-1"	1'-2"	1'-2 1/2"	1'-1 1/2"	1'-2 3/4"	1'-2"	1'-1 1/4"
2 & 3	1'-7 1/4"	1'-6 3/4"	1'-7 3/4"	1'-8 1/4"	1'-7 1/4"	1'-8 1/2"	1'-7 3/4"	1'-7 3/4"

* VALUES REPORTED TO NEAREST 1/4"

PROJECT NO. 15BPR.20
HENDERSON COUNTY
 STATION: 35+30.22 -L-

SHEET 1 OF 10

AECOM
 AECOM TECHNICAL SERVICES OF NC, INC.
 701 CORPORATE CENTER DRIVE, SUITE 475
 RALEIGH, NC 27607
 (919) 854-6200 www.aecom.com
 AECOM License No. F-0342

STATE OF NORTH CAROLINA
 JOHN E. SLOAN
 ENGINEER
 035062
 2/28/2020

STATE OF NORTH CAROLINA
DEPARTMENT OF TRANSPORTATION
 RALEIGH

SUPERSTRUCTURE
 TYPICAL SECTION
 FINAL STAGE
 AND PPC OVERLAY

REVISIONS						SHEET NO.
NO.	BY:	DATE:	NO.	BY:	DATE:	S-23
1			3			TOTAL SHEETS
2			4			129

DRAWN BY : S. STREDNAK DATE : 11/2018
 CHECKED BY : J. SLOAN DATE : 11/2018
 DESIGNED BY : N. BROWN/D. TUTTLE DATE : 11/2018
 DESIGN CHECKED BY : J. SLOAN/J. LIU DATE : 11/2018

DOCUMENT NOT CONSIDERED
 FINAL UNLESS ALL
 SIGNATURES COMPLETED