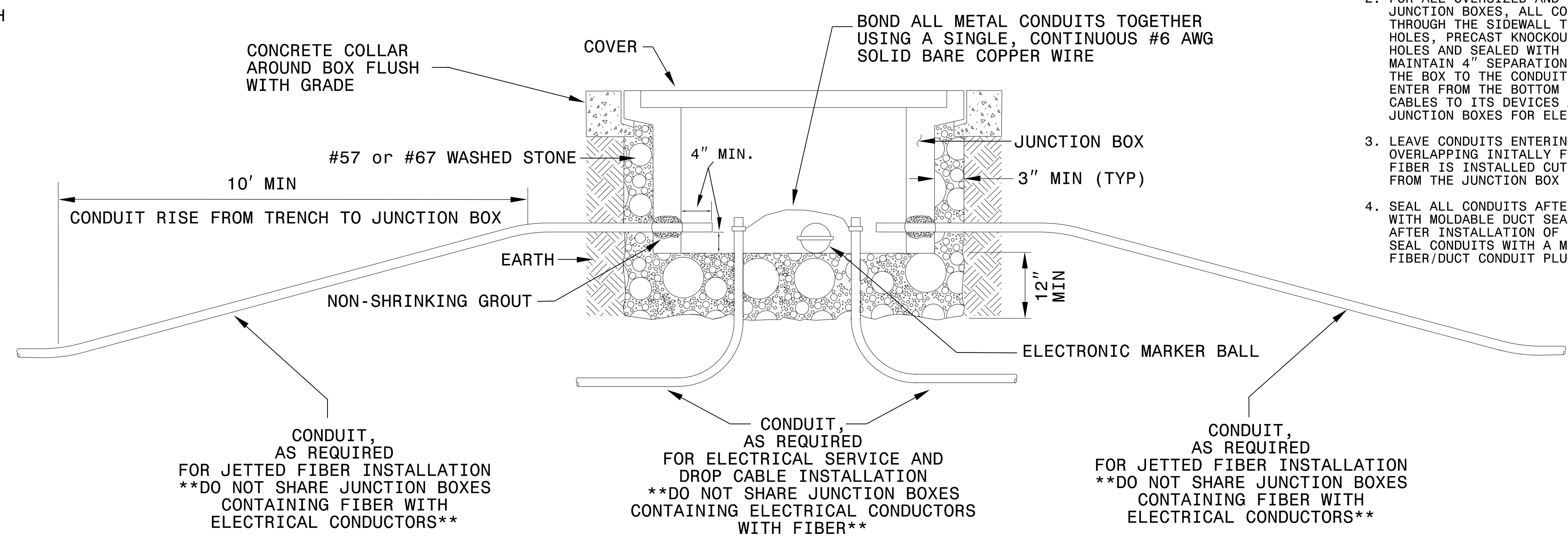


**NOTES**

- FURNISH "TIER 22" RATED JUNCTION BOXES AND COVERS
- SECURE COVER WITH HEX BOLTS.
- COIL AND STORE 6' OF TRACER WIRE JUMPER IN ALL JUNCTION BOXES WITH FIBER OPTIC CABLE.
- BOX INSIDE DIMENSIONS:
  - STANDARD SIZED: 16" (l) x 10" (w) x 10" (d)
  - OVERSIZED: 28" (l) x 15" (w) x 22" (d)
  - SPECIAL OVERSIZED: 33" (l) x 22" (w) x 22" (d)
  - ADDITIONAL SIZES: ( \_ ) (l) x ( \_ ) (w) x ( \_ ) (d)
- PROVIDE 6" & 12" VERTICAL JUNCTION BOX EXTENDERS AS NEEDED

**INSTALLATION CROSS-SECTION  
JUNCTION BOX**

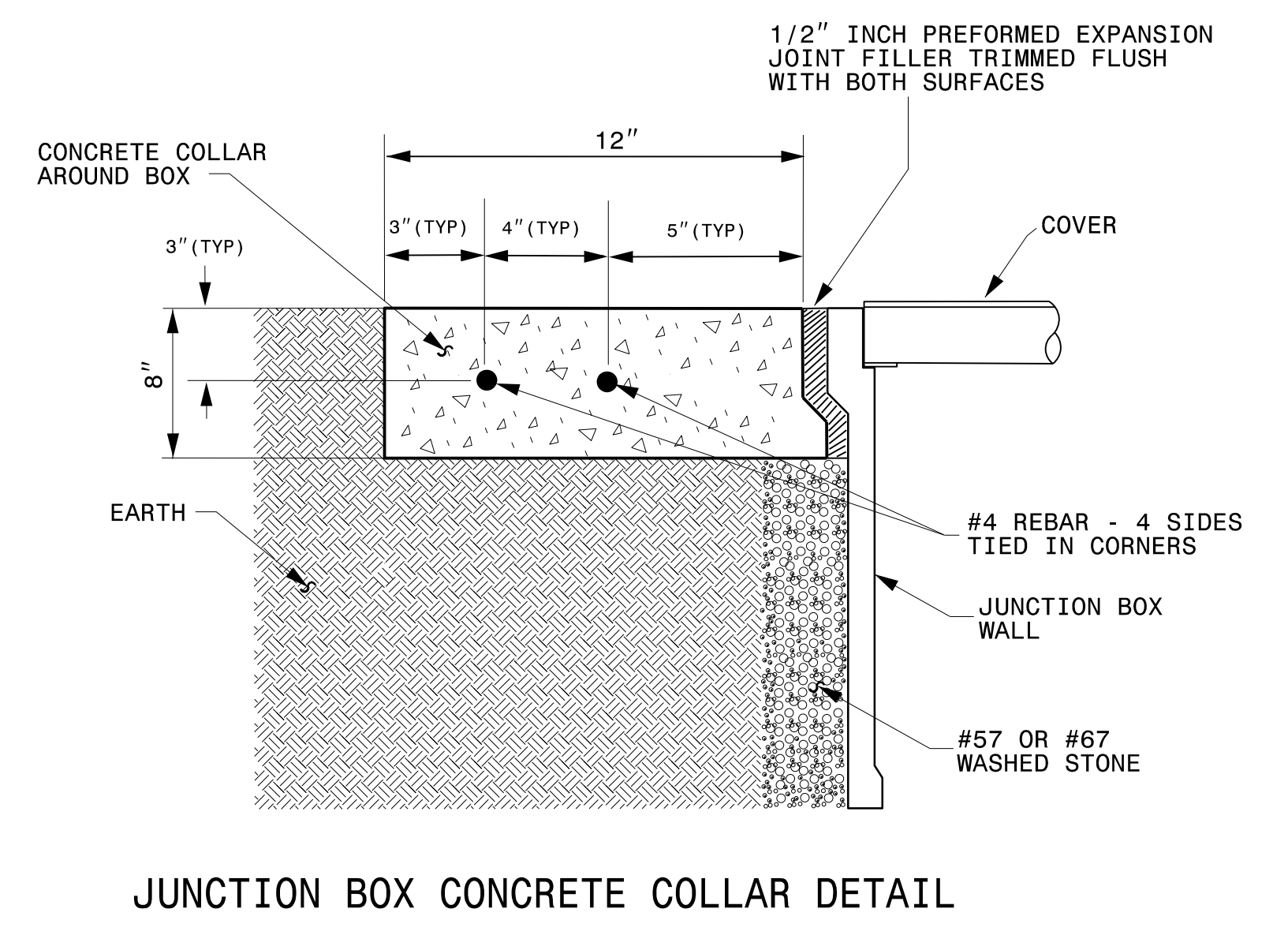
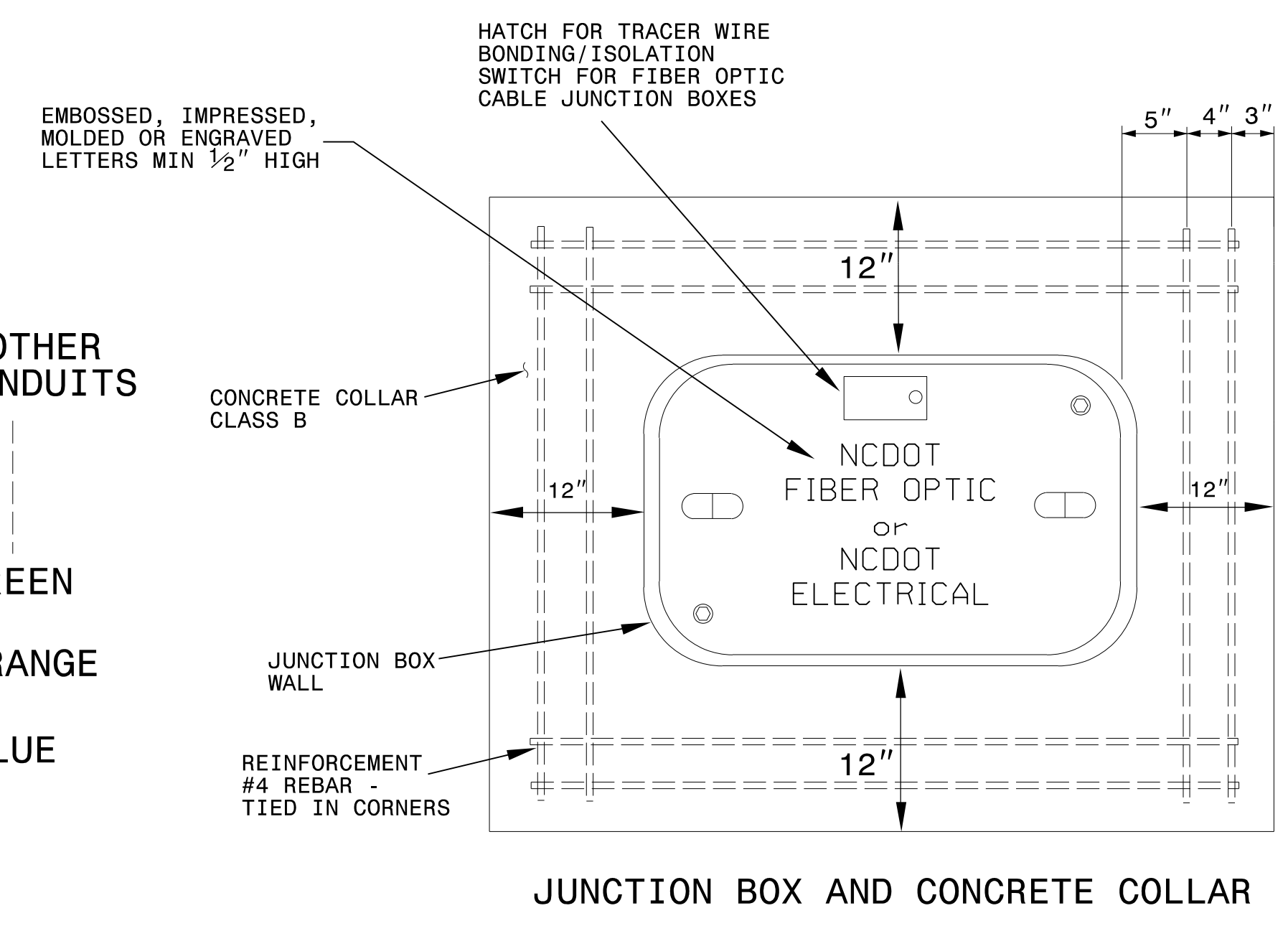
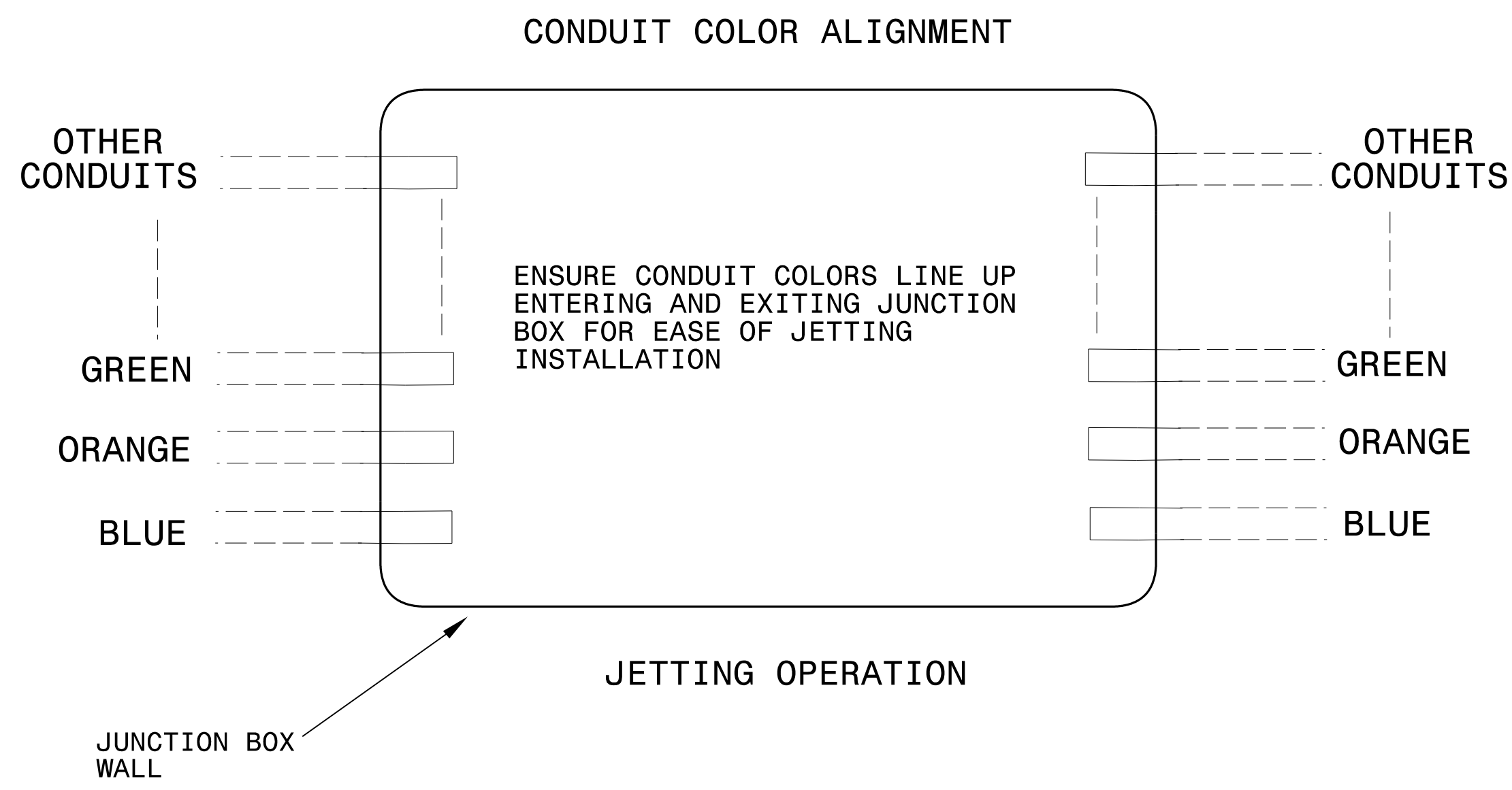


**CONDUIT ENTERING JUNCTION BOX  
(JETTED FIBER INSTALLATION)**

- PROVIDE OVERSIZED AND SPECIAL OVERSIZED JUNCTION BOXES WITH MOUSE HOLES, PRECAST KNOCKOUTS OR FIELD DRILL CONDUIT ENTRANCE HOLES.
- FOR ALL OVERSIZED AND SPECIAL OVERSIZED JUNCTION BOXES, ALL CONDUITS SHALL ENTER THROUGH THE SIDEWALL THROUGH THE MOUSE HOLES, PRECAST KNOCKOUTS OR FIELD DRILLED HOLES AND SEALED WITH NON-SHRINKING GROUT. MAINTAIN 4" SEPARATION FROM THE BOTTOM OF THE BOX TO THE CONDUITS. (NO CONDUIT SHALL ENTER FROM THE BOTTOM EXCEPT FOR DROP CABLES TO ITS DEVICES AND FOR STANDARD JUNCTION BOXES FOR ELECTRICAL SERVICE WIRES)
- LEAVE CONDUITS ENTERING SIDES OF JUNCTION BOX OVERLAPPING INITIALLY FOR JETTING PURPOSES. AFTER FIBER IS INSTALLED CUT CONDUIT BACK TO FOUR INCHES FROM THE JUNCTION BOX SIDEWALL.
- SEAL ALL CONDUITS AFTER INSTALLATION WITH MOLDABLE DUCT SEAL. AFTER INSTALLATION OF FIBER CABLE, SEAL CONDUITS WITH A MECHANICAL FIBER/DUCT CONDUIT PLUGS.

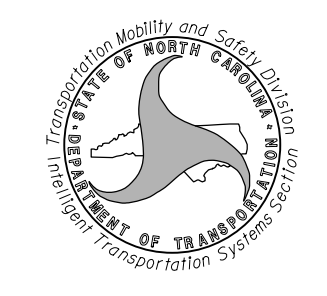
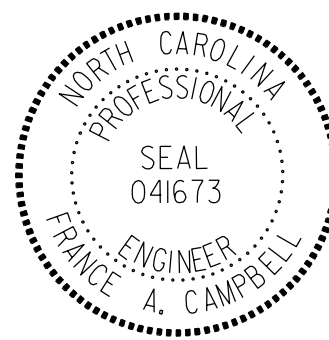
**ELECTRONIC MARKER BALL**  
ORANGE BALL - 101.4 kHz - FIBER  
RED BALL - 169.8 kHz - POWER

**TOP VIEW**



12/17/2020 P:\60587170-1-26\_GreenRt\ver-1004900-CAD.dwg 10-CAD\WTO\_NCDOT-TIP\Traffic\ck5\gna\lsm\ITS\1-26\_ITS\_P5131.dgn mitchell.covernaugh



Prepared for the Offices of:		DOCUMENT NOT CONSIDERED FINAL UNLESS ALL SIGNATURES COMPLETED	
 Limited Access Junction Box Installation Detail		 SEAL 041673 ENGINEER FRANCE A. CAMPBELL	
PREPARED BY: S. W. Cox	REVIEWED BY:	REVISIONS	INIT. DATE
SCALE: 0 N.A. N.T.S.		DocuSigned by: France Campbell 12/8/2020 CADD Filename:	