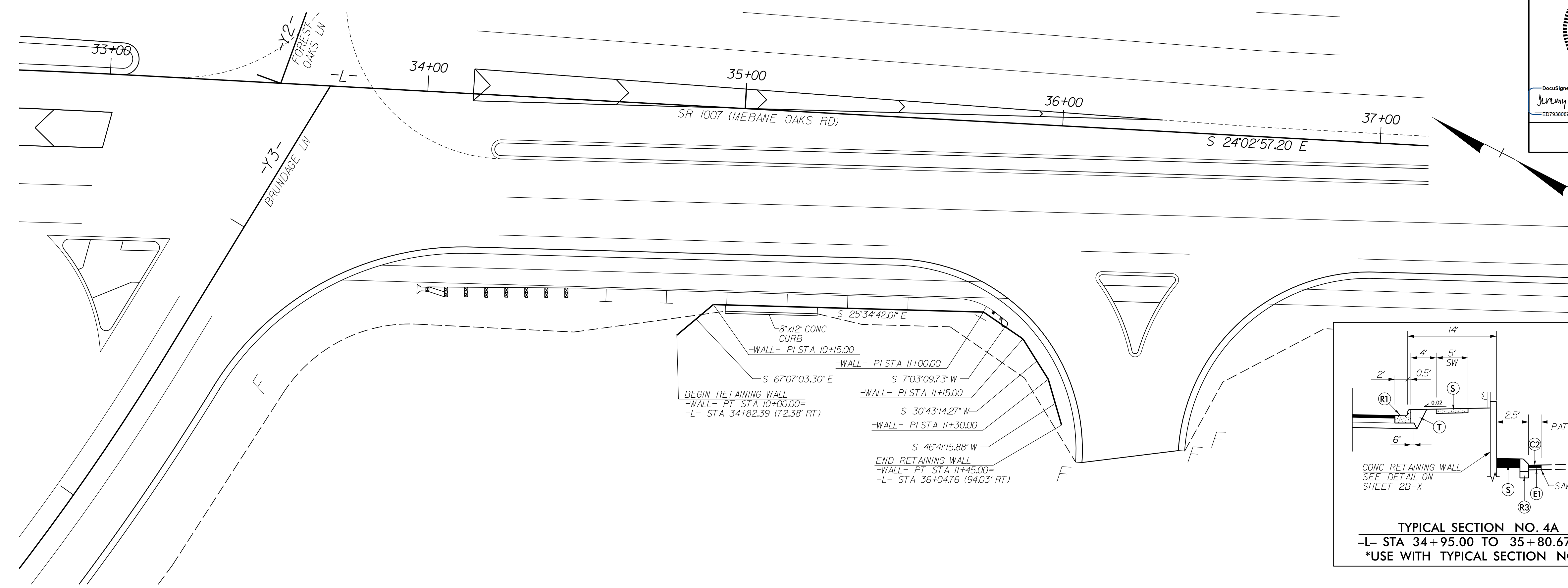
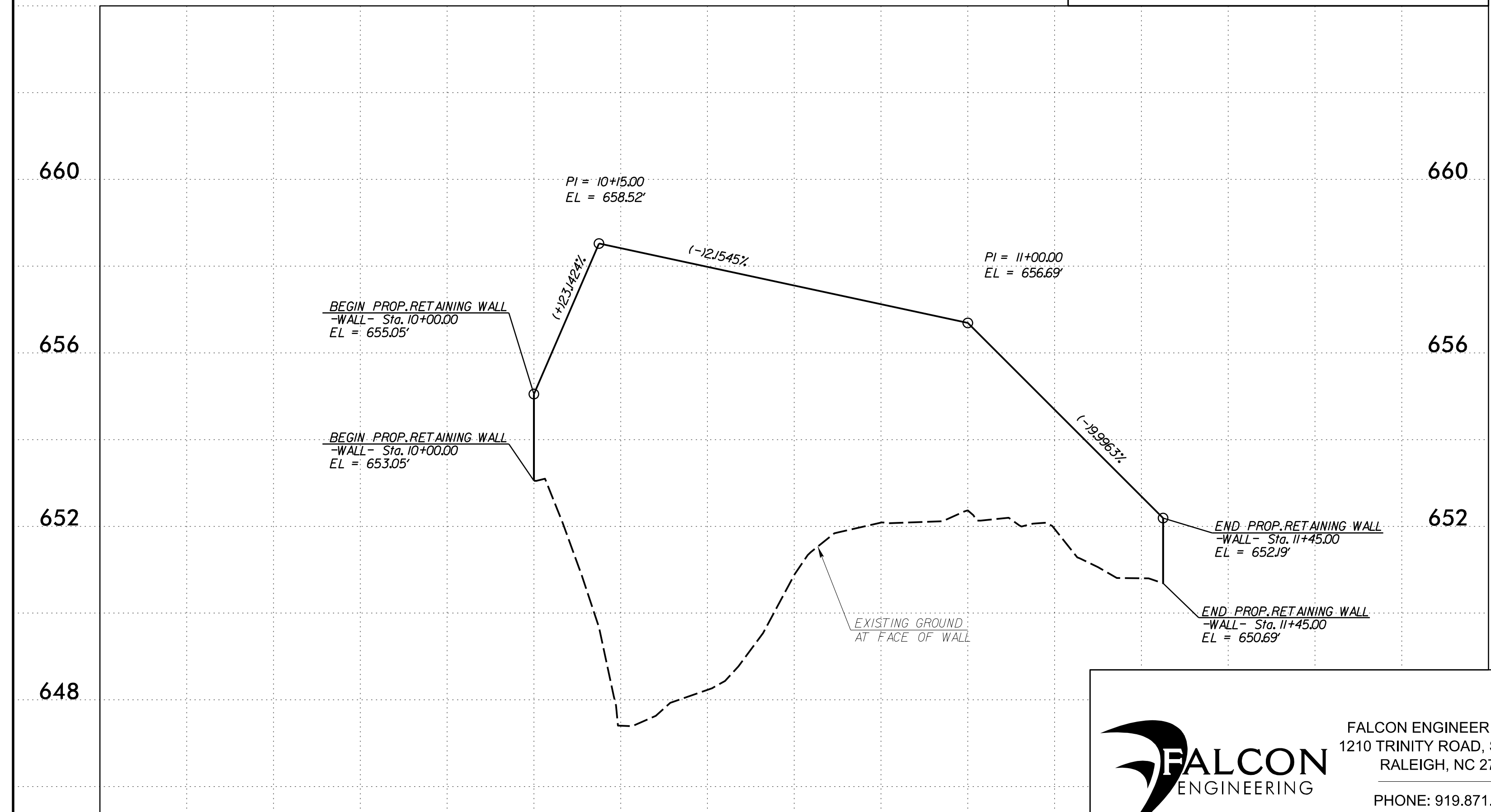


GEOTECHNICAL ENGINEER
 ENGINEER
 NORTH CAROLINA PROFESSIONAL SEAL 39779
 ENGINEERS JEREMY R. HAMM
 Signed by: *Jeremy R. Hamm* 6/27/2019
 DOCUMENT NOT CONSIDERED FINAL UNLESS ALL SIGNATURES COMPLETED



WALL ENVELOPE



ESTIMATED MSE WALL QUANTITIES (SQUARE FEET)

MSE RETAINING WALL NO. 1	1160 SF
--------------------------	---------

PROJECT NO.: I-5711
 ALAMANCE COUNTY
 STATION: 34+82.39, 72.38' RT TO 36+04.76, 94.03' RT
 SHEET 1 OF 3

FALCON ENGINEERING
 FALCON ENGINEERING, INC.
 1210 TRINITY ROAD, SUITE 110
 RALEIGH, NC 27607
 PHONE: 919.871.0800
 FAX: 919.871.0803

NORTH CAROLINA DEPARTMENT OF TRANSPORTATION
 DIVISION OF HIGHWAYS
GEOTECHNICAL ENGINEERING UNIT

RETAINING WALL NO. 1 WALL PLAN & ENVELOPE

REVISIONS					
NO.	BY	DATE	NO.	BY	DATE
1			3		
2			4		

SHEET NO. W-1