


1/14/2020 10:06:38 AM G:\Projects\2017\I-5711\Structures\Preservation\Drawings\401_I5711_SMU_B3R_000177.dgn

 SHOTCRETE REPAIR
 ERI — EPOXY RESIN INJECTION

NOTES:

REPAIR LOCATIONS AND ESTIMATE OF THE QUANTITIES ARE GIVEN WITH THE BEST INFORMATION AVAILABLE. IF ADDITIONAL REPAIRS NOT SHOWN ON THE DRAWINGS ARE DEEMED NECESSARY BY THE INSPECTOR OR ENGINEER THE CONTRACTOR SHALL NOTE ON THE DRAWINGS THE APPROXIMATE LOCATION AND DESCRIPTION OF THE REPAIRS AND ADJUST THE ACTUAL QUANTITIES ENTERED INTO THE REPAIR QUANTITY TABLE.

FOR SUBSTRUCTURE REPAIR DETAIL, SEE "SUBSTRUCTURE REPAIR DETAIL" SHEET.

FOR EPOXY RESIN INJECTION, SEE SPECIAL PROVISIONS.

FOR SHOTCRETE REPAIRS, SEE SPECIAL PROVISIONS.

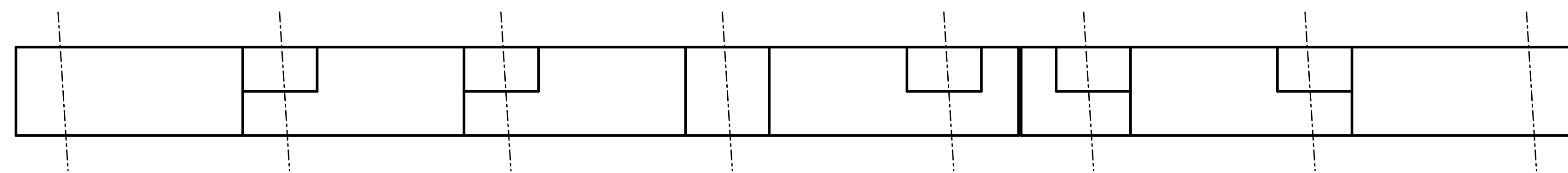
SHOTCRETE REPAIRS MAY BE REPLACED WITH CONCRETE REPAIRS WITH THE APPROVAL OF THE ENGINEER.

FOR CONCRETE REPAIRS, SEE SPECIAL PROVISIONS.

THE CONTRACTOR SHALL CLEAN AND EPOXY COAT PAINT THE TOP SURFACE OF BENT CAPS.

FOR EPOXY COATING, SEE SPECIAL PROVISIONS.

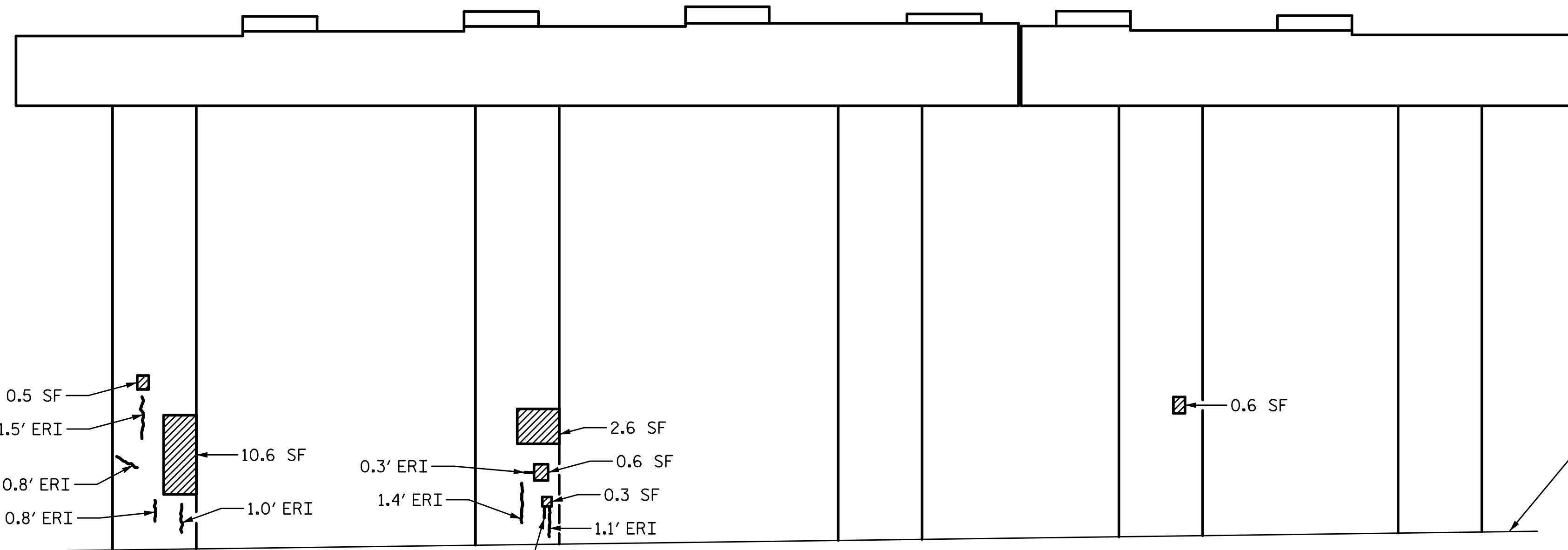
SEE SHEET 2 OF 2 FOR "REPAIR QUANTITY TABLE".



SPAN D

SPAN C

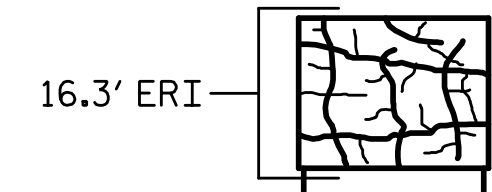
PLAN
TOP OF CAP



0.5 SF
 1.5' ERI
 0.8' ERI
 0.8' ERI
 10.6 SF
 1.0' ERI
 0.3' ERI
 1.4' ERI
 0.4' ERI
 2.6 SF
 0.6 SF
 0.3 SF
 1.1' ERI

0.6 SF

CONCRETE SLOPE PROTECTION



16.3' ERI

ELEVATION
SPAN C FACE

END VIEW
WEST FACE

PROJECT NO. I-5711
ALAMANCE COUNTY
 STATION: STA. 27+02.26 -L-

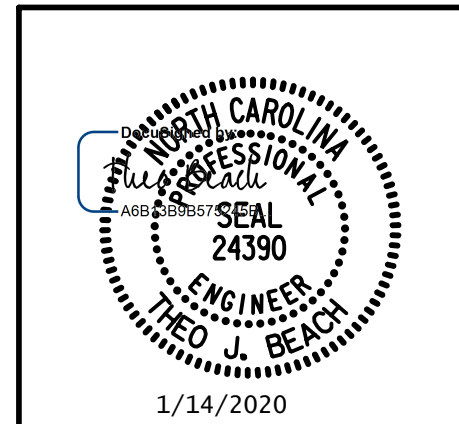
SHEET 1 OF 2

STATE OF NORTH CAROLINA
 DEPARTMENT OF TRANSPORTATION
 RALEIGH
 PRESERVATION

BENT 3

PLANS PREPARED BY:

SEA & A
 IMPSON ENGINEERS ASSOCIATES
 5640 Dillard Drive
 Suite 200
 Cary, NC 27518
 (919) 852-0468
 (919) 852-0598 (Fax)
 www.simpsonengr.com
 LICENSURE NO. C-2521



DRAWN BY: T. BANKOVICH DATE: 1-20
 CHECKED BY: T. BEACH DATE: 1-20
 DESIGN ENGINEER OF RECORD: T. BEACH DATE: 1-20

REVISIONS						SHEET NO.
NO.	BY:	DATE:	NO.	BY:	DATE:	S-86
1			3			TOTAL SHEETS
2			4			89

**DOCUMENT NOT CONSIDERED FINAL
 UNLESS ALL SIGNATURES COMPLETED**