

REPAIR QUANTITY TABLE

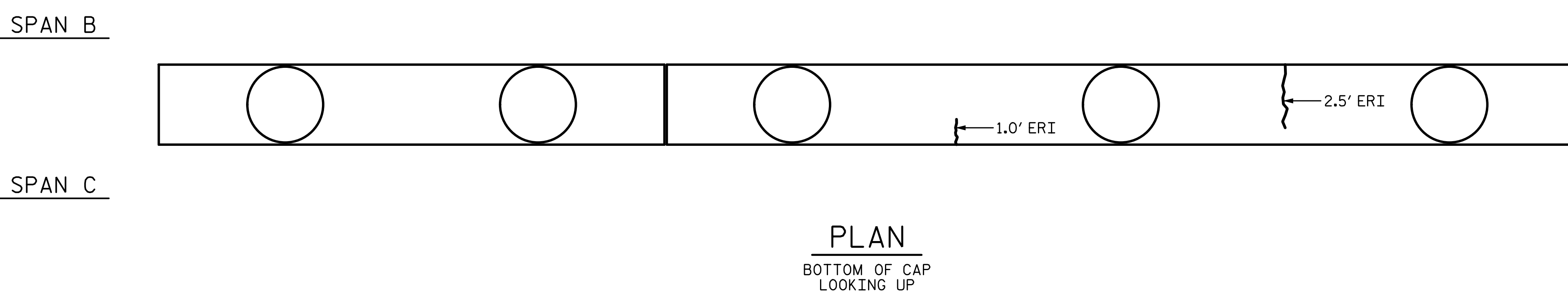
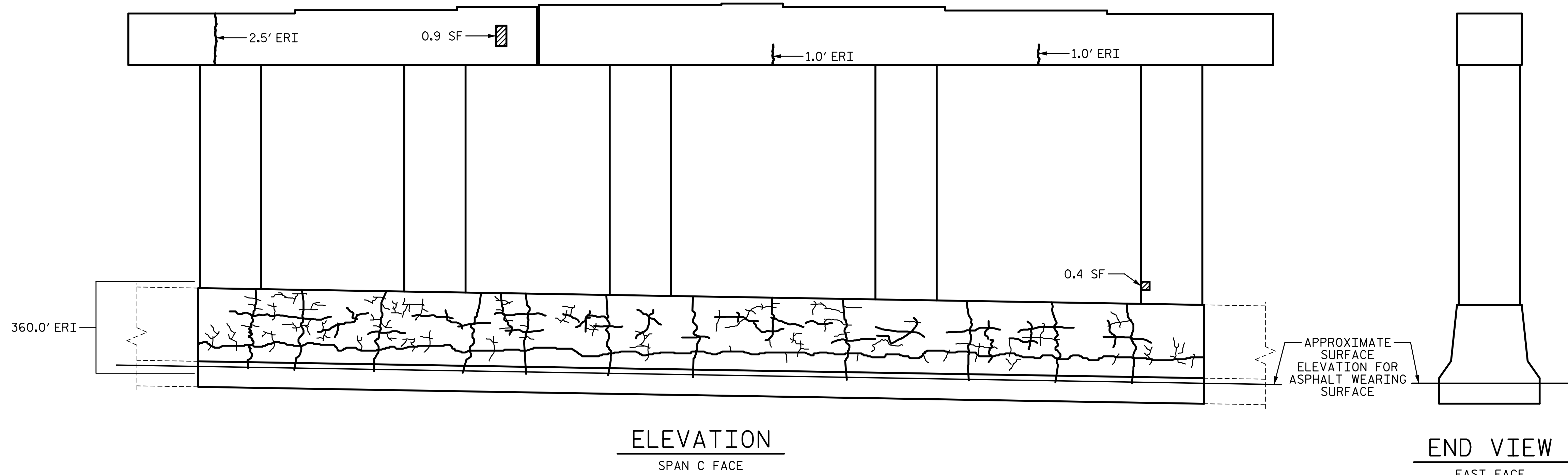
REPAIRS BENT 2	QUANTITIES				
	ESTIMATE		ACTUAL		
SHOTCRETE REPAIRS	AREA SF	VOLUME CF	AREA SF	DEPTH FT	VOLUME CF
CAP (VERTICAL FACE)	0.9	0.2			
CAP (HORIZONTAL, CORNER)	0.0	0.0			
COLUMN	5.6	1.6			
DOUBLE FACE CONC. MEDIAN BARRIER	0.0	0.0			
EPOXY RESIN INJECTION		LF			LF
CAP		8.0			
COLUMN		1.0			
DOUBLE FACE CONC. MEDIAN BARRIER		791.6			
EPOXY COATING		AREA SF			AREA SF
TOP OF CAP		158.4			

 SHOTCRETE REPAIR

ERI — EPOXY RESIN INJECTION

NOTES:

VALUES IN CHART REPRESENT ESTIMATE REPAIR TOTALS AFTER REMOVAL OF UNSOUND CONCRETE, MIN. OF 1" BEHIND REBAR AND MIN. 2" CL. TO SAWCUT. SEE REPAIR DETAILS.



SPAN B

SPAN C

PROJECT NO. I-5711
ALAMANCE COUNTY
 STATION: STA. 27+02.26 -L-

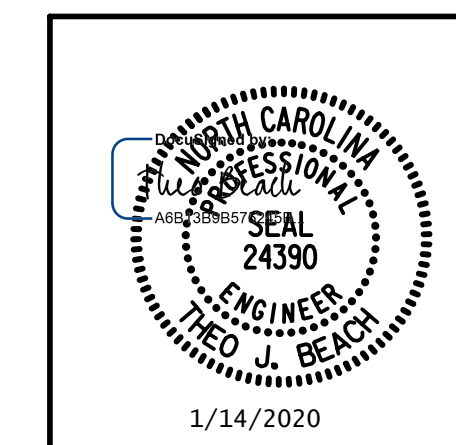
SHEET 2 OF 2

STATE OF NORTH CAROLINA
 DEPARTMENT OF TRANSPORTATION
 RALEIGH
 PRESERVATION

BENT 2

PLANS PREPARED BY:

SEA & A
 SIMPSON ENGINEERS & ASSOCIATES
 5640 Dillard Drive
 Suite 200
 Cary, NC 27518
 (919) 852-0468
 (919) 852-0598 (Fax)
 www.simpsonengr.com
 LICENSURE NO. C-2521



REVISIONS

NO.	BY:	DATE:	NO.	BY:	DATE:	SHEET NO.
1			3			TOTAL SHEETS
2			4			89

**DOCUMENT NOT CONSIDERED FINAL
 UNLESS ALL SIGNATURES COMPLETED**

1/14/2020 10:06:37 AM G:\Projects\2017\I-5711\Structures\Preservation\Drawings\401_I5711_SMU_B2R_000177.dgn

DRAWN BY: T. BANKOVICH DATE: 1-20
 CHECKED BY: T. BEACH DATE: 1-20
 DESIGN ENGINEER OF RECORD: T. BEACH DATE: 1-20