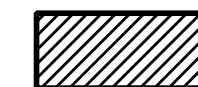
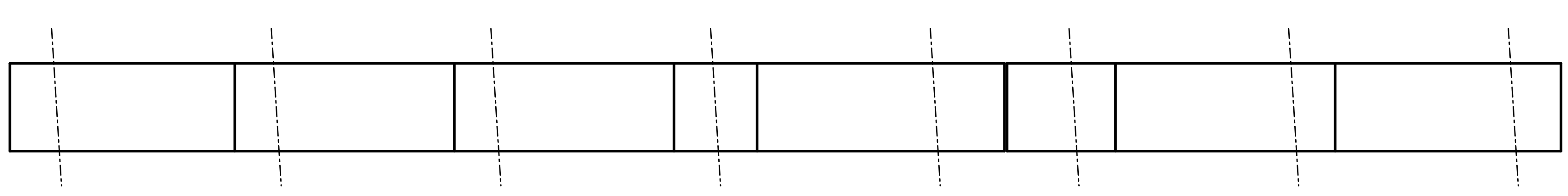


1/14/2020 10:06:37 AM G:\Projects\2017\I-5711\Structures\Preservation\Drawings\401\_I5711\_SMU\_B2R\_000177.dgn

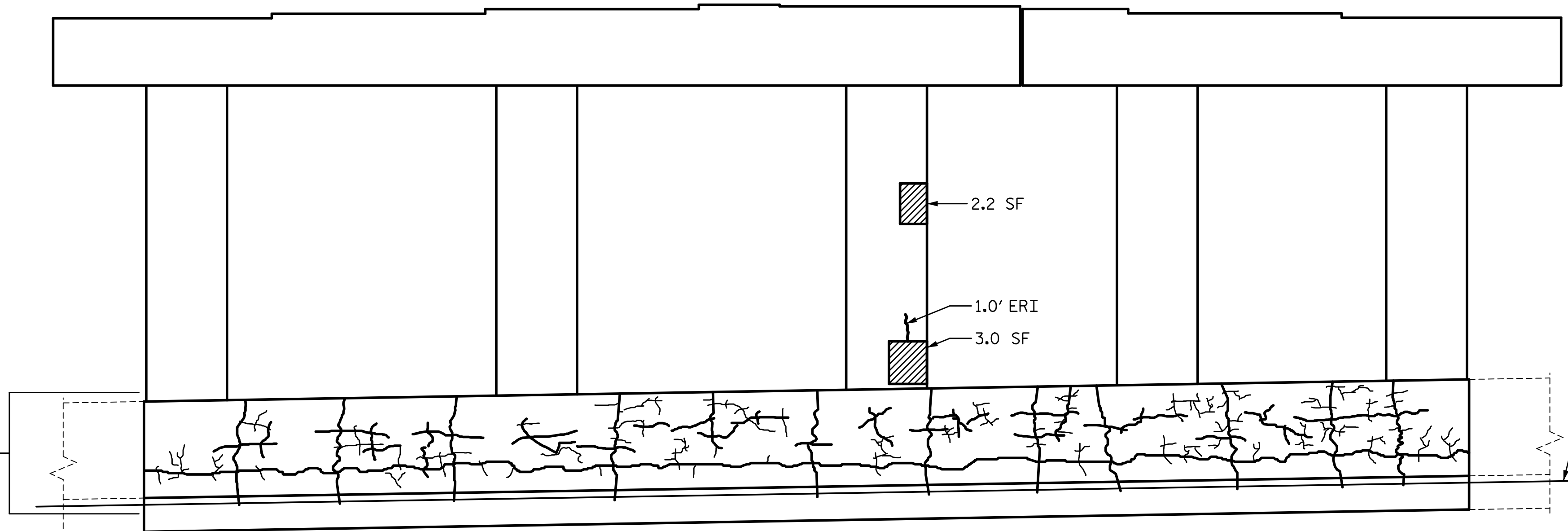
 SHOTCRETE REPAIR  
 ERI — EPOXY RESIN INJECTION

**NOTES:**  
 REPAIR LOCATIONS AND ESTIMATE OF THE QUANTITIES ARE GIVEN WITH THE BEST INFORMATION AVAILABLE. IF ADDITIONAL REPAIRS NOT SHOWN ON THE DRAWINGS ARE DEEMED NECESSARY BY THE INSPECTOR OR ENGINEER THE CONTRACTOR SHALL NOTE ON THE DRAWINGS THE APPROXIMATE LOCATION AND DESCRIPTION OF THE REPAIRS AND ADJUST THE ACTUAL QUANTITIES ENTERED INTO THE REPAIR QUANTITY TABLE.  
 FOR SUBSTRUCTURE REPAIR DETAIL, SEE "SUBSTRUCTURE REPAIR DETAIL" SHEET.  
 FOR EPOXY RESIN INJECTION, SEE SPECIAL PROVISIONS.  
 FOR SHOTCRETE REPAIRS, SEE SPECIAL PROVISIONS.  
 SHOTCRETE REPAIRS MAY BE REPLACED WITH CONCRETE REPAIRS WITH THE APPROVAL OF THE ENGINEER.  
 FOR CONCRETE REPAIRS, SEE SPECIAL PROVISIONS.  
 THE CONTRACTOR SHALL CLEAN AND EPOXY COAT PAINT THE TOP SURFACE OF BENT CAPS.  
 FOR EPOXY COATING, SEE SPECIAL PROVISIONS.  
 SEE SHEET 2 OF 2 FOR "REPAIR QUANTITY TABLE".



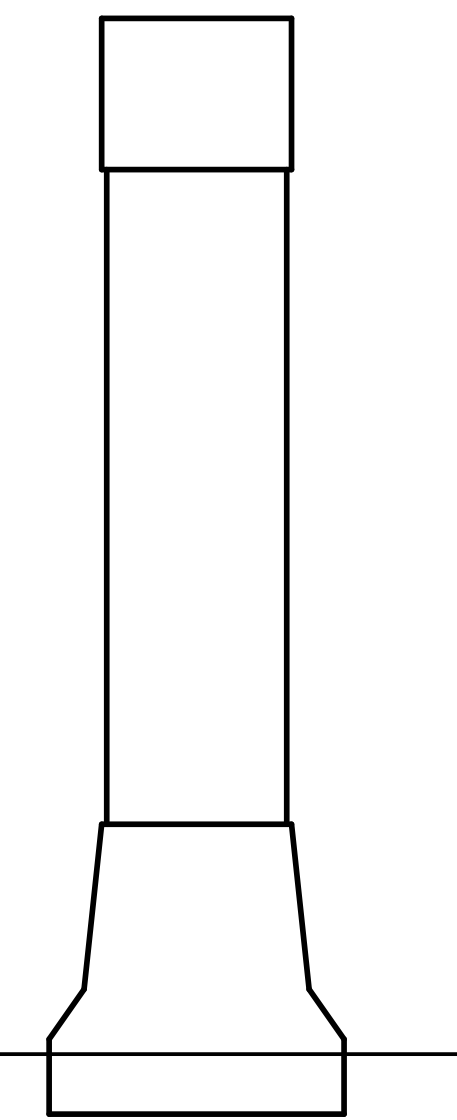
**PLAN**  
TOP OF CAP

SPAN C  
  
SPAN B

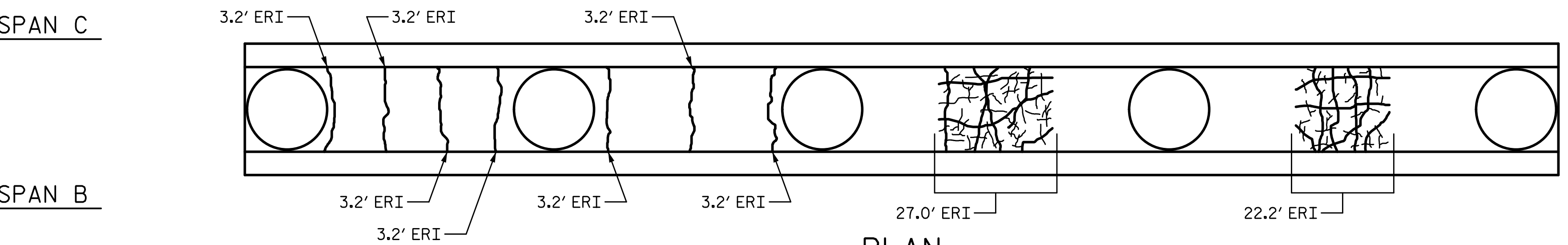


**ELEVATION**

SPAN B FACE  
MAP CRACKING IS SHOWN FOR REPRESENTATION PURPOSES



**END VIEW**  
WEST FACE



**PLAN**

TOP OF DOUBLE FACE CONCRETE MEDIAN BARRIER  
LOOKING DOWN

SPAN C  
  
SPAN B

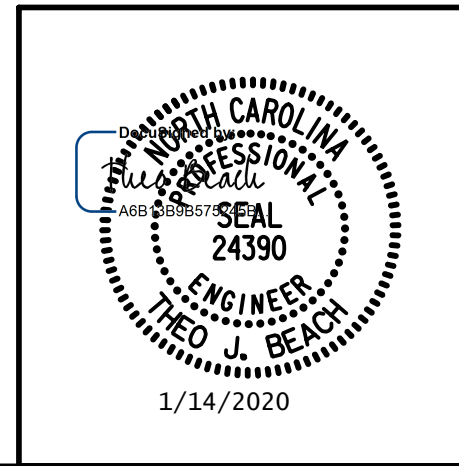
PROJECT NO. I-5711  
ALAMANCE COUNTY  
 STATION: STA. 27+02.26 -L-

SHEET 1 OF 2

STATE OF NORTH CAROLINA  
 DEPARTMENT OF TRANSPORTATION  
 RALEIGH  
 PRESERVATION

**BENT 2**

PLANS PREPARED BY:  
  
 SIMPSON ENGINEERS & ASSOCIATES  
 5640 Dillard Drive  
 Suite 200  
 Cary, NC 27518  
 (919) 852-0468  
 (919) 852-0598 (Fax)  
 www.simpsonengr.com  
 LICENSURE NO. C-2521



REVISIONS						SHEET NO.
NO.	BY:	DATE:	NO.	BY:	DATE:	S-84
1			3			TOTAL SHEETS
2			4			89

DRAWN BY: T. BANKOVICH DATE: 1-20  
 CHECKED BY: T. BEACH DATE: 1-20  
 DESIGN ENGINEER OF RECORD: T. BEACH DATE: 1-20

**DOCUMENT NOT CONSIDERED FINAL  
 UNLESS ALL SIGNATURES COMPLETED**