


1/14/2020 10:06:37 AM G:\Projects\2017\I-5711\Structures\Preservation\Drawings\401\_I5711\_SMU\_BIR\_000177.dgn

 SHOTCRETE REPAIR  
 ERI — EPOXY RESIN INJECTION

**NOTES:**

REPAIR LOCATIONS AND ESTIMATE OF THE QUANTITIES ARE GIVEN WITH THE BEST INFORMATION AVAILABLE. IF ADDITIONAL REPAIRS NOT SHOWN ON THE DRAWINGS ARE DEEMED NECESSARY BY THE INSPECTOR OR ENGINEER THE CONTRACTOR SHALL NOTE ON THE DRAWINGS THE APPROXIMATE LOCATION AND DESCRIPTION OF THE REPAIRS AND ADJUST THE ACTUAL QUANTITIES ENTERED INTO THE REPAIR QUANTITY TABLE.

FOR SUBSTRUCTURE REPAIR DETAIL, SEE "SUBSTRUCTURE REPAIR DETAIL" SHEET.

FOR EPOXY RESIN INJECTION, SEE SPECIAL PROVISIONS.

FOR SHOTCRETE REPAIRS, SEE SPECIAL PROVISIONS.

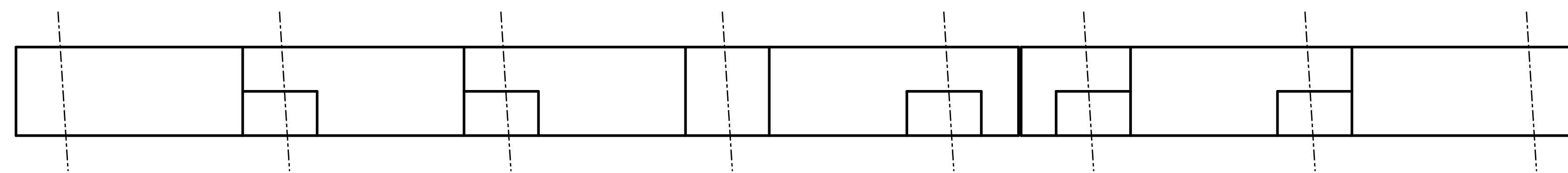
SHOTCRETE REPAIRS MAY BE REPLACED WITH CONCRETE REPAIRS WITH THE APPROVAL OF THE ENGINEER.

FOR CONCRETE REPAIRS, SEE SPECIAL PROVISIONS.

THE CONTRACTOR SHALL CLEAN AND EPOXY COAT PAINT THE TOP SURFACE OF BENT CAPS.

FOR EPOXY COATING, SEE SPECIAL PROVISIONS.

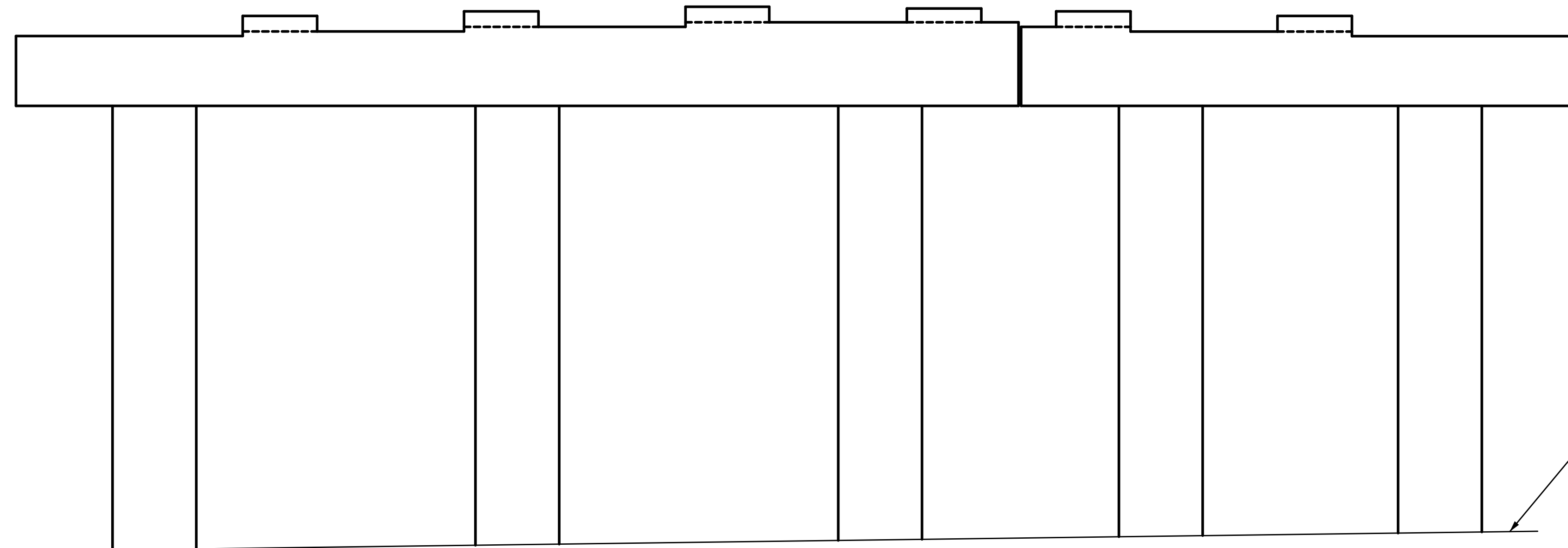
SEE SHEET 2 OF 2 FOR "REPAIR QUANTITY TABLE".



SPAN B

SPAN A

PLAN  
TOP OF CAP



CONCRETE  
SLOPE  
PROTECTION

ELEVATION  
SPAN A FACE

END VIEW  
WEST FACE

PROJECT NO. I-5711  
ALAMANCE COUNTY  
 STATION: STA. 27+02.26 -L-

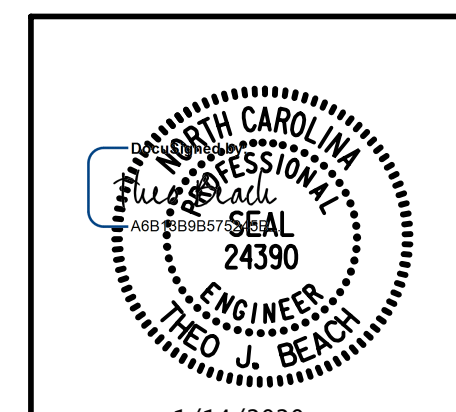
SHEET 1 OF 2

STATE OF NORTH CAROLINA  
 DEPARTMENT OF TRANSPORTATION  
 RALEIGH  
 PRESERVATION

BENT 1

PLANS PREPARED BY:

**SEA**  
 IMPSON ENGINEERS ASSOCIATES  
 5640 Dillard Drive  
 Suite 200  
 Cary, NC 27518  
 (919) 852-0468  
 (919) 852-0598 (Fax)  
 www.simpsonengr.com



LICENSURE NO. C-2521

DRAWN BY: T. BANKOVICH DATE: 1-20  
 CHECKED BY: T. BEACH DATE: 1-20  
 DESIGN ENGINEER OF RECORD: T. BEACH DATE: 1-20

REVISIONS						SHEET NO.
NO.	BY:	DATE:	NO.	BY:	DATE:	S-82
1			3			TOTAL SHEETS
2			4			89

**DOCUMENT NOT CONSIDERED FINAL  
 UNLESS ALL SIGNATURES COMPLETED**