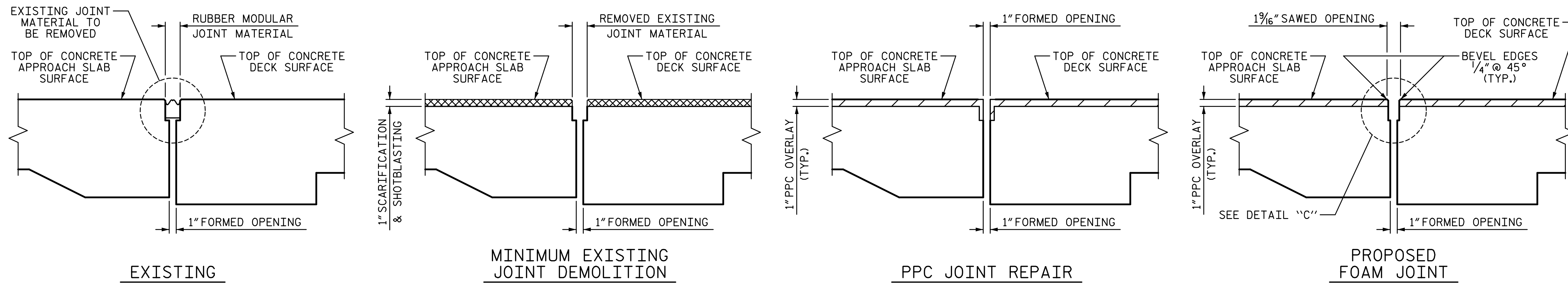
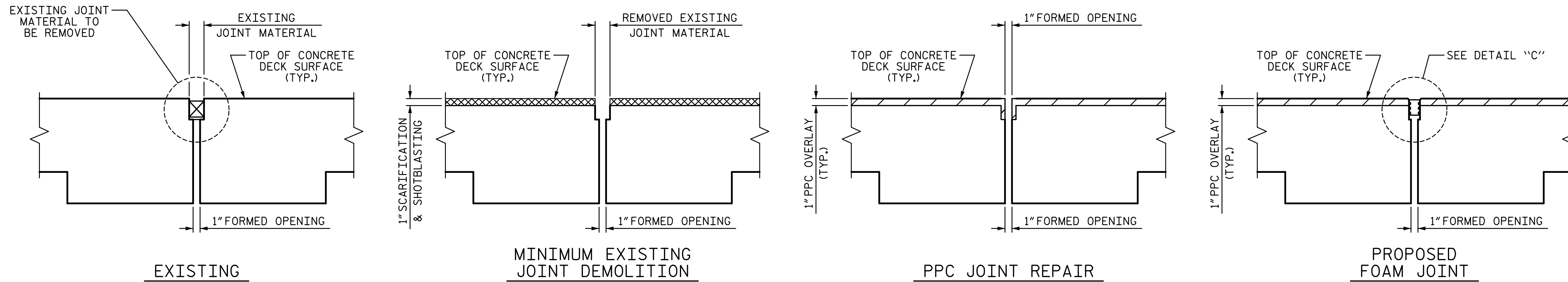


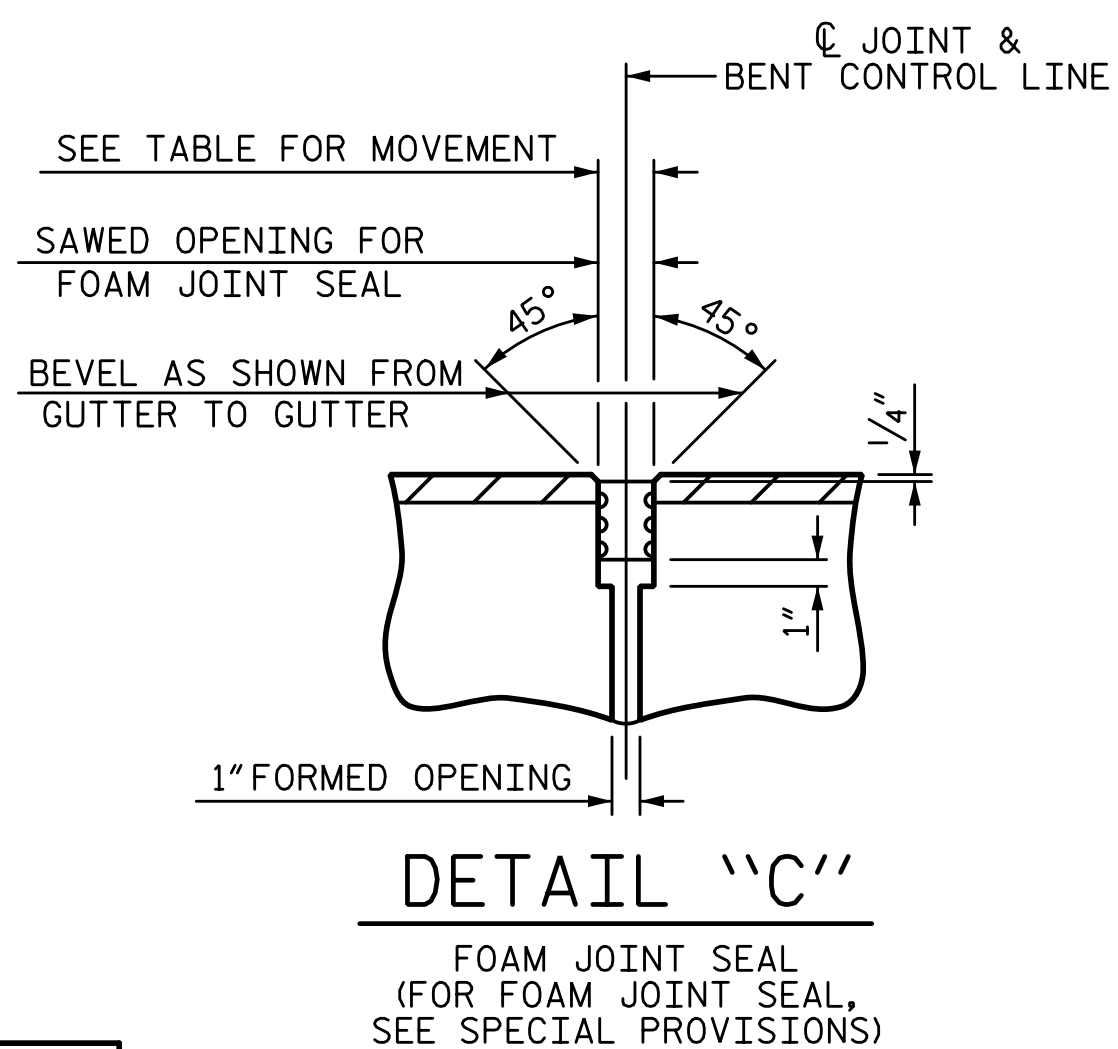
NOTES:
 FOR FOAM JOINT SEALS, SEE SPECIAL PROVISIONS.
 THE NOMINAL UNCOMPRESSED SEAL WIDTH OF THE
 FOAM JOINT SEAL SHALL BE 2" AT THE END BENTS,
 AND BENTS 1, 2 AND 3.



JOINT INSTALLATION SEQUENCE AT END BENTS
 END BENT 1 SHOWN, END BENT 2 SIMILAR



JOINT INSTALLATION SEQUENCE AT BENTS
 BENTS 1, 2, & 3



MOVEMENT AND SETTING AT JOINT			
LOCATION	PERPENDICULAR JOINT OPENING AT 45° F	PERPENDICULAR JOINT OPENING AT 60° F	PERPENDICULAR JOINT OPENING AT 90° F
BENT 1	1 5/8"	1 7/8"	1 11/16"
BENT 2	1 9/8"	1 7/8"	1 9/16"
BENT 3	1 1/2"	1 3/8"	1 5/16"

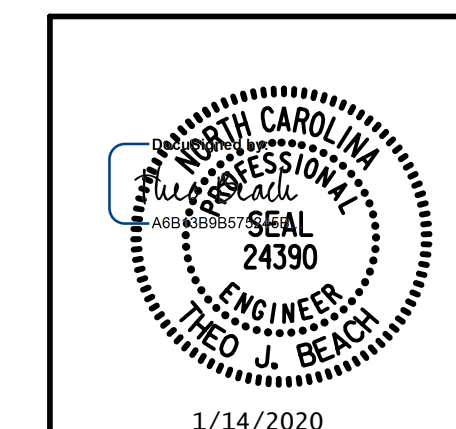
PROJECT NO. I-5711
ALAMANCE COUNTY
 STATION: STA. 27+02.26 -L-

STATE OF NORTH CAROLINA
 DEPARTMENT OF TRANSPORTATION
 RALEIGH
 PRESERVATION

JOINT REPAIR DETAILS

REVISIONS						SHEET NO.
NO.	BY:	DATE:	NO.	BY:	DATE:	S-79
1			3			TOTAL SHEETS
2			4			89

PLANS PREPARED BY:
SE & A
 SIMPSON ENGINEERS & ASSOCIATES
 5640 Dillard Drive
 Suite 200
 Cary, NC 27518
 (919) 852-0468
 (919) 852-0538 (Fax)
 www.simpsonengr.com
 LICENSURE NO. C-2521



1/14/2020 10:06:36 AM G:\Projects\2017\I-5711\Structures\Preservation\Drawings\401_I5711_SMU_JTR_000177.dgn

DRAWN BY: T. BANKOVICH DATE: 1-20
 CHECKED BY: T. BEACH DATE: 1-20
 DESIGN ENGINEER OF RECORD: T. BEACH DATE: 1-20

**DOCUMENT NOT CONSIDERED FINAL
 UNLESS ALL SIGNATURES COMPLETED**