

1/14/2020 10:06:35 AM G:\Projects\2017\I-5711\Structures\Preservation\Drawings\401_I5711_SMU_GDPR_000177.dgn

NOTES:

EXISTING DIMENSIONS AND BRIDGE CONDITION ARE FROM BEST INFORMATION AVAILABLE. THE CONTRACTOR SHALL FIELD VERIFY THE INFORMATION SHOWN ON THE PLANS AND NOTIFY THE ENGINEER IF ACTUAL DIMENSIONS AND CONDITIONS DIFFER.

EXISTING JOINTS SHALL BE SEALED PRIOR TO PPC OVERLAY

LONGITUDINAL CONTRUCTION JOINTS FOR PPC OVERLAY SHALL BE LOCATE ALONG THE CENTERLINE OR EDGE OF TRAVEL LANES.

FOR SUBMITTAL OF WORKING DRAWINGS, SEE SPECIAL PROVISIONS.

FOR FALSEWORK AND FORMWORK, SEE SPECIAL PROVISIONS.

FOR CRANE SAFETY, SEE SPECIAL PROVISIONS.

FOR GROUT FOR STRUCTURES, SEE SPECIAL PROVISIONS.

FOR CONCRETE DECK REPAIR FOR PPC OVERLAY, PPC MATERIALS, PLACING AND FINISHING PPC OVERLAY, SEE "POLYESTER POLYMER CONCRETE BRIDGE DECK OVERLAY" SPECIAL PROVISION.

FOR SCARIFYING BRIDGE DECK, SHOTBLASTING BRIDGE DECK, AND CLASS II SURFACE PROTECTION, SEE "OVERLAY SURFACE PREPARATION FOR POLYESTER POLYMER CONCRETE" SPECIAL PROVISION.

FOR EPOXY COATING, SEE SPECIAL PROVISIONS.

FOR EPOXY RESIN INJECTION, SEE SPECIAL PROVISIONS.

FOR SHOTCRETE REPAIRS, SEE SPECIAL PROVISIONS.

FOR CONCRETE REPAIRS, SEE SPECIAL PROVISIONS.

FOR MAINTENANCE AND PROTECTION OF TRAFFIC BENEATH EXISTING STRUCTURE, SEE SPECIAL PROVISIONS.

FOR OTHER DESIGN DATA AND GENERAL NOTES. SEE STANDARD NOTES.

TOTAL BILL OF MATERIAL

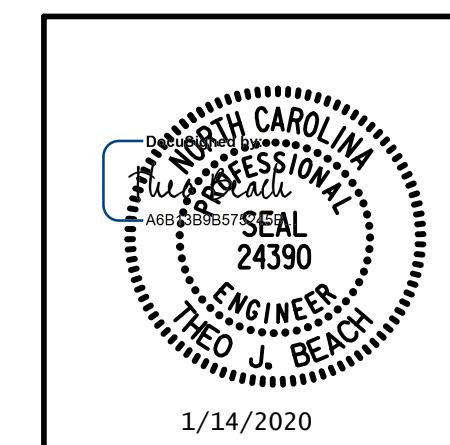
BRIDGE NO.	GROOVING BRIDGE FLOORS	CLASS A CONCRETE	EPOXY COATED REINFORCING STEEL	CLASS II SURFACE PREPARATION	SHOTCRETE REPAIRS	EPOXY RESIN INJECTION	FOAM JOINT SEAL	POLYESTER POLYMER CONCRETE MATERIALS	EPOXY COATING	CONCRETE DECK REPAIR FOR POLYESTER POLYMER CONCRETE OVERLAY	PLACING AND FINISHING POLYESTER POLYMER CONCRETE OVERLAY	SCARIFYING BRIDGE DECK	SHOTBLASTING BRIDGE DECK
	SF	SY	LB	SY	CF	LF	LS	CY	SF	SY	SY	SY	SY
000177	12,377.6	16.2	911	4.2	6.4	1,112.0	LS	40.7	647.4	4.2	1,464.5	1,464.5	1,464.5
TOTAL	12,377.6	16.2	911	4.2	6.4	1,112.0	LS	40.7	647.4	4.2	1,464.5	1,464.5	1,464.5

PROJECT NO. I-5711
ALAMANCE COUNTY
 STATION: STA. 27+02.26 -L-

SHEET 2 OF 2

PLANS PREPARED BY:

SEA & A
 SIMPSON
 ENGINEERS
 ASSOCIATES
 5640 Dillard Drive
 Suite 200
 Cary, NC 27518
 (919) 852-0468
 (919) 852-0598 (Fax)
 www.simpsonengr.com
 LICENSURE NO. C-2521



STATE OF NORTH CAROLINA
 DEPARTMENT OF TRANSPORTATION
 RALEIGH
 PRESERVATION
GENERAL DRAWING
 FOR BRIDGE ON MEBANE OAKS
 ROAD OVER I-40/I-85
 BETWEEN SR 2033 AND SR 2211

DRAWN BY: T. BANKOVICH DATE: 1-20
 CHECKED BY: T. BEACH DATE: 1-20
 DESIGN ENGINEER OF RECORD: T. BEACH DATE: 1-20

REVISIONS						SHEET NO.
NO.	BY:	DATE:	NO.	BY:	DATE:	S-76
1			3			TOTAL SHEETS
2			4			89

**DOCUMENT NOT CONSIDERED FINAL
 UNLESS ALL SIGNATURES COMPLETED**