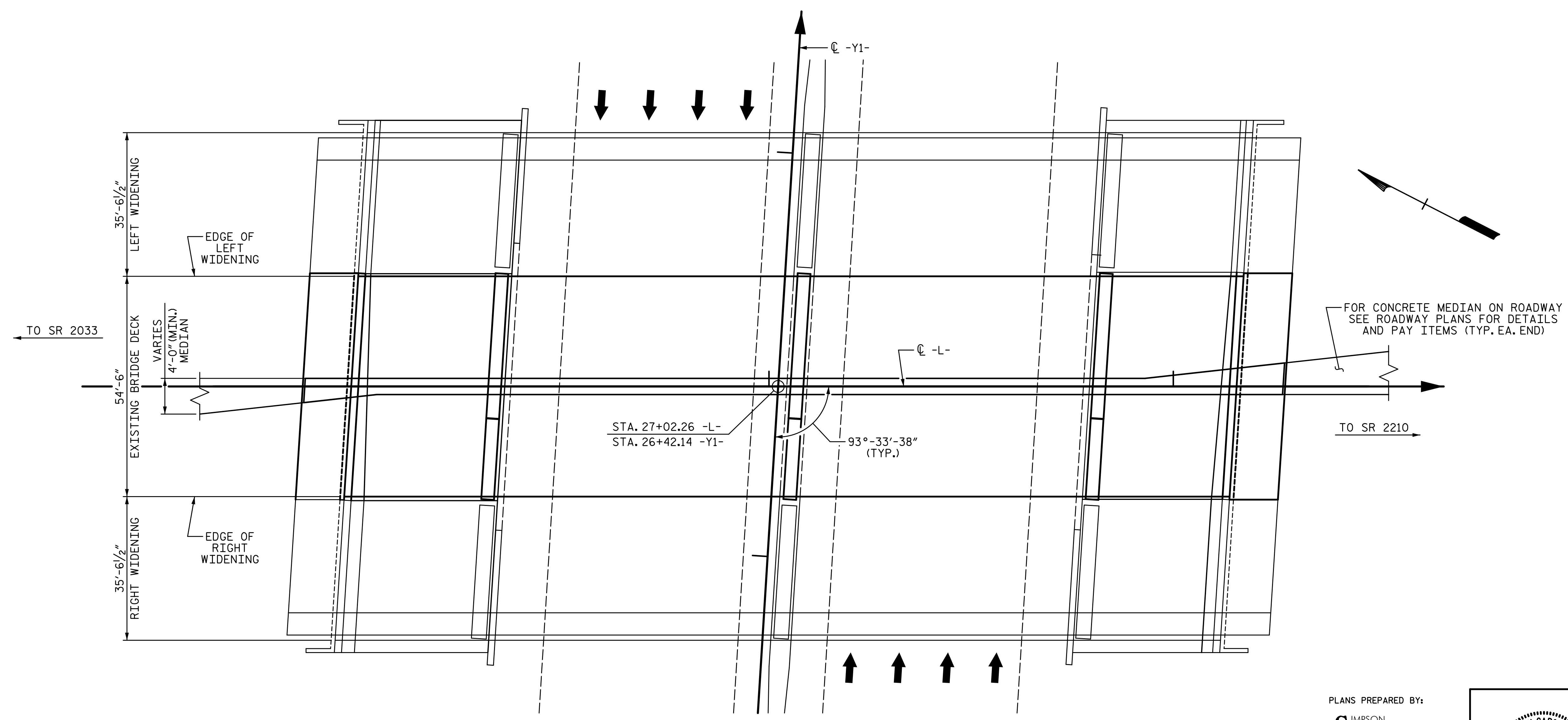


SECTION ALONG \bar{C} SURVEY -L-
 (SECTIONS @ END BENTS AND BENTS ARE @ RIGHT ANGLES)

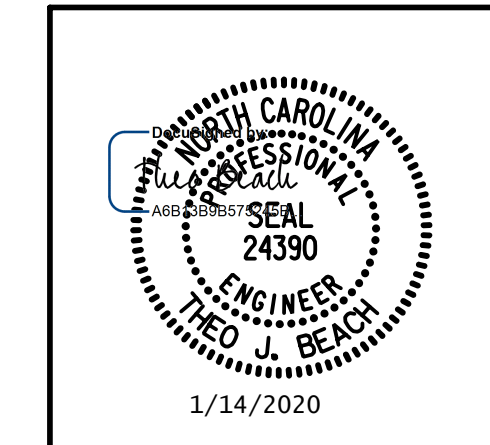


PLAN

1/14/2020 10:06:34 AM G:\Projects\2017\I-5711\Structures\Preservation\Drawings\401_I5711_SMU_GDPR_000177.dgn

DRAWN BY: T. BANKOVICH DATE: 1-20
 CHECKED BY: T. BEACH DATE: 1-20
 DESIGN ENGINEER OF RECORD: T. BEACH DATE: 1-20

PLANS PREPARED BY:
SE & A
 SIMPSON ENGINEERS ASSOCIATES
 5640 Dillard Drive
 Suite 200
 Cary, NC 27518
 (919) 852-0468
 (919) 852-0598 (Fax)
 www.simpsonengr.com
 LICENSURE NO. C-2521



PROJECT NO. I-5711
ALAMANCE COUNTY
 STATION: STA. 27+02.26 -L-

SHEET 1 OF 2
 STATE OF NORTH CAROLINA
 DEPARTMENT OF TRANSPORTATION
 RALEIGH
 PRESERVATION
GENERAL DRAWING
 FOR BRIDGE ON MEBANE OAKS
 ROAD OVER I-40/I-85
 BETWEEN SR 2033 AND SR 2210

REVISIONS						SHEET NO.
NO.	BY:	DATE:	NO.	BY:	DATE:	S-75
1			3			TOTAL SHEETS
2			4			89

**DOCUMENT NOT CONSIDERED FINAL
 UNLESS ALL SIGNATURES COMPLETED**