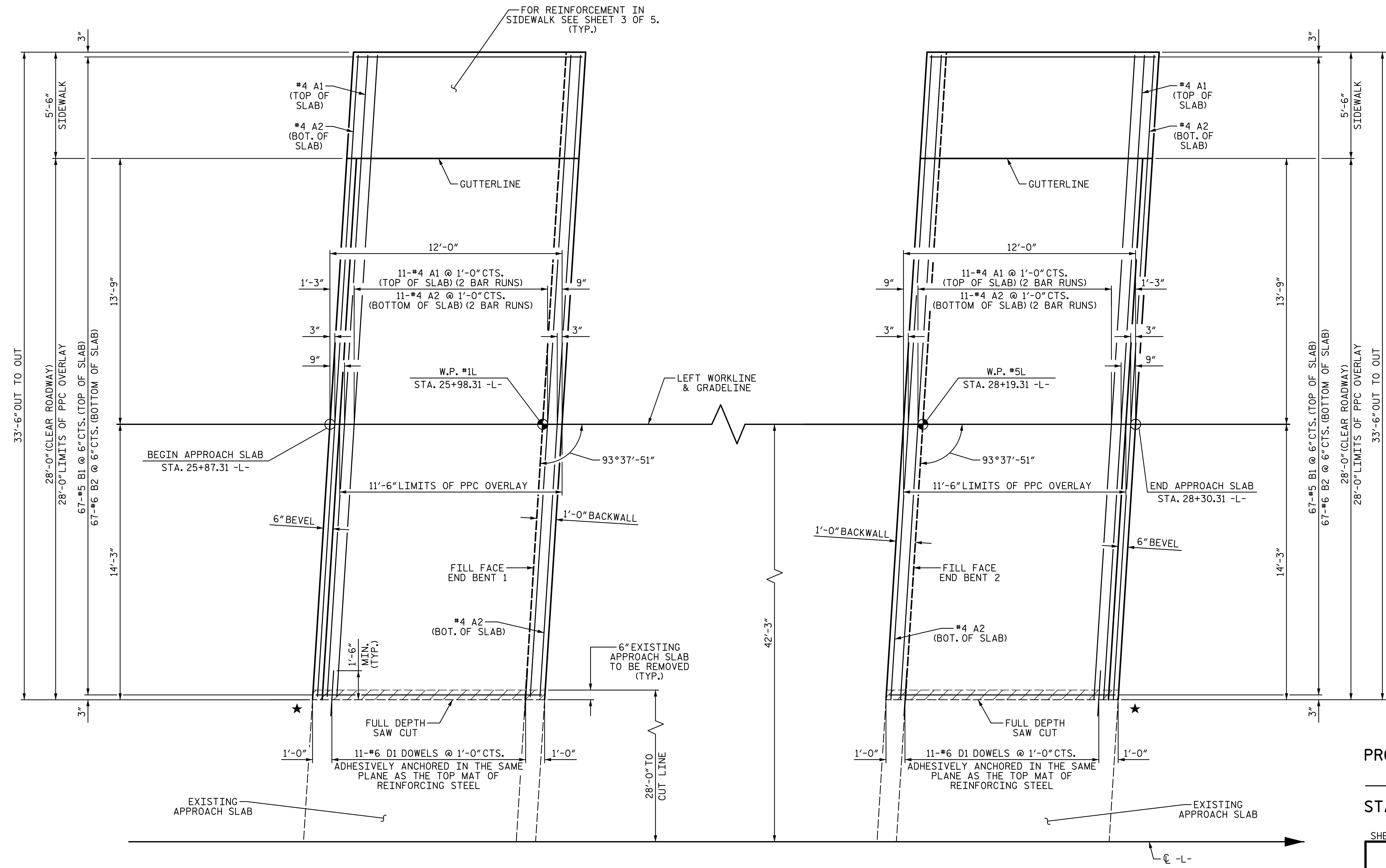


NOTES:
 FOR PPC OVERLAY QUANTITIES,
 SEE BILL OF MATERIAL SHEET
 1 OF 2.



PLAN @ END BENT 1

★ REMOVE EXISTING CONCRETE FLUME.
 NOT SHOWN FOR CLARITY.

PLAN @ END BENT 2

★ REMOVE EXISTING CONCRETE FLUME.
 NOT SHOWN FOR CLARITY.

PROJECT NO. I-5711
ALAMANCE COUNTY
 STATION: STA. 27+02.26 -L-

SHEET 1 OF 5

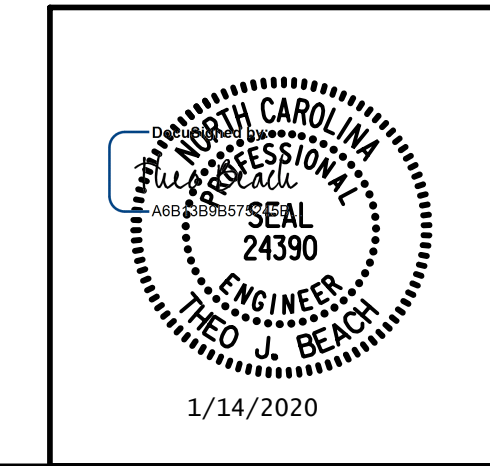
STATE OF NORTH CAROLINA
 DEPARTMENT OF TRANSPORTATION
 RALEIGH

BRIDGE APPROACH SLAB

LEFT WIDENING

REVISIONS						SHEET NO.
NO.	BY:	DATE:	NO.	BY:	DATE:	S-70
1			3			TOTAL SHEETS
2			4			89

PLANS PREPARED BY:
S&A
 IMPSON ENGINEERS ASSOCIATES
 5640 Dillard Drive
 Suite 200
 Cary, NC 27518
 (919) 852-0468
 (919) 852-0598 (Fax)
 www.slmpsonengr.com
 LICENSURE NO. C-2521



DRAWN BY: S.D. COOPER DATE: 1-20
 CHECKED BY: T. BEACH DATE: 1-20
 DESIGN ENGINEER OF RECORD: T. BEACH DATE: 1-20

**DOCUMENT NOT CONSIDERED FINAL
 UNLESS ALL SIGNATURES COMPLETED**

1/14/2020 10:06:33 AM G:\Projects\2017\I-5711\Structures\Drawings\Final\401-I5711-SMJ_AS_000177.dgn