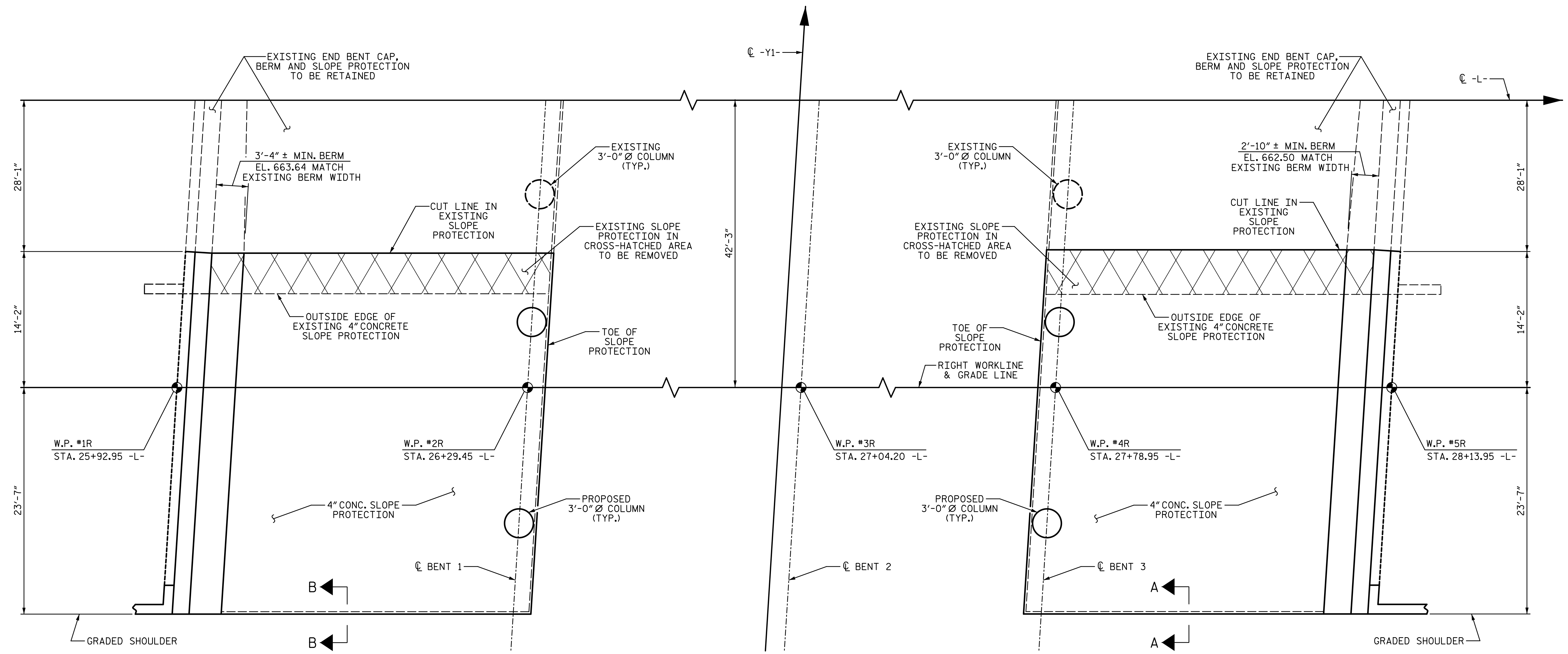


1/14/2020 10:06:32 AM G:\Projects\2017\I-5711\Structures\Drawings\Final\4015711_SMJ_SP_000177.dgn



Ⓞ END BENT 1

Ⓞ END BENT 2

PLAN OF SLOPE PROTECTION

(FOR SECTIONS A-A & B-B, SEE SHEET 3 OF 3)

PROJECT NO. I-5711
ALAMANCE COUNTY
 STATION: STA. 27+02.26 -L-

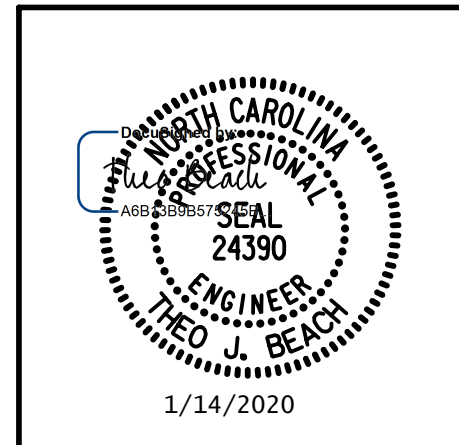
SHEET 2 OF 3

BRIDGE @ STA. 27+04.20 -L-	4" SLOPE PROTECTION	* WELDED WIRE FABRIC 60 INCHES WIDE
	SY	APPROX. LF
END BENT 1 RIGHT	160	300
END BENT 2 RIGHT	160	300

* QUANTITY SHOWN IS BASED ON 5'-0" POURS.

PLANS PREPARED BY:

SEA & A
 IMPSON ENGINEERS & ASSOCIATES
 5640 Dillard Drive
 Suite 200
 Cary, NC 27518
 (919) 852-0468
 (919) 852-0538 (Fax)
 www.slmpsonengr.com
 LICENSURE NO. C-2521



STATE OF NORTH CAROLINA
 DEPARTMENT OF TRANSPORTATION
 RALEIGH

**SLOPE PROTECTION
 DETAILS**
 RIGHT WIDENING

REVISIONS						SHEET NO.
NO.	BY:	DATE:	NO.	BY:	DATE:	S-68
1			3			TOTAL SHEETS
2			4			89

DRAWN BY: S.D. COOPER DATE: 1-20
 CHECKED BY: T. BEACH DATE: 1-20
 DESIGN ENGINEER OF RECORD: T. BEACH DATE: 1-20

**DOCUMENT NOT CONSIDERED FINAL
 UNLESS ALL SIGNATURES COMPLETED**