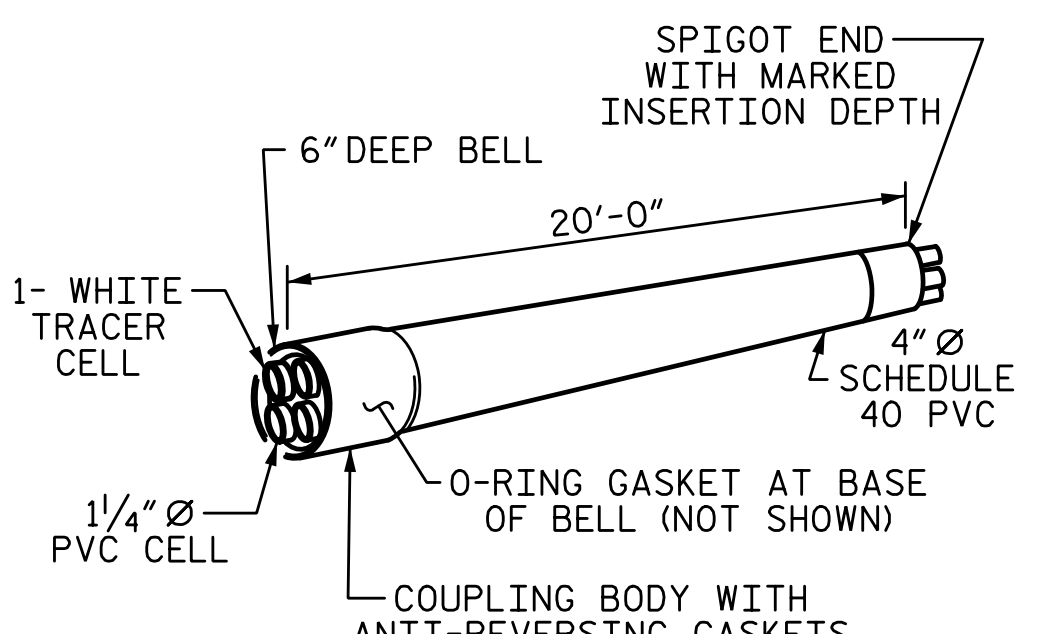
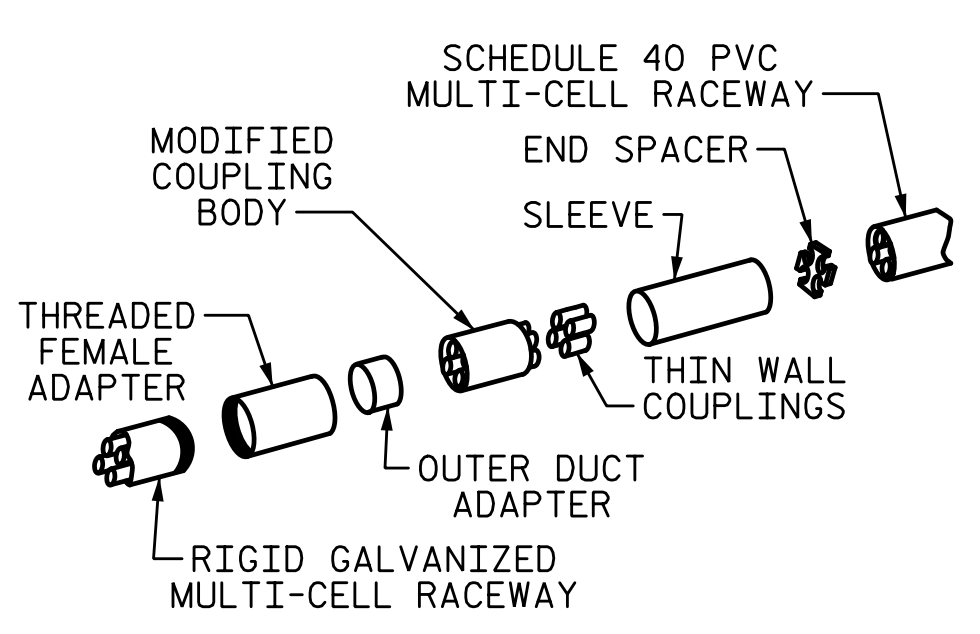


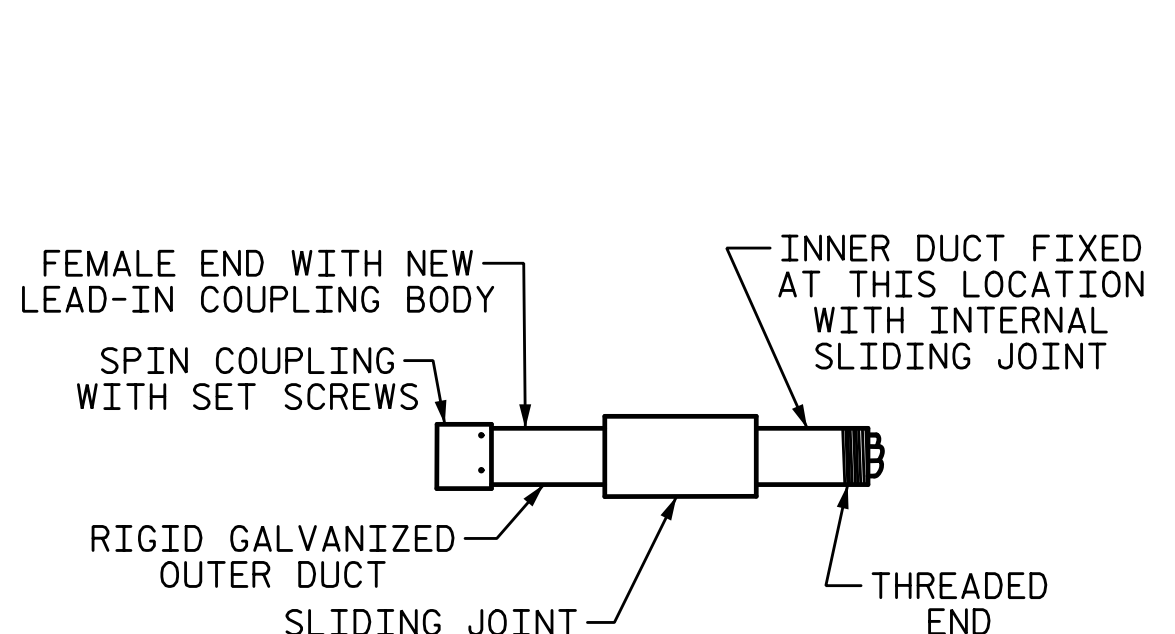
RIGID GALVANIZED (RGC) MULTI-CELL RACEWAY



SCHEDULE 40 PVC MULTI-CELL RACEWAY



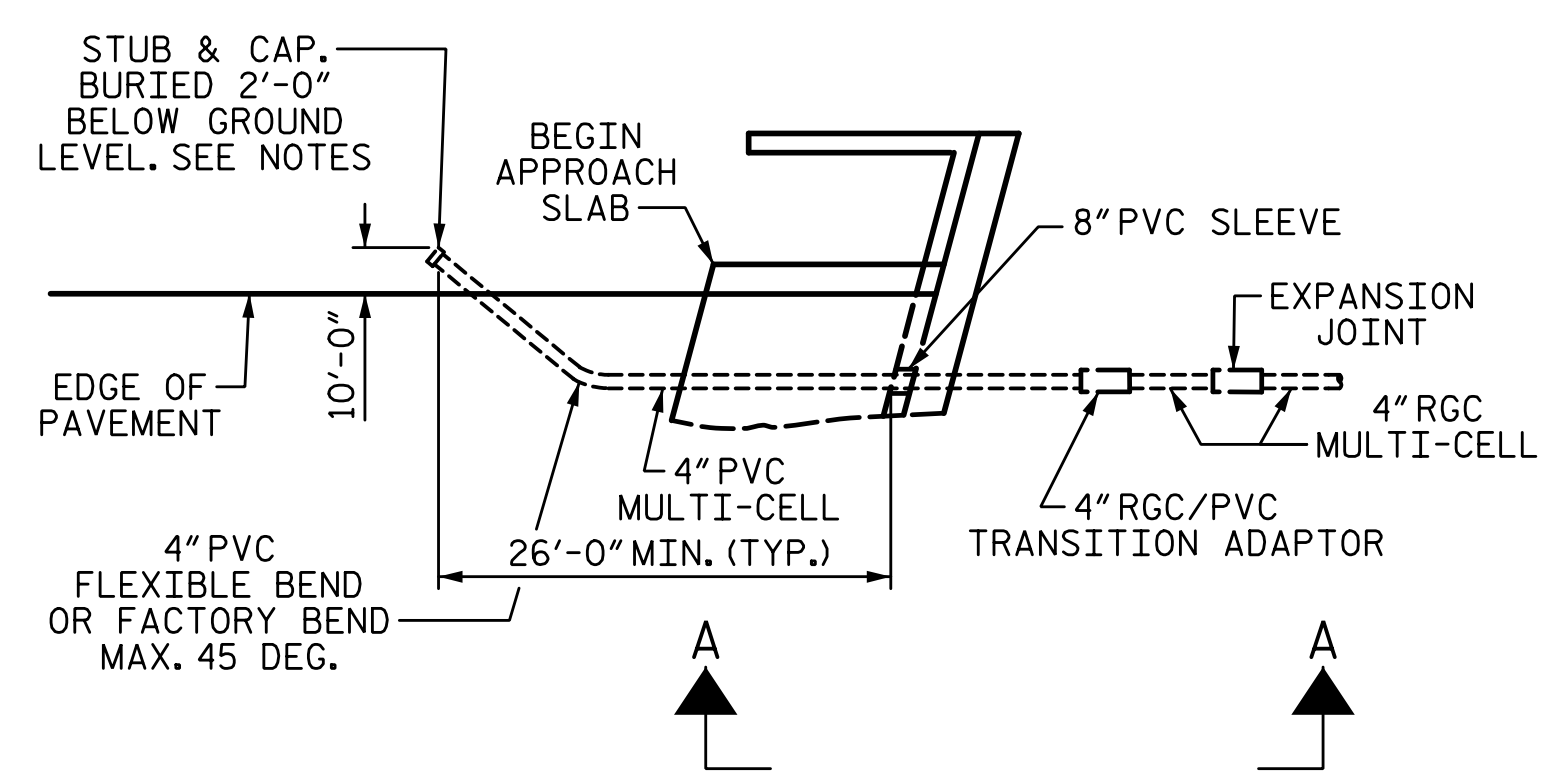
TRANSITION ADAPTER



EXPANSION JOINT FITTING

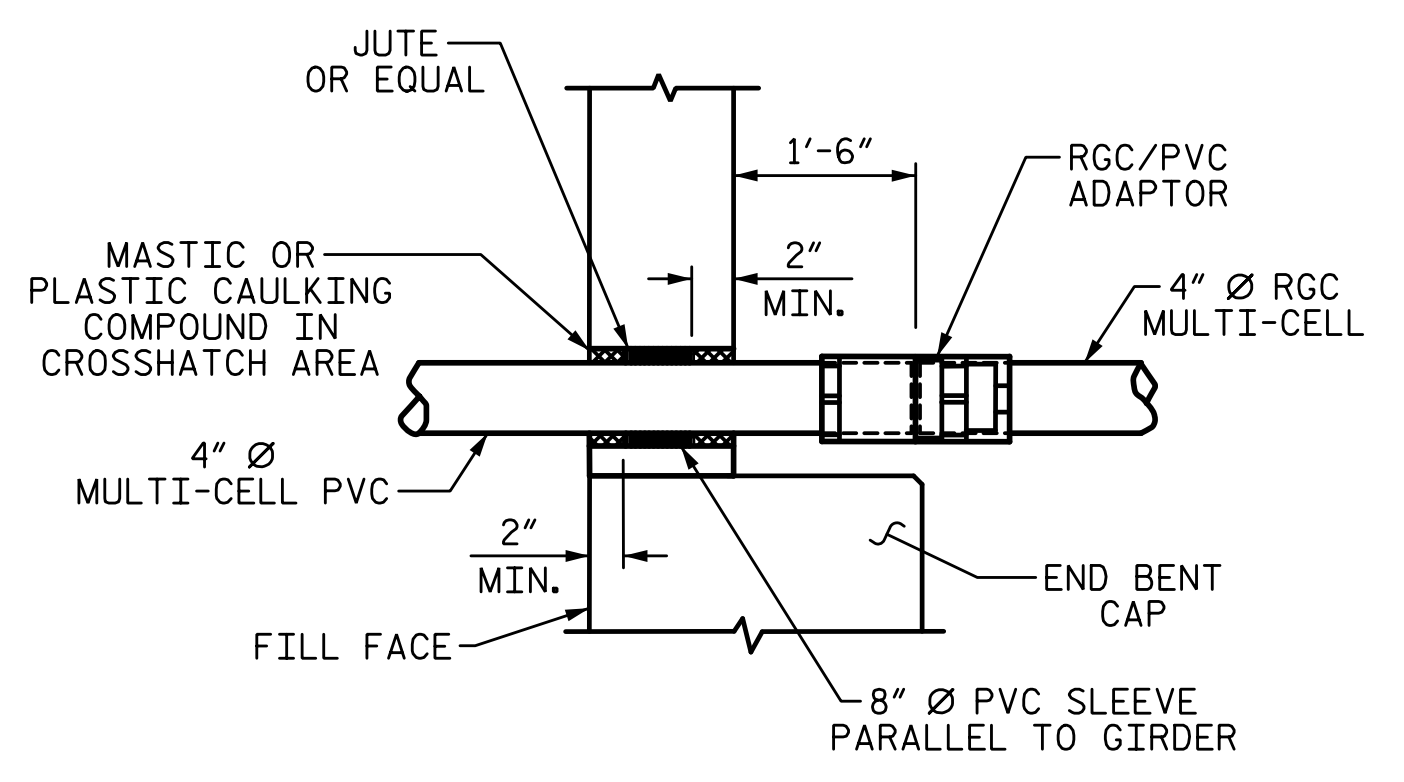
NOTES:

- THE CONTRACTOR SHALL BE RESPONSIBLE FOR DETERMINING THE TOTAL QUANTITY OF CONDUIT NEEDED TO COMPLETE THE WORK AND THAT THE CONDUIT(S) ARE PLACED AT THE NOTED DIMENSION AND ABOVE THE BOTTOM OF THE GIRDER.
- THE INSTALLATION OF THE CONDUIT SYSTEM SHALL BE PAID FOR AS LUMP SUM. THE PRICE SHALL INCLUDE ALL CONDUIT, HANGERS, STABILIZERS, EXPANSION JOINTS, CONCRETE INSERTS, PVC SLEEVES AND ALL NECESSARY HARDWARE TO COMPLETE THE WORK.
- THE CONTRACTOR SHALL FIELD VERIFY THAT THE CONDUIT SYSTEM IS NOT IN CONFLICT WITH THE GUARDRAIL POSTS.
- SEE DETAIL "C" FOR HANGER ASSEMBLY INSTALLATION.
- INSTALL SLEEVES PARALLEL TO GIRDERS. SEE DETAIL "B" FOR SLEEVE INSTALLATION.
- PROVIDE TRANSITION ADAPTOR (AND EXPANSION JOINT) FOR CONDUIT AT END BENT 1 (AND END BENT 2).
- INSTALL STABILIZER'S MIDWAY BETWEEN DECK EXPANSION JOINTS. STABILIZER CAN NOT BE USED INSTEAD OF A HANGER ASSEMBLY.
- INSTALL EXPANSION JOINTS AT BENT 1, BENT 2, AND BENT 3.
- THE CONCRETE SCREW INSERT SHALL HAVE A ROD SIZE OF 5/8" AND A PULL FORCE OF 1260 LBS.
- FOR ELECTRICAL CONDUIT SYSTEM FOR SIGNALS, SEE SPECIAL PROVISIONS.



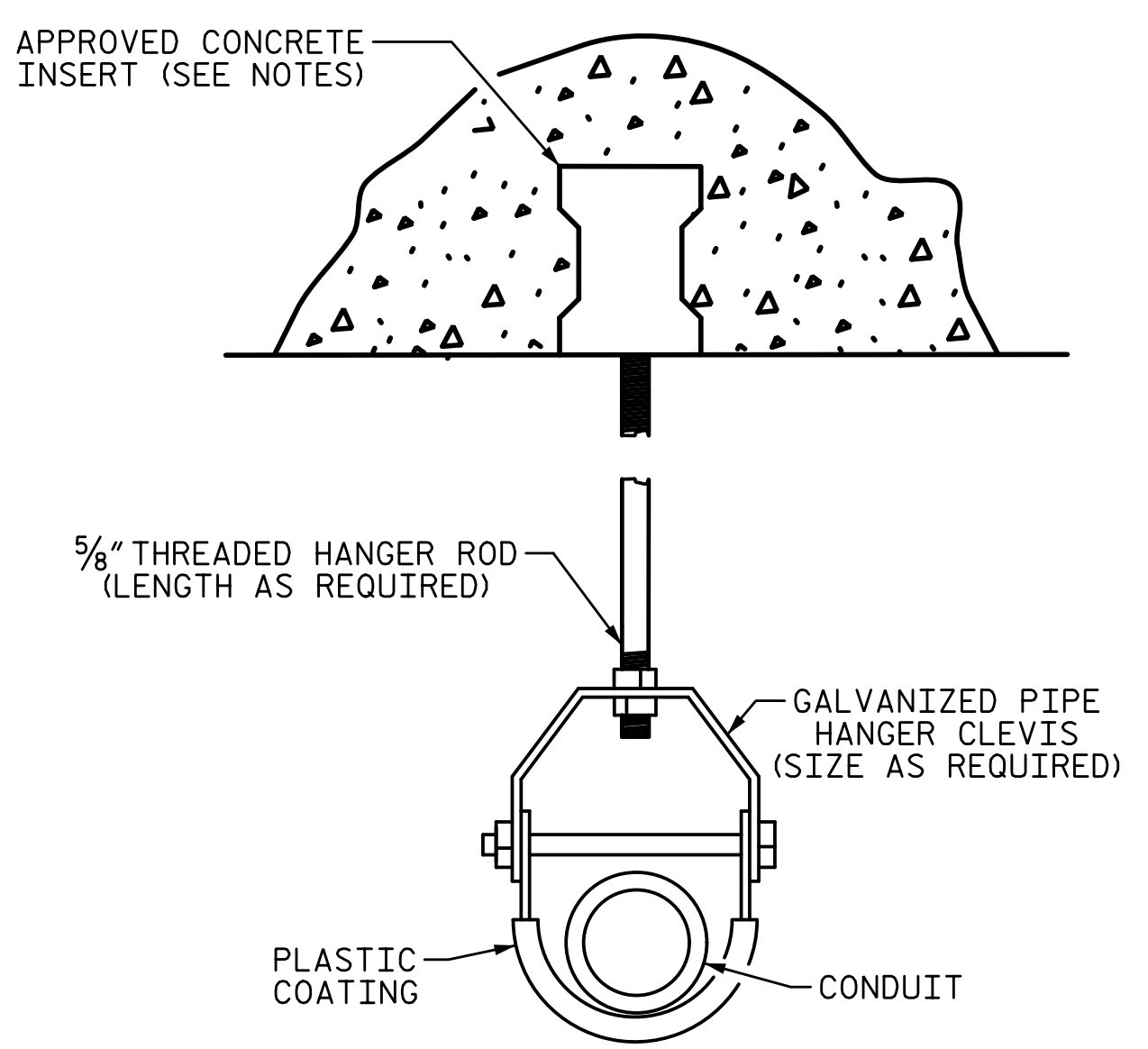
DETAIL "A"

TERMINATION OF CONDUIT AT WING WALL
END BENT 1 SHOWN, END BENT 2 SIMILAR



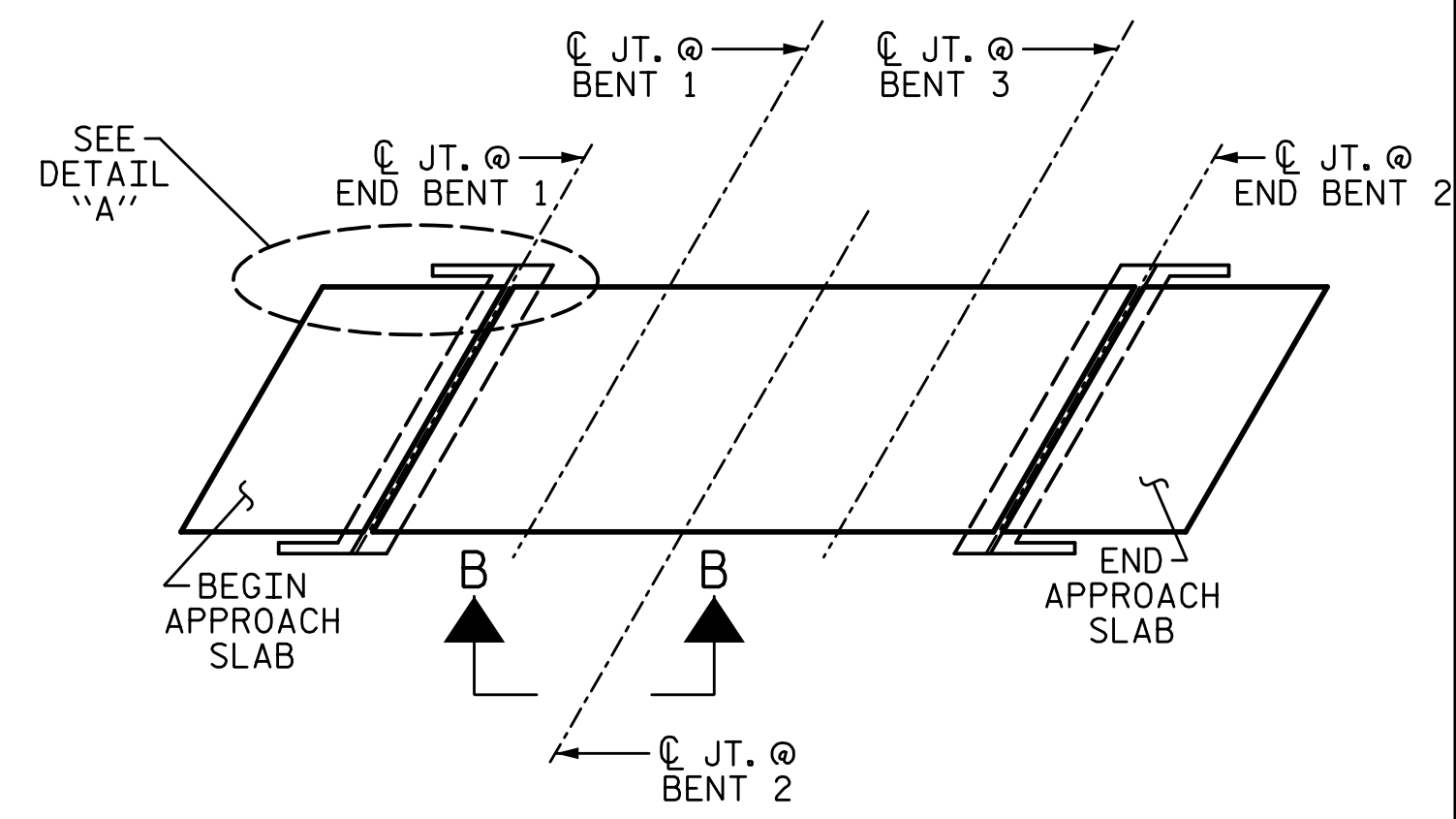
DETAIL "B"

PVC SLEEVE INSTALLATION & RGC/PVC
ADAPTOR AT BACKWALL.

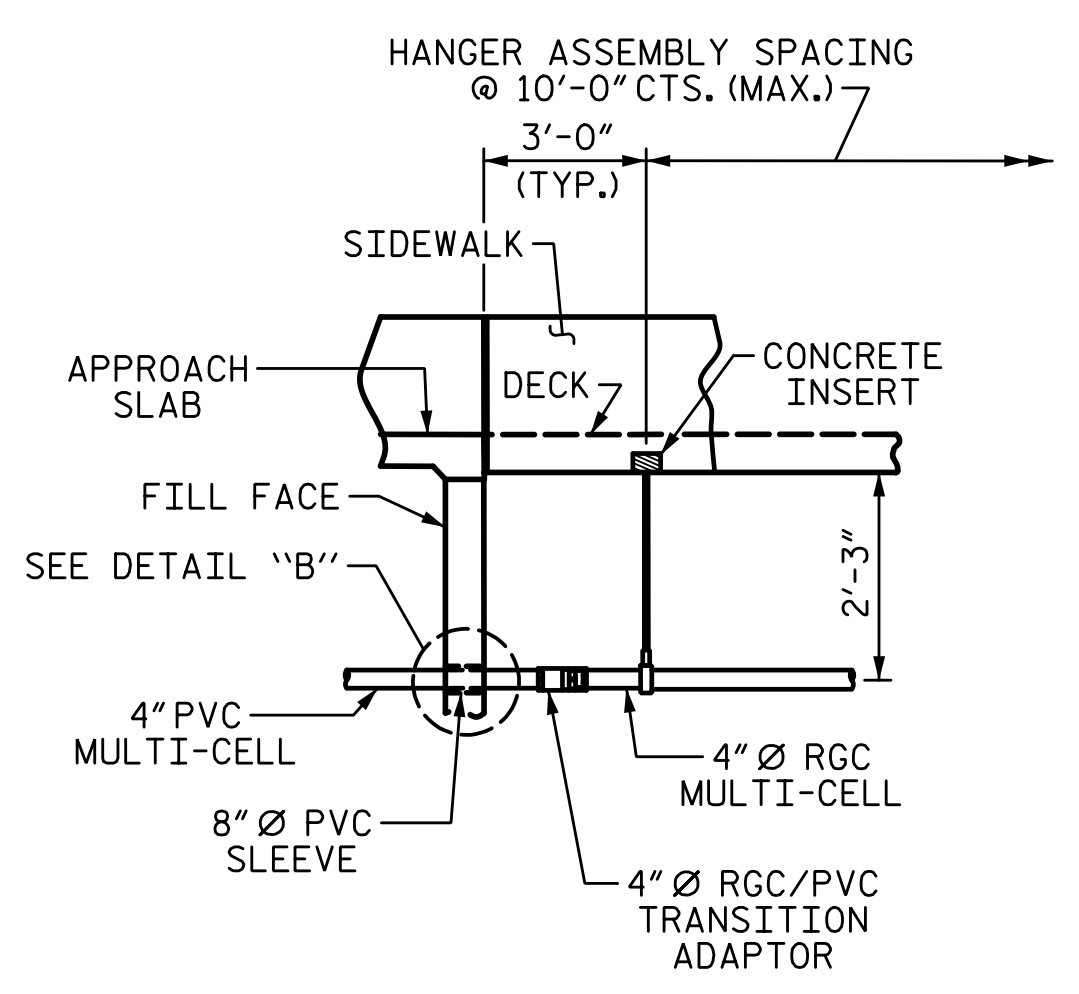


DETAIL "C"

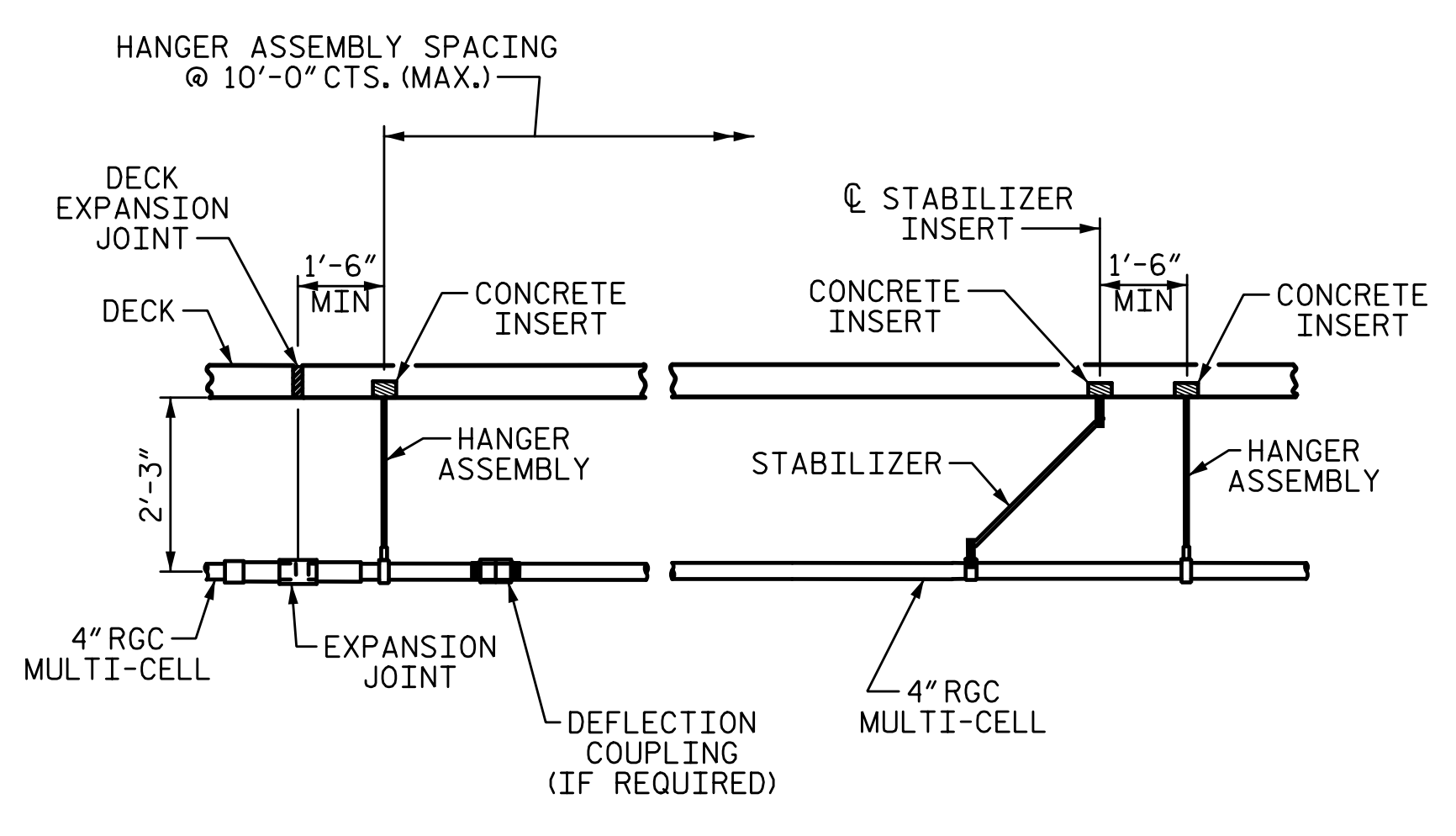
HANGER ASSEMBLY



CONDUIT LAYOUT

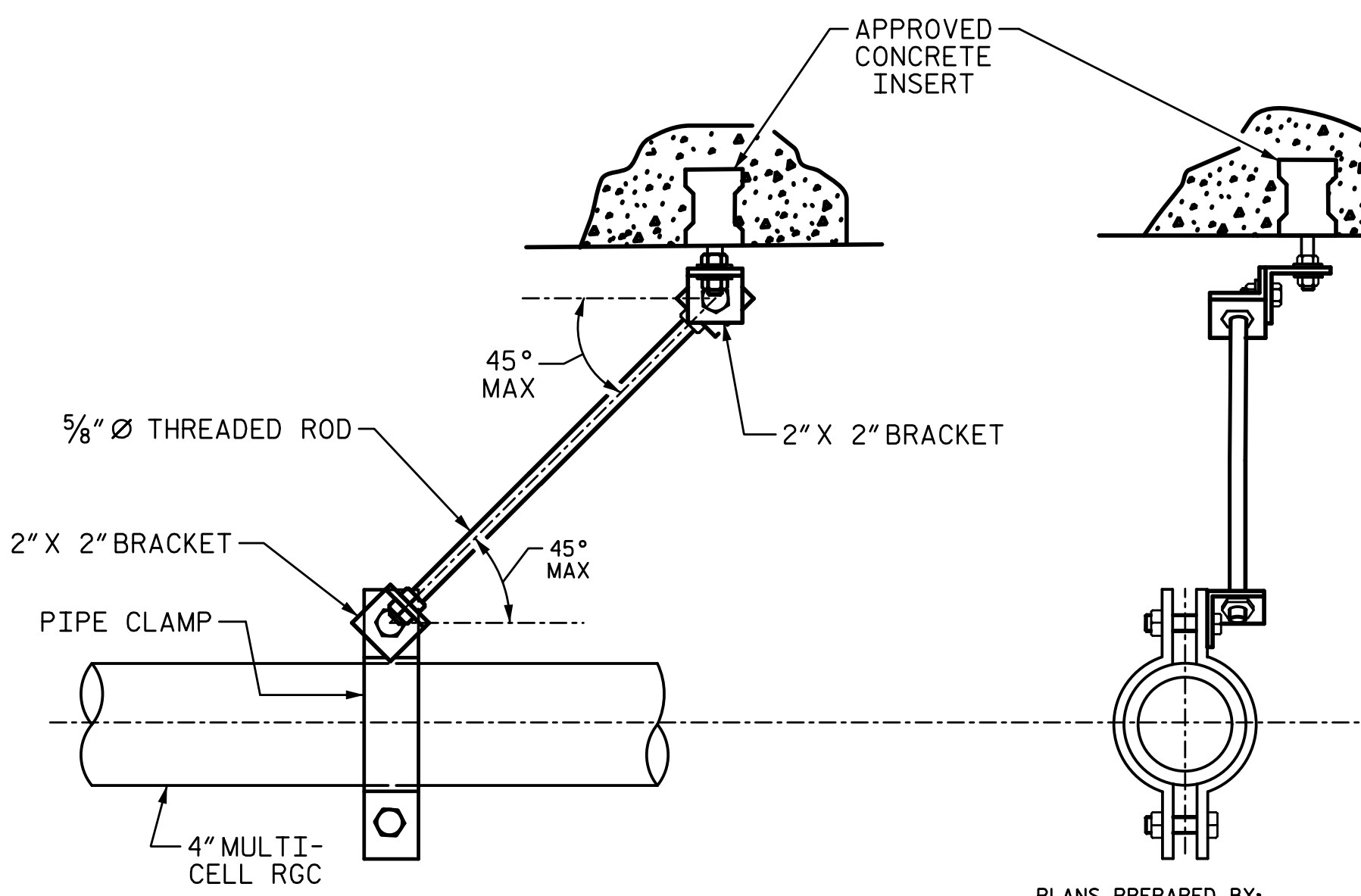


VIEW A-A



VIEW B-B

ELECTRIC CONDUIT DETAILS



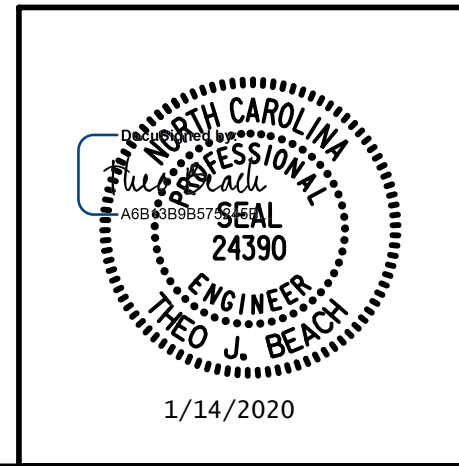
DETAIL "E"

STABILIZER

PROJECT NO. I-5711
ALAMANCE COUNTY
STATION: STA. 27+02.26 -L-

STATE OF NORTH CAROLINA DEPARTMENT OF TRANSPORTATION RALEIGH		ELECTRICAL CONDUIT SYSTEM FOR SIGNALS		LEFT WIDENING	
REVISIONS					
NO.	BY:	DATE:	NO.	BY:	DATE:
1			3		
2			4		
SHEET NO. S-66					TOTAL SHEETS 89

PLANS PREPARED BY:
SEA & A
IMPSON ENGINEERS & ASSOCIATES
5640 Dillard Drive
Suite 200
Cary, NC 27518
(919) 852-0468
(919) 852-0538 (Fax)
www.simpsonengr.com
LICENSURE NO. C-2521



1/14/2020 10:06:32 AM G:\Projects\2017\I-5711\Structures\Drawings\Final\401-I5711-SMJ_UT_000177.dgn

DRAWN BY: S.D. COOPER DATE: 1-20
CHECKED BY: T. BEACH DATE: 1-20
DESIGN ENGINEER OF RECORD: T. BEACH DATE: 1-20

**DOCUMENT NOT CONSIDERED FINAL
UNLESS ALL SIGNATURES COMPLETED**