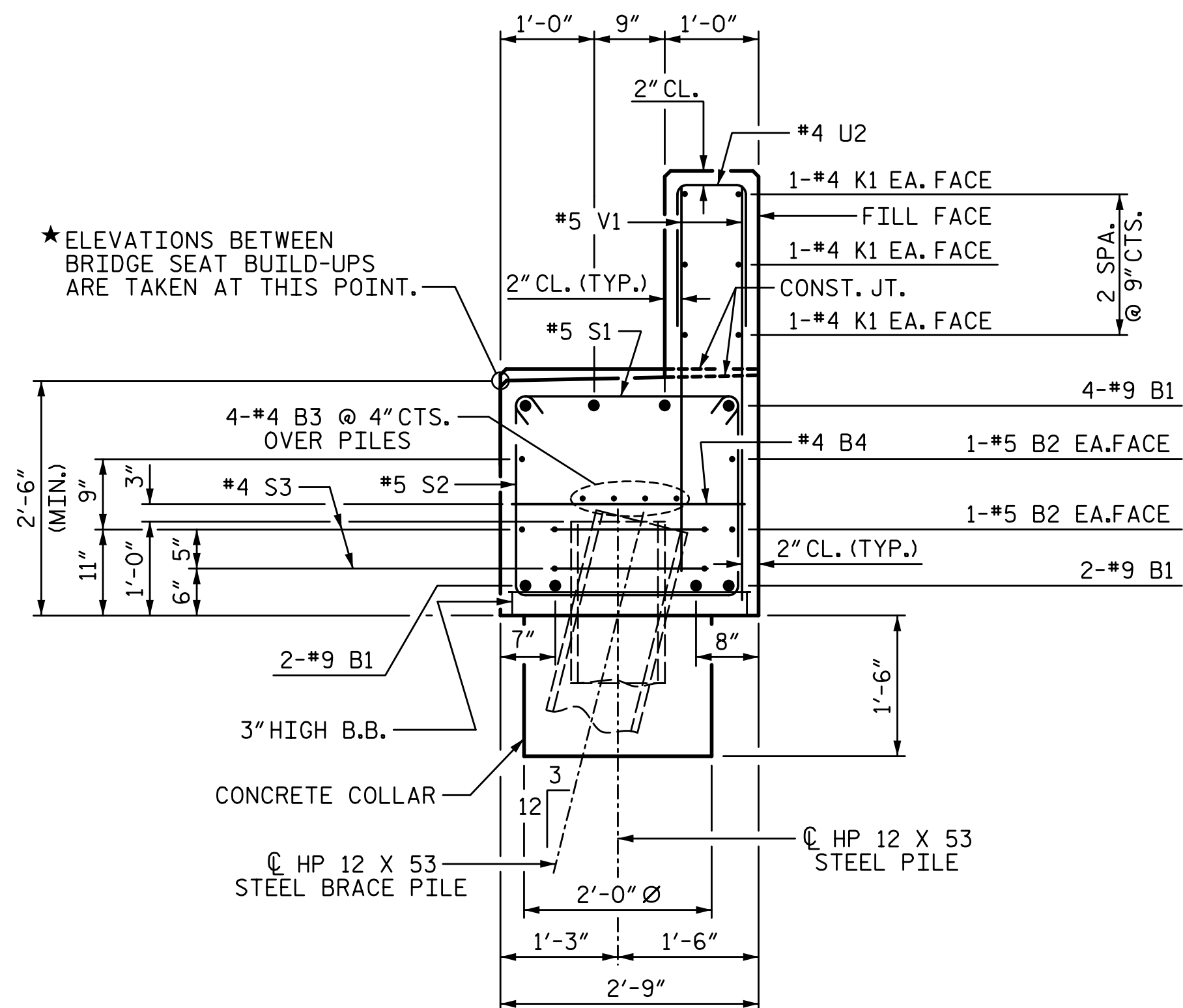
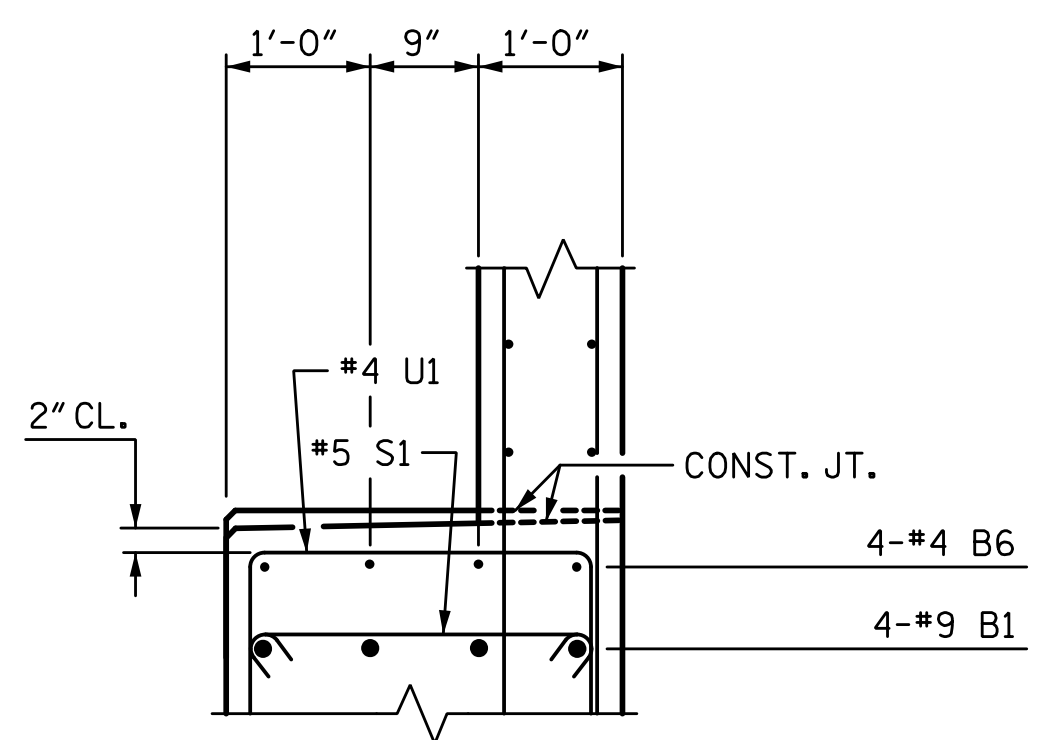


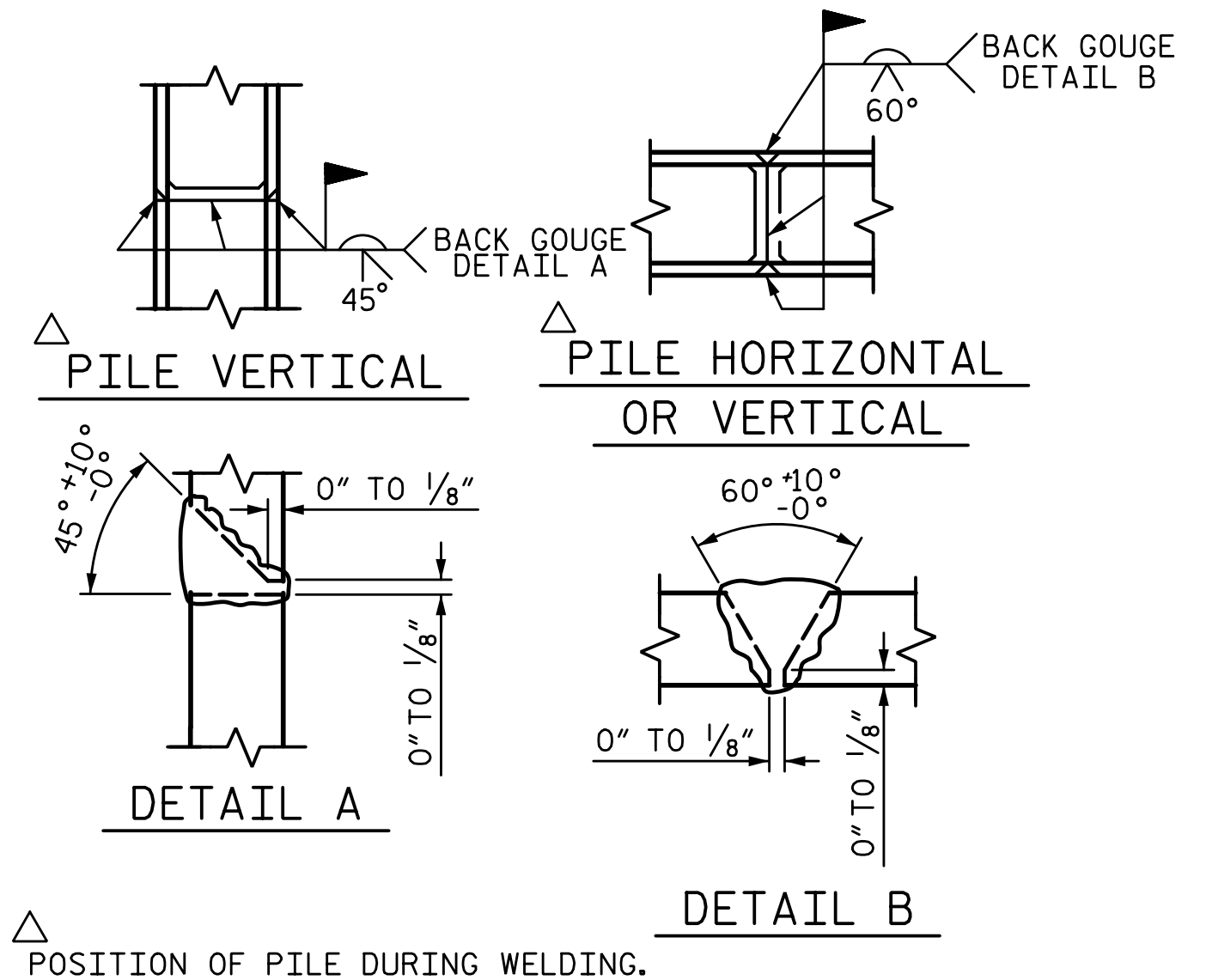
1/14/2020 10:06:31 AM G:\Projects\2017\I-5711\Structures\Drawings\Final\401-I5711-SMJ_EB2_RT_000177.dgn



SECTION A-A

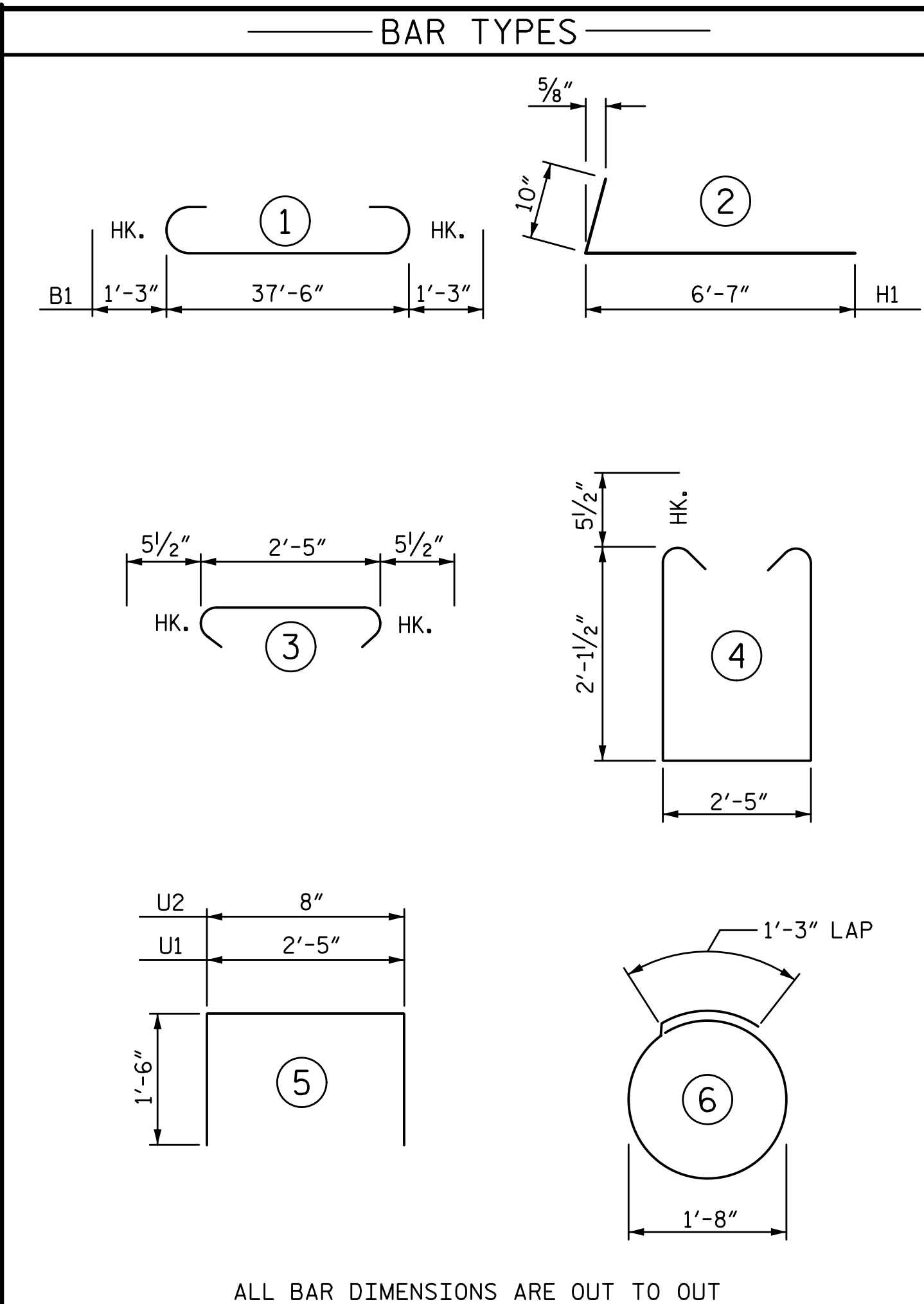


SECTION B-B



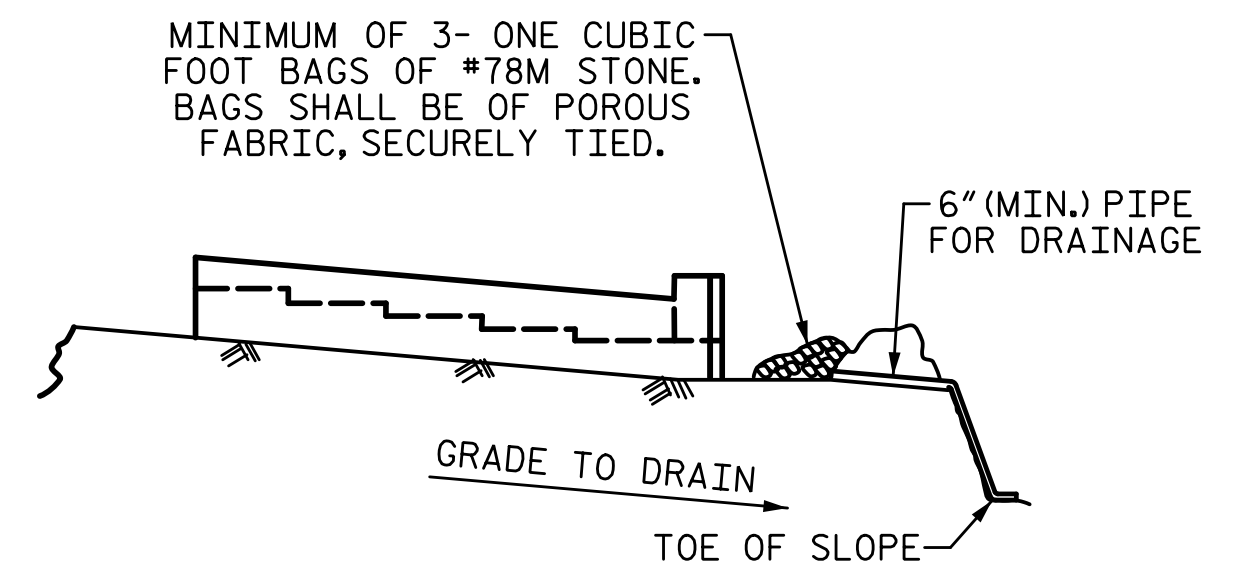
PILE SPLICE DETAILS

POSITION OF PILE DURING WELDING.



ALL BAR DIMENSIONS ARE OUT TO OUT

| BILL OF MATERIAL | | | | | |
|------------------------------------|-----|------|------|--------|--------|
| END BENT 2 | | | | | |
| BAR | NO. | SIZE | TYPE | LENGTH | WEIGHT |
| B1 | 8 | #9 | 1 | 40'-0" | 1088 |
| B2 | 4 | #5 | STR | 37'-7" | 157 |
| B3 | 8 | #4 | STR | 20'-0" | 107 |
| B4 | 10 | #4 | STR | 2'-5" | 16 |
| B5 | 8 | #4 | STR | 2'-2" | 12 |
| B6 | 4 | #4 | STR | 14'-6" | 39 |
| H1 | 18 | #4 | 2 | 7'-5" | 89 |
| K1 | 12 | #4 | STR | 20'-0" | 160 |
| K2 | 6 | #4 | STR | 3'-10" | 15 |
| S1 | 40 | #5 | 3 | 3'-4" | 139 |
| S2 | 40 | #5 | 4 | 7'-7" | 316 |
| S3 | 10 | #4 | 6 | 6'-6" | 43 |
| U1 | 16 | #4 | 5 | 5'-5" | 58 |
| U2 | 34 | #4 | 5 | 3'-8" | 83 |
| V1 | 68 | #5 | STR | 4'-2" | 296 |
| V2 | 26 | #4 | STR | 6'-2" | 107 |
| TOTAL REINFORCING STEEL | | | | 2725 | LB |
| CLASS A CONCRETE | | | | | |
| POUR 1 (CAP, COLLARS & LOWER WING) | | | | 12.2 | CY |
| POUR 2 (BACKWALL & UPPER WING) | | | | 4.0 | CY |
| TOTAL CLASS A CONCRETE | | | | 16.2 | CY |
| HP 12 X 53 STEEL PILES | | | | | |
| NO. 4 | | | | 80 | LF |
| STEEL PILE POINTS | | | | 4 | EA. |
| PILE DRIVING EQUIPMENT | | | | | |
| SETUP FOR HP 12 X 53 STEEL PILES | | | | NO. 4 | |



BAGGED STONE AND PIPE SHALL BE PLACED IMMEDIATELY AFTER COMPLETION OF END BENT EXCAVATION. PIPE MAY BE EITHER CONCRETE, CORRUGATED STEEL, CORRUGATED ALUMINUM ALLOY, OR CORRUGATED PLASTIC. PERFORATED PIPE WILL NOT BE ALLOWED.

BAGGED STONE SHALL REMAIN IN PLACE UNTIL THE ENGINEER DIRECTS THAT IT BE REMOVED. THE CONTRACTOR SHALL REMOVE AND DISPOSE OF SILT ACCUMULATIONS AT BAGGED STONE WHEN SO DIRECTED BY THE ENGINEER. BAGS SHALL BE REMOVED AND REPLACED WHENEVER THE ENGINEER DETERMINES THAT THEY HAVE DETERIORATED AND LOST THEIR EFFECTIVENESS.

NO SEPARATE PAYMENT WILL BE MADE FOR THIS WORK AND THE ENTIRE COST OF THIS WORK SHALL BE INCLUDED IN THE UNIT CONTRACT PRICE BID FOR THE SEVERAL PAY ITEMS.

TEMPORARY DRAINAGE AT END BENT

PROJECT NO. I-5711
ALAMANCE COUNTY
 STATION: STA. 27+02.26 -L-

SHEET 3 OF 3

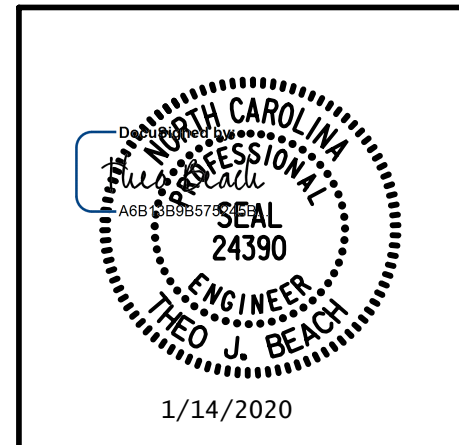
STATE OF NORTH CAROLINA
 DEPARTMENT OF TRANSPORTATION
 RALEIGH
 SUBSTRUCTURE

END BENT 2

RIGHT WIDENING

| REVISIONS | | | | | | SHEET NO. |
|-----------|-----|-------|-----|-----|-------|--------------|
| NO. | BY: | DATE: | NO. | BY: | DATE: | S-65 |
| 1 | | | 3 | | | TOTAL SHEETS |
| 2 | | | 4 | | | 89 |

PLANS PREPARED BY:
SE & A
 SIMPSON ENGINEERS & ASSOCIATES
 5640 Dillard Drive
 Suite 200
 Cary, NC 27518
 (919) 852-0468
 (919) 852-0598 (Fax)
 www.simpsonengr.com
 LICENSURE NO. C-2521



DRAWN BY: S.D. COOPER DATE: 1-20
 CHECKED BY: T. BEACH DATE: 1-20
 DESIGN ENGINEER OF RECORD: T. BEACH DATE: 1-20

**DOCUMENT NOT CONSIDERED FINAL
 UNLESS ALL SIGNATURES COMPLETED**