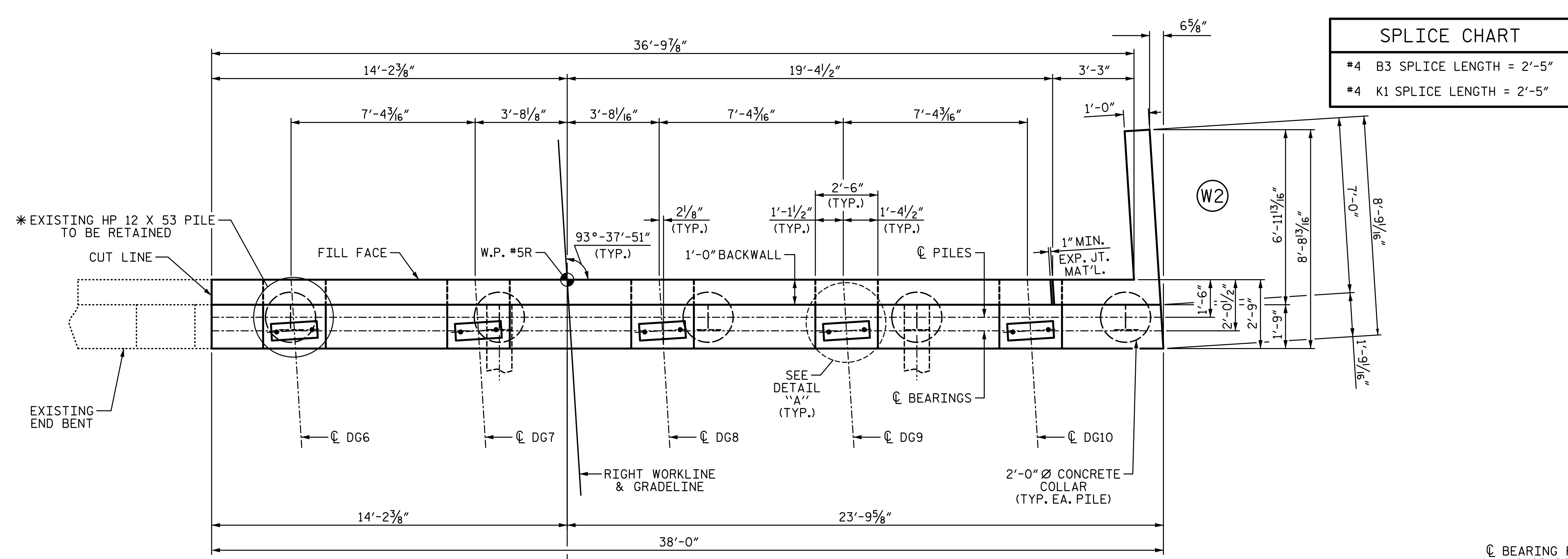
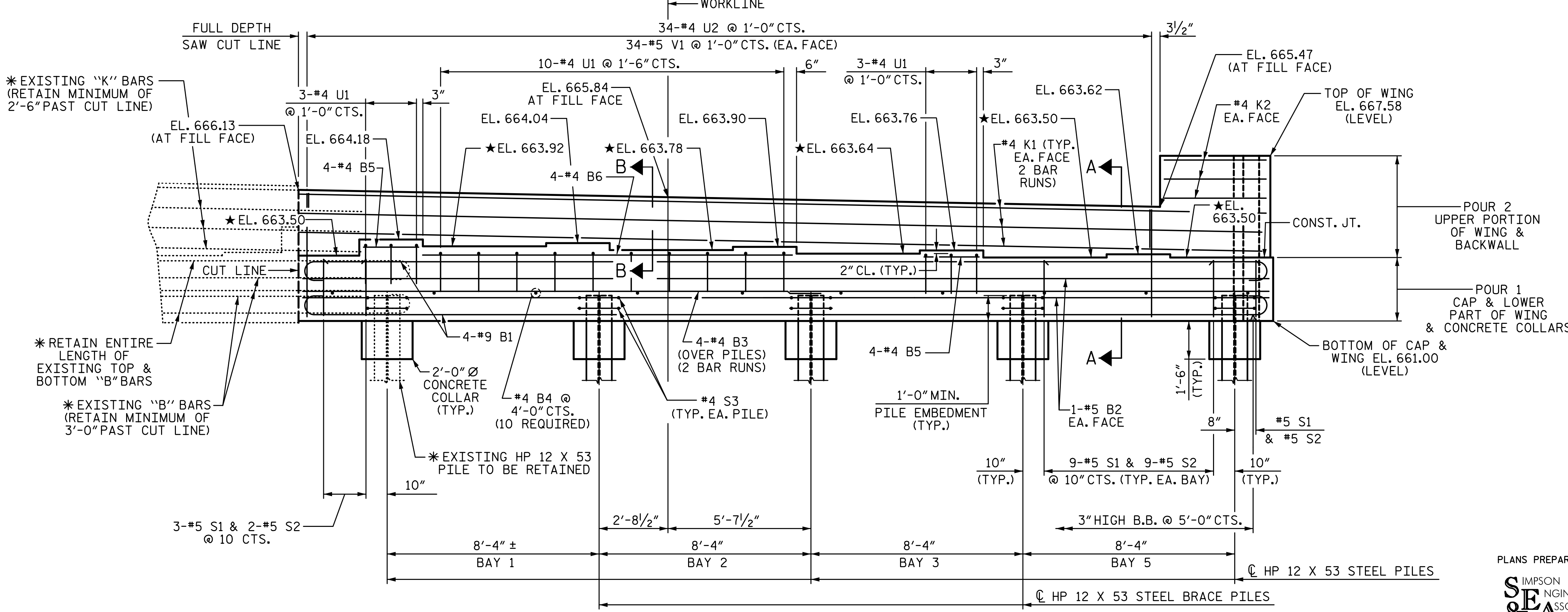


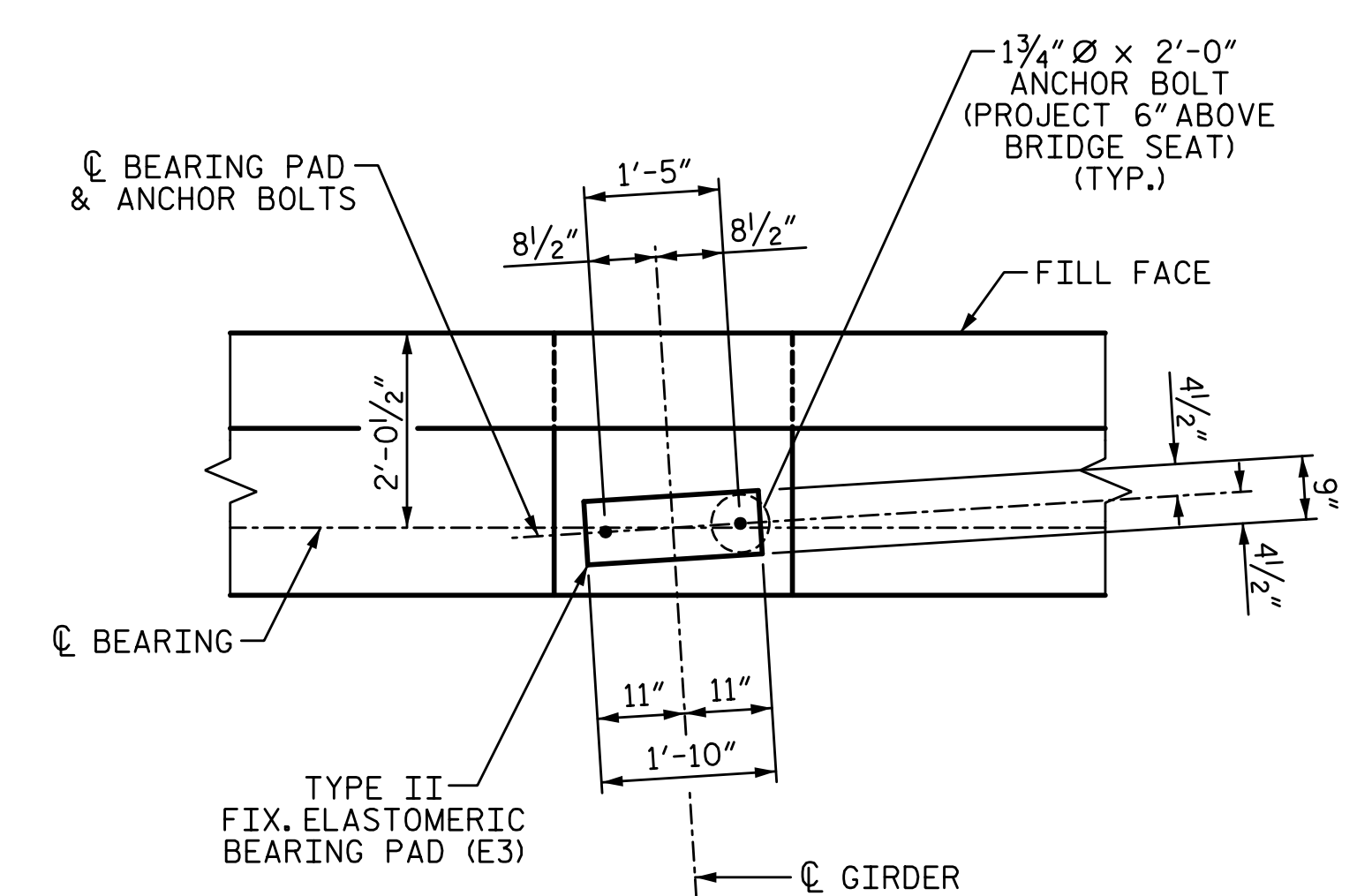
1/14/2020 10:06:31 AM G:\Projects\2017\I-5711\Structures\Drawings\Final\401-I5711-SMJ_EB2_RT_000177.dgn



PLAN



ELEVATION



DETAIL "A"
TYP. EA. GIRDER

NOTES:

- STIRRUPS AND "U" BARS IN CAP MAY BE SHIFTED AS NECESSARY TO CLEAR ANCHOR BOLTS.
- BACKWALL SHALL BE PLACED BEFORE APPLYING THE EPOXY PROTECTIVE COATING.
- THE TOP SURFACE AREAS OF THE END BENT CAPS SHALL BE CURED IN ACCORDANCE WITH THE STANDARD SPECIFICATIONS EXCEPT THE MEMBRANE CURING COMPOUND METHOD SHALL NOT BE USED.
- THE TOP SURFACE OF THE CAP EXCEPT THE BRIDGE SEAT BUILDUPS SHALL BE SLOPED TRANSVERSELY FROM THE FILL FACE TO THE BACK FACE AT THE RATE OF 2%.
- SEE GENERAL DRAWING "FOUNDATION LAYOUT" FOR ADDITIONAL NOTES FOR DRIVING PILES.
- * THE CONTRACTOR'S ATTENTION IS CALLED TO THE FACT THAT THE EXISTING EXTERIOR PILE AND THE EXISTING "B" AND "K" BARS REINFORCING STEEL SHALL BE RETAINED PAST THE PROPOSED CUT LINE AND WILL BECOME PART OF THE WIDENED END BENT. THE EXISTING REINFORCING STEEL MAY BE BENT AS REQUIRED FOR FITTING AND TYING TO THE NEW REINFORCING STEEL.
- * FOR LOCATIONS BETWEEN BRIDGE SEATS BUILD-UPS, SEE SECTION A-A ON SHEET 3 OF 3.

PROJECT NO. I-5711
ALAMANCE COUNTY
 STATION: STA. 27+02.26 -L-

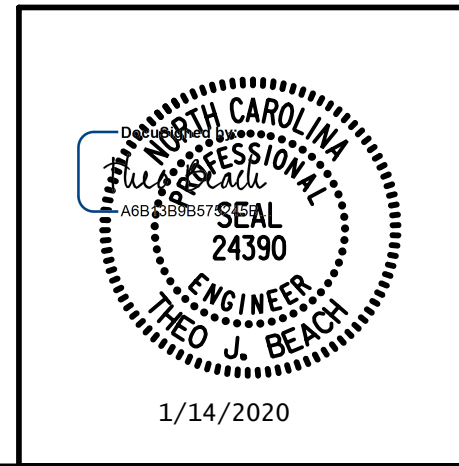
SHEET 1 OF 3

STATE OF NORTH CAROLINA
 DEPARTMENT OF TRANSPORTATION
 RALEIGH
 SUBSTRUCTURE
END BENT 2
 RIGHT WIDENING

REVISIONS						SHEET NO.
NO.	BY:	DATE:	NO.	BY:	DATE:	S-63
1			3			TOTAL SHEETS
2			4			89

DRAWN BY: S.D. COOPER DATE: 1-20
 CHECKED BY: T. BEACH DATE: 1-20
 DESIGN ENGINEER OF RECORD: T. BEACH DATE: 1-20

PLANS PREPARED BY:
SEA & A
 IMPSON ENGINEERS ASSOCIATES
 5640 Dillard Drive
 Suite 200
 Cary, NC 27518
 (919) 852-0468
 (919) 852-0538 (Fax)
 www.slmpsonengr.com
 LICENSURE NO. C-2521



**DOCUMENT NOT CONSIDERED FINAL
 UNLESS ALL SIGNATURES COMPLETED**