

SPLICE CHART	
#4 B3 SPLICE LENGTH = 2'-5"	
#4 K1 SPLICE LENGTH = 2'-5"	

**NOTES:**

STIRRUPS AND "U" BARS IN CAP MAY BE SHIFTED AS NECESSARY TO CLEAR ANCHOR BOLTS.

BACKWALL SHALL BE PLACED BEFORE APPLYING THE EPOXY PROTECTIVE COATING.

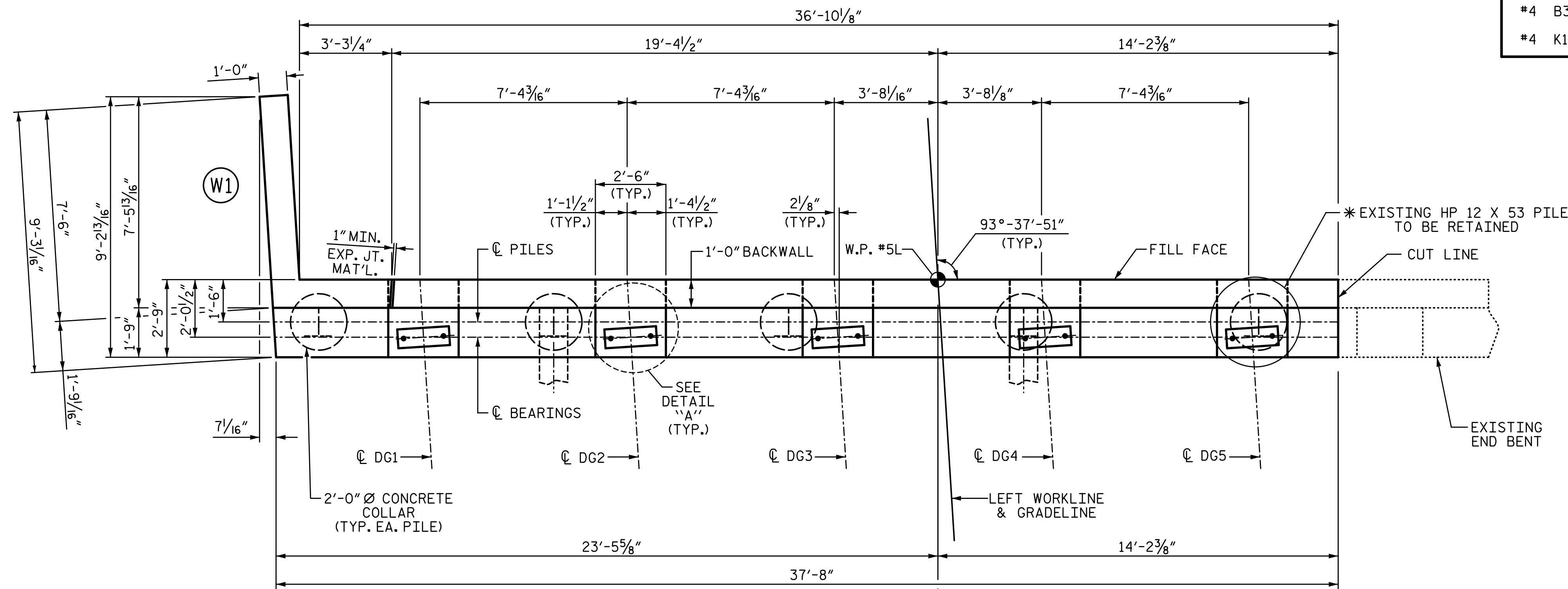
THE TOP SURFACE AREAS OF THE END BENT CAPS SHALL BE CURED IN ACCORDANCE WITH THE STANDARD SPECIFICATIONS EXCEPT THE MEMBRANE CURING COMPOUND METHOD SHALL NOT BE USED.

THE TOP SURFACE OF THE CAP EXCEPT THE BRIDGE SEAT BUILDUPS SHALL BE SLOPED TRANSVERSELY FROM THE FILL FACE TO THE BACK FACE AT THE RATE OF 2%.

SEE GENERAL DRAWING "FOUNDATION LAYOUT" FOR ADDITIONAL NOTES FOR DRIVING PILES.

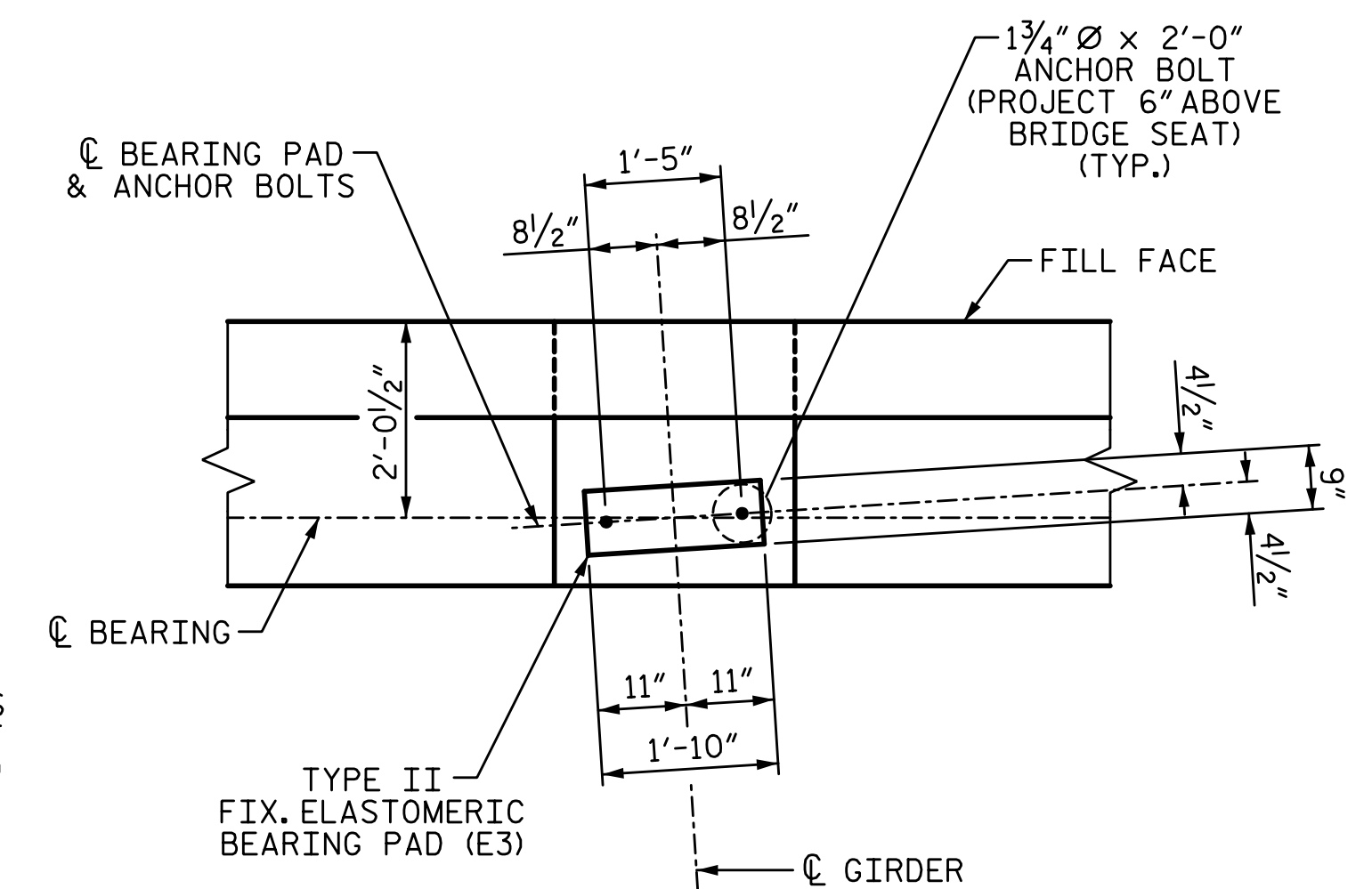
\* THE CONTRACTOR'S ATTENTION IS CALLED TO THE FACT THAT THE EXISTING EXTERIOR PILE AND THE EXISTING "B" AND "K" BARS REINFORCING STEEL SHALL BE RETAINED PAST THE PROPOSED CUT LINE AND WILL BECOME PART OF THE WIDENED END BENT. THE EXISTING REINFORCING STEEL MAY BE BENT AS REQUIRED FOR FITTING AND TYING TO THE NEW REINFORCING STEEL.

\* FOR LOCATIONS BETWEEN BRIDGE SEATS BUILD-UPS, SEE SECTION A-A ON SHEET 3 OF 3.



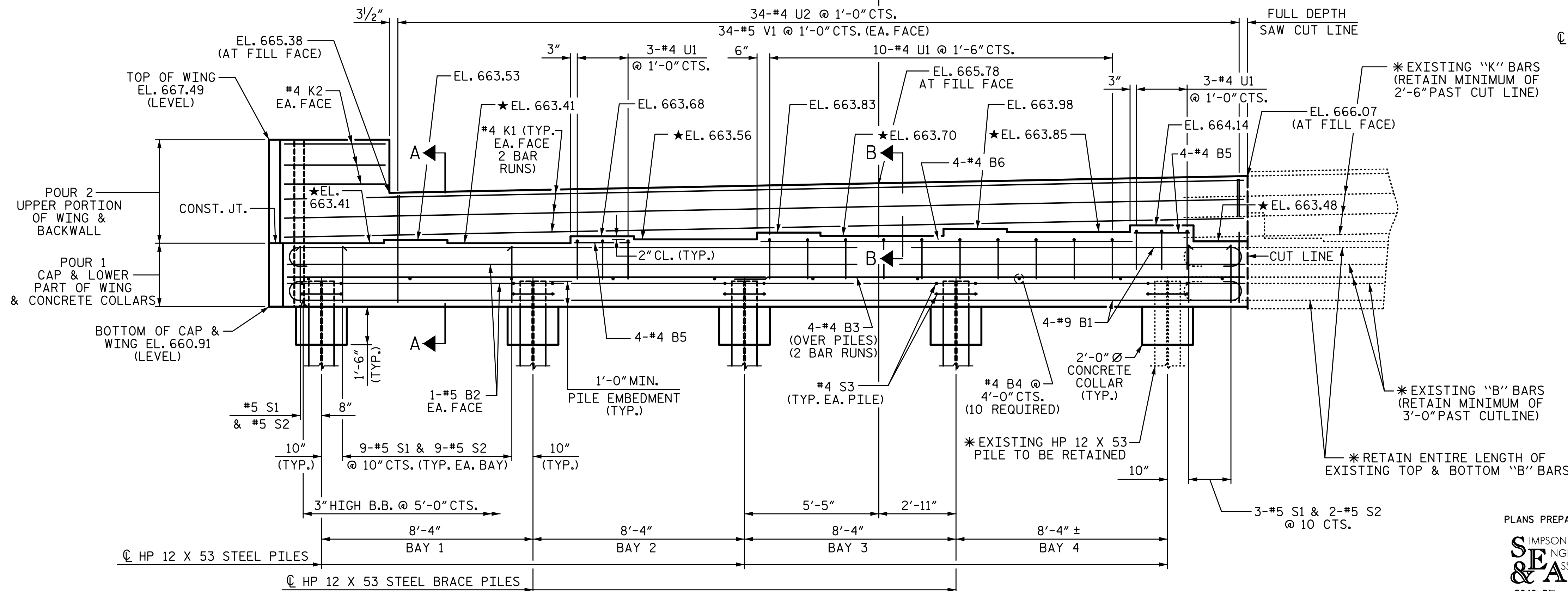
**PLAN**

WORKLINE



**DETAIL "A"**

TYP. EA. GIRDER



**ELEVATION**

PROJECT NO. I-5711  
ALAMANCE COUNTY  
 STATION: STA. 27+02.26 -L-

SHEET 1 OF 3

STATE OF NORTH CAROLINA  
 DEPARTMENT OF TRANSPORTATION  
 RALEIGH  
 SUBSTRUCTURE

END BENT 2

LEFT WIDENING

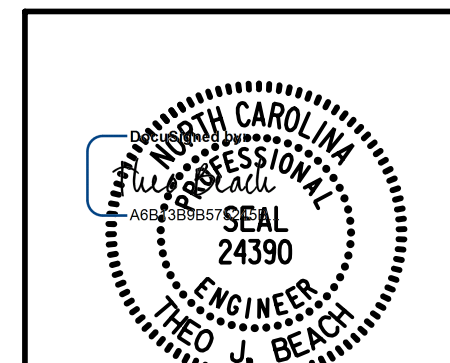
REVISIONS

NO.	BY:	DATE:	NO.	BY:	DATE:
1			3		
2			4		

SHEET NO.  
S-60  
TOTAL SHEETS  
89

PLANS PREPARED BY:

**SE & A**  
 SIMPSON ENGINEERS & ASSOCIATES  
 5640 Dillard Drive  
 Suite 200  
 Cary, NC 27518  
 (919) 852-0468  
 (919) 852-0598 (Fax)  
 www.simpsonengr.com  
 LICENSURE NO. C-2521



1/14/2020

1/14/2020 10:06:30 AM G:\Projects\2017\I-5711\Structures\Drawings\Final\401-I5711-SMJ\_EB2\_LT\_000177.dgn

DRAWN BY: S.D. COOPER DATE: 1-20  
 CHECKED BY: T. BEACH DATE: 1-20  
 DESIGN ENGINEER OF RECORD: T. BEACH DATE: 1-20

**DOCUMENT NOT CONSIDERED FINAL  
 UNLESS ALL SIGNATURES COMPLETED**